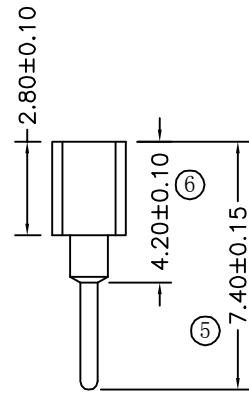
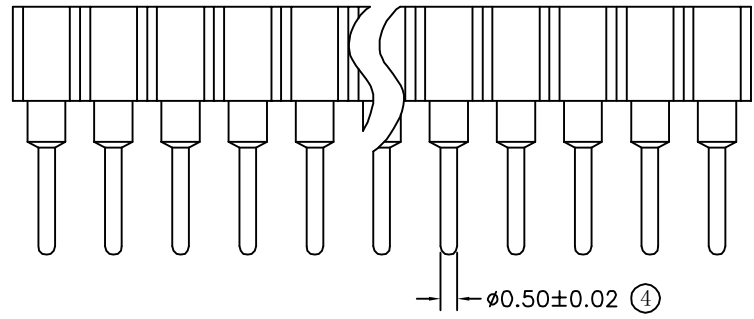
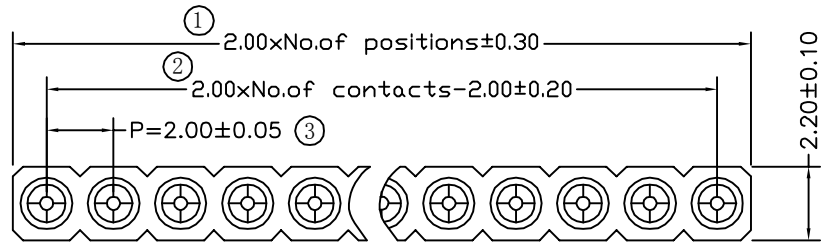


环保物料

TEL:0769-82001899



Technical Data

Material:

Pin(outer sleeve):Brass,machined CuZn38Pb2

Plating(outer sleeve):

Tin Plated:2 μ m/80 μ "Ni, 5 μ m/200 μ "Sn

Gold Plated:2 μ m"/80 μ "Ni, 0.8 μ " gold

Plating(Contact):2 μ m/80 μ "Ni, gold or Tin plated

Insulator:PPS UL94V-0

ClIp(Contact 4 Flnger):Beryllium copper,heat teated

Mating pin ϕ :0.40mm/0.66mm

Electrical:

Current rating:3Amps/contact max.

Contact resistance: $\leq 4m\Omega$ /contact

Insulation resistance: $\geq 1000M\Omega$ at V=100V

Dlelectric Withstanding Voltage:1000V AV Min

Operaling voltage:60VAC/DC

Mechanical:

-Insertion:0.7N typ

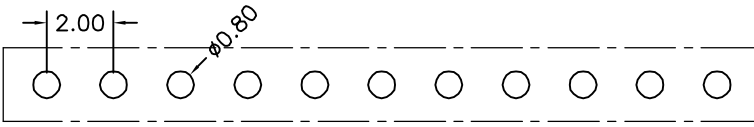
-Withdrawal:0.4N typ

Mechanical lige:min 500 cycle

Operaling temperature:-40 $^{\circ}$ C to+105 $^{\circ}$ C

Soldering temperature:+255 $^{\circ}$ C

Critical Dimensions:(*)



P. C. B LAYOUT

| | | | | | | | | | | | | | |
|-----|--------------|--|--|----------------------------|------------|----------------|-----------------|---|-------------------|--------------|-------------------------------|------------|-----|
| | | | | TOLERANCE UNLESS OTHERWISE | | DRAWN | CK tan | XFCN 兴飞连接器有限公司 XFCN CONNECTORS CO.,LTD. | | SHEET | 1/1 | | |
| | | | | X. | ± 0.30 | X $^{\circ}$ | $\pm 5^{\circ}$ | | | CHKD | DATE | 2020.04.12 | |
| | | | | .X | ± 0.20 | .X $^{\circ}$ | $\pm 2^{\circ}$ | | | APPD | UNITS | mm | |
| | | | | .XX | ± 0.08 | .XX $^{\circ}$ | $\pm 1^{\circ}$ | | | VIEW | SCALE | 1:1 | |
| AO | MODIFICATION | | | DRAW | DATE | .XXX | ± 0.03 | .XXX $^{\circ}$ | $\pm 0.5^{\circ}$ | PRODUCT NAME | 2.00mm Machined Female Header | DWG NO. | 009 |
| VER | | | | | | | | | | PART. NO. | MF200V-11-xx-0740 | | |