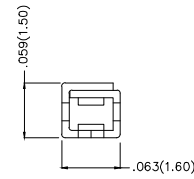
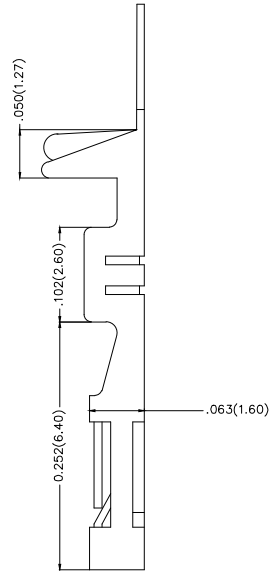
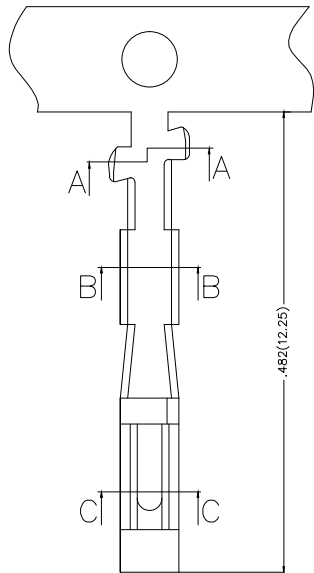


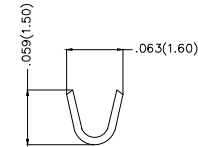
REV	LOCATIONS	DESCRIPTION	DATE	REVISER	APPD

Notes:

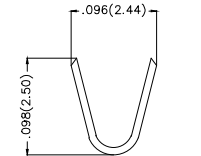
1. Material: Phosphor Bronze C5191
2. Plating: Tin Plated or Half Gold/Tin
3. Wire Range: 28AWG~22AWG
4. Insulation Nom.Dia:  $\phi$ .067 ( $\phi$ 1.7mm Max)
5. Applicable Housing: FHG25403, FHG25404 Series
6. Minimum Order Quantity: 11,000 PCS



Section C-C



Section B-B



Section A-A

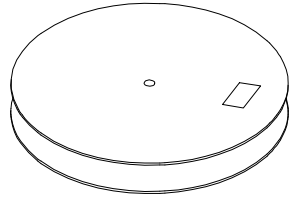
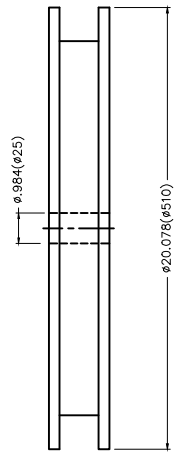
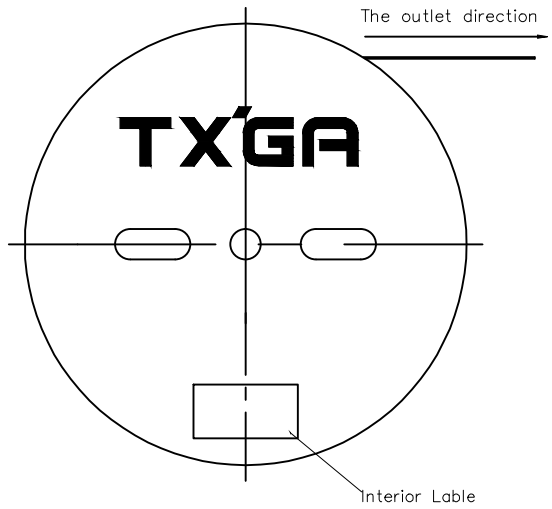
Ordering Information

FT 254 03 — F X H  
1 2 3 4 5 6

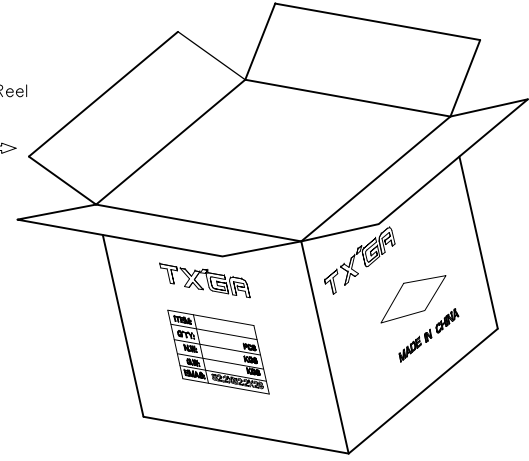
1 Category	2 Series Number	3 Distinction No.	4 Type	5 Plating	6 Packaging
FT-Terminal	254-Pitch2.54mm	03	F-Female	2-Tin Plated All 3-Half Gold/Tin	H-Paper Axis

 THIRD ANGLE PROJECTION	GENERAL TOLERANCES (UNLESS SPECIFIED)		APPROVE BY FRANK	DATE 25/JUN/13	PART NO. FT25403-FXH	ITEM NO. FT25403	 Leader Of Industry	
	DESIGN UNITS Inch (metric)	X.X±.012(0.30) X.X±.008(0.20)	X'±5" .X'±2"	CHECKED BY JACOB	DATE 25/JUN/13	TITLE Wire to Board Pitch 2.54mm(Terminal)		REV 0
SCALE 5:1	SIZE A4	X.XX±.006(0.15) X.XXX±.004(0.10)	.XX'±1" .XXX'±0.5'	DRAWN BY CHERRY	DATE 25/JUN/13	THIS DRAWING CONTAINS INFORMATION THAT IS PROPRIETARY TO TXGA INDUSTRIAL ELECTRONICS(S.Z)CO.,LTD AND SHOULD NOT BE USED WITHOUT WRITTEN PERMISSION		

REV	LOCATIONS	DESCRIPTION	DATE	REVISER	APPD



11,000Pcs/Reel



 THIRD ANGLE PROJECTION	GENERAL TOLERANCES (UNLESS SPECIFIED)		APPROVE BY	DATE	PART NO.	ITEM NO.	 Leader Of Industry
	X.±.012(0.30)	X.±5'	FRANK	25/JUN/13	FT25403-FXH	FT25403	
	X.X±.008(0.20)	.X'±2'	CHECKED BY	DATE	TITLE		Wire to Board Pitch 2.54mm(Terminal)
	X.XX±.006(0.15)	.XX'±1'	JACOB	25/JUN/13	THIS DRAWING CONTAINS INFORMATION THAT IS PROPRIETARY TO TXGA INDUSTRIAL ELECTRONICS(S.Z)CO.,LTD AND SHOULD NOT BE USED WITHOUT WRITTEN PERMISSION		
SCALE	SIZE	X.XXX±.004(0.10)	.XXX'±0.5'	DRAWN BY	DATE	REV 0	SHEET NO. 2/2
5:1	A4			CHERRY	25/JUN/13		