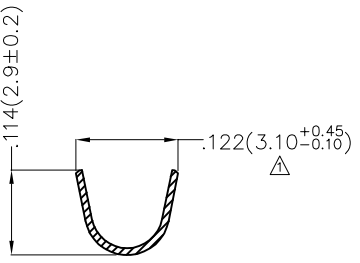
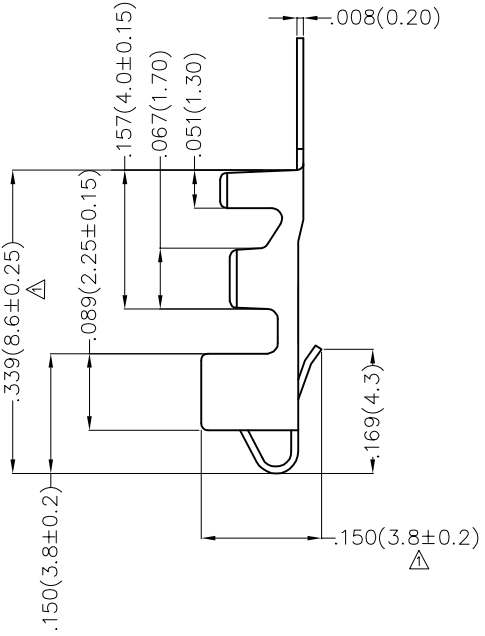
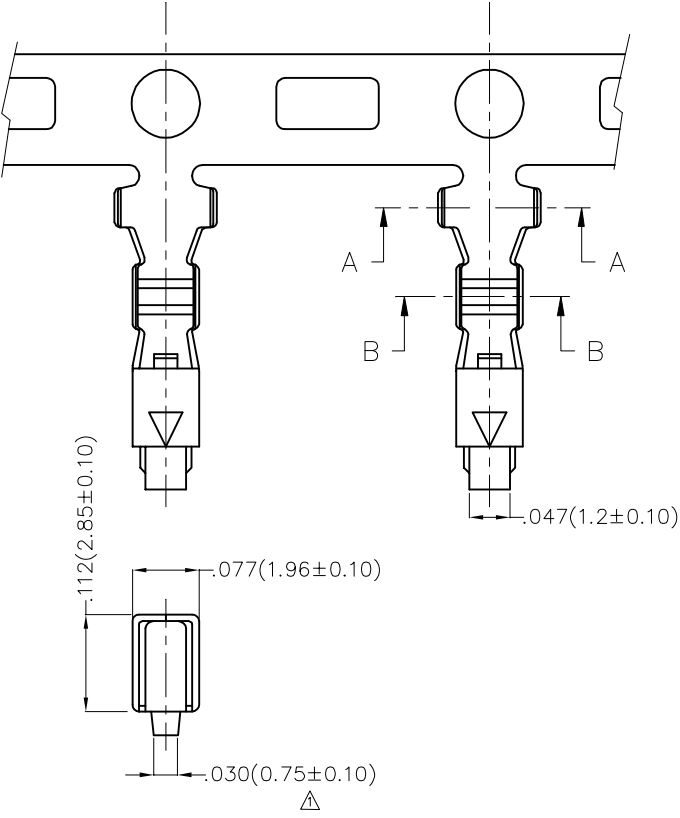
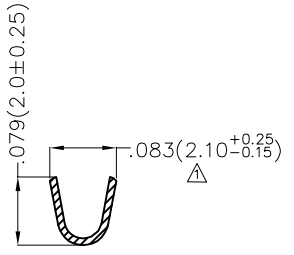


REV	LOCATIONS	DESCRIPTION	DATE	REVISER	APPD
1	△	SIZE CHANGE	20180704	CHERRY	KATE

Notes:
 Material: Phosphor Bronze C5191
 Plating: Tin-Plated
 Wire Range: 28AWG~22AWG
 Applicable Housing: FHG25010Series
 Minimum Order Quantity : 6,000 PCS



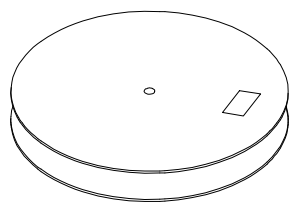
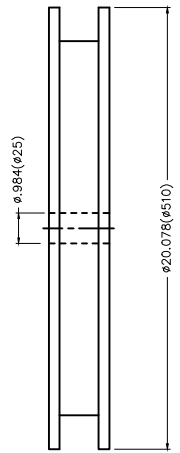
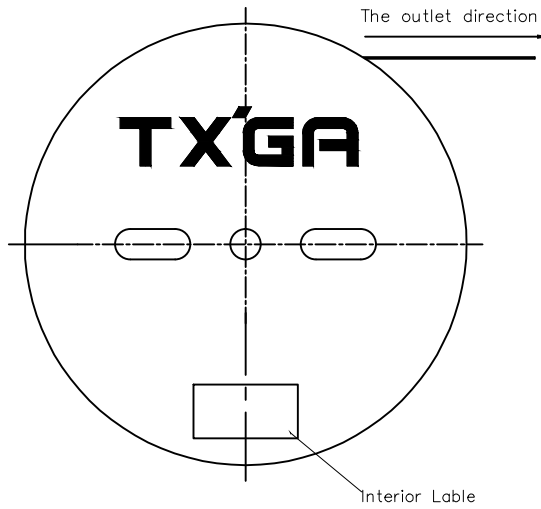
Section A-A



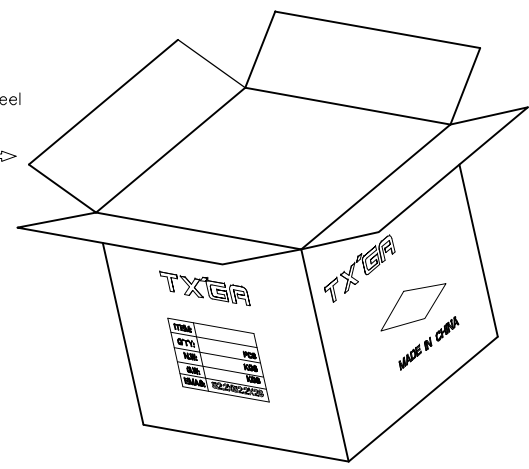
Section B-B

 THIRD ANGLE PROJECTION	GENERAL TOLERANCES (UNLESS SPECIFIED)		APPROVE BY	DATE	PART NO.	ITEM NO.	 Leader Of Industry	
	X.±.012(0.30)	X.±5°	FRANK	25/JUN/13	FT25009-F2H	FT25009		
	DESIGN UNITS Inch (metric)	X.X±.008(0.20)	X'±2'	CHECKED BY	DATE	TITLE		
	SCALE	X.XX±.006(0.15)	.XX'±1'	JACOB	25/JUN/13	Wire to Board Pitch 2.50mm(Terminal)		
SIZE	X.XXX±.004(0.10)	.XXX'±0.5"	DRAWN BY	DATE	THIS DRAWING CONTAINS INFORMATION THAT IS PROPRIETARY TO TXGA INDUSTRIAL ELECTRONICS(S.Z)CO.,LTD AND SHOULD NOT BE USED WITHOUT WRITTEN PERMISSION		REV 1	SHEET NO. 1/2
A4			CHERRY	25/JUN/13				

REV	LOCATIONS	DESCRIPTION	DATE	REVISER	APPD



6,000Pcs/Reel



 THIRD ANGLE PROJECTION	GENERAL TOLERANCES (UNLESS SPECIFIED)		APPROVE BY	DATE	PART NO.	ITEM NO.	 Leader Of Industry
	X. \pm .012(0.30)	X. \pm 5'	FRANK	25/JUN/13	FT25009-F2H	FT25009	
	X.X \pm .008(0.20)	.X \pm 2'	CHECKED BY	DATE	TITLE		REV 0
	X.XX \pm .006(0.15)	.XX \pm 1'	JACOB	25/JUN/13	Wire to Board Pitch 2.50mm(Terminal)		SHEET NO. 2/2
SCALE	SIZE	X.XXX \pm .004(0.10)	.XXX \pm 0.5'	DRAWN BY	DATE	THIS DRAWING CONTAINS INFORMATION THAT IS PROPRIETARY TO TXGA INDUSTRIAL ELECTRONICS(S.Z)CO.,LTD AND SHOULD NOT BE USED WITHOUT WRITTEN PERMISSION	
5:1	A4			CHERRY	25/JUN/13		