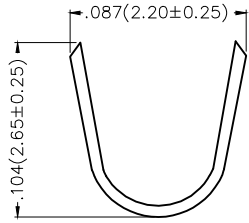
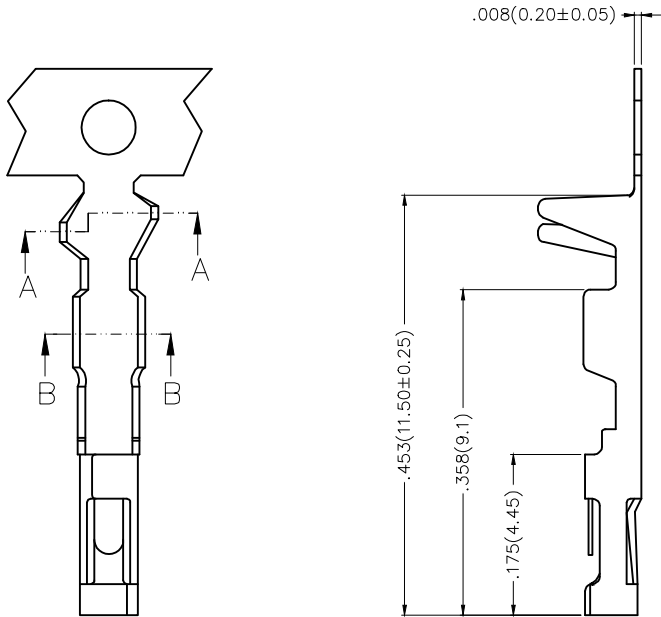


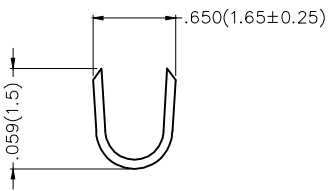
1 2 3 4 5 6 7 8

REV	LOCATIONS	DESCRIPTION	DATE	REVISER	APPD
1		Update version	17/AUG/18	KATE	FRANK

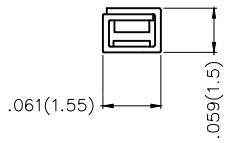
Electrical  
 Material: Phosphor Bronze  
 Plating: Tin-Plated  
 Wire Range: 28AWG~22AWG  
 Insulation Nom.Dia:  $\phi.067''$ ( $\phi 1.7\text{mm}$ ) Max  
 Applicable Housing: FHG25414 Series  
 Minimum Order Quantity : 10,000 PCS



Section A-A



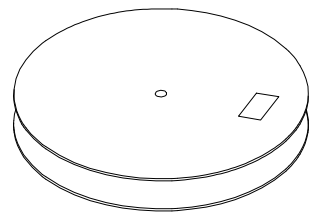
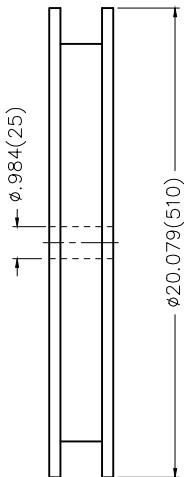
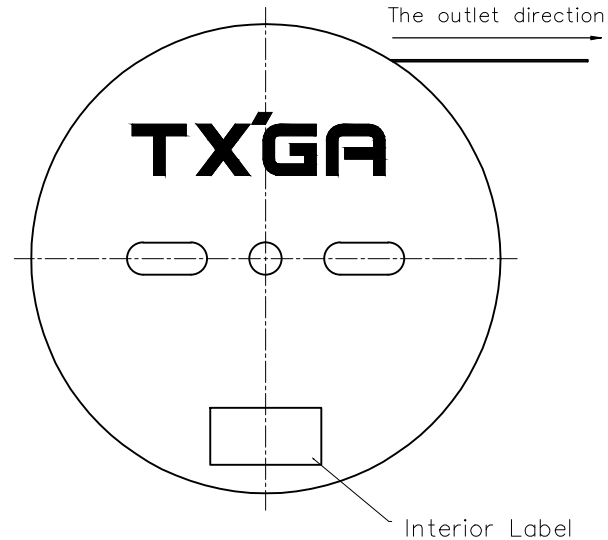
Section B-B



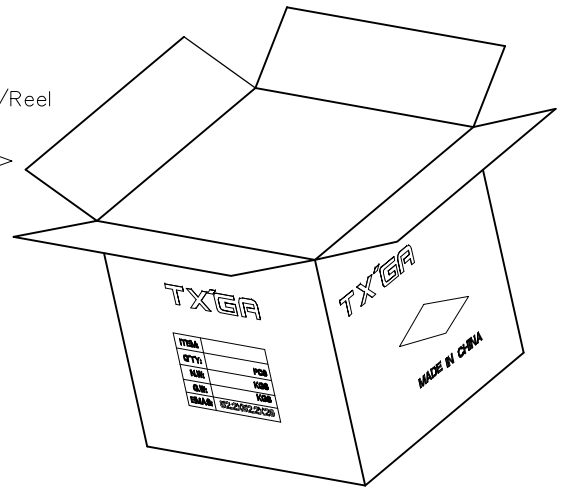
 THIRD ANGLE PROJECTION	GENERAL TOLERANCES (UNLESS SPECIFIED)		APPROVE BY FRANK	DATE 18/JUN/13	PART NO. FT25410-F2H	ITEM NO. FT25410	 Leader Of Industry
	X.±.012(0.30)	X.±5'	CHECKED BY CHERRY	DATE 18/JUN/13	TITLE Wire to Board Pitch 2.54mm(Terminal)		
DESIGN UNITS Inch (metric)	X.X±.008(0.20)	.X'±2'	DRAWN BY KEVIN	DATE 18/JUN/13	THIS DRAWING CONTAINS INFORMATION THAT IS PROPRIETARY TO TXGA INDUSTRIAL ELECTRONICS(S.Z)CO.,LTD AND SHOULD NOT BE USED WITHOUT WRITTEN PERMISSION		
SCALE 5:1	SIZE A4	X.XXX±.004(0.10)	.XXX'±0.5'				

1 2 3 4 5 6 7 8

REV	LOCATIONS	DESCRIPTION	DATE	REVISER	APPD



10,000 Pcs/Reel



<p>THIRD ANGLE PROJECTION</p>	GENERAL TOLERANCES (UNLESS SPECIFIED)		APPROVE BY FRANK	DATE 18/JUN/13	PART NO. FT25410-F2H	ITEM NO. FT25410	<p>Leader Of Industry</p>
	DESIGN UNITS Inch (metric)	X. $\pm$ .012(0.30)	X. $\pm$ 5'	CHECKED BY CHERRY	DATE 18/JUN/13	TITLE Wire to Board Pitch 2.54mm(Terminal)	
SCALE 5:1	SIZE A4	X.XX $\pm$ .006(0.15)	.XX $\pm$ 1'	DRAWN BY KEVIN	DATE 18/JUN/13	THIS DRAWING CONTAINS INFORMATION THAT IS PROPRIETARY TO TXGA INDUSTRIAL ELECTRONICS(S.Z)CO.,LTD AND SHOULD NOT BE USED WITHOUT WRITTEN PERMISSION	
		X.XXX $\pm$ .004(0.10)	.XXX $\pm$ 0.5'			REV 1	SHEET NO. 2/2