

REV	LOCATIONS	DESCRIPTION	DATE	REVISER	APPD

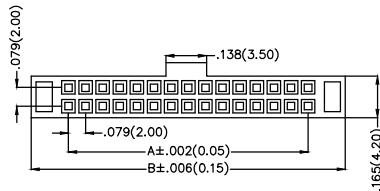
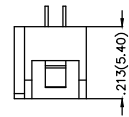
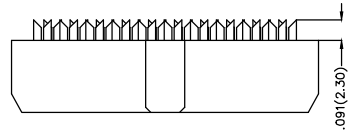
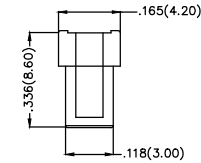
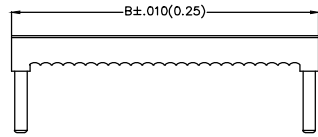
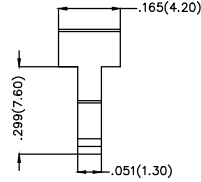
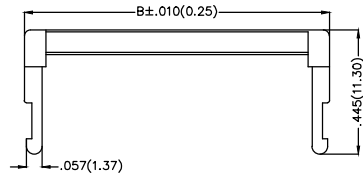
SPECIFICATIONS

Electrical

Current Rating: 2.0A AC(rms)/DC
Voltage Rating: 250V AC(rms)/DC
Contact Resistance: 20 mΩ Max
Insulation Resistance: 1000 MΩ MIN
Withstanding Voltage: 500V AC r.m.s
Temperature Range—Operating: -40°C~+105°C

Material and Plating

Housing: PBT (UL 94V-0)
Contact: Brass
Plating: Gold in contact area, nickel on tail



Ordering Information

FID 200 02 — XX 3 K6 K
1 2 3 4 5 6 7

Category	Series Number	Distinction No.	Circuits	Plating	Color—Resin	Packaging
1 FID-IDC	2 200—Pitch2.00mm	3 02	4 XX	5 3—Gold in contact area, nickel on tail	6 K6—Black	7 K—Tray

Circuits (n)	Part No.	Dimensions(in/mm)		Circuits (n)	Part No.	Dimensions(in/mm)	
		A	B			A	B
6	FID20002-063K6K	.157(4.00)	.441(11.20)	24	FID20002-243K6K	.866(22.00)	1.150(29.20)
8	FID20002-083K6K	.236(6.00)	.517(13.20)	26	FID20002-263K6K	.945(24.00)	1.228(31.20)
10	FID20002-103K6K	.315(8.00)	.598(15.20)	28	FID20002-283K6K	1.024(26.00)	1.306(33.20)
12	FID20002-123K6K	.394(10.00)	.677(17.20)	30	FID20002-303K6K	1.102(28.00)	1.386(35.20)
14	FID20002-143K6K	.472(12.00)	.756(19.20)	34	FID20002-343K6K	1.260(32.00)	1.543(39.20)
16	FID20002-163K6K	.551(14.00)	.835(21.20)	36	FID20002-363K6K	1.339(34.00)	1.622(41.20)
18	FID20002-183K6K	.630(16.00)	.913(23.20)	40	FID20002-403K6K	1.496(38.00)	1.780(45.20)
20	FID20002-203K6K	.709(18.00)	.992(25.20)	44	FID20002-443K6K	1.654(42.00)	1.937(49.20)
22	FID20002-223K6K	.787(20.00)	1.071(27.20)	50	FID20002-503K6K	1.890(48.00)	2.173(55.20)
60	FID20002-603K6K	1.890(58.00)	2.173(65.20)				

<p>THIRD ANGLE PROJECTION</p>	GENERAL TOLERANCES (UNLESS SPECIFIED)		APPROVE BY	DATE	PART NO.		ITEM NO.	<p>Leader Of Industry</p>		
			FRANK	9/SEPT/13	FID20002-XX3K6K		FID20002			
	DESIGN UNITS	X.±.012(0.30)	X.±5'	CHECKED BY	DATE	TITLE			REV 0	SHEET NO. 1/1
	Inch (metric)	X.X±.008(0.20)	.X'±2'	CHERRY	9/SEPT/13	Wire to Board(IDC Connector) Pitch 2.00mm				
SCALE	X.XX±.006(0.15)	.XX'±1'	DRAWN BY	DATE	THIS DRAWING CONTAINS INFORMATION THAT IS PROPRIETARY TO TXGA INDUSTRIAL ELECTRONICS(S.Z)CO.,LTD AND SHOULD NOT BE USED WITHOUT WRITTEN PERMISSION					
5:1	X.XXX±.004(0.10)	.XXX'±0.5'	JACOB	9/SEPT/13						