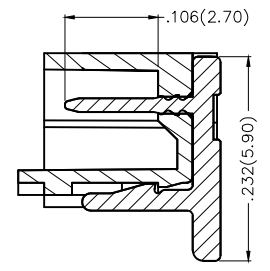
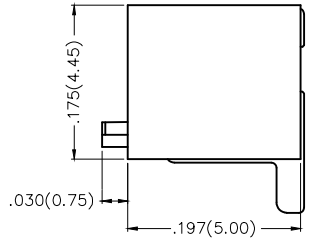
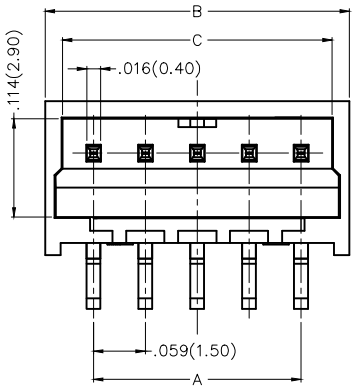
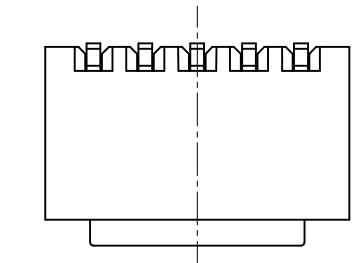
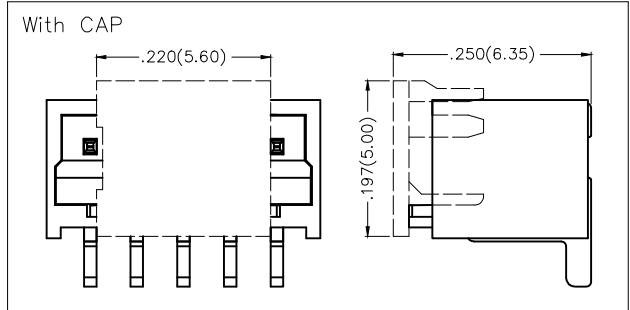


REV	LOCATIONS	DESCRIPTION	DATE	REVISER	APPD

SPECIFICATIONS

Electrical
 Current Rating: 3A AC(rms)/DC
 Voltage Rating: 350V AC(rms)/DC
 Contact Resistance: 20 mΩ Max
 Insulation Resistance: 1000 MΩ Min
 Withstanding Voltage: 500V AC r.m.s
 Temperature Range—Operating: -25°C~+85°C

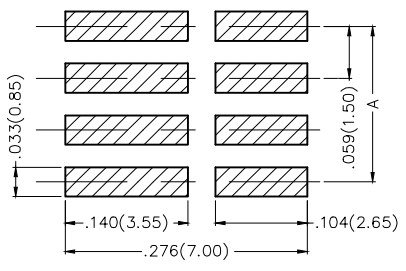
Material and Plating
 Housing: PA6T (UL 94V-0)
 Pin: Brass/ Tin Plated



Ordering Information

FWF 150 09 — S XX S 2 4 W5 M
 1 2 3 4 5 6 7 8 9 10

1	Category	2	Series Number	3	Distinction No.	4	Row Option	5	Circuits
	FWF—Wafer		150—Pitch1.50mm		09		S—Single Row		XX
6	Entry Angle	7	Plating	8	Material—Resin	9	Color—Resin	10	Packaging
	S—180° Vertical		2—Tin Plated		4—PA6T		W5—Natural		M—Reel



Recommended P.C.Board Layout
 General Tolerances: ±0.05mm

Circuits (n)	Part No.	Dimensions(in/mm)			Circuits (n)	Part No.	Dimensions(in/mm)		
		A	B	C			A	B	C
2	FWF15009-S02S24W5M	.059(1.50)	.169(4.30)	.132(3.35)	9	FWF15009-S09S24W5M	.472(12.00)	.583(14.80)	.545(13.85)
3	FWF15009-S03S24W5M	.118(3.00)	.228(5.80)	.191(4.85)	10	FWF15009-S10S24W5M	.531(13.50)	.642(16.30)	.604(15.35)
4	FWF15009-S04S24W5M	.177(4.50)	.287(7.30)	.250(6.35)	11	FWF15009-S11S24W5M	.591(15.00)	.701(17.80)	.663(16.85)
5	FWF15009-S05S24W5M	.236(6.00)	.346(8.80)	.309(7.85)	12	FWF15009-S12S24W5M	.650(16.50)	.760(19.30)	.722(18.35)
6	FWF15009-S06S24W5M	.295(7.50)	.406(10.30)	.368(9.35)	13	FWF15009-S13S24W5M	.709(18.00)	.819(20.80)	.781(19.85)
7	FWF15009-S07S24W5M	.354(9.00)	.465(11.80)	.427(10.85)	14	FWF15009-S14S24W5M	.768(19.50)	.878(22.30)	.841(21.35)
8	FWF15009-S08S24W5M	.413(10.50)	.524(13.30)	.486(12.35)	15	FWF15009-S15S24W5M	.827(21.00)	.937(23.80)	.900(22.85)

 THIRD ANGLE PROJECTION	GENERAL TOLERANCES (UNLESS SPECIFIED)		APPROVE BY	DATE	PART NO.	ITEM NO.	 Leader Of Industry
	X.±.012(0.30)	X.±5'	FRANK	09/MAR/17	FWF15009-SXXS24W5M	FWF15009	
DESIGN UNITS	X.X±.008(0.20)	X.±2'	CHECKED BY	DATE	TITLE		REV 0
Inch (metric)	X.XX±.006(0.15)	.XX±1"	CHERRY	09/MAR/17	Wire to Board (Wafer) Pitch 1.5mm 180° Vertical (SMT)		
SCALE	X.XXX±.004(0.10)	.XX±0.5'	DRAWN BY	DATE	THIS DRAWING CONTAINS INFORMATION THAT IS PROPRIETARY TO TXGA INDUSTRIAL ELECTRONICS(S.Z)CO.,LTD AND SHOULD NOT BE USED WITHOUT WRITTEN PERMISSION		
5:1			KATE	09/MAR/17			