

REV	LOCATIONS	DESCRIPTION	DATE	REVISOR	APPD

SPECIFICATIONS

Electrical

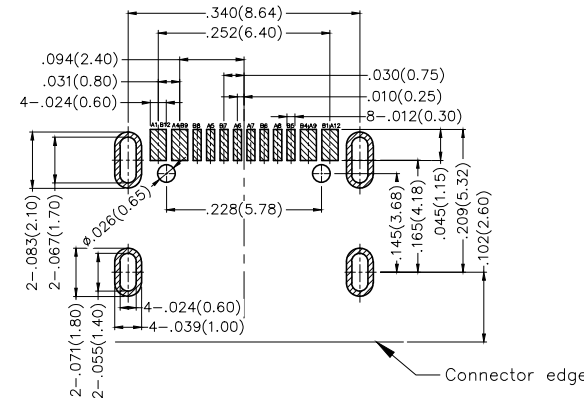
Current Rating: 1.5A AC(rms)/DC
Voltage Rating: 100V AC(rms)/DC
Contact Resistance: 40 mΩ Max
Withstanding Voltage: 500V AC r.m.s
Insulation Resistance: 100 MΩ Min
Temperature Range-Operating: -30°C~+85°C

Mechanical

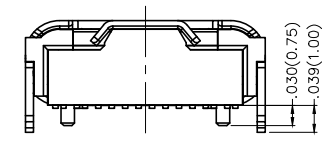
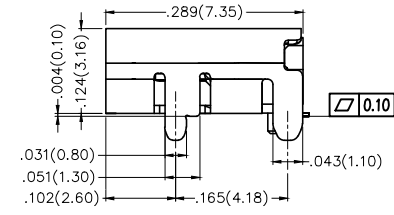
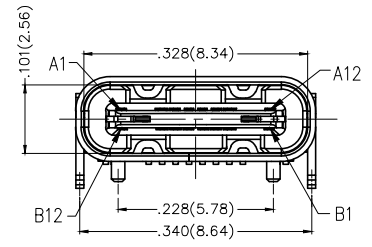
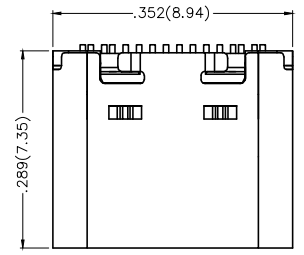
Insertion Force: 5~20N
Withdrawal Force: 8~20N
Durability: 10,000 Cycles

Material and Plating

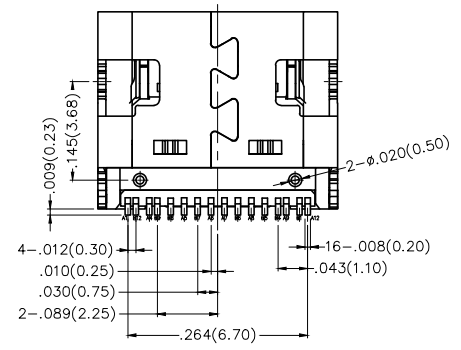
Housing: Thermoplastic (UL 94V-0) Black
Terminal: Copper Alloy/ Gold Plated
Shell: Stainless steel/ Nickel Plated
Shielding plate: Stainless steel/ Nickel Plated



Recommended P.C.Board Layout
General Tolerances: ±0.05mm



Circuits	A	Circuits	B
1	GND	12	GND
4	VBUS	9	VBUS
5	CC1	8	SBU2
6	DP1	7	DN2
7	DN1	6	DP2
8	SBU1	5	CC2
9	VBUS	4	VBUS
12	GND	1	GND



 THIRD ANGLE PROJECTION	GENERAL TOLERANCES (UNLESS SPECIFIED)		APPROVE BY FRANK	DATE 06/MAR/17	PART NO. FUS606-FSBK6M	ITEM NO. FUS606	 Leader Of Industry	
	DESIGN UNITS Inch (metric)	X.±.012(0.30)	X'.±5'	CHECKED BY CHERRY	DATE 06/MAR/17	TITLE USB C-type 90° Angle Female(SMT)(3.1)		REV 0
SCALE 5:1	SIZE A4	X.XX±.006(0.15)	XX'±1"	DRAWN BY KATE	DATE 06/MAR/17	THIS DRAWING CONTAINS INFORMATION THAT IS PROPRIETARY TO TXGA INDUSTRIAL ELECTRONICS(S,Z)CO.,LTD AND SHOULD NOT BE USED WITHOUT WRITTEN PERMISSION		