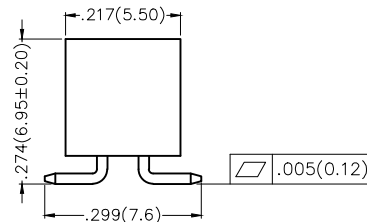
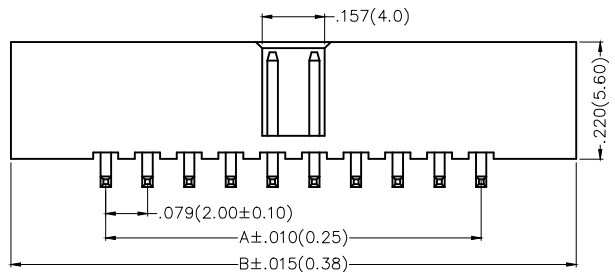
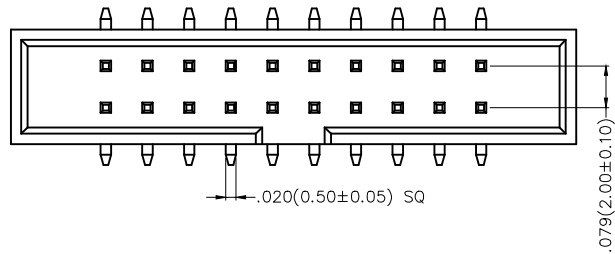


REV	LOCATIONS	DESCRIPTION	DATE	REVISER	APPD
1	△	Size changes	15/JAN/21	KATE	CHERRY



Electrical

Current Rating: 2.0A AC(rms)/DC  
Voltage Rating: 250V AC(rms)/DC  
Contact Resistance: 20 mΩ Max  
Insulation Resistance: 1000 MΩ MIN  
Withstanding Voltage: 500V AC r.m.s  
Temperature Range—Operating: -40°C~+105°C

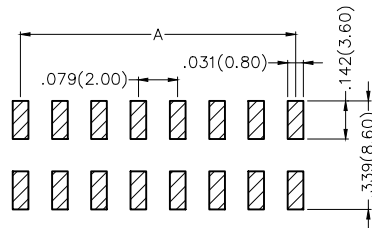
Material and Plating

Housing: Polyester (UL94V-0)  
Contact Pin: Brass  
Plating: Gold Plated/Selective gold in contact area, tin on tail

Ordering Information


FBH 200 03 — D XX S X XX 4 K6 X  
1 2 3 4 5 6 7 8 9 10 11

1	Category FBH—Box Header	2	Series Number 200—Pitch2.00mm	3	Distinction No. 03	4	Row Option D—Double Row	5	Circuits XX	6	Entry Angle S—Vertical
7	Plating 1—Gold Plated 3—Selective gold in contact area, tin on tail	8	Thickness of Plating 00—Gold Flash 05—5μ" Custom plate available	9	Material—Resin 4—PA9T	10	Color—Resin K6—Black	11	Packaging M—Reel K—Tray		



Recommended P.C.Board Layout

Circuits (n)	Part No.	Dimensions(in/mm)		Circuits (n)	Part No.	Dimensions(in/mm)	
		A	B			A	B
6	FBH20003-D06SXXX4K6X	.157(4.00)	.525(13.34)	24	FBH20003-D24SXXX4K6X	.866(22.00)	1.234(31.34)
8	FBH20003-D08SXXX4K6X	.236(6.00)	.604(15.34)	26	FBH20003-D26SXXX4K6X	.944(24.00)	1.313(33.34)
10	FBH20003-D10SXXX4K6X	.315(8.00)	.683(17.34)	30	FBH20003-D30SXXX4K6X	1.102(28.00)	1.470(37.34)
12	FBH20003-D12SXXX4K6X	.394(10.00)	.761(19.34)	34	FBH20003-D34SXXX4K6X	1.260(32.00)	1.628(41.34)
14	FBH20003-D14SXXX4K6X	.472(12.00)	.840(21.34)	40	FBH20003-D40SXXX4K6X	1.496(38.00)	1.864(47.34)
16	FBH20003-D16SXXX4K6X	.551(14.00)	.919(23.34)	44	FBH20003-D44SXXX4K6X	1.654(42.00)	2.021(51.34)
18	FBH20003-D18SXXX4K6X	.630(16.00)	.998(25.34)	50	FBH20003-D50SXXX4K6X	1.890(48.00)	2.257(57.34)
20	FBH20003-D20SXXX4K6X	.709(18.00)	1.076(27.34)				

THIRD ANGLE PROJECTION	GENERAL TOLERANCES (UNLESS SPECIFIED)		APPROVE BY FRANK	DATE 29/AUG/13	PART NO. FBH20003-DXXSXXX4K6K	ITEM NO. FBH20003	 Leader Of Industry
	DESIGN UNITS Inch (metric)	X.±.012(0.30) X.X±.008(0.20) X.XX±.006(0.15) X.XXX±.004(0.10)	X.'±5" X.'±2" .XX'±1" .XXX'±0.5"	CHECKED BY CHERRY	DATE 29/AUG/13	TITLE Wire to Board(Box Header) Pitch 2.00mm Vertical 180°(SMT)	
SCALE 5:1	SIZE A4		DRAWN BY JACOB	DATE 29/AUG/13	THIS DRAWING CONTAINS INFORMATION THAT IS PROPRIETARY TO TXGA INDUSTRIAL ELECTRONICS(S.Z)CO.,LTD AND SHOULD NOT BE USED WITHOUT WRITTEN PERMISSION		