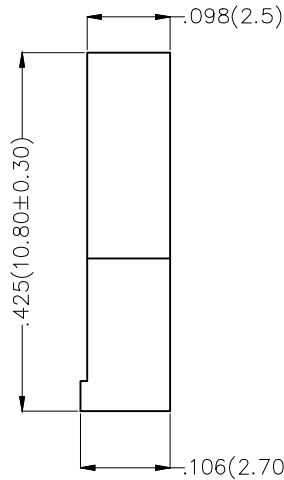
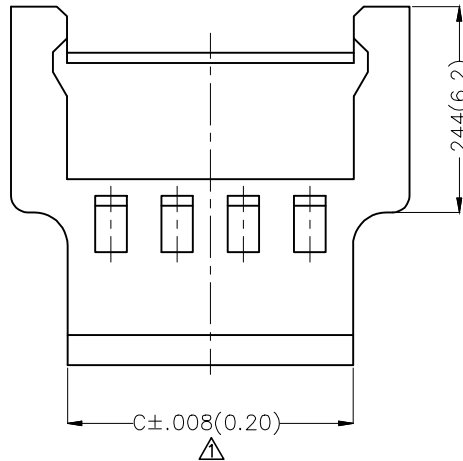
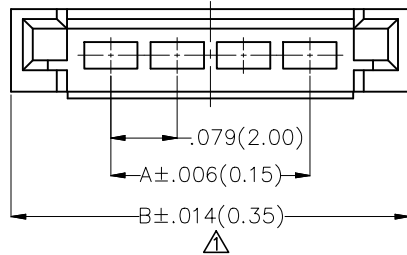


REV	LOCATIONS	DESCRIPTION	DATE	REVISER	APPD
1	△	Size changes	26/APR/21	KATE	JOHNNY

Electrical  
 Temperature Range—Operating: -25°C~+85°C  
 Material  
 Housing: PA66( UL 94V-2)  
 Applicable Terminal: FT20010  
 Mates With(Housing): FHG20011 Series



Circuits (n)	Part No.	Dimensions(in/mm)		
		A	B	C △
2	FHG20012-S02F2W1B	.079(2.00)	.315(8.00)	.181(4.60)
3	FHG20012-S03F2W1B	.157(4.00)	.394(10.00)	.260(6.60)
4	FHG20012-S04F2W1B	.236(6.00)	.472(12.00)	.339(8.60)
5	FHG20012-S05F2W1B	.315(8.00)	.551(14.00)	.417(10.60)
6	FHG20012-S06F2W1B	.394(10.00)	.630(16.00)	.496(12.60)
7	FHG20012-S07F2W1B	.472(12.00)	.709(18.00)	.575(14.60)
8	FHG20012-S08F2W1B	.551(14.00)	.787(20.00)	.654(16.60)

### Ordering Information

FHG 200 12 — S XX F 2 W1 B  
 1 2 3 4 5 6 7 8 9

1 Category FHG-Housing	2 Series Number 200-Pitch2.00mm	3 Distinction No. 12	4 Row Option S-Single Row
5 Circuits XX	6 Type F-Female	7 Material-Resin 2-PA66	8 Color-Resin K6-Black
		9 Packaging B-PE Bag	

 THIRD ANGLE PROJECTION	GENERAL TOLERANCES (UNLESS SPECIFIED)		APPROVE BY FRANK	DATE 25/JUN/13	PART NO. FHG20012-SXXF2W1B	ITEM NO. FHG20012	 Leader Of Industry	
	X.±.012(0.30)	X.'±5'	CHECKED BY JACOB	DATE 25/JUN/13	TITLE Wire to Board Pitch 2.0mm(Housing)			REV 1
	DESIGN UNITS Inch (metric)	X.X±.008(0.20)	X.'±2'	DRAWN BY CHERRY	DATE 25/JUN/13	THIS DRAWING CONTAINS INFORMATION THAT IS PROPRIETARY TO TXGA INDUSTRIAL ELECTRONICS(S.Z)CO.,LTD AND SHOULD NOT BE USED WITHOUT WRITTEN PERMISSION		SHEET NO. 1/1
	SCALE 5:1	SIZE A4	X.XX±.006(0.15)					