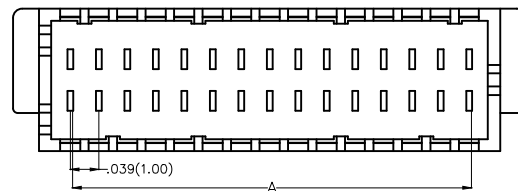
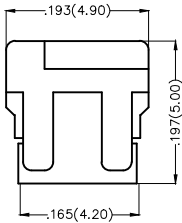
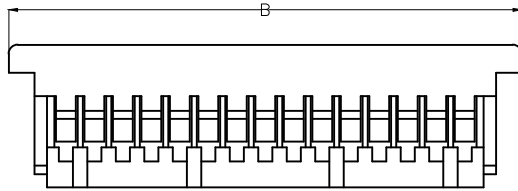


1 2 3 4 5 6 7 8

REV	LOCATIONS	DESCRIPTION	DATE	REVISER	APPD

Electrical
 Temperature Range—Operating: -25°C~+85°C
 Material
 Housing: PA66(UL 94V-0)
 Applicable Terminal: FT10001
 Mates With: FWF10003,FWF10004 Series



Circuits (n)	Part No.	Dimensions(in/mm)	
		A	B
8	FHG10002-D08M2W5B	.118(3.00)	.276(7.00)
10	FHG10002-D10M2W5B	.157(4.00)	.315(8.00)
12	FHG10002-D12M2W5B	.197(5.00)	.354(9.00)
14	FHG10002-D14M2W5B	.236(6.00)	.394(10.00)
16	FHG10002-D16M2W5B	.276(7.00)	.433(11.00)
20	FHG10002-D20M2W5B	.354(9.00)	.512(13.00)
30	FHG10002-D30M2W5B	.551(14.00)	.709(18.00)
40	FHG10002-D40M2W5B	.748(19.00)	.906(23.00)
50	FHG10002-D50M2W5B	.945(24.00)	1.102(28.00)
60	FHG10002-D60M2W5B	1.142(29.00)	1.299(33.00)

Ordering Information

FHG 100 02 — D XX M 2 W5 B
 1 2 3 4 5 6 7 8 9

1	Category FHG—Housing	2	Series Number 100—Pitch1.00mm	3	Distinction No. 02	4	Row Option Double row	5	Circuits XX
6	Entry Type M—Male	7	Material—Resin 2—PA66	8	Color—Resin W5—White	9	Packaging B—PE Bag		

 THIRD ANGLE PROJECTION DESIGN UNITS Inch (metric) SCALE 5:1 SIZE A4	GENERAL TOLERANCES (UNLESS SPECIFIED)		APPROVE BY FRANK	DATE 25/JUN/13	PART NO. FHG10002-DXXM2W5B	ITEM NO. FHG10002	 Leader Of Industry	
	X.±.012(0.30)	X.±5'	CHECKED BY JACOB	DATE 25/JUN/13	TITLE Wire to Board Pitch 1.0mm(Housing)			REV 0
	X.X±.008(0.20)	.X'±2'	DRAWN BY CHERRY	DATE 25/JUN/13	THIS DRAWING CONTAINS INFORMATION THAT IS PROPRIETARY TO TXGA INDUSTRIAL ELECTRONICS(S.Z)CO.,LTD AND SHOULD NOT BE USED WITHOUT WRITTEN PERMISSION			
	X.XX±.006(0.15)	.XX±1'						
X.XXX±.004(0.10)	.XXX±0.5'							

1 2 3 4 5 6 7 8