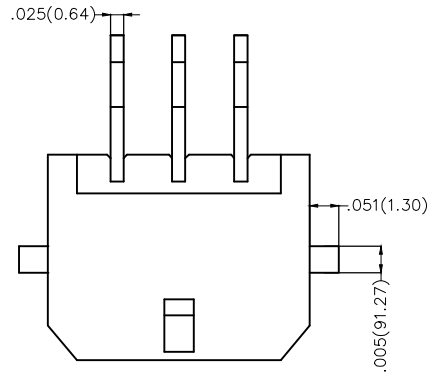
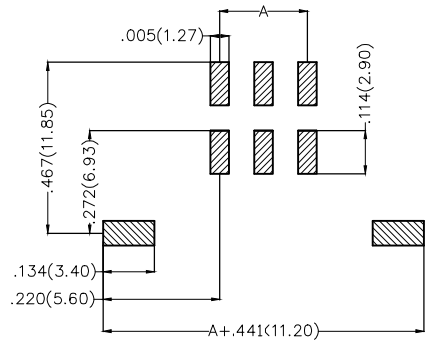
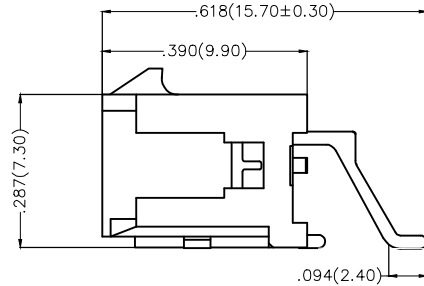
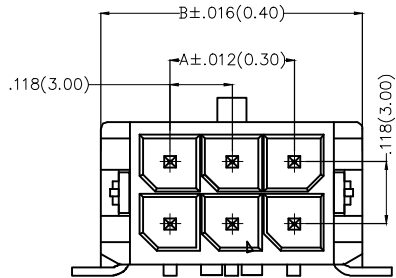


REV	LOCATIONS	DESCRIPTION	DATE	REVISER	APPD



Electrical
 Current Rating: 5.0A AC(rms)/DC
 Voltage Rating: 250V AC(rms)/DC
 Contact Resistance: 10 mΩ Max
 Insulation Resistance: 1000 MΩ MIN
 Withstanding Voltage: 1500V AC r.m.s
 Temperature Range—Operating: -25°C ~ +85°C

Material and Plating
 Housing: LCP(UL 94V-0)
 Contact Pin: Brass
 Plating: Tin Plated



Recommended P.C.Board Layout

Ordering Information



FWF 300 22 — D XX B 2 3 K6 M
 1 2 3 4 5 6 7 8 9 10

1 Category FWF—Wafer	2 Series Number 300—Pitch3.0mm	3 Distinction No. 22	4 Row Option D—Double Row	5 Circuits XX	6 Entry Angle B—90° Angle
7 Plating 2—Tin Plated	8 Material 3—LCP	9 Plastic Colour K6—Black	10 Packaging M—Reel		

 THIRD ANGLE PROJECTION	GENERAL TOLERANCES (UNLESS SPECIFIED)		APPROVE BY FRANK	DATE 18/JUN/13	PART NO. FWF30022-DXXB23K6M	ITEM NO. FWF30022	 Leader Of Industry	
	DESIGN UNITS Inch (metric)	X.±.012(0.30) X.X±.008(0.20) X.XX±.006(0.15) X.XXX±.004(0.10)	X'±5" 'X±2" .XX±1" .XXX±0.5"	CHECKED BY CHERRY	DATE 18/JUN/13	TITLE Wire to Board (Wafer) Pitch 3.0mm 90° Angled (SMT)		REV 0
SCALE 5:1	SIZE A4	DRAWN BY KEVIN		DATE 18/JUN/13	THIS DRAWING CONTAINS INFORMATION THAT IS PROPRIETARY TO TXGA INDUSTRIAL ELECTRONICS(S.Z)CO.,LTD AND SHOULD NOT BE USED WITHOUT WRITTEN PERMISSION			

REV	LOCATIONS	DESCRIPTION	DATE	REVISER	APPD

Circuits (n)	Part No.	Dimensions(in/mm)			Circuits (n)	Part No.	Dimensions(in/mm)		
		A	B	C			A	B	C
2	FWF30022-D02B23K6M	-	.262(6.65)	.169(4.30)	14	FWF30022-D14B23K6M	.709(18.00)	.970(24.65)	.878(22.30)
4	FWF30022-D04B23K6M	.118(3.00)	.380(9.65)	.287(7.30)	16	FWF30022-D16B23K6M	.827(21.00)	1.089(27.65)	.996(25.30)
6	FWF30022-D06B23K6M	.236(6.00)	.498(12.65)	.406(10.30)	18	FWF30022-D18B23K6M	.945(24.00)	1.207(30.65)	1.114(28.30)
8	FWF30022-D08B23K6M	.354(9.00)	.616(15.65)	.524(13.30)	20	FWF30022-D20B23K6M	1.063(27.00)	1.325(33.65)	1.232(31.30)
10	FWF30022-D10B23K6M	.472(12.00)	.734(18.65)	.642(16.30)	22	FWF30022-D22B23K6M	1.181(30.00)	1.443(36.65)	1.350(34.30)
12	FWF30022-D12B23K6M	.591(15.00)	.852(21.65)	.760(19.30)	24	FWF30022-D24B23K6M	1.299(33.00)	1.561(39.65)	1.469(37.30)

 THIRD ANGLE PROJECTION	GENERAL TOLERANCES (UNLESS SPECIFIED)		APPROVE BY	DATE	PART NO.	ITEM NO.	 Leader Of Industry
	X.±.012(0.30)	X.*±5'	FRANK	18/JUN/13	FWF30022-DXXB23K6M	FWF30022	
DESIGN UNITS Inch (metric)	X.X±.008(0.20)	X.*±2'	CHECKED BY	DATE	TITLE		REV 0 SHEET NO. 2/2
SCALE	X.XX±.006(0.15)	.XX±1"	CHERRY	18/JUN/13	Wire to Board (Wafer) Pitch 3.0mm 90° Angled (SMT)		
5:1	X.XXX±.004(0.10)	.XXX*±0.5'	DRAWN BY	DATE	THIS DRAWING CONTAINS INFORMATION THAT IS PROPRIETARY TO TXGA INDUSTRIAL ELECTRONICS(S,Z)CO.,LTD AND SHOULD NOT BE USED WITHOUT WRITTEN PERMISSION		
SIZE A4			KEVIN	18/JUN/13			