

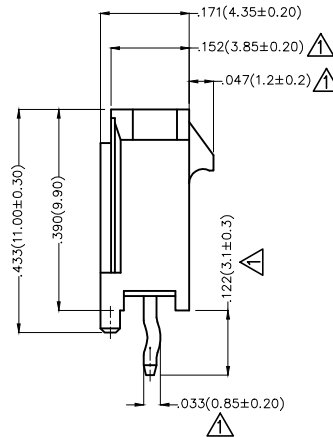
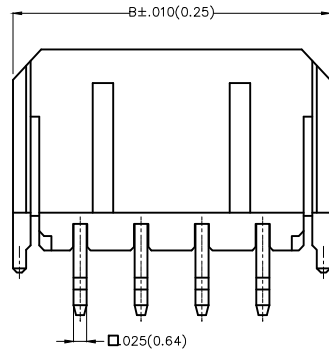
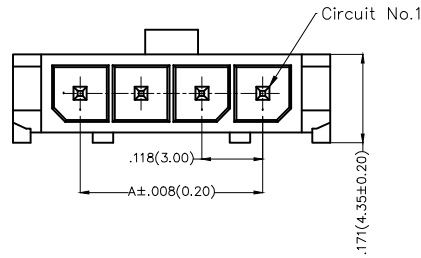
REV	LOCATIONS	DESCRIPTION	DATE	REVISER	APPD
1	△	Dimensions change	18/MAR/20	KATE	CHERRY

Electrical

Current Rating: 5.0A AC(rms)/DC  
Voltage Rating: 250V AC(rms)/DC  
Contact Resistance: 10 m Ω Max  
Insulation Resistance: 1000 M Ω MIN  
Withstanding Voltage: 1500V AC r.m.s  
Temperature Range—Operating: -25°C~+85°C

Material and Plating

Housing: PA66( UL 94V-0)  
Contact Pin: Brass  
Plating: Tin Plated

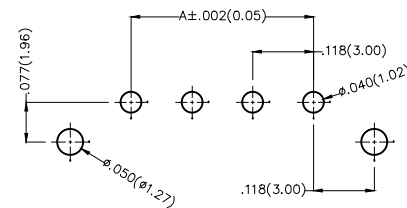


Circuits (n)	Part No.	Dimensions(in/mm)	
		A	B
2	FWF30004-S02S22K6B	.118(3.00)	.380(9.65)
3	FWF30004-S03S22K6B	.236(6.00)	.498(12.65)
4	FWF30004-S04S22K6B	.354(9.00)	.616(15.65)
5	FWF30004-S05S22K6B	.472(12.00)	.734(18.65)
6	FWF30004-S06S22K6B	.591(15.00)	.852(21.65)
7	FWF30004-S07S22K6B	.709(18.00)	.967(24.65)
8	FWF30004-S08S22K6B	.827(21.00)	1.089(27.65)
9	FWF30004-S09S22K6B	.945(24.00)	1.207(30.65)
10	FWF30004-S10S22K6B	1.063(27.00)	1.325(33.65)
11	FWF30004-S11S22K6B	1.181(30.00)	1.443(36.65)
12	FWF30004-S12S22K6B	1.299(33.00)	1.561(39.65)

Ordering Information

FWF 300 04 - S XX S 2 2 K6 B  
1 2 3 4 5 6 7 8 9 10

1   Category FWF—Wafer	2   Series Number 300—Pitch 3.0mm	3   Distinction No. 04	4   Row Option S—Single Row	5   Circuits XX	6   Entry Angle S—180° Vertical
7   Plating 2—Tin Plated	8   Material—Resin 2—PA66	9   Color—Resin K6—Black	10   Packaging B—PE Bag		



Recommended P.C.Board Layout  
General tolerances: ±.002(0.05)

THIRD ANGLE PROJECTION		GENERAL TOLERANCES (UNLESS SPECIFIED)		APPROVE BY	DATE	PART NO.	ITEM NO.	TXGA Leader Of Industry
DESIGN UNITS Inch (metric)	SCALE	SIZE	X.±.012(0.30)	FRANK	01/JUL/13	FWF30004-SXXS22K6B	FWF30004	
	5:1	A4	X.X±.008(0.20)	CHERRY	01/JUL/13	TITLE Wire to Board (Wafer) Pitch 3.0mm 180° Vertical (DIP)		
				X.XX±.006(0.15)	JACOB	01/JUL/13	THIS DRAWING CONTAINS INFORMATION THAT IS PROPRIETARY TO TXGA INDUSTRIAL ELECTRONICS(S.Z)CO.,LTD AND SHOULD NOT BE USED WITHOUT WRITTEN PERMISSION	