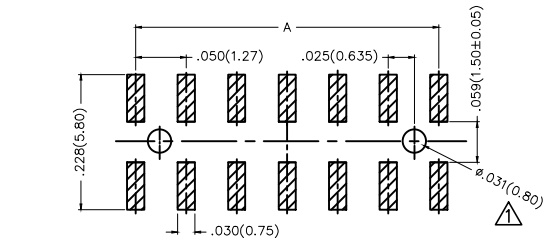
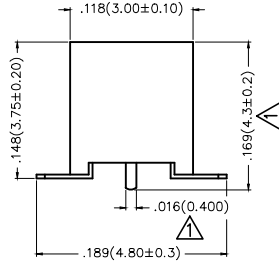
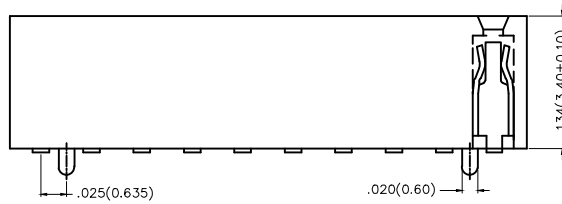
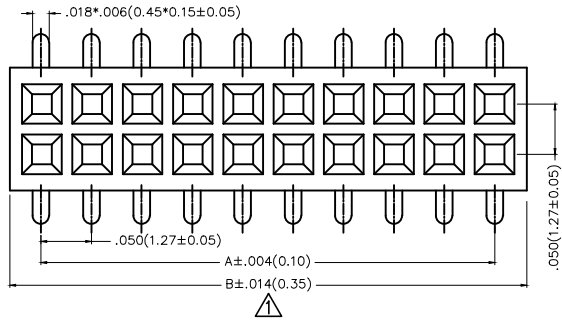


REV	LOCATIONS	DESCRIPTION	DATE	REVISER	APPD
1	△	Size changes	13/AUG/20	KATE	CHERRY



Recommended P.C.Board Layout

Electrical

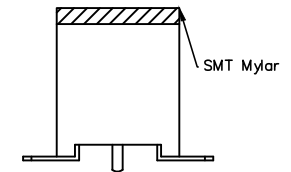
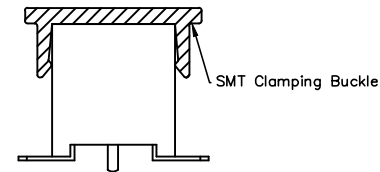
Current Rating: 1A AC(rms)/DC
Voltage Rating: 250V AC(rms)/DC
Contact Resistance: 20 mΩ Max
Insulation Resistance: 500 MΩ MIN
Withstanding Voltage: 100V AC r.m.s
Temperature Range-Operating: -25°C~+85°C

Material and Plating

Housing: PA6T(UL 94V-0)
Contact Pin: Phosphor Bronze
Plating: Gold Plated/Selective gold in contact area, tin on tail

Packing: M-Reel(With Cap)


Packing: M1-Reel(With Mylar)



Ordering Information

FFH 127 09 - D XX S X XX 4 K6 XX
1 2 3 4 5 6 7 8 9 10 11

1	Category FFH-Female Header	2	Series Number 127-Pitch1.27mm	3	Distinction No. 09	4	Row Option D-Double Row	5	Circuits XX	6	Entry Angle S-180° Vertical
7	Plating 1-Gold Plated 3-Selective gold in contact area, tin on tail	8	Thickness of Plating 00-Gold Flash 05-5μ" Custom plate available	9	Material-Resin 4-PA6T	10	Color-Resin K6-Black	11	Packaging M-Reel(With Cap) M1-Reel(With Mylar)		

THIRD ANGLE PROJECTION	GENERAL TOLERANCES (UNLESS SPECIFIED)		APPROVE BY FRANK	DATE 10/JUL/13	PART NO. FFH12709-DXXSXX4K6XX	ITEM NO. FFH12709	 Leader Of Industry	
	DESIGN UNITS Inch (metric)	X.±.012(0.30) X.X±.008(0.20) X.XX±.006(0.15) X.XXX±.004(0.10)	X.'±5' X.'±2' .XX'±1" .XXX'±0.5'	CHECKED BY CHERRY	DATE 10/JUL/13	TITLE Board to Board (Female Header) Pitch 1.27mm 180° Vertical (SMT)		
SCALE 5:1	SIZE A4	DRAWN BY JACOB		DATE 10/JUL/13	THIS DRAWING CONTAINS INFORMATION THAT IS PROPRIETARY TO TXGA INDUSTRIAL ELECTRONICS(S.Z)CO.,LTD AND SHOULD NOT BE USED WITHOUT WRITTEN PERMISSION		REV 1	SHEET NO. 1/2

1 2 3 4 5 6 7 8

REV	LOCATIONS	DESCRIPTION	DATE	REVISER	APPD

A

A

B

B

C

C

D

D



E

E

F

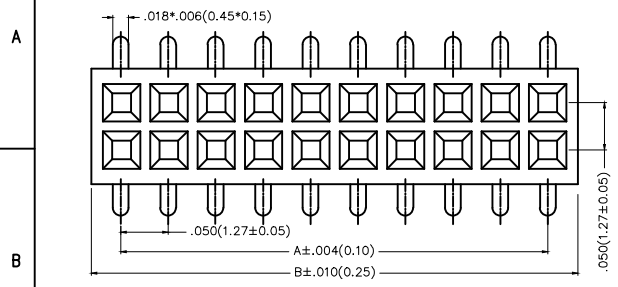
F

Circuits (n)	Part No.	Dimensions(in/mm)		Circuits (n)	Part No.	Dimensions(in/mm)	
		A	B			A	B
8	FFH12709-D08SXXX4K6XX	.150(3.81)	.214(5.43)	46	FFH12709-D46SXXX4K6XX	1.100(27.94)	1.164(29.56)
10	FFH12709-D10SXXX4K6XX	.200(5.08)	.264(6.70)	48	FFH12709-D48SXXX4K6XX	1.150(29.21)	1.214(30.83)
12	FFH12709-D12SXXX4K6XX	.250(6.35)	.314(7.97)	50	FFH12709-D50SXXX4K6XX	1.200(30.48)	1.264(32.10)
14	FFH12709-D14SXXX4K6XX	.300(7.62)	.364(9.24)	52	FFH12709-D52SXXX4K6XX	1.250(31.75)	1.314(33.37)
16	FFH12709-D16SXXX4K6XX	.350(8.89)	.414(10.51)	54	FFH12709-D54SXXX4K6XX	1.300(33.02)	1.364(34.64)
18	FFH12709-D18SXXX4K6XX	.400(10.16)	.464(11.78)	56	FFH12709-D56SXXX4K6XX	1.350(34.29)	1.414(35.91)
20	FFH12709-D20SXXX4K6XX	.450(11.43)	.514(13.05)	58	FFH12709-D58SXXX4K6XX	1.400(35.56)	1.464(37.18)
22	FFH12709-D22SXXX4K6XX	.500(12.70)	.564(14.32)	60	FFH12709-D60SXXX4K6XX	1.450(36.83)	1.514(38.45)
24	FFH12709-D24SXXX4K6XX	.550(13.97)	.614(15.59)	62	FFH12709-D62SXXX4K6XX	1.500(38.10)	1.564(39.72)
26	FFH12709-D26SXXX4K6XX	.600(15.24)	.664(16.86)	64	FFH12709-D64SXXX4K6XX	1.550(39.37)	1.614(40.99)
28	FFH12709-D28SXXX4K6XX	.650(16.51)	.714(18.13)	66	FFH12709-D66SXXX4K6XX	1.600(40.64)	1.664(42.26)
30	FFH12709-D30SXXX4K6XX	.700(17.78)	.764(19.40)	68	FFH12709-D68SXXX4K6XX	1.650(41.91)	1.714(43.53)
32	FFH12709-D32SXXX4K6XX	.750(19.05)	.814(20.67)	70	FFH12709-D70SXXX4K6XX	1.700(43.18)	1.764(44.80)
34	FFH12709-D34SXXX4K6XX	.800(20.32)	.864(21.94)	72	FFH12709-D72SXXX4K6XX	1.750(44.45)	1.814(46.07)
36	FFH12709-D36SXXX4K6XX	.850(21.59)	.914(23.21)	74	FFH12709-D74SXXX4K6XX	1.800(45.72)	1.864(47.34)
38	FFH12709-D38SXXX4K6XX	.900(22.86)	.964(24.48)	76	FFH12709-D76SXXX4K6XX	1.850(46.99)	1.914(48.61)
40	FFH12709-D40SXXX4K6XX	.950(24.13)	1.014(25.75)	78	FFH12709-D78SXXX4K6XX	1.900(48.26)	1.964(49.88)
42	FFH12709-D42SXXX4K6XX	1.000(25.40)	1.064(27.02)	80	FFH12709-D80SXXX4K6XX	1.950(49.53)	2.014(51.55)
44	FFH12709-D44SXXX4K6XX	1.050(26.67)	1.114(28.29)				

 THIRD ANGLE PROJECTION	GENERAL TOLERANCES (UNLESS SPECIFIED)		APPROVE BY FRANK	DATE 10/JUL/13	PART NO. FFH12709-DXXSXXX4K6XX	ITEM NO. FFH12709	 Leader Of Industry	
	X.±.012(0.30)	X.±5'	CHECKED BY CHERRY	DATE 10/JUL/13	TITLE Board to Board (Female Header) Pitch 1.27mm 180° Vertical (SMT)			REV 1
	DESIGN UNITS Inch (metric)	X.X±.008(0.20)	X.±2'	DRAWN BY JACOB	DATE 10/JUL/13	THIS DRAWING CONTAINS INFORMATION THAT IS PROPRIETARY TO TXGA INDUSTRIAL ELECTRONICS(S.Z)CO.,LTD AND SHOULD NOT BE USED WITHOUT WRITTEN PERMISSION		
	SCALE 5:1	SIZE A4	X.XX±.006(0.15)	X.XX±1'	X.XXX±.004(0.10)	X.XX±0.5'		

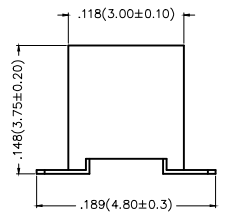
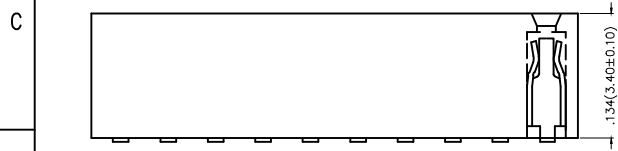
1 2 3 4 5 6 7 8

REV	LOCATIONS	DESCRIPTION	DATE	REVISER	APPD



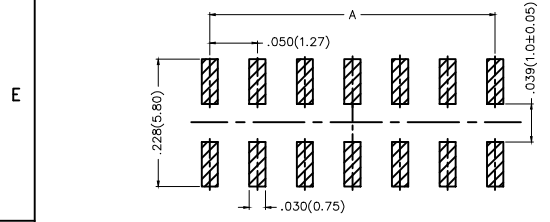
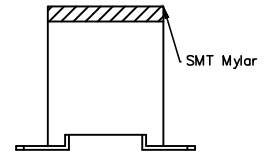
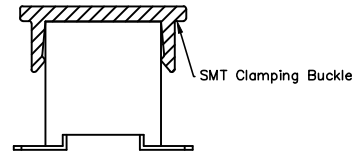
Electrical
 Current Rating: 1A AC(rms)/DC
 Voltage Rating: 250V AC(rms)/DC
 Contact Resistance: 20 mΩ Max
 Insulation Resistance: 500 MΩ MIN
 Withstanding Voltage: 100V AC r.m.s
 Temperature Range—Operating: -25°C~+85°C

Material and Plating
 Housing: PA6T(UL 94V-0)
 Contact Pin: Phosphor Bronze
 Plating: Gold Plated/Selective gold in contact area, tin on tail



Packing: M—Reel(With Cap)

Packing: M1—Reel(With Mylar)




Recommended P.C.Board Layout

Ordering Information



FFH 127 09 — D XX S X XX 4 K6 XX A
 1 2 3 4 5 6 7 8 9 10 11 12

1 Category FFH—Female Header	2 Series Number 127—Pitch1.27mm	3 Distinction No. 09	4 Row Option D—Double Row	5 Circuits XX	6 Entry Angle S—180° Vertical
7 Plating 1—Gold Plated 3—Selective gold in contact area, tin on tail	8 Thickness of Plating 00—Gold Flash 05—5μ" Custom plate available	9 Material—Resin 4—PA6T	10 Color—Resin K6—Black	11 Packaging M—Reel(With Cap) M1—Reel(With Mylar)	12 Type A—Without Position

THIRD ANGLE PROJECTION	GENERAL TOLERANCES (UNLESS SPECIFIED)		APPROVE BY FRANK	DATE 10/JUL/13	PART NO. FFH12709-DXXSXXX4K6XXA	ITEM NO. FFH12709	 Leader Of Industry
	DESIGN UNITS Inch (metric)	X.X±.012(0.30) X'±5"	CHECKED BY CHERRY	DATE 10/JUL/13	TITLE Board to Board (Female Header) Pitch 1.27mm 180° Vertical (SMT)		
SCALE 5:1	SIZE A4	X.XX±.006(0.15) .XX'±1"	DRAWN BY JACOB	DATE 10/JUL/13	THIS DRAWING CONTAINS INFORMATION THAT IS PROPRIETARY TO TXGA INDUSTRIAL ELECTRONICS(S.Z.)CO.,LTD AND SHOULD NOT BE USED WITHOUT WRITTEN PERMISSION		

REV	LOCATIONS	DESCRIPTION	DATE	REVISER	APPD

Circuits (n)	Part No.	Dimensions(in/mm)		Circuits (n)	Part No.	Dimensions(in/mm)	
		A	B			A	B
8	FFH12709-D08SXXX4K6XXA	.150(3.81)	.214(5.43)	46	FFH12709-D46SXXX4K6XXA	1.100(27.94)	1.164(29.56)
10	FFH12709-D10SXXX4K6XXA	.200(5.08)	.264(6.70)	48	FFH12709-D48SXXX4K6XXA	1.150(29.21)	1.214(30.83)
12	FFH12709-D12SXXX4K6XXA	.250(6.35)	.314(7.97)	50	FFH12709-D50SXXX4K6XXA	1.200(30.48)	1.264(32.10)
14	FFH12709-D14SXXX4K6XXA	.300(7.62)	.364(9.24)	52	FFH12709-D52SXXX4K6XXA	1.250(31.75)	1.314(33.37)
16	FFH12709-D16SXXX4K6XXA	.350(8.89)	.414(10.51)	54	FFH12709-D54SXXX4K6XXA	1.300(33.02)	1.364(34.64)
18	FFH12709-D18SXXX4K6XXA	.400(10.16)	.464(11.78)	56	FFH12709-D56SXXX4K6XXA	1.350(34.29)	1.414(35.91)
20	FFH12709-D20SXXX4K6XXA	.450(11.43)	.514(13.05)	58	FFH12709-D58SXXX4K6XXA	1.400(35.56)	1.464(37.18)
22	FFH12709-D22SXXX4K6XXA	.500(12.70)	.564(14.32)	60	FFH12709-D60SXXX4K6XXA	1.450(36.83)	1.514(38.45)
24	FFH12709-D24SXXX4K6XXA	.550(13.97)	.614(15.59)	62	FFH12709-D62SXXX4K6XXA	1.500(38.10)	1.564(39.72)
26	FFH12709-D26SXXX4K6XXA	.600(15.24)	.664(16.86)	64	FFH12709-D64SXXX4K6XXA	1.550(39.37)	1.614(40.99)
28	FFH12709-D28SXXX4K6XXA	.650(16.51)	.714(18.13)	66	FFH12709-D66SXXX4K6XXA	1.600(40.64)	1.664(42.26)
30	FFH12709-D30SXXX4K6XXA	.700(17.78)	.764(19.40)	68	FFH12709-D68SXXX4K6XXA	1.650(41.91)	1.714(43.53)
32	FFH12709-D32SXXX4K6XXA	.750(19.05)	.814(20.67)	70	FFH12709-D70SXXX4K6XXA	1.700(43.18)	1.764(44.80)
34	FFH12709-D34SXXX4K6XXA	.800(20.32)	.864(21.94)	72	FFH12709-D72SXXX4K6XXA	1.750(44.45)	1.814(46.07)
36	FFH12709-D36SXXX4K6XXA	.850(21.59)	.914(23.21)	74	FFH12709-D74SXXX4K6XXA	1.800(45.72)	1.864(47.34)
38	FFH12709-D38SXXX4K6XXA	.900(22.86)	.964(24.48)	76	FFH12709-D76SXXX4K6XXA	1.850(46.99)	1.914(48.61)
40	FFH12709-D40SXXX4K6XXA	.950(24.13)	1.014(25.75)	78	FFH12709-D78SXXX4K6XXA	1.900(48.26)	1.964(49.88)
42	FFH12709-D42SXXX4K6XXA	1.000(25.40)	1.064(27.02)	80	FFH12709-D80SXXX4K6XXA	1.950(49.53)	2.014(51.55)
44	FFH12709-D44SXXX4K6XXA	1.050(26.67)	1.114(28.29)				

 THIRD ANGLE PROJECTION	GENERAL TOLERANCES (UNLESS SPECIFIED)		APPROVE BY FRANK	DATE 10/JUL/13	PART NO. FFH12709-DXXSXXX4K6XX	ITEM NO. FFH12709	 Leader Of Industry	
	DESIGN UNITS Inch (metric)	X.±.012(0.30) X.X±.008(0.20) X.XX±.006(0.15) X.XXX±.004(0.10)	X.±5' X.±2' .XX±1' .XXX±0.5'	CHECKED BY CHERRY	DATE 10/JUL/13	TITLE Board to Board (Female Header) Pitch 1.27mm 180° Vertical (SMT)		REV 0
SCALE 5:1	SIZE A4		DRAWN BY JACOB	DATE 10/JUL/13	THIS DRAWING CONTAINS INFORMATION THAT IS PROPRIETARY TO TXGA INDUSTRIAL ELECTRONICS(S.Z)CO.,LTD AND SHOULD NOT BE USED WITHOUT WRITTEN PERMISSION			