

REV	LOCATIONS	DESCRIPTION	DATE	REVISER	APPD
1	△	Size change	06/JUL/16	KATE	FRANK
2	△	MPQ: Change 1,500 pcs into 1,000 pcs / reel	25/FEB/20	KATE	CHERRY

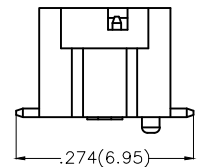
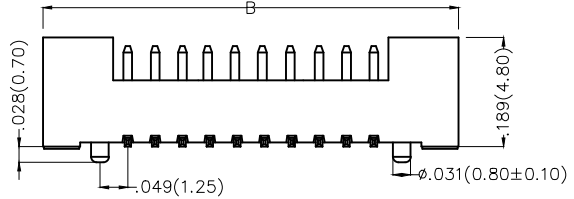
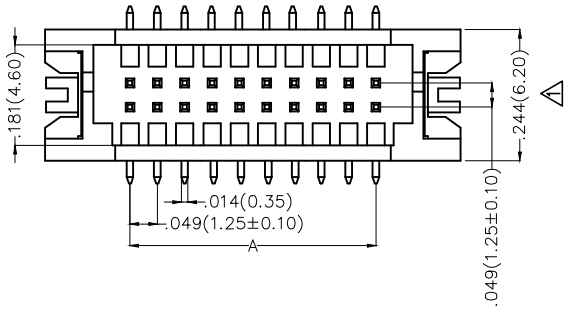
Electrical

Current Rating: 1.0A AC(rms)/DC
Voltage Rating: 125V AC(rms)/DC
Contact Resistance: 20 mΩ Max
Insulation Resistance: 100 MΩ MIN
Withstanding Voltage: 250V AC r.m.s
Temperature Range—Operating: -25°C ~+85°C

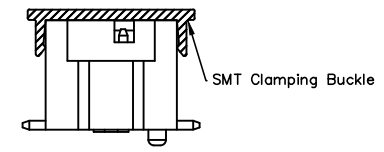
Material and Plating

Housing: PA9T(UL 94V-0)
Contact Pin: Brass
Plating: Gold plated

Circuits (n)	Part No.	Dimensions(in/mm)	
		A	B
10	FWF12511-D10S14W5M	.197(5.00)	.492(12.50)
20	FWF12511-D20S14W5M	.443(11.25)	.738(18.75)
30	FWF12511-D30S14W5M	.689(17.50)	.984(25.00)
40	FWF12511-D40S14W5M	.935(23.75)	1.230(31.25)

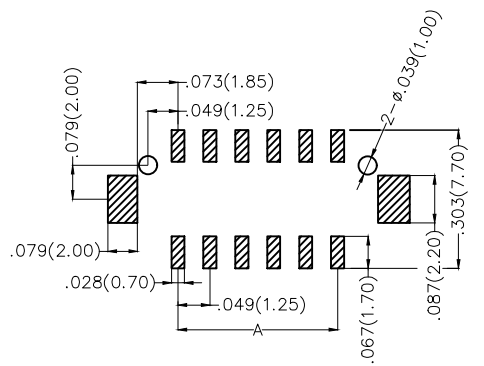


Packing: M—Reel(With Cap)



FWF 125 11 — D XX S 1 4 W5 M
1 2 3 4 5 6 7 8 9 10

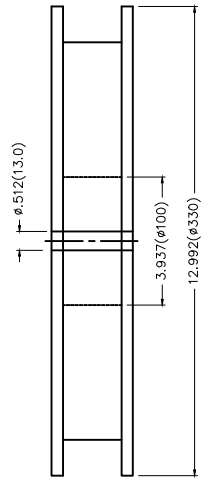
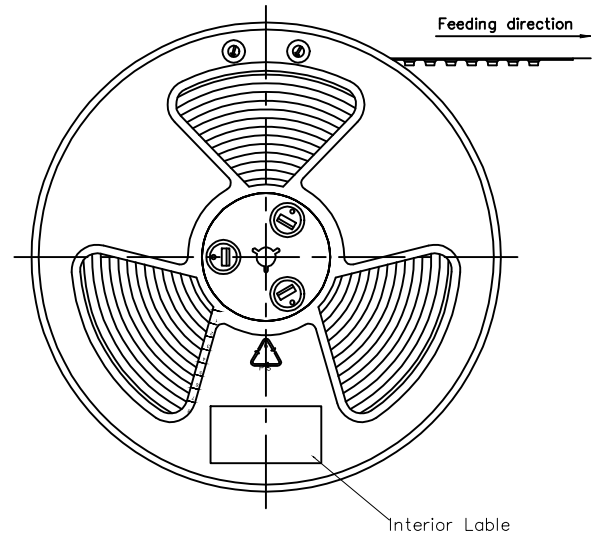
1	Category FWF—Wafer	2	Series Number 125—Pitch1.25mm	3	Distinction No. 11	4	Row Option Double Row	5	Circuits XX	6	Entry Angle S—180° Vertical
7	Plating 1—Gold Plated	8	Material—Resin 4—PA9T	9	Color—Resin W5—White	10	Packaging M—Reel(With Cap)				



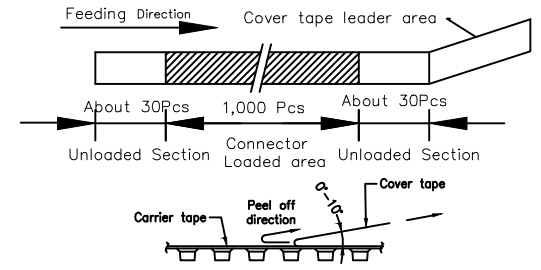
Recommended P.C.Board Layout

THIRD ANGLE PROJECTION		GENERAL TOLERANCES (UNLESS SPECIFIED)		APPROVE BY	DATE	PART NO.	ITEM NO.	TXGA Leader Of Industry	
DESIGN UNITS Inch (metric)	X.±.012(0.30)	X.±5°	CHECKED BY	FRANK	8/JUL/13	FWF12511-DXXS14W5M	FWF12511	REV 2	SHEET NO. 1/2
	X.X±.008(0.20)	.X±2°	JACOB	DATE	8/JUL/13	TITLE Wire to Board (Wafer) Pitch 1.25mm 180° Vertical (SMT)		THIS DRAWING CONTAINS INFORMATION THAT IS PROPRIETARY TO TXGA INDUSTRIAL ELECTRONICS(S.Z)CO.,LTD AND SHOULD NOT BE USED WITHOUT WRITTEN PERMISSION	
SCALE 5:1	SIZE A4	X.XX±.006(0.15)	.XX±1°	DRAWN BY	DATE				
		X.XXX±.004(0.10)	.XXX±0.5°	CHERRY	8/JUL/13				

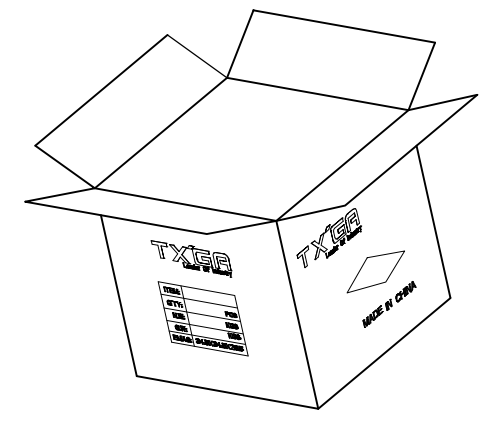
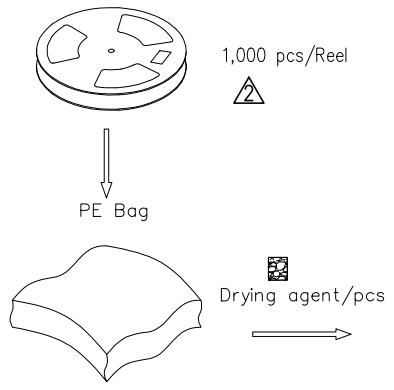
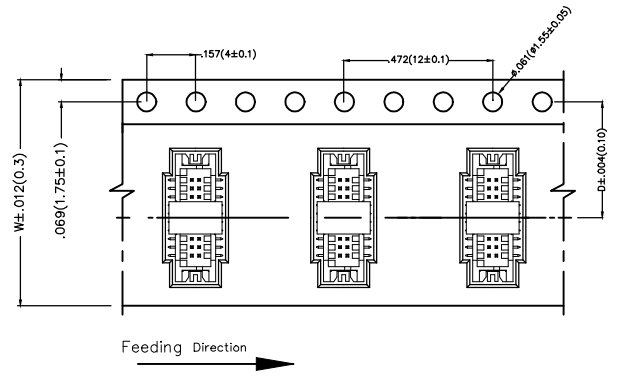
REV	LOCATIONS	DESCRIPTION	DATE	REVISER	APPD



- Note:
- 10 sprocket hole cumulative tolerance ±0.2
 - Carrier camber is within 1.0mm in 100mm
 - Material: White Conductive polystyrene Alloy 100% recyclable
 - All dimensions meet EIA-481-3 requirements
 - Component load per 13" reel: 1,000 pcs



Circuits (n)	Dimensions(in/mm)	
	D	W
10	.453(11.50)	.945(24.00)
20	.559(14.20)	1.260(32.00)
30	.795(20.20)	1.732(44.00)
40	.795(20.20)	1.732(44.00)



 THIRD ANGLE PROJECTION	GENERAL TOLERANCES (UNLESS SPECIFIED)		APPROVE BY	DATE	PART NO.	ITEM NO.	 Leader Of Industry	
	X.±.012(0.30)	X.±5'	FRANK	8/JUL/13	FWF12511-DXXS14W5M	FWF12511		
	DESIGN UNITS Inch (metric)	X.X±.008(0.20)	.X'±2'	CHECKED BY	DATE	TITLE		REV 2 SHEET NO. 2/2
	SCALE	X.XX±.006(0.15)	.XX'±1'	JACOB	8/JUL/13	Wire to Board (Wafer) Pitch 1.25mm 180° Vertical (SMT)		
SIZE	X.XXX±.004(0.10)	.XXX'±0.5'	DRAWN BY	DATE	THIS DRAWING CONTAINS INFORMATION THAT IS PROPRIETARY TO TXGA INDUSTRIAL ELECTRONICS(S.Z)CO.,LTD AND SHOULD NOT BE USED WITHOUT WRITTEN PERMISSION			
5:1	A4		CHERRY	8/JUL/13				