

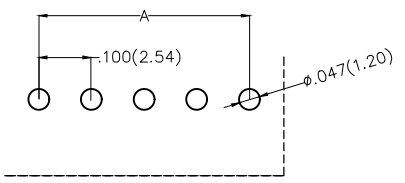
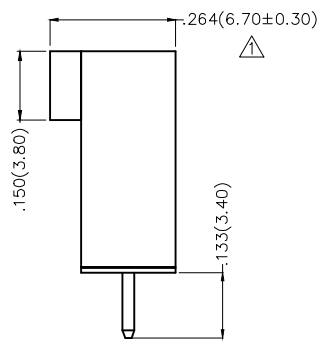
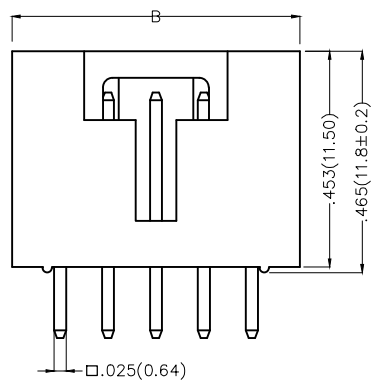
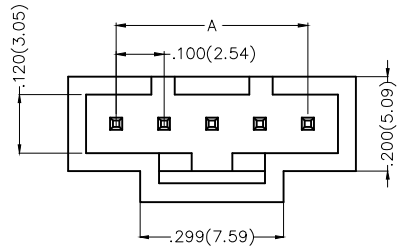
REV	LOCATIONS	DESCRIPTION	DATE	REVISER	APPD
1	△	Dimension: Change 6.80±0.25 into 6.70±0.30mm	05/JUN/17	KATE	CHERRY

**Electrical**

Current Rating: 2.5A AC(rms)/DC  
Voltage Rating: 250V AC(rms)/DC  
Contact Resistance: 20 mΩ Max  
Insulation Resistance: 1000 MΩ MIN  
Withstanding Voltage: 800V AC r.m.s  
Temperature Range-Operating: -25°C ~ +85°C

**Material and Plating**  
Housing: PBT UL94V-0  
Pin: Brass  
Plating: Gold plated

Circuits (n)	Part No.	Dimensions(in/mm)	
		A	B
2	FWF25404-S02S12K6B	.100(2.54)	.299(7.59)
3	FWF25404-S03S12K6B	.200(5.08)	.399(10.13)
4	FWF25404-S04S12K6B	.300(7.62)	.499(12.67)
5	FWF25404-S05S12K6B	.400(10.16)	.599(15.21)
6	FWF25404-S06S12K6B	.500(12.70)	.699(17.75)
7	FWF25404-S07S12K6B	.600(15.24)	.799(20.29)
8	FWF25404-S08S12K6B	.700(17.78)	.899(22.83)
9	FWF25404-S09S12K6B	.800(20.32)	.999(25.37)
10	FWF25404-S10S12K6B	.900(22.86)	1.099(27.91)
11	FWF25404-S11S12K6B	1.000(25.40)	1.199(30.45)
12	FWF25404-S12S12K6B	1.100(27.94)	1.299(32.99)



Recommended P.C.Board Layout

**Ordering Information**

FWF 254 04 - S XX S 1 2 K6 B  
1 2 3 4 5 6 7 8 9 10

1	Category FWF-Wafer	2	Series Number 254-Pitch2.54mm	3	Distinction No. 04	4	Row Option S-Single Row	5	Circuits XX
6	Entry Angle S-180° Vertical	7	Finish 1-Gold plated	8	Material-Resin 2-PBT	9	Color-Resin K6-Black	10	Packaging B-PE Bag

 THIRD ANGLE PROJECTION	GENERAL TOLERANCES (UNLESS SPECIFIED)		APPROVE BY FRANK	DATE 8/JUL/13	PART NO. FWF25404-SXXS12K6B	ITEM NO. FWF25404	 Leader Of Industry	
	DESIGN UNITS Inch (metric)	X.±.012(0.30) X.X±.008(0.20)	X'±5" .X'±2"	CHECKED BY JACOB	DATE 8/JUL/13	TITLE Wire to Board (Wafer) Pitch 2.54mm 180° Vertical (DIP)		REV 1
SCALE 5:1	SIZE A4	X.XX±.006(0.15) X.XXX±.004(0.10)	.XX'±1" .XXX'±0.5'	DRAWN BY CHERRY	DATE 8/JUL/13	THIS DRAWING CONTAINS INFORMATION THAT IS PROPRIETARY TO TXGA INDUSTRIAL ELECTRONICS(S.Z)CO.,LTD AND SHOULD NOT BE USED WITHOUT WRITTEN PERMISSION		