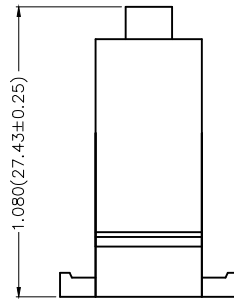
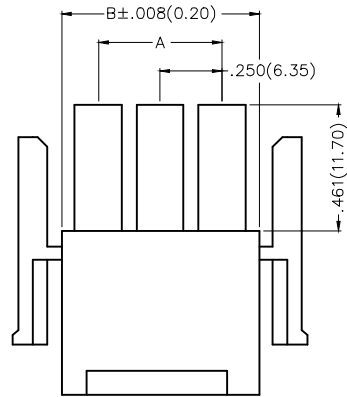
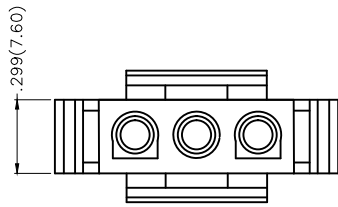


REV	LOCATIONS	DESCRIPTION	DATE	REVISOR	APPD

Electrical  
 Temperature Range—Operating: -25°C~+85°C  
 Material  
 Housing: PA66( UL 94V-0)  
 Applicable Terminal: FT63502-F2H  
 Mates With: FWF63501Series.



Circuits (n)	Part No.	Dimensions(in/mm)	
		A	B
2	FHG63501-S02M2TB	.250(6.35)	.551(14.00)
3	FHG63501-S03M2TB	.500(12.70)	.799(20.30)
4	FHG63501-S04M2TB	.744(19.05)	1.051(26.70)
5	FHG63501-S05M2TB	1.000(25.40)	1.301(33.05)

### Ordering Information

FHG 635 01 — S XX M 2 I B  
 1 2 3 4 5 6 7 8 9

1	Category FHG—Housing	2	Series Number 635—Pitch6.35mm	3	Distinction No. 01	4	Row Option Single Row	5	Circuits XX
6	Entry Type M—Male	7	Material—Resin 2—PA66	8	Color—Resin T—Transparent	9	Packaging B—PE Bag		

 THIRD ANGLE PROJECTION	GENERAL TOLERANCES (UNLESS SPECIFIED)		APPROVE BY FRANK	DATE 18/JUN/13	PART NO. FHG63501-SXXM2TB	ITEM NO. FHG63501	 Leader Of Industry	
	DESIGN UNITS Inch (metric)	X.±.012(0.30) X.X±.008(0.20)	X.±5' .X'±2'	CHECKED BY JACOB	DATE 18/JUN/13	TITLE Wire to Board Pitch 6.35mm(Housing)		REV 0
SCALE 5:1	SIZE A4	X.XX±.006(0.15) X.XXX±.004(0.10)	.XX'±1' .XXX'±0.5'	DRAWN BY CHERRY	DATE 18/JUN/13	THIS DRAWING CONTAINS INFORMATION THAT IS PROPRIETARY TO TXGA INDUSTRIAL ELECTRONICS(S.Z.)CO.,LTD AND SHOULD NOT BE USED WITHOUT WRITTEN PERMISSION		