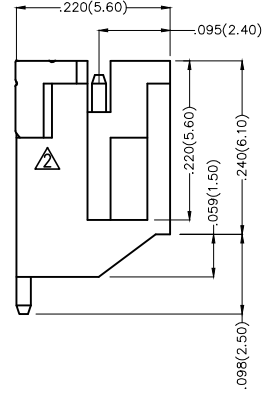
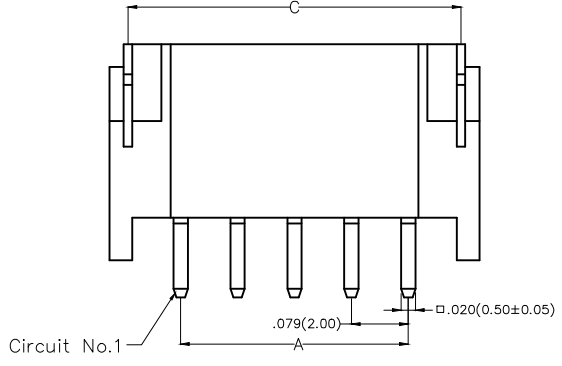
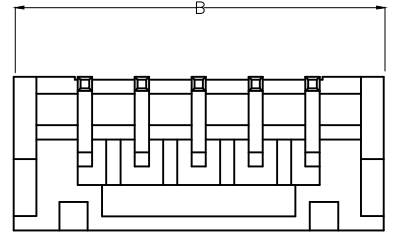


REV	LOCATIONS	DESCRIPTION	DATE	REVISER	APPD
1	△	MPQ 1500Pcs/Reel Change into 1000Pcs/Reel	20150921	CHERRY	FAN
2	△	Structure optimization	16/JUL/18	KATE	FRANK



Electrical
 Current Rating: 2.0A AC(rms)/DC
 Voltage Rating: 100V AC(rms)/DC
 Contact Resistance: 10 mΩ Max
 Insulation Resistance: 1000 MΩ MIN
 Withstanding Voltage: 800V AC r.m.s
 Temperature Range-Operating: -25°C~+85°C

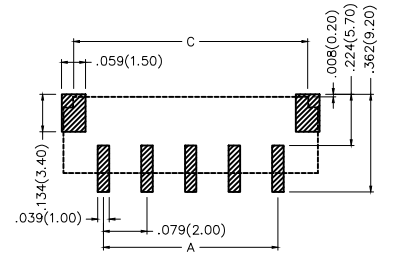
Material and Plating
 Housing: PA9T(UL 94V-0)
 Contact Pin: Brass/ Tin plated
 Solder Tab: Copper alloy/ Tin plated




Ordering Information

FWF 200 04 - S XX B 2 4 W5 M
 1 2 3 4 5 6 7 8 9 10

1	Category FWF-Wafer	2	Series Number 200-Pitch 2.0mm	3	Distinction No. 04	4	Row Option S-Single Row	5	Circuits XX	6	Entry Angle B-90° Angle
7	Plating 2-Tin Plated	8	Material-Resin 4-PA9T	9	Color-Resin W5-White	10	Packaging M-Reel				





Recommended P.C.Board Layout

THIRD ANGLE PROJECTION		GENERAL TOLERANCES (UNLESS SPECIFIED)		APPROVE BY	DATE	PART NO.	ITEM NO.	 Leader Of Industry	
DESIGN UNITS Inch (metric)	SCALE 5:1	X.±.012(0.30)	.X'±5'	FRANK	18/JUN/13	FWF20004-SXXB24W5M	FWF20004		
	SIZE A4	X.XX±.008(0.20)	.X'±2'	CHECKED BY JACOB	DATE 18/JUN/13	THIS DRAWING CONTAINS INFORMATION THAT IS PROPRIETARY TO TXGA INDUSTRIAL ELECTRONICS(S.Z)CO.,LTD AND SHOULD NOT BE USED WITHOUT WRITTEN PERMISSION		REV 2	SHEET NO. 1/3
		X.XX±.006(0.15)	.XX'±1'	DRAWN BY CHERRY	DATE 18/JUN/13				
		X.XXX±.004(0.10)	.XXX'±0.5'						

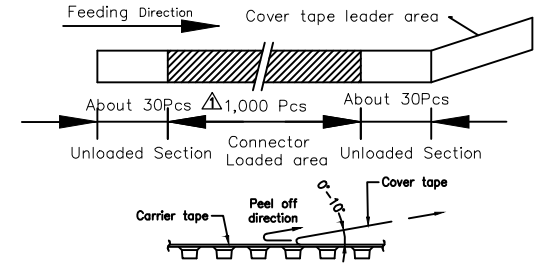
REV	LOCATIONS	DESCRIPTION	DATE	REVISER	APPD
1	△	MPQ 1500Pcs/Reel Change into 1000Pcs/Reel	20150921	CHERRY	FAN
2	△	Structure optimization	16/JUL/18	KATE	FRANK

Circuits (n)	Part No.	Dimensions(in/mm)		
		A	B	C
2	FWF20004-S02B24W5M	.079(2.00)	.315(8.00)	.268(6.80)
3	FWF20004-S03B24W5M	.157(4.00)	.394(10.00)	.346(8.80)
4	FWF20004-S04B24W5M	.236(6.00)	.472(12.00)	.425(10.80)
5	FWF20004-S05B24W5M	.315(8.00)	.551(14.00)	.504(12.80)
6	FWF20004-S06B24W5M	.394(10.00)	.630(16.00)	.583(14.80)
7	FWF20004-S07B24W5M	.472(12.00)	.709(18.00)	.661(16.80)
8	FWF20004-S08B24W5M	.551(14.00)	.787(20.00)	.740(18.80)
9	FWF20004-S09B24W5M	.630(16.00)	.866(22.00)	.819(20.80)
10	FWF20004-S10B24W5M	.709(18.00)	.945(24.00)	.898(22.80)
11	FWF20004-S11B24W5M	.787(20.00)	1.024(26.00)	.976(24.80)
12	FWF20004-S12B24W5M	.866(22.00)	1.102(28.00)	1.055(26.80)
13	FWF20004-S13B24W5M	.945(24.00)	1.181(30.00)	1.134(28.80)
14	FWF20004-S14B24W5M	1.024(26.00)	1.260(32.00)	1.213(30.80)
15	FWF20004-S15B24W5M	1.102(28.00)	1.339(34.00)	1.291(32.80)
16	FWF20004-S16B24W5M	1.181(30.00)	1.417(36.00)	1.370(34.80)

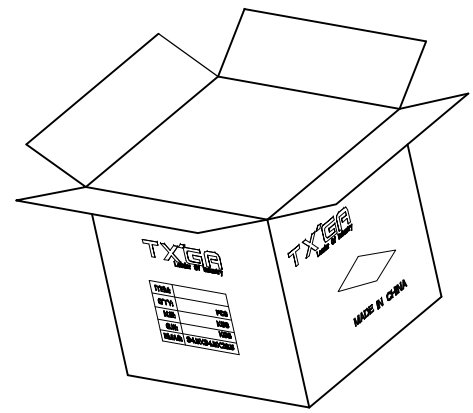
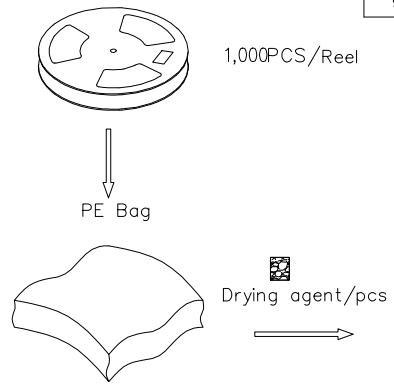
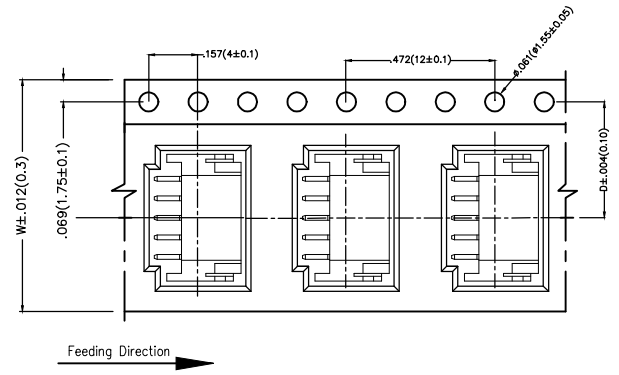
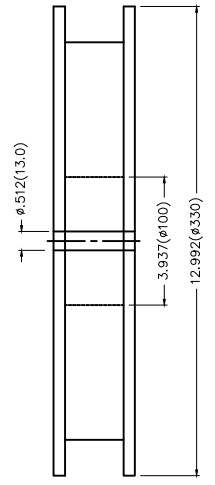
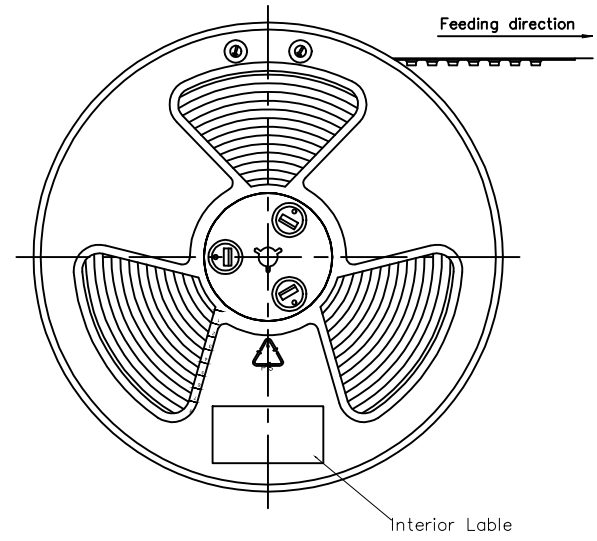
 THIRD ANGLE PROJECTION	GENERAL TOLERANCES (UNLESS SPECIFIED)		APPROVE BY FRANK	DATE 18/JUN/13	PART NO. FWF20004-SXXB24W5M	ITEM NO. FWF20004	 Leader Of Industry	
	DESIGN UNITS Inch (metric)	X.±.012(0.30)	.X'±5'	CHECKED BY JACOB	DATE 18/JUN/13	TITLE Wire to Board (Wafer) Pitch 2.0mm 90° Angled (SMT)		REV 2
SCALE 5:1	SIZE A4	X.XX±.006(0.15)	.XX'±1'	DRAWN BY CHERRY	DATE 18/JUN/13	THIS DRAWING CONTAINS INFORMATION THAT IS PROPRIETARY TO TXGA INDUSTRIAL ELECTRONICS(S.Z)CO.,LTD AND SHOULD NOT BE USED WITHOUT WRITTEN PERMISSION		

REV	LOCATIONS	DESCRIPTION	DATE	REVISER	APPD
1	△	MPQ 1500Pcs/Reel Change into 1000Pcs/Reel	20150921	CHERRY	FAN
2	△	Structure optimization	16/JUL/18	KATE	FRANK

- Note:
- 10 sprocket hole cumulative tolerance±0.2
 - Carrier camber is within 1.0mm in 100mm
 - Material: White Conductive polystyrene Alloy 100% recyclable
 - All dimensions meet EIA-481-3 requirements
 - Component load per 13" reel: 1,000pcs



Circuits (n)	Dimensions(in/mm)		Circuits (n)	Dimensions(in/mm)	
	D	W		D	W
2	.295(7.50)	.630(16.00)	10	.559(14.20)	1.260(32.00)
3	.295(7.50)	.630(16.00)	11	.795(20.20)	1.732(44.00)
4	.453(11.50)	.945(24.00)	12	.795(20.20)	1.732(44.00)
5	.453(11.50)	.945(24.00)	13	.795(20.20)	1.732(44.00)
6	.453(11.50)	.945(24.00)	14	.795(20.20)	1.732(44.00)
7	.559(14.20)	1.260(32.00)	15	.795(20.20)	1.732(44.00)
8	.559(14.20)	1.260(32.00)	16	.795(20.20)	1.732(44.00)
9	.559(14.20)	1.260(32.00)			



 THIRD ANGLE PROJECTION	GENERAL TOLERANCES (UNLESS SPECIFIED)		APPROVE BY	DATE	PART NO.	ITEM NO.	 Leader Of Industry	
	X.±.012(0.30)	X.'±5'	FRANK	18/JUN/13	FWF20004-SXXB24W5M	FWF20004		
	DESIGN UNITS Inch (metric)	X.X±.008(0.20)	X'±2'	CHECKED BY	DATE	TITLE		REV 2 SHEET NO. 3/3
	SCALE	X.XX±.006(0.15)	.XX'±1'	JACOB	18/JUN/13	Wire to Board (Wafer) Pitch 2.0mm 90° Angled (SMT)		
SIZE	X.XXX±.004(0.10)	.XXX'±0.5'	DRAWN BY	DATE	THIS DRAWING CONTAINS INFORMATION THAT IS PROPRIETARY TO TXGA INDUSTRIAL ELECTRONICS(S.Z)CO.,LTD AND SHOULD NOT BE USED WITHOUT WRITTEN PERMISSION			
5:1	A4		CHERRY	18/JUN/13				