

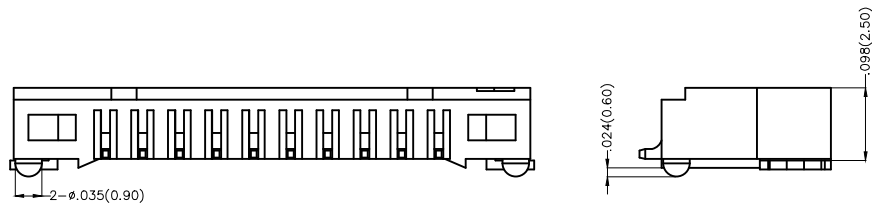
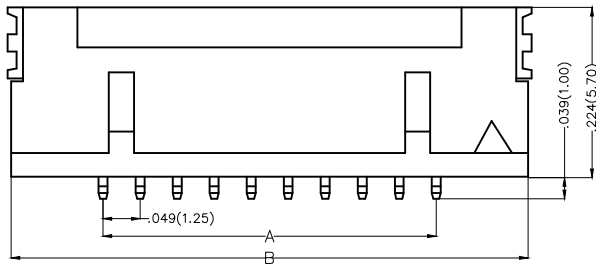
REV	LOCATIONS	DESCRIPTION	DATE	REVISER	APPD
1		MPQ: Change 1,000 pcs into 1,500 pcs / reel	24/FEB/20	KATE	CHERRY

Electrical

Current Rating: 1.0A AC(rms)/DC
Voltage Rating: 150V AC(rms)/DC
Contact Resistance: 30 m Ω Max
Insulation Resistance: 500 M Ω MIN
Withstanding Voltage: 500V AC r.m.s
Temperature Range-Operating: -25°C~+85°C

Material and Plating

Housing: PA9T(UL 94V-0)
Contact Pin: Brass
Plating: Full tin

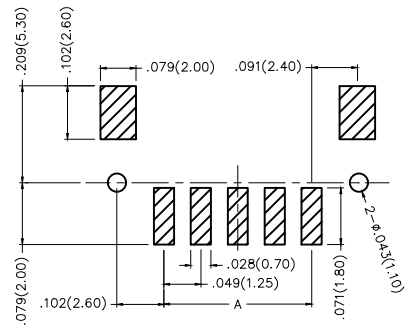


Material and Plating : Housing PA9T UL94V-0, Tin-Plated all.			
Circuits (n)	Part No.	Dimensions(in/mm)	
		A	B
20	FWF12508-S20B24W5M	.935(23.75)	1.179(29.95)
30	FWF12508-S30B24W5M	1.427(36.25)	1.671(42.45)

Ordering Information

FWF 125 08 - S XX B X 4 W5 M
1 2 3 4 5 6 7 8 9 10

1 Category FWF-Wafer	2 Series Number 125-Pitch1.25mm	3 Distinction No. 08	4 Row Option Single Row	5 Circuits XX	6 Entry Angle B-90° Angle
7 Plating 2-Tin Plated	8 Material-Resin 4-PA9T	9 Color-Resin W5-White	10 Packaging M-Reel		

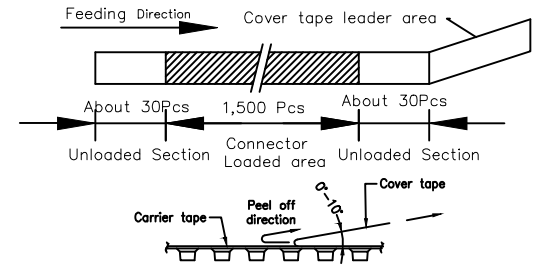
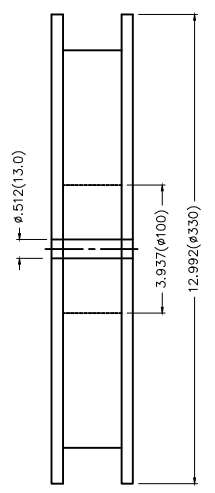
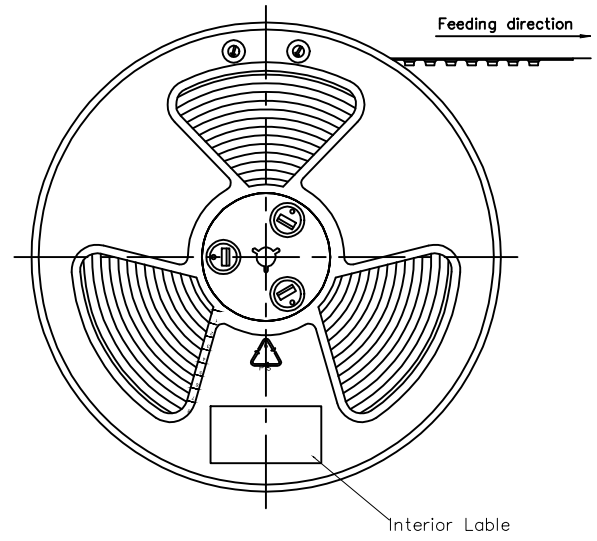


Recommended P.C.Board Layout

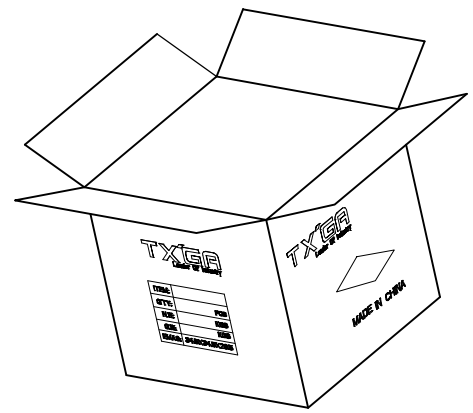
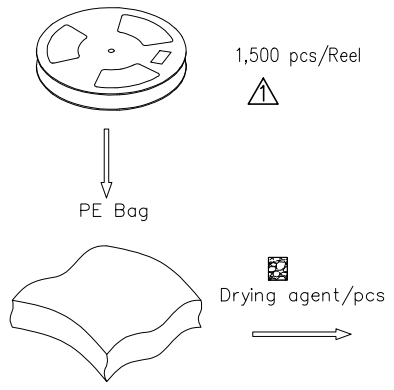
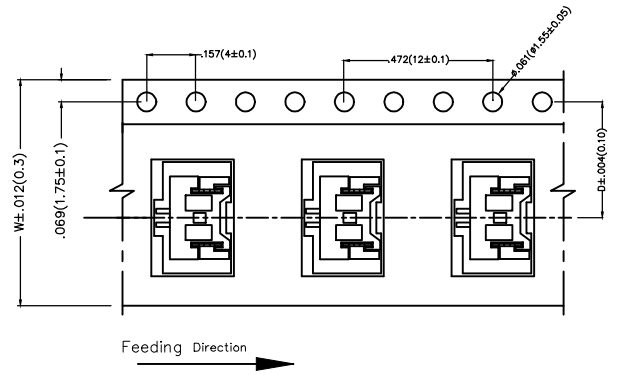
 THIRD ANGLE PROJECTION	GENERAL TOLERANCES (UNLESS SPECIFIED)		APPROVE BY FRANK	DATE 8/JUL/13	PART NO. FWF12508-SXXBX4W5M	ITEM NO. FWF12508	 TXGA Leader Of Industry	
	DESIGN UNITS Inch (metric)	X.±.012(0.30) X.X±.008(0.20)	X.±5° .X±2°	CHECKED BY JACOB	DATE 8/JUL/13	TITLE Wire to Board (Wafer) Pitch 1.25mm 90° Angle (SMT)		REV 1
SCALE 5:1	SIZE A4	X.XX±.006(0.15) X.XXX±.004(0.10)	.XX±1° .XXX±0.5°	DRAWN BY CHERRY	DATE 8/JUL/13	THIS DRAWING CONTAINS INFORMATION THAT IS PROPRIETARY TO TXGA INDUSTRIAL ELECTRONICS(S.Z)CO.,LTD AND SHOULD NOT BE USED WITHOUT WRITTEN PERMISSION		

REV	LOCATIONS	DESCRIPTION	DATE	REVISED	APPD

- Note:
- 10 sprocket hole cumulative tolerance ± 0.2
 - Carrier camber is within 1.0mm in 100mm
 - Material: White Conductive polystyrene Alloy 100% recyclable
 - All dimensions meet EIA-481-3 requirements
 - Component load per 13" reel: 1,500 pcs



Circuits (n)	Dimensions(in/mm)	
	D	W
20	.559(14.20)	1.260(32.00)
30	.795(20.20)	1.732(44.00)



 THIRD ANGLE PROJECTION	GENERAL TOLERANCES (UNLESS SPECIFIED)		APPROVE BY	DATE	PART NO.	ITEM NO.	 Leader Of Industry		
	X.±.012(0.30)	X.±5'	FRANK	8/JUL/13	FWF12508-SXXBX4W5M	FWF12508			
	DESIGN UNITS	X.X±.008(0.20)	.X'±2'	CHECKED BY	DATE	TITLE		REV 1	SHEET NO. 2/2
	Inch (metric)	X.XX±.006(0.15)	.XX'±1'	JACOB	8/JUL/13	Wire to Board (Wafer) Pitch 1.25mm 90° Angle (SMT)			
SCALE	SIZE	X.XXX±.004(0.10)	.XXX'±0.5'	DRAWN BY	DATE	THIS DRAWING CONTAINS INFORMATION THAT IS PROPRIETARY TO TXGA INDUSTRIAL ELECTRONICS(S.Z)CO.,LTD AND SHOULD NOT BE USED WITHOUT WRITTEN PERMISSION			
5:1	A4			CHERRY	8/JUL/13				