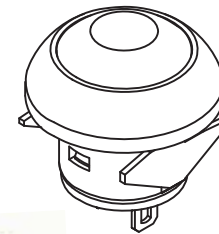
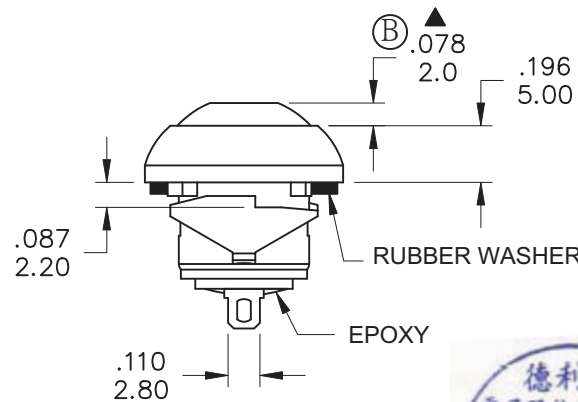
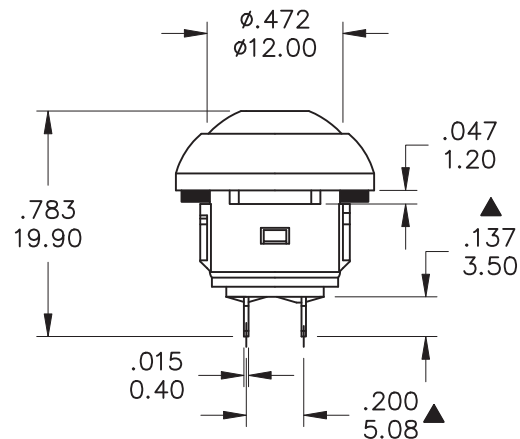
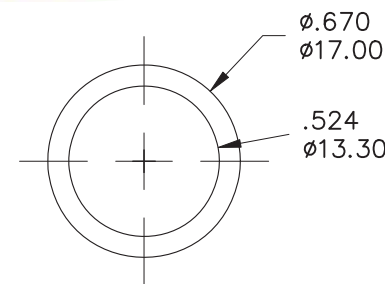
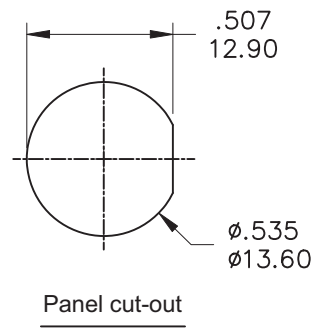
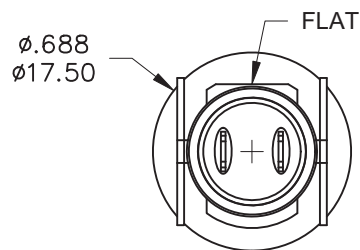


本公司智慧財產，未經同意不得複製
DAILYWELL copyright, may not be used
without permission from DAILYWELL

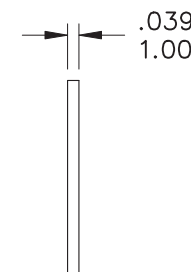


Model No.	POS.1	POS.2
PAS6	OFF	MOM
Term. Comm.	OPEN	SHORT
SCHEMATIC		

SWITCH FUNCTION



RUBBER WASHER x1



X=CAP COLOR	
1	White
2	Black
3	Red
4	Orange
5	Yellow
6	Green
7	Blue
8	Brown
9	Gray

SPECIFICATIONS

Max. current/voltage rating with resistive load:
400mA 32VAC - 100 mA 50VDC - 125 mA 125VAC.
INITIAL CONTACT RESISTANCE: 50 mΩ max.
INSULATION RESISTANCE: 1 GΩ min. at 500VDC.
DIELECTRIC STRENGTH: 1,000 VAC rms.
ELECTRICAL LIFE AT FULL LOAD: 500,000 cycles.
PANEL THICKNESS: 0.8 mm (.031) min. -1.8 mm (.071) max.
TOTAL TRAVEL: 1.5 mm(.059).
OPERATING FORCE: 2N~5N.
CONTACT BOUNCE: 10 ms.
MECHANICAL LIFE: 1,000,000 cycles.
SOLDERING: 350°C max. for 5 seconds.

MATERIALS

CASE: Diallyl phthalate (DAP)(UL94v-0).
CAP: Polyamide 6/6.
BUSHING: Polyamide 6/6.
TERMINAL/CONTACTS: Gold(2μ") over silver(10μ") plated.
RoHS & Lead Free



德利威電子股份有限公司
DAILYWELL ELECTRONICS CO.,LTD.

	符號	原尺寸	修改後尺寸	變更日期	SCALE (比例): 3:2 TOLERANCE (公差): 0.00 mm ± 0.25mm 0.0 mm ± 0.40mm ANGULAR: ± 5° FILE NAME: PASP0034	TITLE 圖名	Sub - Miniature Pushbutton Switches		SIZE 圖紙	A4	
1	Ⓐ		增加端子電鍍規格	MAY-22-2009		DWG NO. 圖號	PAS6B1M1CES43-5		UNIT 單位	inch mm	
2	Ⓑ	2.00	2.0	MAR-12-2013		REV. 版本	C	DATE 日期	OCT - 15 - 2008	SHEET 張數	1 of 1
3	Ⓒ					CHECKED BY 審核	RICHARD		DRAWN BY 製圖	IRENE	
4	Ⓓ										
5	Ⓔ										