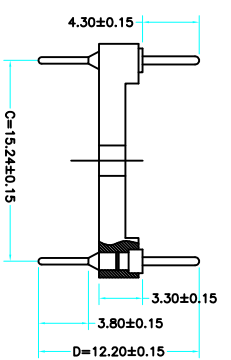
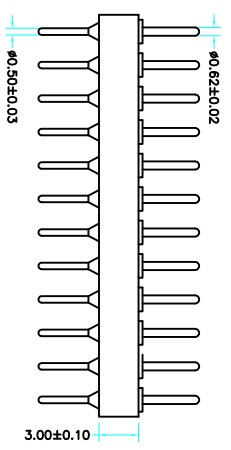
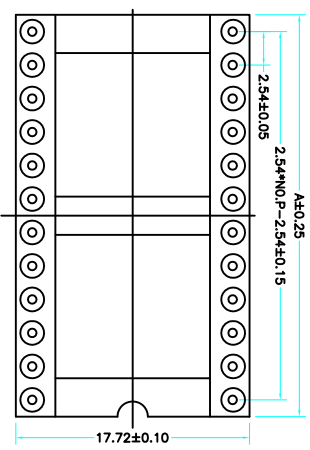
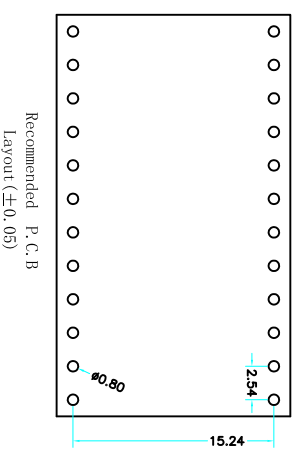


Technical Data
 Pin(outer sleeve):Brass,machined CuZn38Pb2
 Cllp(Contact 4 Flinger):Beryllium copper,heat teated
 Insulator:PBt UL94V-0 colour:black
 Tin Plated:2?m/80u"Ni,5um/200u"Sn
 Gold Plated:2um"/80u"Ni,GF
 Current rating:3Amps
 Contact resistance:max 10mΩ
 Dielectric strength:min 1000V RMS
 Operating temperature:-40°C to+105°C



Poles	Dimensions(mm)
2*02	5.08
2*03	7.62
2*04	10.16
2*05	12.70
2*06	15.24
2*07	17.78
2*08	20.32
2*09	22.86
2*10	25.40
2*12	30.48
2*14	35.56
2*16	40.64
2*20	50.80
2*21	53.34
2*24	60.96
2*25	63.50



X5621WV-2*XX-C1524D1220	PPS 94V-0	Brass	Tin Gold "u"	X5621F
PART NO	Material	Material(Terminal)	Finish(Terminal)	Mates With XKB Pin Header

- X5621W V-2*XX-C1524 D1220**
 ① ② ③ ④ ⑤ ⑥
- Series: NO.
 - Category : W-Water
 - Welding Board Angle : V-Straight 180°
 - Row No-Pin No:2*XX-03,04,05,06,07,08,09,10,12,14,16, 20,21,24,25
 - Plastic Height : C=15.24mm
 - Pin Length : D:1220=12.20mm;42=4.2mm;74=7.40mm; 7.43=7.43mm;92=9.20mm;1020=10.20mm;1120=11.20mm; 1150=11.50mm;1170=11.70;1390=13.90mm;1340=13.40mm 1370=13.70mm;1420=14.20mm;1520=15.20mm;1620-16.20mm 1780=17.80mm;1820=18.20mm

ΔX	ANGULAR	±5°	DSND	SCALE: N/A	MODEL TYPE:
ΔX	L ≤ 4	±0.2	DWN	VIEW:	PART NO.:
ΔX	4 < L ≤ 16	±0.3	CHKD	UNIT: mm	DWG NO.:
ΔX	16 < L ≤ 63	±0.4	APPD	SIZE: A4	X5621WV-2*XX-C1524D1220
MARK	L > 63	±0.5			WEIGHT SHEET REVISION

REVISIONS	DATE	REVISED	APPROVED	UNSPECIFIED TOLERANCES	DESCRIPTION

www.kk-dg.cn www.hellokk.com www.hellokk.com

XKB INDUSTRIAL PRECISION CO., LIMITED

1.0g 1/1 A0