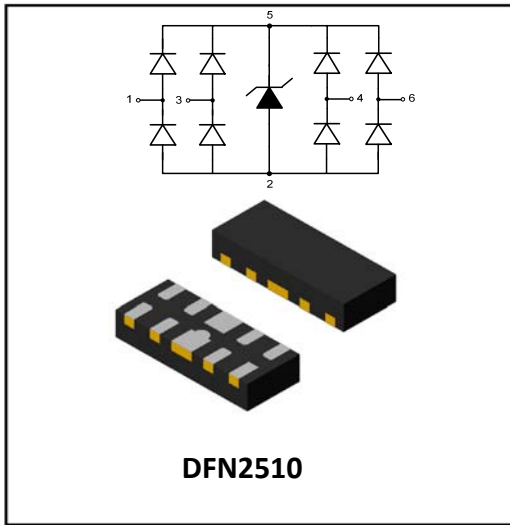


4-Line, Uni-directional, Ultra-low Capacitance, Transient Voltage Suppressor



Features

- 65W peak pulse power (8/20 μ s)
- Ultra low leakage
- Operating voltage: 3.3V
- Low clamping voltage
- Up to 4 lines protects
- RoHS Compliant

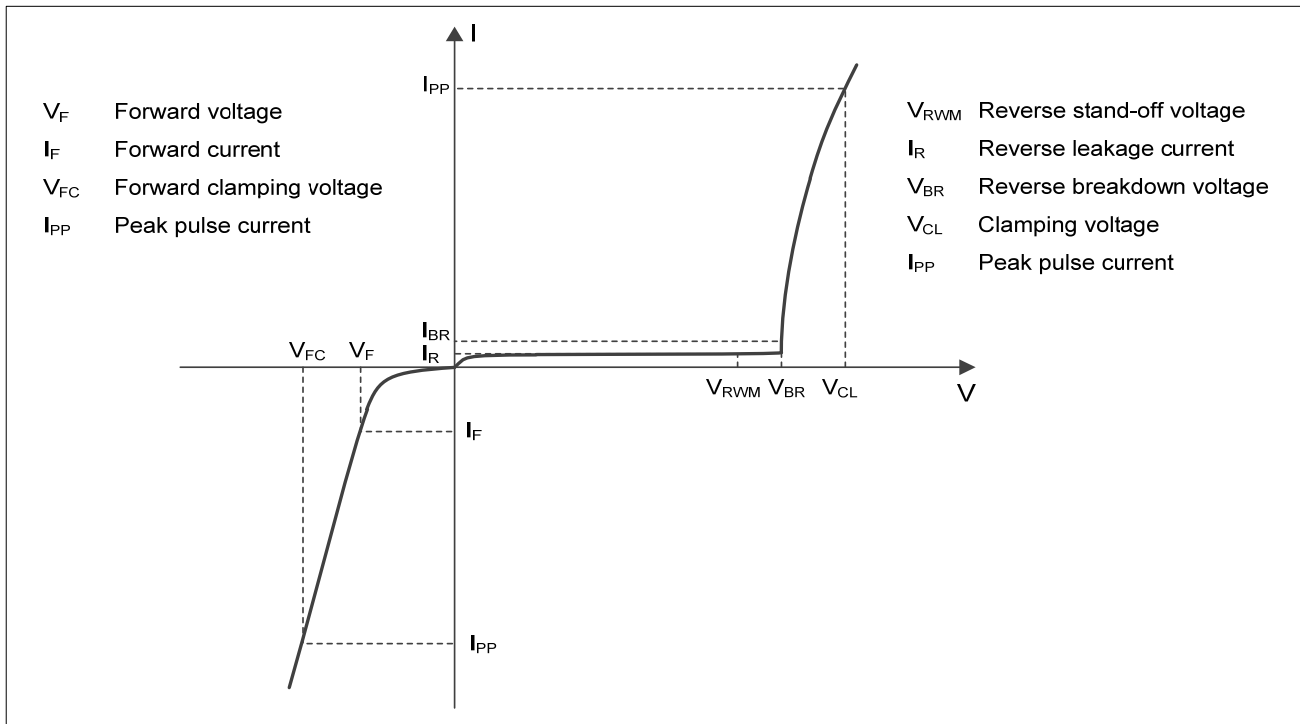
Mechanical Data

- Package: DFN2510-10 (2.5 \times 1.0 \times 0.5mm)
- Terminals: Tin plated leads, solderabl per J-STD-002 and JESD22-B102
- Polarity: Cathode line denotes the cathode end
- Marking:



3324P : Device Marking Code
Dot denotes Pin1

■ Definitions of electrical characteristics





■Maximum Ratings

PARAMETER	SYMBOL	LIMITS	UNIT
Peak pulse power ($t_p = 8/20\mu s$)	P_{pk}	65	W
Peak pulse current ($t_p = 8/20\mu s$)	I_{PP}	5	A
ESD according to IEC61000-4-2 air discharge	V_{ESD}	± 15	KV
ESD according to IEC61000-4-2 contact discharge		± 10	
Junction temperature	T_J	125	$^{\circ}C$
Operating temperature	T_{OP}	-40~85	$^{\circ}C$
Storage temperature	T_{STG}	-55~150	$^{\circ}C$

■Electrical Characteristics ($T_a=25^{\circ}C$ Unless otherwise specified)

PARAMETER	Symbol	UNIT	Conditions	Min	Typ	Max
Reverse maximum working voltage	V_{RWM}	V	Any I/O pin to ground			3.3
Reverse leakage current	I_R	μA	$V_{RWM} = 3.3V$, any I/O pin to ground			1.0
Reverse breakdown voltage	$V_{(BR)}$	V	$I_T = 1mA$, any I/O pin to ground	7	8	9
Clamping voltage ¹⁾	V_{CL}	V	$I_{PP} = 16A$, $t_p = 100ns$		16	
Clamping voltage ²⁾	V_{CL}	V	$V_{ESD} = 8kV$		16	
Clamping voltage ³⁾	V_{CL}	V	$I_{PP} = 1A$, $t_p = 8/20\mu s$			9
		V	$I_{PP} = 5A$, $t_p = 8/20\mu s$			13
Junction capacitance	CJ	μF	$V_R = 0V$, $f = 1MHz$ Any I/O pin to GND		0.5	0.65
			$V_R = 0V$, $f = 1MHz$ Between any I/O pin		0.25	0.4

Notes:

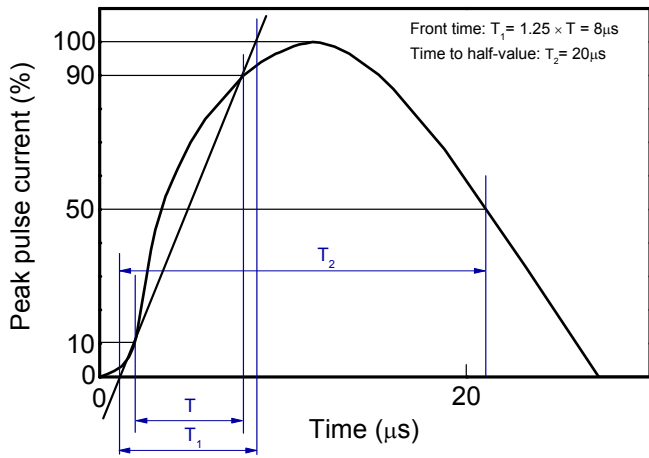
- 1) TLP parameter: $Z_0 = 50\Omega$, $t_p = 100ns$, $t_r = 2ns$, averaging window from 60ns to 80ns.
- 2) Contact discharge mode, according to IEC61000-4-2.
- 3) Non-repetitive current pulse, according to IEC61000-4-5.

■Ordering Information (Example)

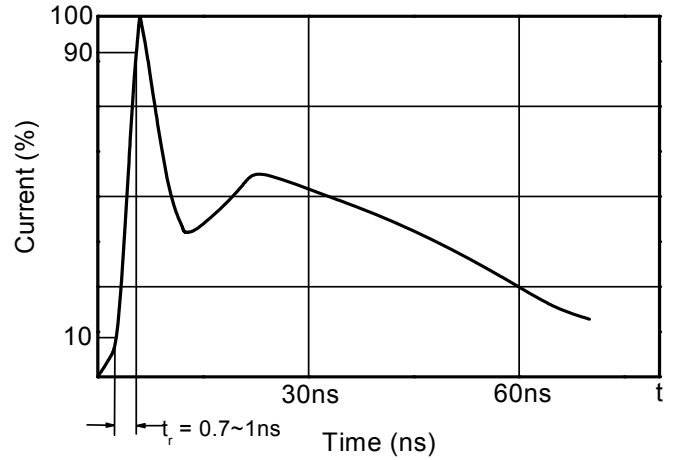
PREFERRED P/N	MINIMUM PACKAGE(pcs)	INNER BOX QUANTITY(pcs)	OUTER CARTON QUANTITY(pcs)	DELIVERY MODE
3324P	3000	30000	120000	7 reel

■ Characteristics (Typical)

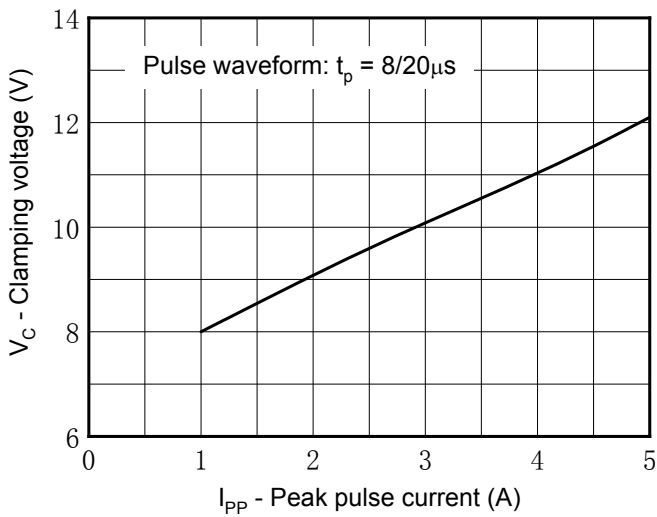
8/20μs waveform per IEC61000-4-5



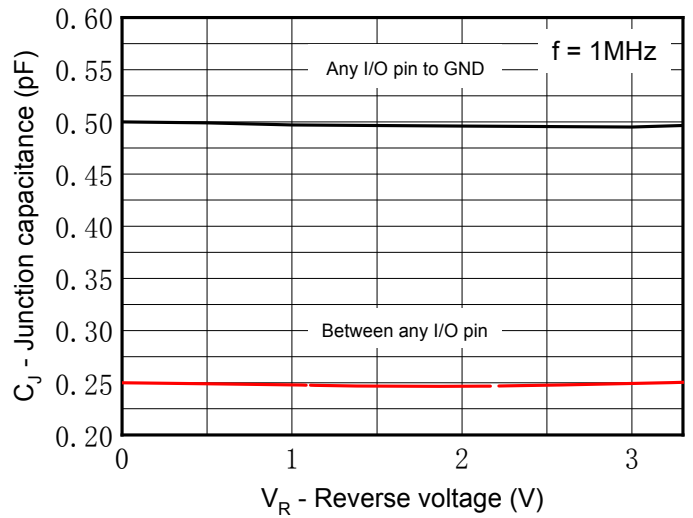
Contact discharge current waveform per IEC61000-4-2



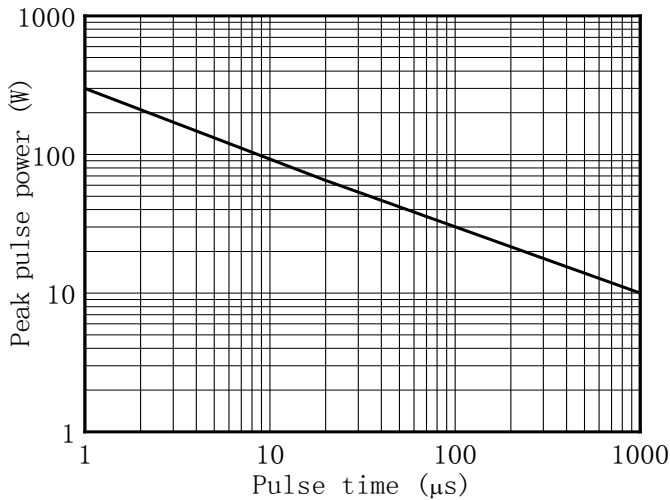
Clamping voltage vs. Peak pulse current



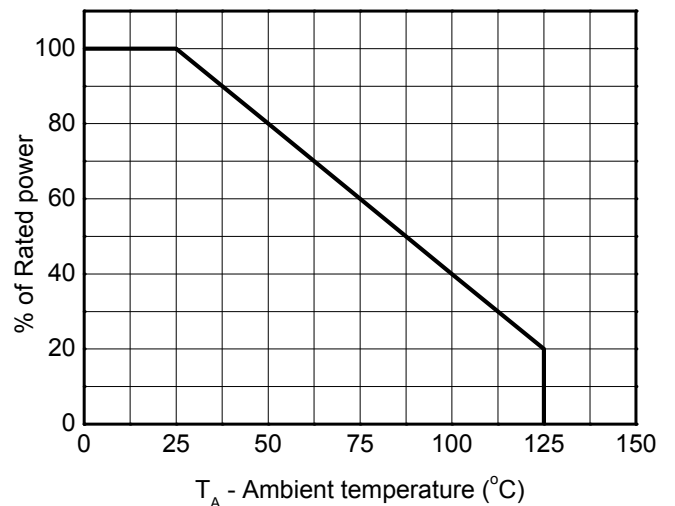
Capacitance vs. Reverse voltage



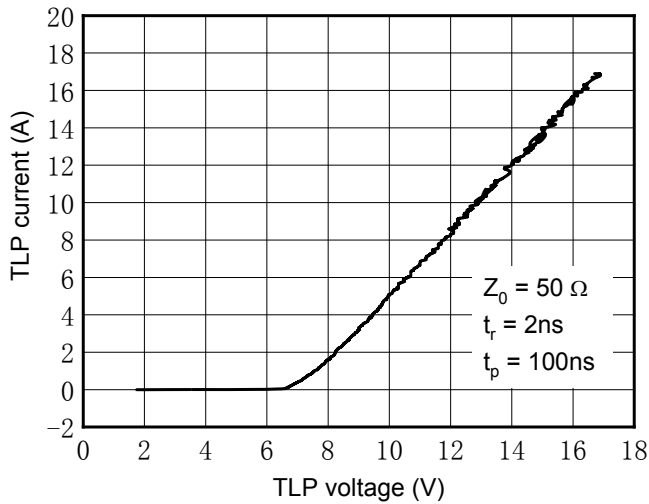
Non-repetitive peak pulse power vs. Pulse time



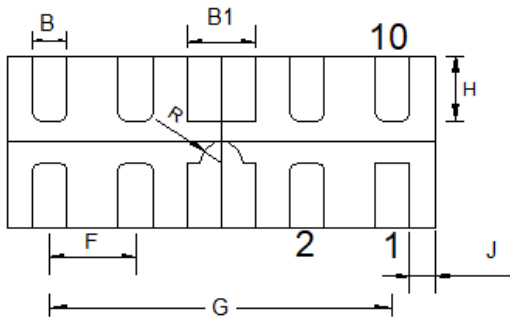
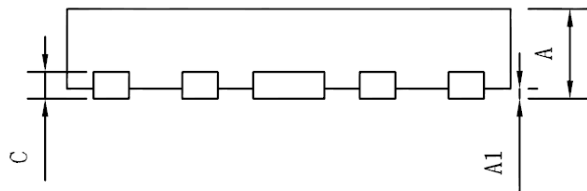
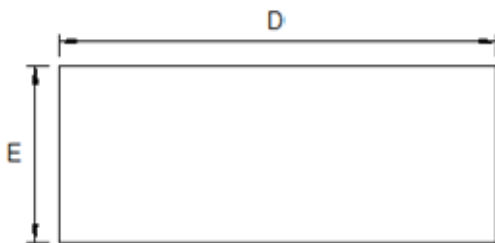
Power derating vs. Ambient temperature



TLP Measurement

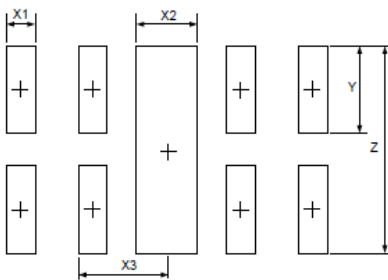


Outline Dimensions



SYMBOL	MILLIMETER		
	MIN	NOM	MAX
A	0.40	0.45	0.50
A1	--	0.02	0.05
B	0.15	0.20	0.25
B1	0.35	0.40	0.45
C	0.10	0.15	0.20
D	2.45	2.50	2.55
E	0.95	1.00	1.05
F	0.50 BSC		
G	2.00 BSC		
H	0.30	0.38	0.46
R	0.125 BSC		
J	0.10	0.15	0.20

Soldering Footprint



SYM	DIMENSIONS	
	MILLIMETERS	INCHES
X1	0.200	0.008
X2	0.400	0.016
X3	0.600	0.024
Y	0.600	0.024
Z	1.400	0.056

Notes:

This recommended land pattern is for reference purposes only. Please consult your manufacturing group to ensure your PCB design guidelines are met.



Disclaimer

The information presented in this document is for reference only. Yangzhou Yangjie Electronic Technology Co., Ltd. reserves the right to make changes without notice for the specification of the products displayed herein to improve reliability, function or design or otherwise.

The product listed herein is designed to be used with ordinary electronic equipment or devices, and not designed to be used with equipment or devices which require high level of reliability and the malfunction of which would directly endanger human life (such as medical instruments, transportation equipment, aerospace machinery, nuclear-reactor controllers, fuel controllers and other safety devices), Yangjie or anyone on its behalf, assumes no responsibility or liability for any damages resulting from such improper use of sale.

This publication supersedes & replaces all information previously supplied. For additional information, please visit our website [http:// www.21yangjie.com](http://www.21yangjie.com) , or consult your nearest Yangjie's sales office for further assistance.