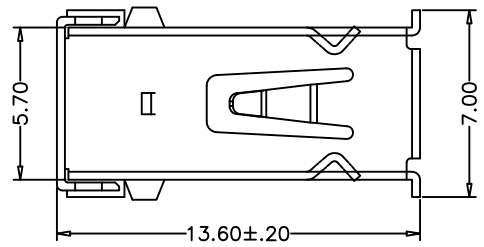
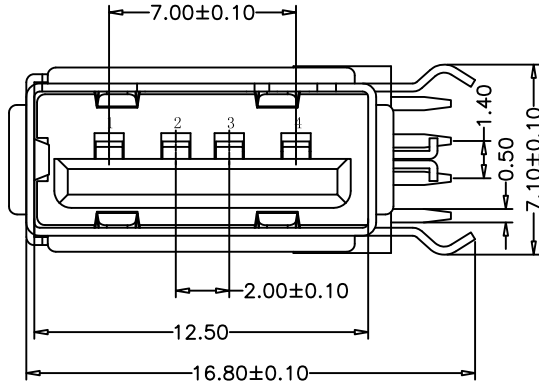
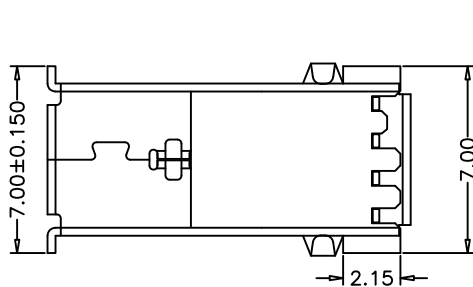
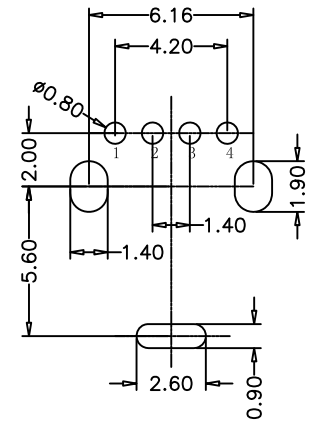
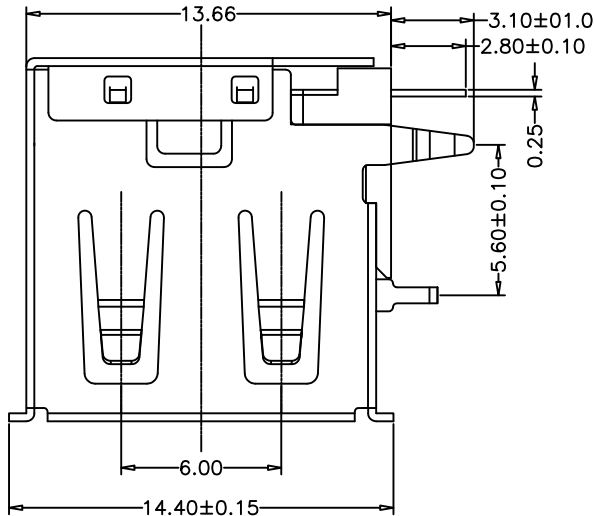


| | | |
|-----|--------------|------------|
| REV | MODIFICATION | DATE |
| A0 | 胶芯变更 | 2013.12.20 |



NOTE:

- Material:
 - Housing: Thermoplastics, UL94V-0 (ROHS, HF)
 - Contact: Phosphor Bronze C5191-EH/C2680-EH, T=0.25mm
 - Shell: COPPER ALLOY T=0.30mm
- FINISH:
 - Contact: 15u" Gold Plated on Contact Area, 80u" Min. Tin Plated on Solder Area, 50u" Min. Nickel Underplating Over All.
 - Shell: 50u" Min. Nickel Underplating Over All.
- Specification:
 - Rating:
 - Rated voltage 500V AC/DC. Rated current: 2 A Max.
 - Electrical:
 - Insulation Resistance (EIA-364-21): 1000Ω Min. at 500V/DC for 1Minute.
 - Contact Resistance (EIA-364-23): 30 mΩ Max. at 20mV Max, 50mA
 - Dielectric Withstanding Voltage (EIA-364-20): No discharge, flashover or breakdown at 500V/AC 1Minute
- Plug extraction force shall be between 1.0kgf and 2.00kgf
- Contact finish:
 - 01: Selective Gold Flash
 - 02: Selective Gold 3U"
 - 03: Selective Gold 5U"
 - 04: Selective Gold 15U"
 - 05: Selective Gold 30U"



RECOMMENDED PCB LAYOUT
GENERAL TOLERANCES: ±0.05

| | | | | | | | | | |
|-------------------------------------|-------|--------------|-------|---------------|------------|--------------------------|----------------------|-------------------------|----|
| 产品图 PRODUCT CHART DWG | | 深圳市精拓金电子有限公司 | | | | | | | |
| 公差一览表 TOLERANCE UNLESS OTHERWISE | | 单位 UNITS | MM | 制图 DRAWING | Z-Y-B | 制图料号 PRODUCT PART NO. | 906-252A1012D10200 | | |
| X | ±0.25 | X | ±5.° | 比例 SCALE | 1:1 | 审核 CHKD | 产品名称 PRODUCT NAME | AF13.65侧插短体三弯脚有边铜壳PBT白胶 | |
| .X | ±0.20 | .X | ±2.° | 日期 DATE | 2013.12.20 | 核准 APPD | 角法 VIEW | 版本 REV | A0 |
| .XX | ±0.15 | .XX | ±1.° | | | | | | |
| .XXX | ±0.10 | .XXX | ±0.5° | | | | | | |