

### GT-TC117X-HXXX-LX

G-SWITCH

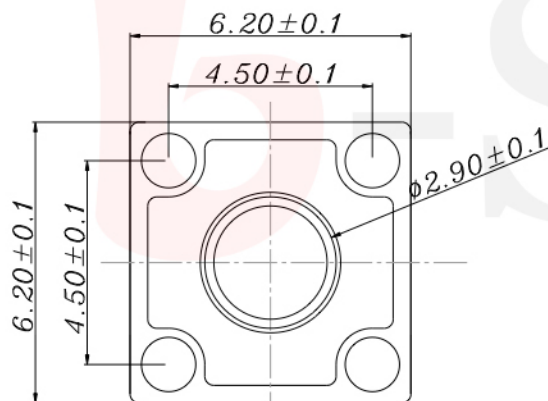
Operating Force

A=60gf  
B=70gf  
C=80gf

Switch Height (mm)  
H073=7.3mm

Switch lifetime (Force)

L10=1,000,000 Cycles  
L50=5,000,000 Cycles



### P.C.B LAND DIMENSION

#### G-Switch Specification:

Operating temperature range : -30°C to +85°C  
Rating : 50mA.12V DC  
Insulation resistance: : 100MΩ min.100V DC  
Dielectric strength : 250V AC for 1 min  
Contact resistance: : 100m Ω max.  
Travel:0.20±0.1mm



CIRCUIT DIAGRAM



### G-Switch Electronic (HongKong) CO.,Ltd.

Unless otherwise specified, Tolerance:  
X. ±0.30  
X.x ±0.20  
X.xx ±0.15  
X.xxx ±0.10  
Angles ±3°

DESIGN FengFengChen DATE 2019.05.29  
CHECKED DATE  
APPROVED DATE  
<http://www.dg-switch.com>  
TEL:0769-82388879

Molde code:  
GT-TC117X-HXXX-LX  
REV.: X1 SCALE: 4:1 UNIT: mm  
SIZE: A4 SHEET: 1/1