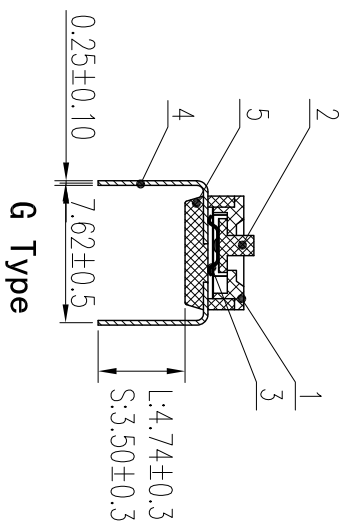
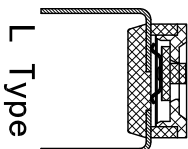
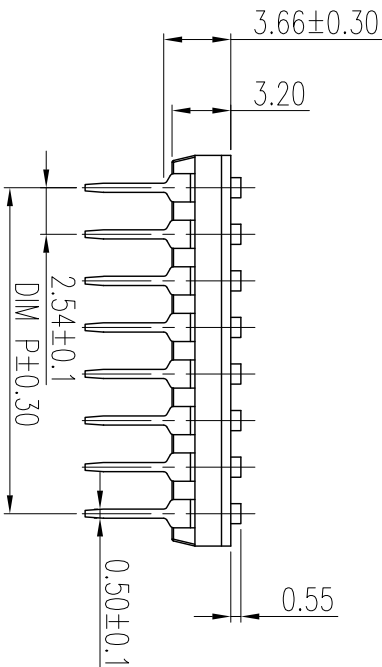
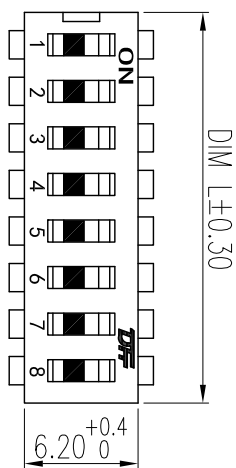
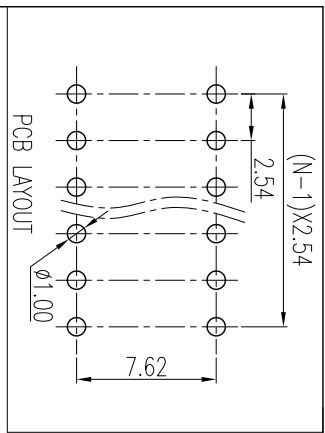
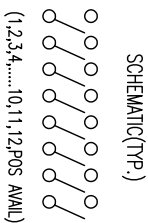
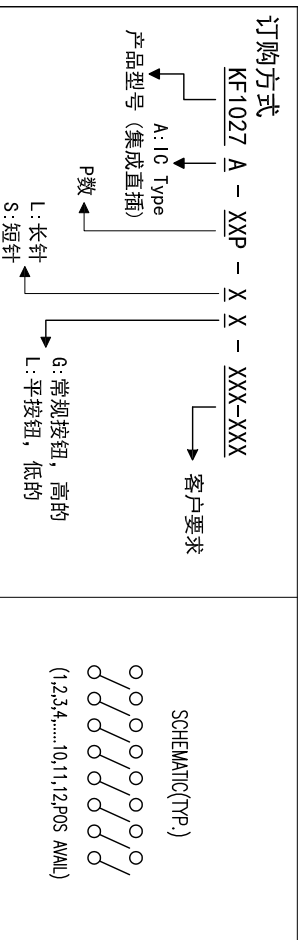


REV	ECN	CONTENT	CHECK	DATE
V0.0		初版发行	YZG	2017.03.12
V1.0		整理图纸	WL	2019.09.25



- 技术要求:
- 额定电流: 25mA, 24VDC (开与关切换时) 100mA, 50VDC (开与关不切换时)
 - 接触阻抗: $\leq 50m\Omega$ (初始), $\leq 100m\Omega$ (寿命测试后)
 - 绝缘电阻: $\geq 100M\Omega / 500VDC$
 - 耐电压: 500VAC/1minute
 - 拨动力: 1000g max
 - 拨动行程: 0.9mm
 - 机械寿命: ≥ 2000 cycles
 - 电气寿命: ≥ 2000 cycles/25mA, 24VDC
 - 使用温度: $-40^\circ C \sim +85^\circ C$
 - 存储温度: $-40^\circ C \sim +85^\circ C$
 - 符合RoHS要求

焊接说明:
 波峰焊接: 250 ±10°C, 5S max
 手工焊接: 30W电烙铁, 320 ±5°C, 3S max
 焊接前保持开关在“OFF”状态



General tolerance in mm		radii and chamfers		shorter angle side		—		//	
over	0 to	over	0.5 to	over	10 to	over	0 to	over	100 to
±0.15	±0.2	±0.25	±0.3	±0.5	±0.8	±0.2	±0.5	±1.0	±1°

订购方式

KF1027 A - XXP - X - XXX-XXX

客户要求

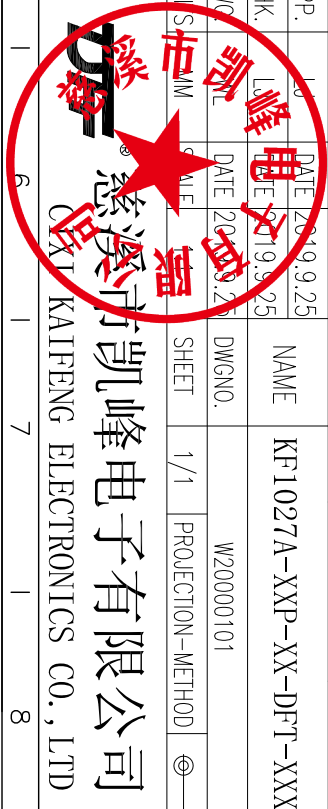
L: 长针
S: 短针
G: 常规按钮, 高的
L: 平按钮, 低的

over	0 to	over	3 to	over	6 to	over	30 to	over	120 to	over	4.00 to	over	4.00 to	over	1000 to	over	3 to	over	6 to	over	10 to	over	50 to	over	120 to	over	0.5 to	over	100 to	over	150 to	over	0.5 to
±0.15	±0.2	±0.25	±0.3	±0.5	±0.8	±0.2	±0.5	±1.0	±1°	±30°	±20°	0.5	0.2	0.3	0.5	0.5	0.5	0.5	0.5	0.5	0.5	0.5	0.5	0.5	0.5	0.5	0.5	0.5	0.5	0.5	0.5	0.5	0.5

Poles	Dim P	Dim L
1P	—	3.54
2P	2.54	6.08
3P	5.08	8.62
4P	7.62	11.16
5P	10.16	13.70
6P	12.70	16.24
7P	15.24	18.78
8P	17.78	21.32
9P	20.32	23.86
10P	22.86	26.40
11P	25.40	28.94
12P	27.94	31.48

5	底座	\	1	工程塑料	UI94V-0
4	PIN针	\	2P	铜合金	镀金
3	弹片	\	P	铜合金	触点镀金
2	拨柄	\	P	工程塑料	UL94V-0
1	盖板	\	1	工程塑料	UL94V-0

APP.	DATE	2019.9.25	NAME	KF1027A-XXP-XX-DFT-XXX
CHK.	DATE	2019.9.25	DWGNO.	W20000101
DWG	DATE	2019.9.25	SHEET	1/1
UN	DATE	2019.9.25	PROJECTION-METHOD	◎



凯峰电子有限公司
KAIFENG ELECTRONICS CO., LTD