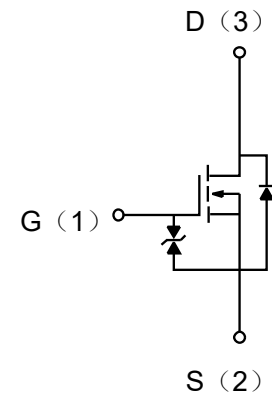


**Description**

PNM523T30V01 is designed for high speed switching applications

The enhancement mode MOS is extremely high density cell and low on-resistance.

MOSFET Product Summary			
$V_{DS}(V)$	$R_{DS(on)}(\Omega)$	$V_{GS(th)}(V)$	$I_D(A)$
30	7@ $V_{GS}=2.5V, I_D=10mA$	0.5 to 1.5	0.1


**Electrical characteristics per line@25°C ( unless otherwise specified)**

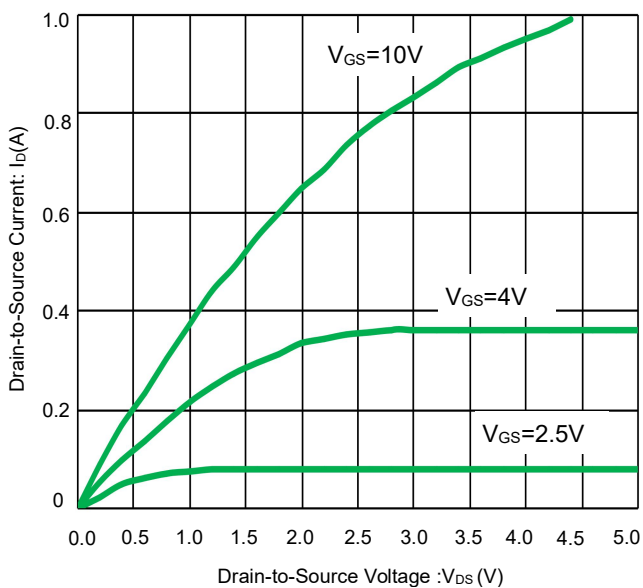
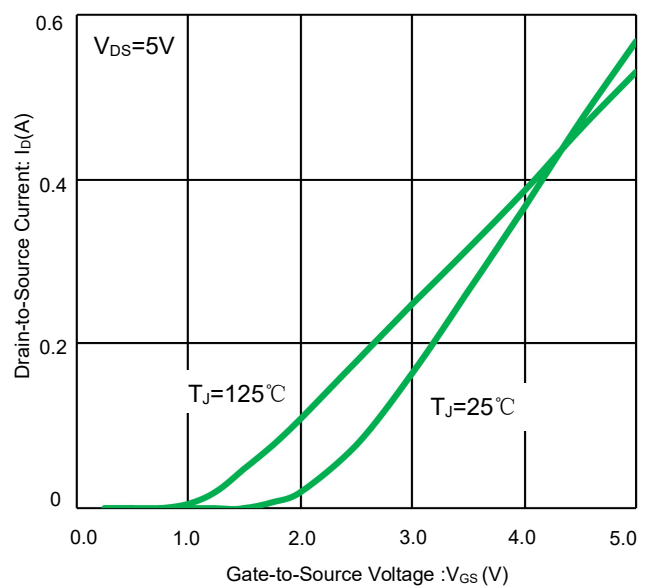
Parameter	Symbol	Conditions	Min.	Typ.	Max.	Units
<b>OFF CHARACTERISTICS</b>						
Drain-Source Breakdown Voltage	$V_{DSS}$	$I_D = 10\mu A, V_{GS} = 0V$	30	-	-	V
Zero Gate Voltage Drain Current	$I_{DSS}$	$V_{DS} = 30V, V_{GS} = 0V$	-	-	1	$\mu A$
Gate-Body Leakage Current	$I_{GSS}$	$V_{DS} = 0V, V_{GS} = \pm 20V$	-	-	$\pm 1$	$\mu A$
Gate Threshold Voltage	$V_{GS(th)}$	$V_{DS} = V_{GS}, I_D = 250\mu A$	0.5	-	1.5	V
Static Drain-Source On-Resistance	$R_{DS(on)}$	$V_{GS} = 2.5V, I_D = 1mA$		6.5	9	$\Omega$
		$V_{GS} = 2.5V, I_D = 10mA$		7	9	$\Omega$
		$V_{GS} = 4V, I_D = 10mA$	-	4	6	$\Omega$
		$V_{GS} = 10V, I_D = 100mA$	-	3	5	$\Omega$
Forward Transconductance	$g_{FS}$	$V_{DS} = 5V, I_D = 0.1A$	-	0.2	-	S
Source-Drain Diode Forward Voltage	$V_{FSD} (V)$	$I_D = 100mA, V_{GS} = 0V$		0.75	1	V
<b>DYNAMIC PARAMETERS</b>						
Input Capacitance	$C_{ISS}$	$V_{GS} = 0V, V_{DS} = 25V,$ $f = 1MHz$	-	-	40	pF
Output Capacitance	$C_{OSS}$		-	-	10	pF
Reverse Transfer Capacitance	$C_{RSS}$		-	-	5	pF

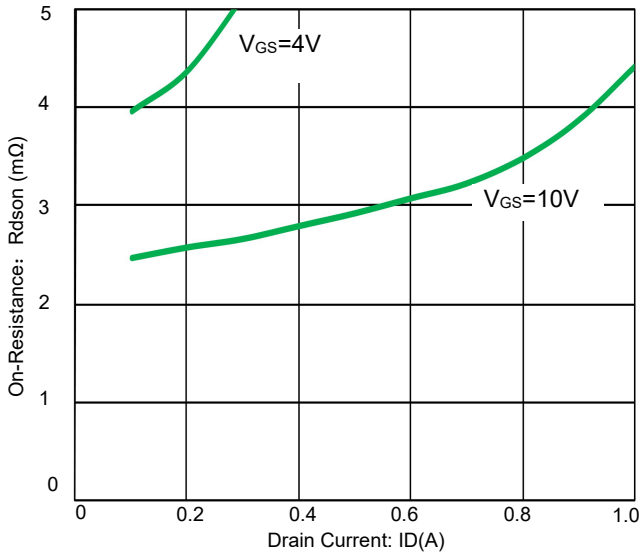
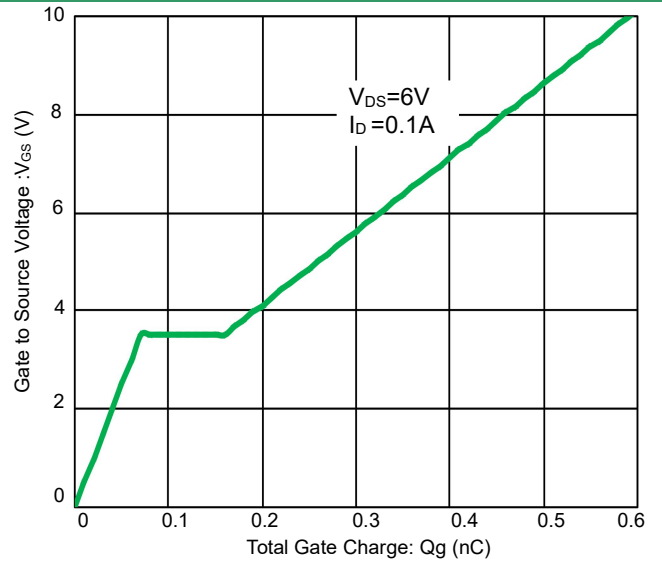
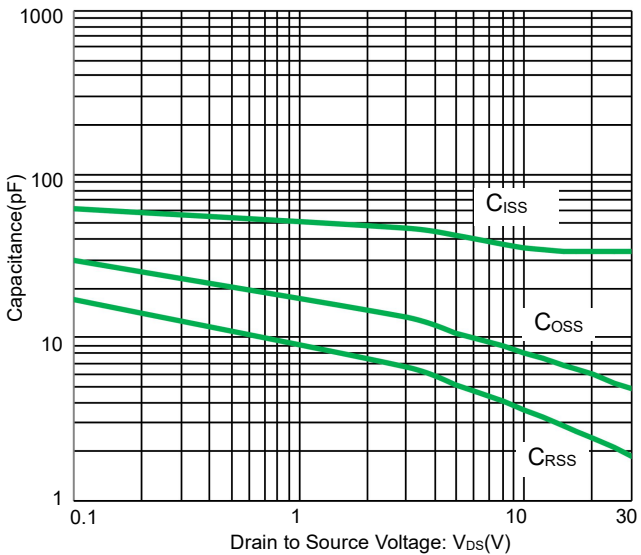
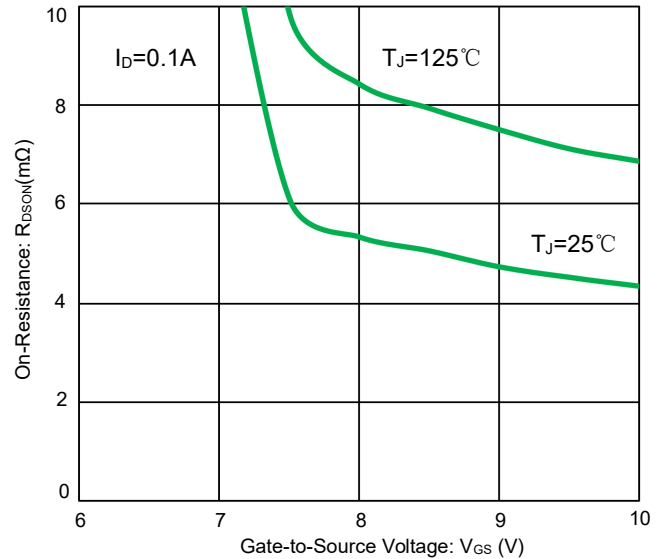
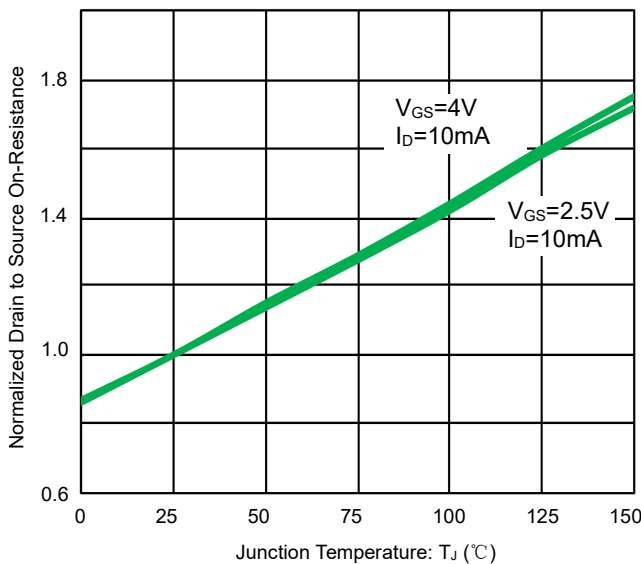
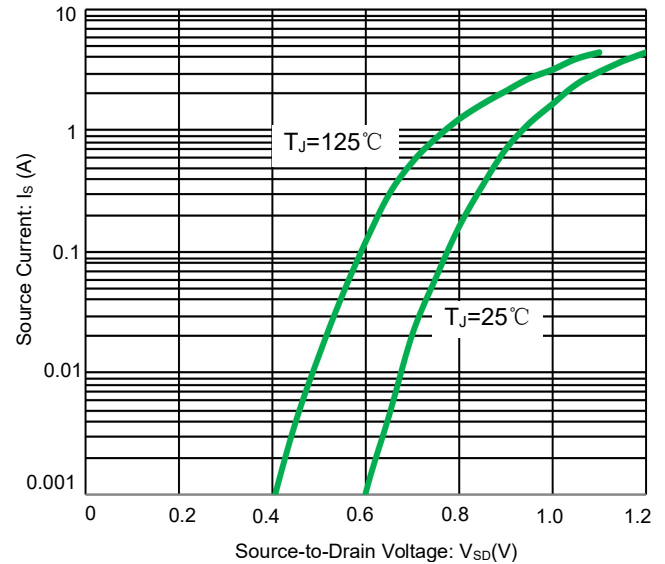
**Electrical characteristics per line@25°C ( unless otherwise specified)**

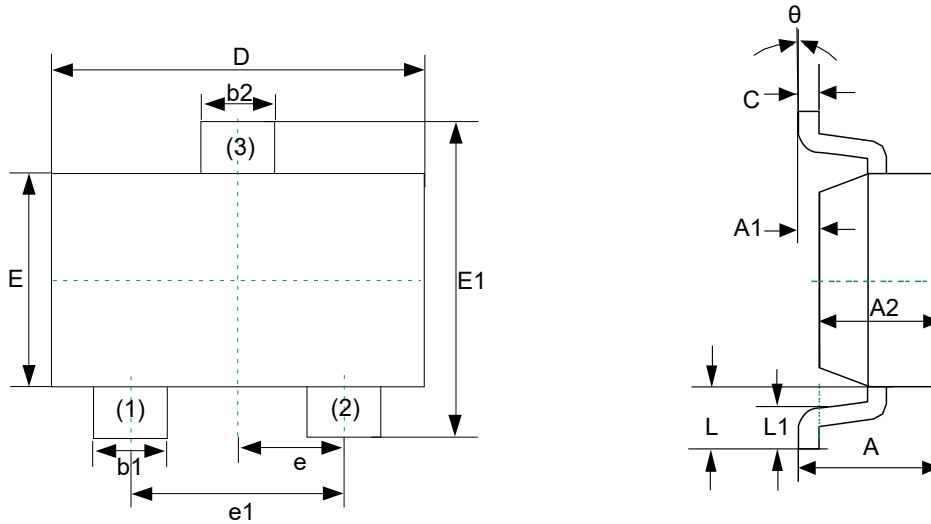
Parameter	Symbol	Conditions	Min.	Typ.	Max.	Units
<b>SWITCHING PARAMETERS</b>						
Total Gate Charge	Qg	$V_{GS}=4.5V, V_{DS}=6V,$ $I_D=0.1A$			0.5	nC
Gate-Source Charge	Qgs				0.2	nC
Gate-Drain Charge	Qgd				0.2	nC
Turn-On Delay Time	$t_{d(on)}$	$V_{DS}=30V, V_{GS}=10V,$ $R_G=25\Omega, R_L=150\Omega, I_D=0.1A$	-	3		ns
Turn-On Rise Time	$t_r$		-	3.5		ns
Turn-Off Delay Time	$t_{d(off)}$		-	5		ns
Turn-On Fall Time	$t_f$		-	2.5		ns

**Absolute maximum rating@25°C**

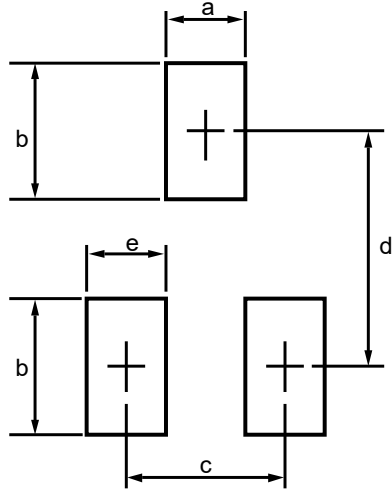
Rating	Symbol	Value	Units	
Drain-Source Voltage	$V_{DS}$	30	V	
Gate-Source Voltage	$V_{GS}$	$\pm 20$	V	
Drain Current	Continuous	$I_D$	0.10	A
	Pulsed	$I_D$	0.36	A
Total Power Dissipation	$T_A=25^\circ C$	$P_D$	150	mW

**Typical Characteristics**

**Fig 1. On-Region Characteristics**

**Fig 2. Transfer Characteristics**

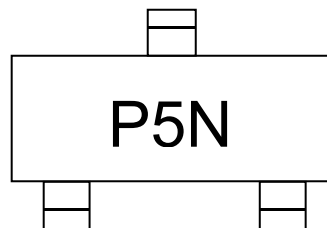

**Fig 3. On-Resistance v.s. Drain Current and Gate Voltage**

**Fig 4. Gate Charge Characteristics**

**Fig 5. Capacitance Characteristic**

**Fig 6. On-Resistance vs. Gate-to-Source Voltage**

**Fig 7. Normalized On-Resistance vs. Junction Temperature**

**Fig 8. Body diode forward voltage**

**Product dimension (SOT-523)**


Dim	Millimeters		Inches	
	MIN	MAX	MIN	MAX
A	0.700	0.900	0.028	0.035
A1	0.000	0.100	0.000	0.004
A2	0.700	0.800	0.028	0.031
b1	0.150	0.250	0.006	0.010
b2	0.250	0.350	0.010	0.014
c	0.100	0.200	0.004	0.008
D	1.500	1.700	0.059	0.067
E	0.700	0.900	0.028	0.035
E1	1.450	1.750	0.057	0.069
e	0.500TYP		0.020TYP	
e1	0.900	1.100	0.035	0.043
L	0.400REF		0.016REF	
L1	0.260	0.460	0.010	0.018
$\theta$	0°	8°	0°	8°


**Product dimension (SOT-523)**


Dim	Millimeters	
	MIN	MAX
a	--	0.5
b	--	0.6
c	--	1.0
d	--	1.24
e	--	0.4

**Suggested PCB Layout**
**Marking information**

**Ordering information**

Device	Package	Reel	Shipping
PNM523T30V01	SOT-523 (Pb-Free)	7"	3000 / Tape & Reel


**IMPORTANT NOTICE**

 and **Prisemi**<sup>®</sup> are registered trademarks of **Prisemi Electronics Co., Ltd (Prisemi)** ,Prisemi reserves the right to make changes without further notice to any products herein. Prisemi makes no warranty, representation or guarantee regarding the suitability of its products for any particular purpose, nor does Prisemi assume any liability arising out of the application or use of any product or circuit, and specifically disclaims any and all liability, including without limitation special, consequential or incidental damages. “Typical” parameters which may be provided in Prisemi data sheets and/or specifications can and do vary in different applications and actual performance may vary over time. All operating parameters, including “Typicals” must be validated for each customer application by customer’s technical experts. Prisemi does not convey any license under its patent rights nor the rights of others. The products listed in this document are designed to be used with ordinary electronic equipment or devices, Should you intend to use these products with equipment or devices which require an extremely high level of reliability and the malfunction of with would directly endanger human life (such as medical instruments, aerospace machinery, nuclear-reactor controllers, fuel controllers and other safety devices), please be sure to consult with our sales representative in advance.

Website: <http://www.prisemi.com>

For additional information, please contact your local Sales Representative.

©Copyright 2009, Prisemi Electronics

 **Prisemi**<sup>®</sup> is a registered trademark of Prisemi Electronics.

All rights are reserved.