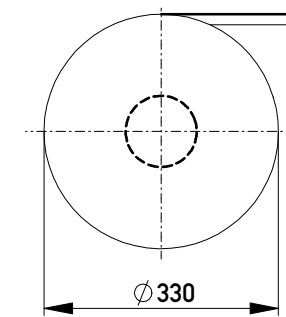
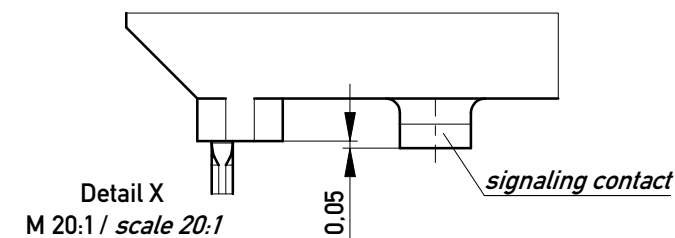
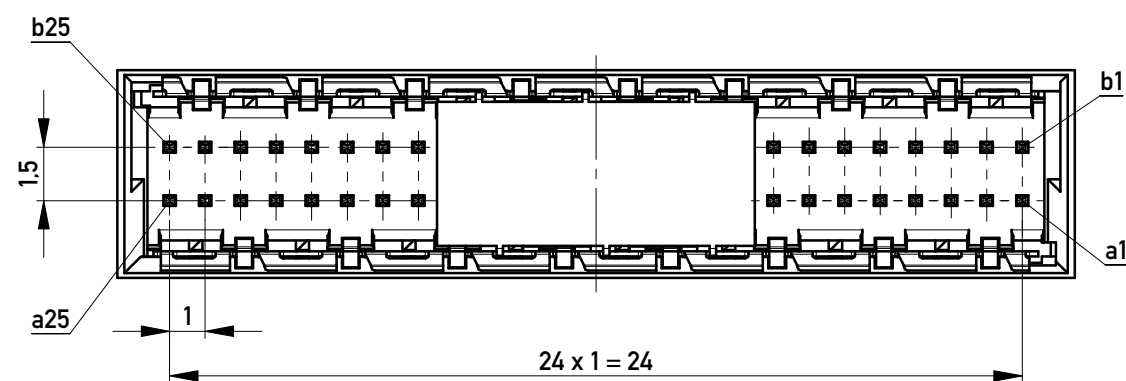
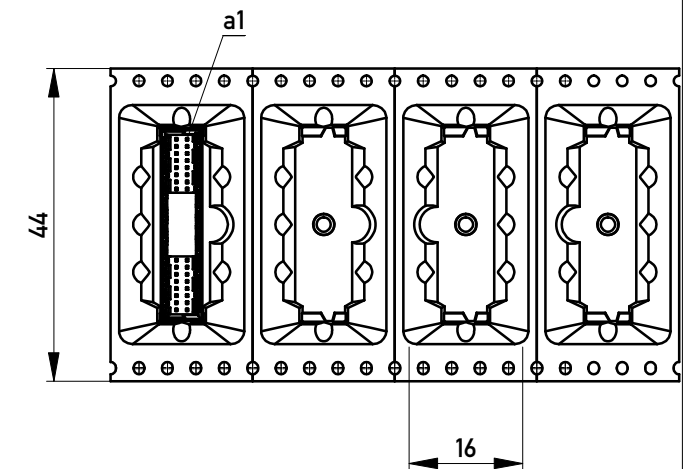


Verpackt im Gurt in Anlehnung an DIN IEC 60286-3  
 tape on reel packaging according to DIN IEC 60286-3  
 Verpackungseinheit: 220 Stück  
 packaging unit: 220 pcs



Abspulrichtung - Reel off Direction →



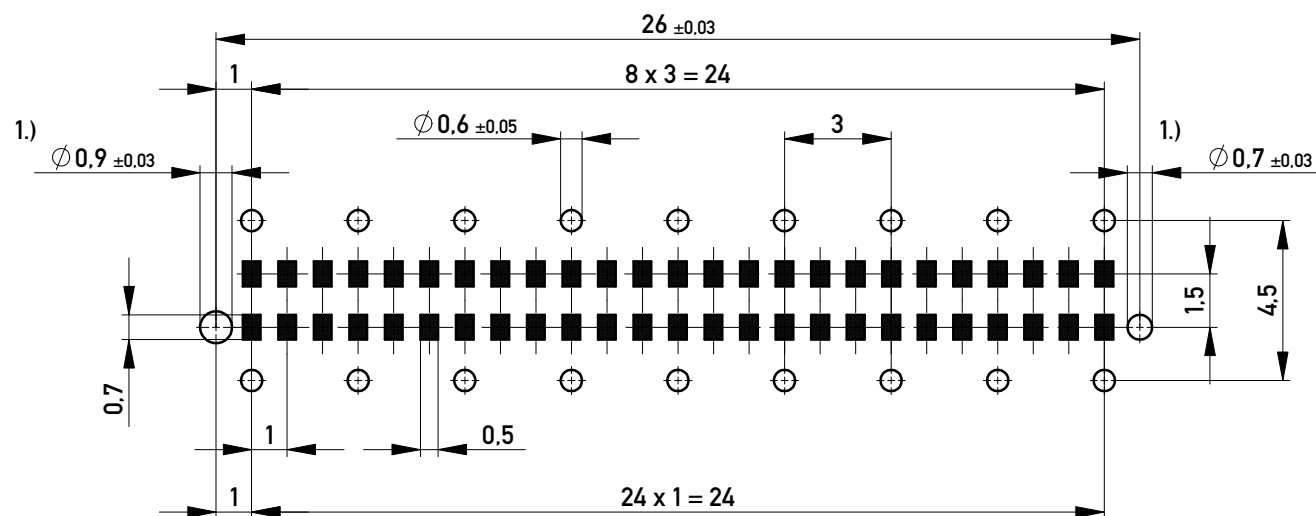
Anforderungsstufe 1  
 Performance Level 1

Kontaktbereich vergoldet  
 Mating Area gold plating

Anschlussbereich verzinkt 4-6 µm  
 Terminal Area 4-6 µm tin plating

Koplanarität der Anschlüsse ≤ 0,1 mm  
 Coplanarity Area of Termination ≤ 0,1 mm

Leiterplatten-Lay-out Vorschlag / PCP-Layout Proposal



1.) Durchmesser des Bohrers / Drill tool

Information:  All rights reserved. Only for Information. To ensure that this is the latest version of this drawing, please contact one of the ERNI companies before using.	Tolerances  All Dimensions in mm	Scale 5:1
	Designation <b>Messerleiste 9mm THR, 50 polig</b> <b>Male 9mm THR, 50 contacts</b>	
www.ERNI.com		<b>224560</b> I A3
k Index	21.07.2017 Date	Class MSPEED

Copyright by ERNI Production GmbH & Co. KG  
 Proprietary notice pursuant to ISO 16016 to be observed.