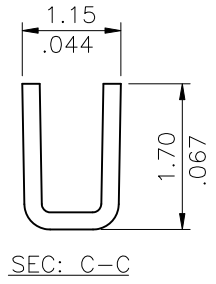
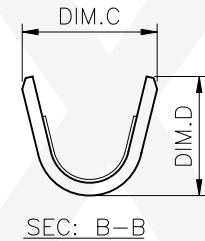
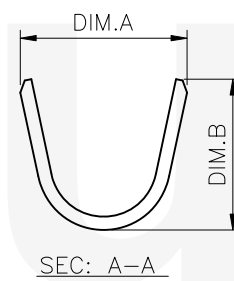


Ordering Code:

CP35 TN* * P E S
 ① ② ③ ④ ⑤ ⑥

- ① Series No.
- ② Accept wire gauge:
 TN1= AWG #26 ~ #30
 TN2= AWG #20 ~ #24
- ③ Plating code:
 1= Tin plated over Nickel
 A= Selective Gold flash plated over 50μ" Nickel
 B= Selective 15μ" Gold plated over 50μ" Nickel
 C= Selective 30μ" Gold plated over 50μ" Nickel
- ④ Material : P= Phosphor Bronze
- ⑤ Plating method: E= Pre-tinned
- ⑥ Style: S= Receptacle terminal



P/N	Wire Gauge	Insulation Diameter	Finish	Reel Q'TY
CP35TN11PES	AWG#26~#30	1.35 (.053) MAX.	2.03μm (80μinch) Min. Tin plated over	12,000 PCS
CP35TN21PES	AWG#20~#24	1.85 (.073) MAX.	0.76μm (30μinch) Nickel	
CP35TN1APES	AWG#26~#30	1.35 (.053) MAX.	Selective gold flash on surface contact area	
CP35TN2APES	AWG#20~#24	1.85 (.073) MAX.	over 1.27μm (50μinch) Nickel	
CP35TN1BPES	AWG#26~#30	1.35 (.053) MAX.	Selective 0.38μm (15μinch) gold on surface	
CP35TN2BPES	AWG#20~#24	1.85 (.073) MAX.	contact area over 1.27μm (50μinch) Nickel	
CP35TN1CPES	AWG#26~#30	1.35 (.053) MAX.	Selective 0.76μm (30μinch) gold on surface	
CP35TN2CPES	AWG#20~#24	1.85 (.073) MAX.	contact area over 1.27μm (50μinch) Nickel	

P/N	DIM.A	DIM.B	DIM.C	DIM.D
CP35TN1*PES	2.1 (.083)	1.9 (.075)	1.7 (.067)	1.5 (.059)
CP35TN2*PES	2.5 (.098)	2.4 (.094)	2.1 (.083)	2.0 (.079)

RoHS Compliant

⑦	Sandy	8/7-18'	ECNT118180	DATE	UNIT: mm / inch	TITLE:	瀚荃股份有限公司 CviLux Corporation
⑥	Enya	11/07-13'	ECNT113108/ECNT113091/ECRT113022	DRAWN BY: Sandy	8/7-18'	CP35 FEMALE CRIMP TERMINAL	
⑤	Sun	3/19-10'	ECR10015-0/ECN10105	ENGINEER: Sun	8/15-18'	MATERIAL:	
④	Sun	5/06-09'	ECR09045-1/ECN09225	CHECKED BY: Eisley	8/16-18'	FINISH:	
SYM	NAME	DATE	REVISIONS	APPROVED BY: Eisley	8/16-18'		DRAWING NO. CP3503SM PART NO. CP35TN**PES SCALE 6 / 1 SHEET 1 OF 1

CVILUX CORP
 2018.08.23
 ISSUED