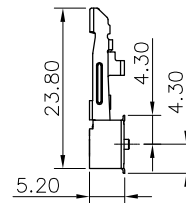
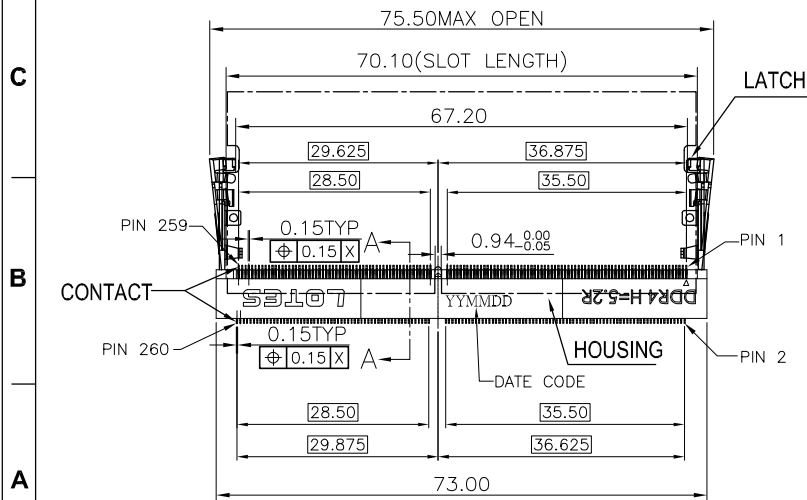
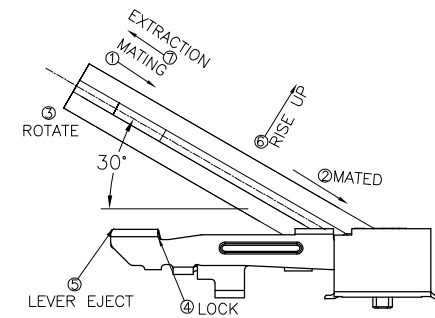
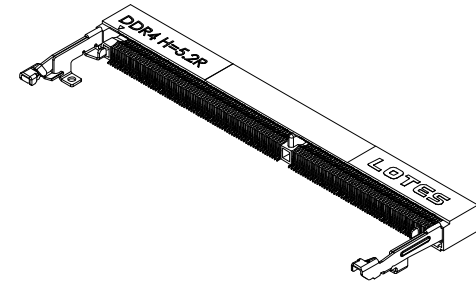
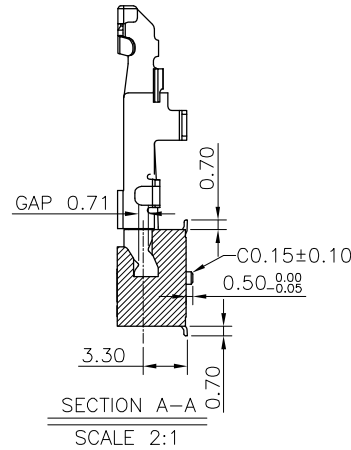
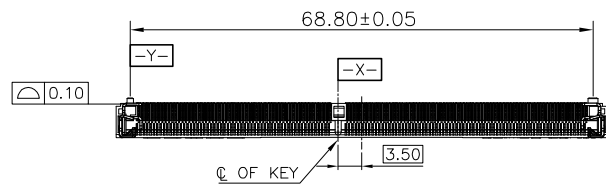
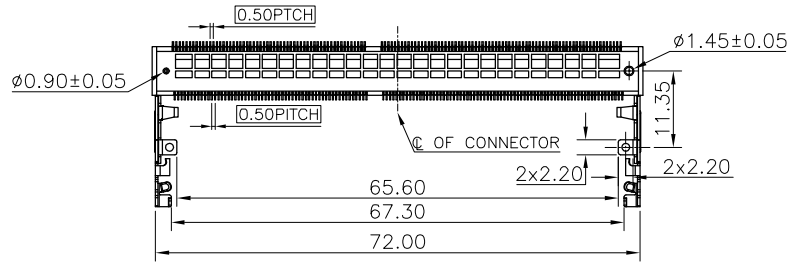


REV.	ECR/N NO./DESCRIPTION	DATE	DRAWN	CHECKED	APPROVE
C	RD140**	05/20'15	XU	Vito	Barney
D	RD140**	08/12'15	XU	Vito	Barney
E	RD140**	09/09'15	XU	Vito	Barney



GENERAL TOLERANCES UNLESS SPECIFIED

X ± 0.35	X° ± 3°
.XX ± 0.25	.X° ± 2°
.XXX ± 0.15	.XX° ± 1°

PART NO.
SEE TABLE

APPROVED BY
Barney

CHECKED BY
Vito

DRAWN BY
XU

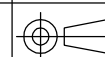
LOTES

TITLE
SODDR4 5.2H 260 PIN RVS TYPE

DWG NO.
AP-ADDR0208

SIZE
A4

UNITS
MM [INCH]



SHEET	SCALE	REV
1 / 5	1 : 1	E

NOTES:

1.MATERIALS:

HOUSING: LCP,UL 94V-0.

CONTACT: BRASS C2680.

LATCH: STAINLESS STEEL SUS301.

2.FINISH:

1)CONTACT:UNDERPLATED NICKEL 50~150u",
GOLD PLATED ON SOLDER AREA.
GOLD PLATED ON CONTACT AREA.(DETAL SEE TABLE)

2)LATCH:UNDERPLATED NICKEL 50~150u",MATTE TIN 80u" MIN.

3.ELECTRICAL PERFORMANCE

LLCR INITIAL 50mΩ MAX PER CONTACT.

FINAL ΔLLCR=20mΩ MAX

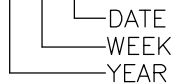
4.MECHANICAL PERFORMANCE,

MATING & UNMATING FORCE: 6.1 Kgf MAX.

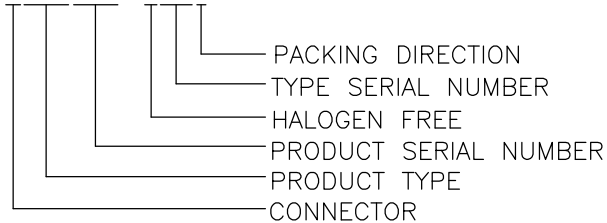
5.IR REFLOW:

THE PEAK TEMPERATURE ON THE BOARD SHALL BE MAINTAINED FOR 10 SECONDS AT 260±5°C.

6. DC: XXXXXX



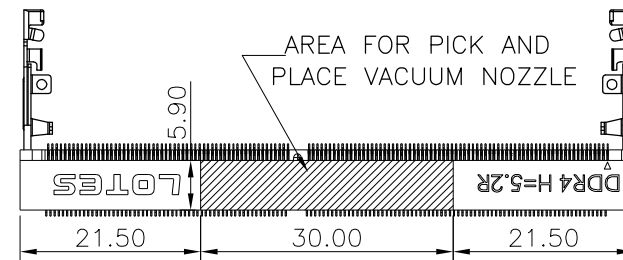
7.PRODUCT NUMBER NOTE:ADDR****-****



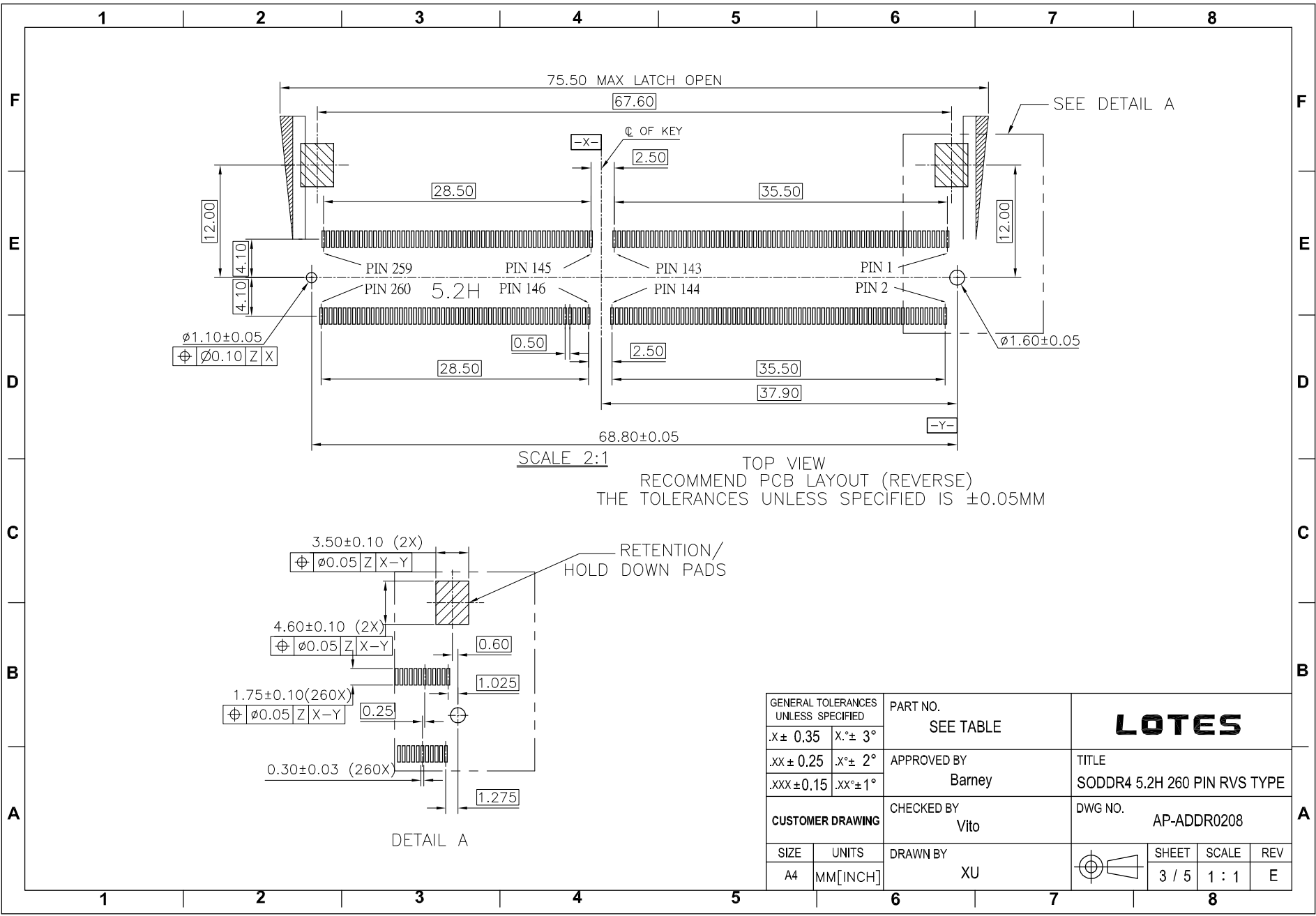
8.RoHS COMPLIANT.
HF COMPLIANT.

TABLE:

NO.	PART NO.	COLOR	DESCRIPTION
1	ADDR0208-P001A	BLACK	GOLD G/F ON CONTACT AREA
			GOLD G/F ON SOLDER AREA
2	ADDR0208-P002A	BLACK	GOLD 10u" ON CONTACT AREA
			GOLD G/F ON SOLDER AREA
3	ADDR0208-P003A	BLACK	GOLD 15u" ON CONTACT AREA
			GOLD G/F ON SOLDER AREA
4	ADDR0208-P004A	BLACK	GOLD 30u" ON CONTACT AREA
			GOLD G/F ON SOLDER AREA

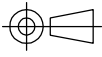


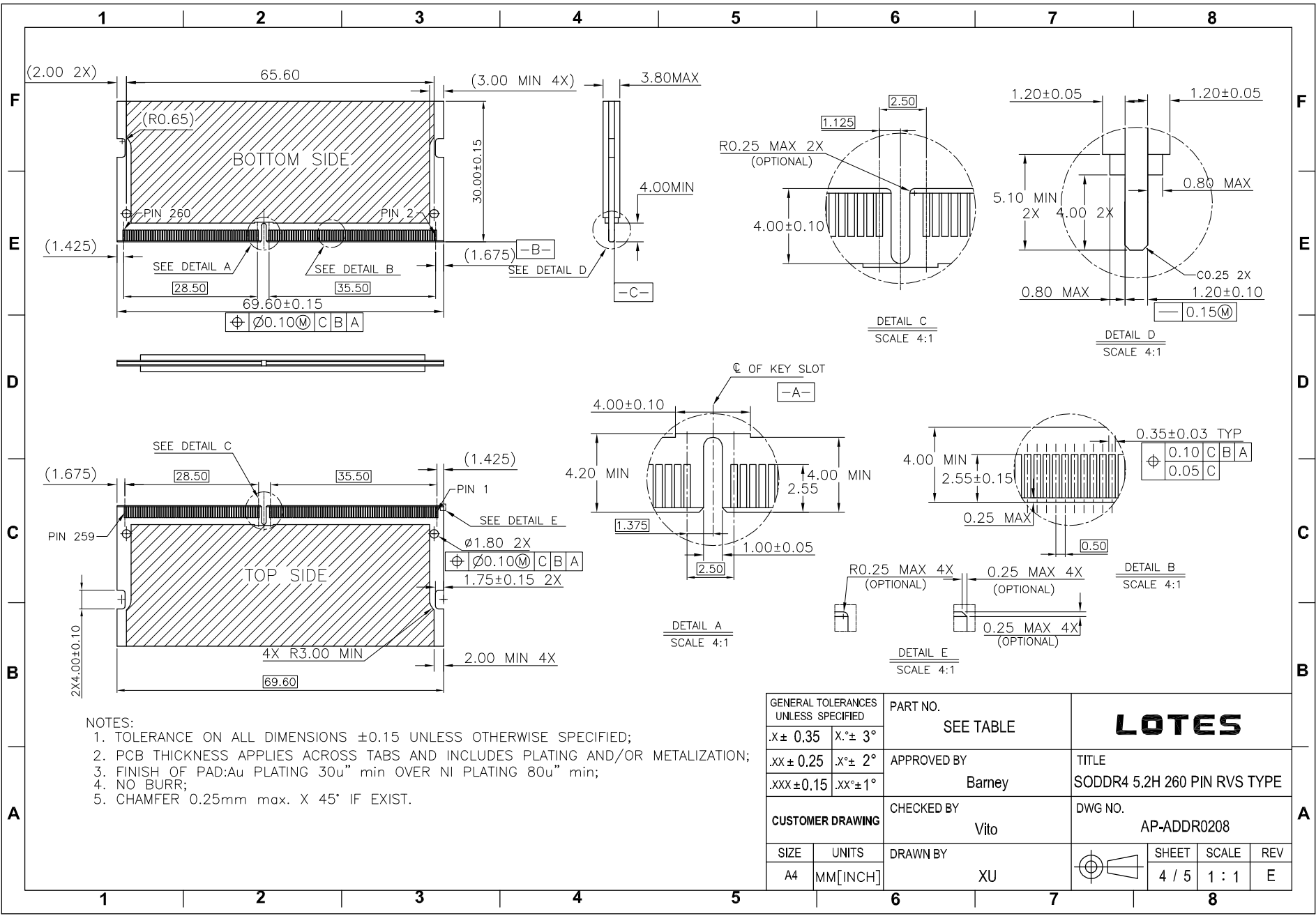
GENERAL TOLERANCES UNLESS SPECIFIED		PART NO.	LOTES			
SEE TABLE		SEE TABLE				
X ± 0.35	X° ± 3°	APPROVED BY	TITLE			
XX ± 0.25	.X° ± 2°	Barney	SODDR4 5.2H 260 PIN RVS TYPE			
.XXX ± 0.15	.XX° ± 1°	CHECKED BY	DWG NO.			
CUSTOMER DRAWING		Vito	AP-ADDR0208			
SIZE	UNITS	DRAWN BY		SHEET	SCALE	REV
A4	MM [INCH]	XU		2 / 5	5 : 4	E



SCALE 2:1
 TOP VIEW
 RECOMMEND PCB LAYOUT (REVERSE)
 THE TOLERANCES UNLESS SPECIFIED IS ±0.05MM

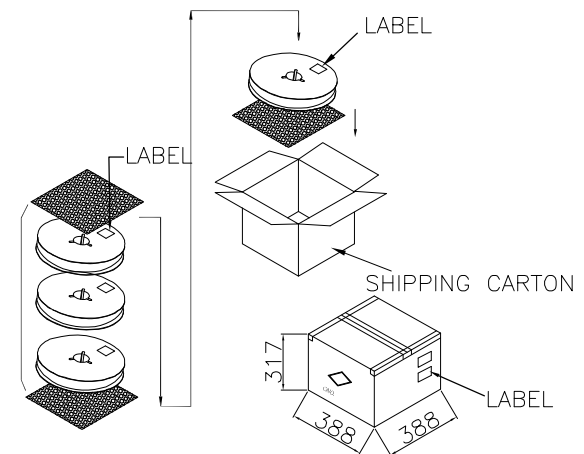
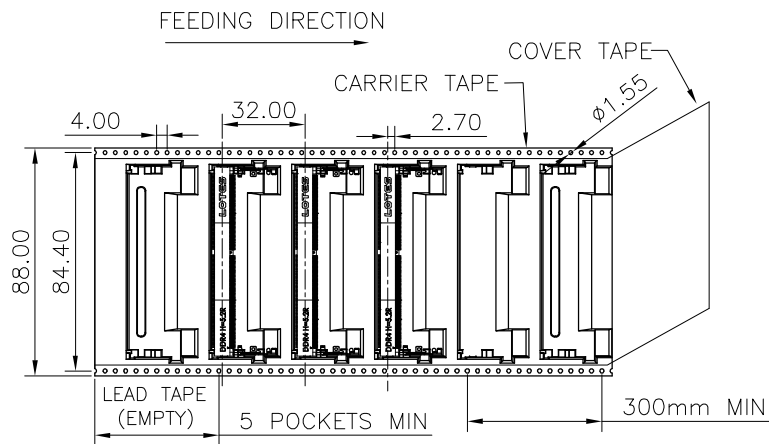
DETAIL A

GENERAL TOLERANCES UNLESS SPECIFIED		PART NO. SEE TABLE	LOTES			
X ± 0.35	X.° ± 3°					
.XX ± 0.25	.X.° ± 2°	APPROVED BY Barney	TITLE SODDR4 5.2H 260 PIN RVS TYPE			
.XXX ± 0.15	.XX.° ± 1°	CHECKED BY Vito	DWG NO. AP-ADDR0208			
SIZE A4	UNITS MM [INCH]	DRAWN BY XU		SHEET 3 / 5	SCALE 1 : 1	REV E



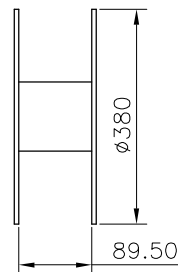
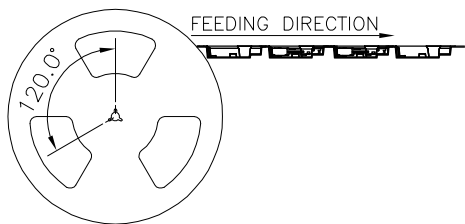
- NOTES:
1. TOLERANCE ON ALL DIMENSIONS ± 0.15 UNLESS OTHERWISE SPECIFIED;
 2. PCB THICKNESS APPLIES ACROSS TABS AND INCLUDES PLATING AND/OR METALIZATION;
 3. FINISH OF PAD: Au PLATING 30u" min OVER NI PLATING 80u" min;
 4. NO BURR;
 5. CHAMFER 0.25mm max. X 45° IF EXIST.

GENERAL TOLERANCES UNLESS SPECIFIED		PART NO. SEE TABLE	LOTES					
.X \pm 0.35	X.° \pm 3°					APPROVED BY Barney	TITLE SODDR4 5.2H 260 PIN RVS TYPE	
.XX \pm 0.25	.X° \pm 2°						DWG NO. AP-ADDR0208	
.XXX \pm 0.15	.XX° \pm 1°	CHECKED BY Vito	REV E					
CUSTOMER DRAWING		DRAWN BY XU	SHEET 4 / 5					
SIZE A4	UNITS MM [INCH]	SCALE 1 : 1		REV E				



NOTES:

1. MATERIAL :
 - 1.1 CARRY TAPE: PS
 - 1.2 COVER TAPE: PET
 - 1.3 SHIPPING CARTON: CORRUGATED FIBER
2. DIMENSION :
 - 2.1 REEL: W=88.0, $\phi A=380$
 - 2.2 SHIPPING CARTON: L=388, W=388, H=317 (INNER)
3. QUANTITY :
 - 3.1 PRIMARY PACKING: 300 PCS/REEL
 - 3.2 SECONDARY PACKING: 3 REELS/CARTON(900PCS)
4. PEELING RESISTANCE: 20gf~120gf.
5. PEELING SPEED: 300mm/minutes.



GENERAL TOLERANCES UNLESS SPECIFIED		PART NO. SEE TABLE	LOTES			
X ± 0.35	X° ± 3°					
.XX ± 0.25	.X° ± 2°	APPROVED BY Barney	TITLE SODDR4 5.2H 260 PIN RVS TYPE			
.XXX ± 0.15	.XX° ± 1°	CHECKED BY Vito	DWG NO. AP-ADDR0208			
SIZE A4	UNITS MM [INCH]	DRAWN BY XU	SHEET 5 / 5	SCALE N/A	REV E	