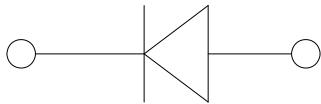
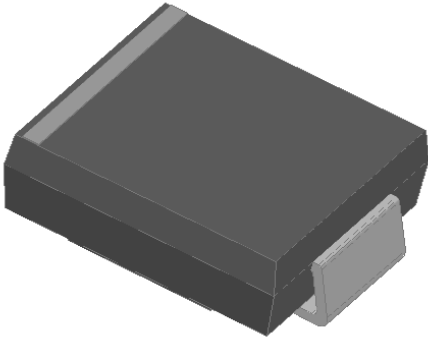


## Surface Mount Fast Recovery Rectifier Diode



### Features

- High current capability
- High reliability
- High surge current capability
- Low power loss
- Solder dip 260°C max. 10 s, per JESD 22-B106

### Mechanical Data

- **Package:** DO-214AB (SMC)  
Molding compound meets UL 94 V-0 flammability rating, RoHS-compliant
- **Terminals:** Tin plated leads, solderable per J-STD-002 and JESD22-B102
- **Polarity:** Color band denotes cathode end

### ■Maximum Ratings (Ta=25°C Unless otherwise specified)

PARAMETER	SYMBOL	UNIT	GR3A	GR3B	GR3D	GR3G	GR3J	GR3K	GR3M
Device marking code			GR3A	GR3B	GR3D	GR3G	GR3J	GR3K	GR3M
Repetitive Peak Reverse Voltage	$V_{RRM}$	V	50	100	200	400	600	800	1000
Average Rectified Output Current @60Hz sine wave, Resistance load, TL (FIG.1)	$I_o$	A	3.0						
Forward Surge Current (Non-repetitive) @60Hz Half-sine wave, 1 cycle, Ta=25°C	$I_{FSM}$	A	100						
Storage Temperature	$T_{stg}$	°C	-55 ~+150						
Junction Temperature	$T_j$	°C	-55 ~+150						

### ■Electrical Characteristics (Ta=25°C Unless otherwise specified)

PARAMETER	SYMBOL	UNIT	TEST CONDITIONS	GR3A	GR3B	GR3D	GR3G	GR3J	GR3K	GR3M
Maximum instantaneous forward voltage drop per diode	$V_F$	V	$I_{FM}=3.0A$	1.3						
Maximum reverse recovery time	$T_{RR}$	ns	$I_F=0.5A, I_R=1.0A, I_{rr}=0.25A$	150			250		500	
Maximum DC reverse current at rated DC blocking voltage per diode	$I_R$	μA	Ta=25°C	5						
			Ta=125°C	100						
Typical junction capacitance	$C_j$	pF	Measured at 1MHZ and Applied Reverse Voltage of 4.0 V.D.C.	35						



# GR3A THRU GR3M

## ■ Thermal Characteristics (T<sub>a</sub>=25°C Unless otherwise specified)

PARAMETER		SYMBOL	UNIT	GR3A	GR3B	GR3D	GR3G	GR3J	GR3K	GR3M
Thermal Resistance	Junction to ambient	R <sub>θJ-A</sub>	°C/W	48 <sup>1)</sup>						
	Junction to terminal	R <sub>θJ-L</sub>		13 <sup>1)</sup>						

Note(1)

Thermal resistance from junction to ambient and from junction to lead mounted on P.C.B. with 0.6" x 0.6" (16mm x 16mm) copper pad areas

## ■ Ordering Information (Example)

PREFERRED P/N	PACKAGE CODE	UNIT WEIGHT(g)	MINIMUM PACKAGE(pcs)	INNER BOX QUANTITY(pcs)	OUTER CARTON QUANTITY(pcs)	DELIVERY MODE
GR3A~GR3M	F1	Approximate 0.248	3000	6000	42000	13" reel

## ■ Characteristics(Typical)

FIG.1: I<sub>o</sub>-T<sub>L</sub> Curve

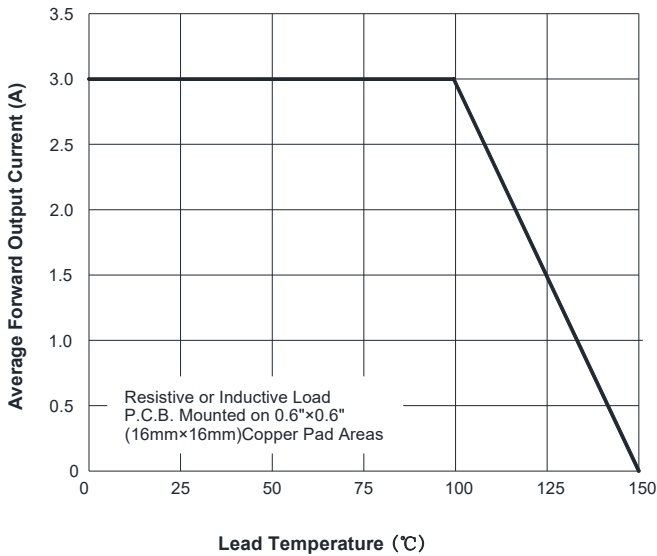


FIG.2: Forward Surge Current Capability

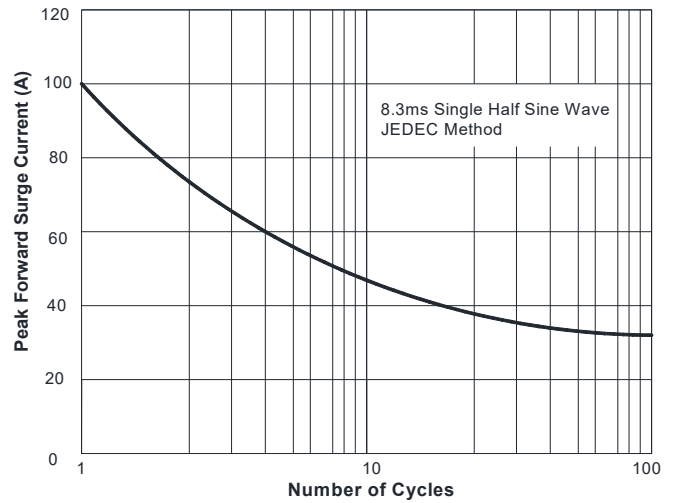


FIG.3: Forward Voltage

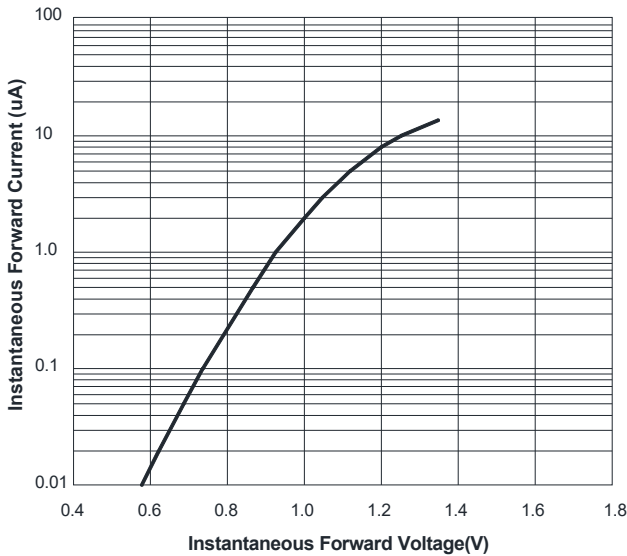


FIG.4: Typical Reverse Characteristics

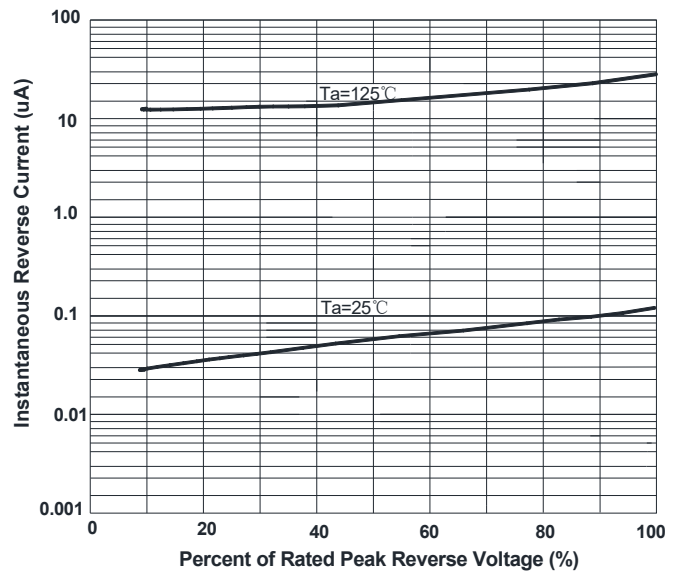
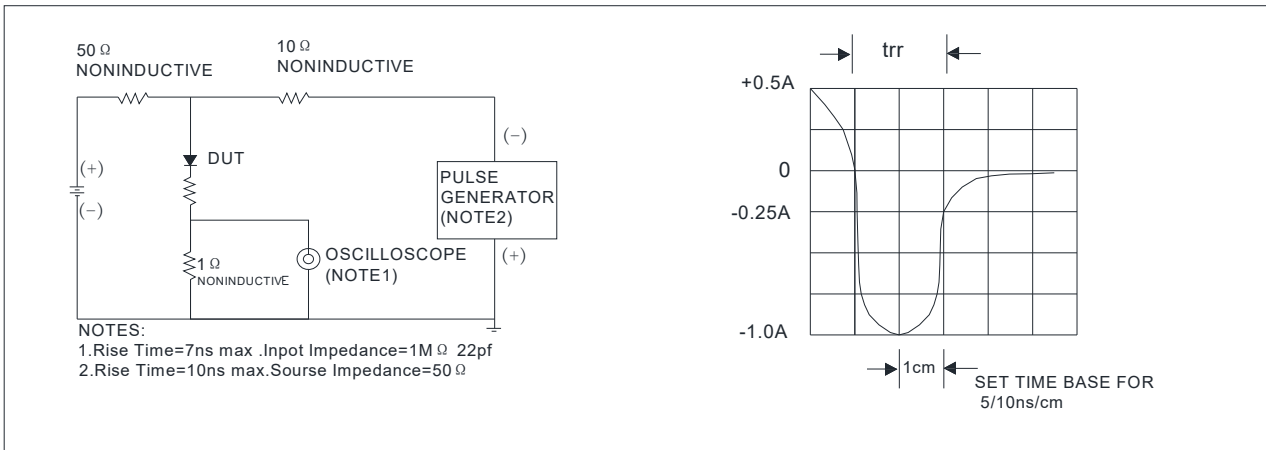
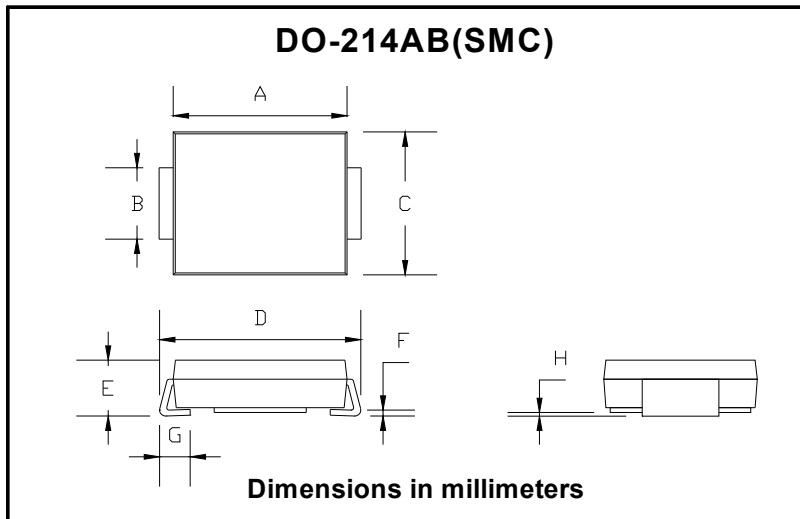


FIG.5: Diagram of circuit and Testing wave form of reverse recovery time

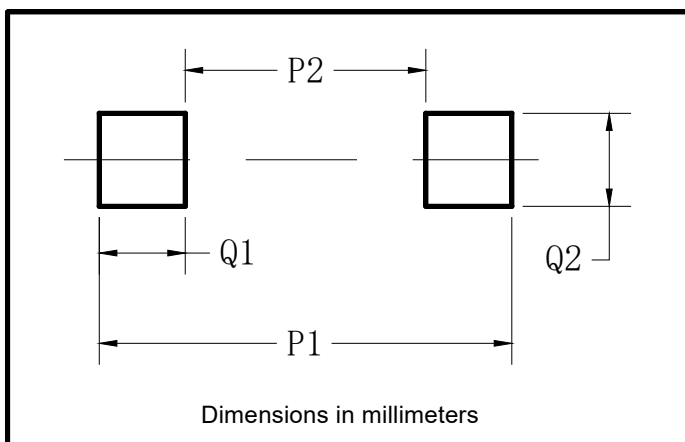


## ■ Outline Dimensions



DO-214AB (SMC)		
Dim	Min	Max
A	6.60	7.11
B	2.85	3.27
C	5.59	6.22
D	7.75	8.13
E	1.99	2.61
F	0.15	0.31
G	0.76	1.52
H	0.10	0.20

## ■ Suggested pad layout



Dim	Typ
P1	9.9
P2	3.84
Q1	3.03
Q2	3.82



## GR3A THRU GR3M

---

### Disclaimer

The information presented in this document is for reference only. Yangzhou Yangjie Electronic Technology Co., Ltd. reserves the right to make changes without notice for the specification of the products displayed herein to improve reliability, function or design or otherwise.

The product listed herein is designed to be used with ordinary electronic equipment or devices, and not designed to be used with equipment or devices which require high level of reliability and the malfunction of which would directly endanger human life (such as medical instruments, transportation equipment, aerospace machinery, nuclear-reactor controllers, fuel controllers and other safety devices), Yangjie or anyone on its behalf, assumes no responsibility or liability for any damages resulting from such improper use of sale.

This publication supersedes & replaces all information previously supplied. For additional information, please visit our website [http:// www.21yangjie.com](http://www.21yangjie.com) , or consult your nearest Yangjie's sales office for further assistance.