



NOTES:

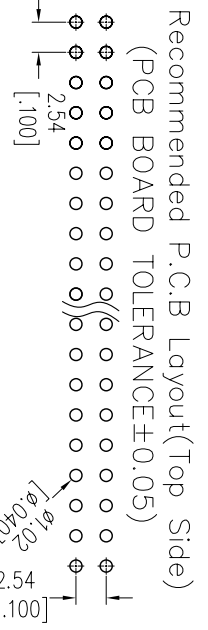
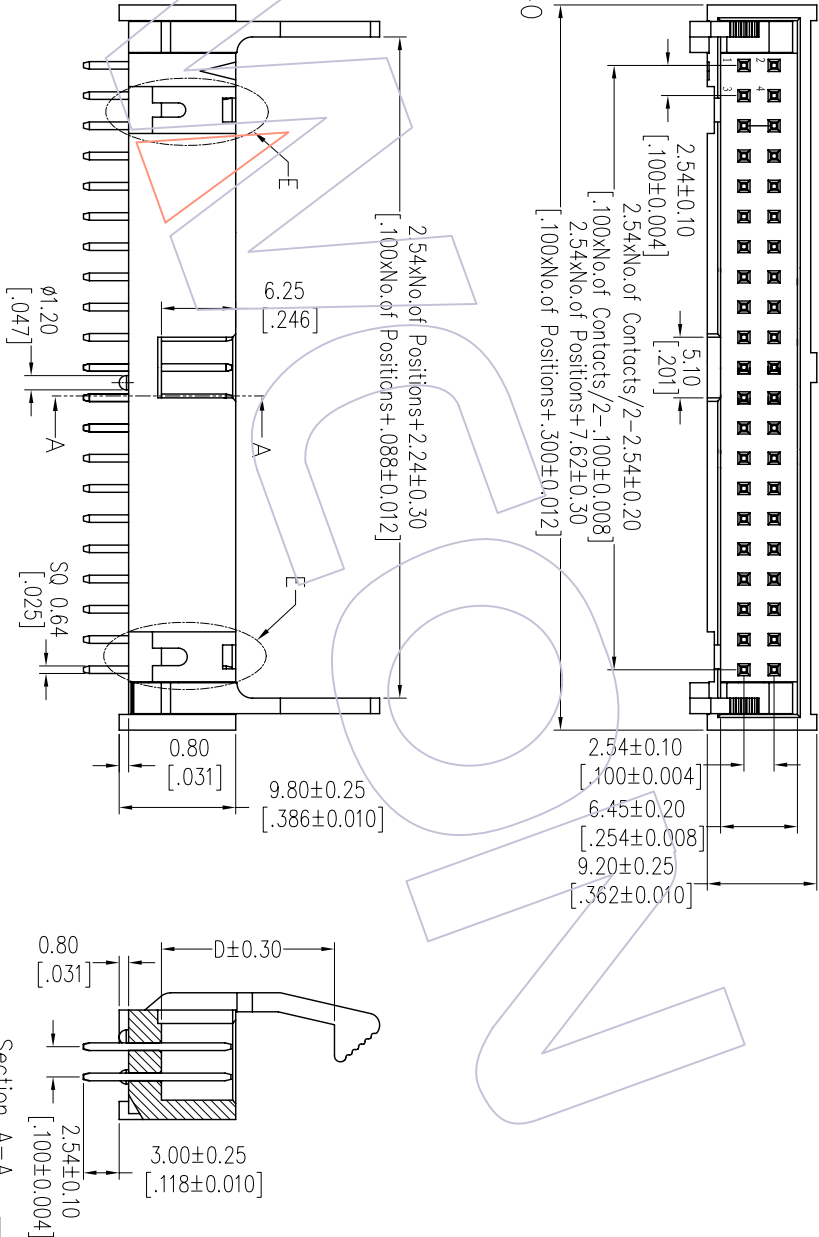
- Current Rating: 3.0AMP
- Contact Resistance: 20mΩ Max
- Withstand Voltage: 1000V AC/DC
- Insulation Resistance: 1000MΩ Min
- Operation Temperature: -40°C to +105°C
- Contact Material: Brass
- Contact plating: Au Or Sn over Ni
- Latch Material: Zinc Alloy
- Latch plating: Ni
- Insulator Material: PBT or PA9T+30%GF UL94V-0
- Above 20 Poles With "E" Profile.

Ordering Information

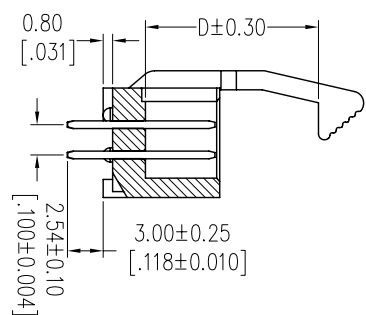
3211 - XX S XX B X X 1

- No. of Pins
- Contact Plating: G=Gold Flash, G3=10µ"Gold, G4=15µ"Gold, G5=30µ"Gold
- Insulator Color: B=Black, U=Blue, G=Grey(427C), E=Grey(413C)
- Latch Type: L=Long Latch, S=Short Latch
- Packing: A=Tray, T=Tube
- SN=Tin

Item	Pitch	Mating
Standard	2.54	5212/5211
Alternate		



Section A-A



Dimension and it hesses list

PART NO	D
3211-XXSXXBLX1	14.55
3211-XXSXXBSX1	10.65

REV	DATE	MODIFICATION DESCRIPTION
A0	2012/10/08	NEW

OPERATION	DRAW	DATE	SCALE	FIT	PART NO.
XX	JYhuang	2012/10/08	±0.40	mm	SBE TAB
XX	CHECK	DATE	±0.25	A4	TITLE:
XX	APPROVE	DATE	±0.15	1/1	2.54 EJECTOR HEADER 180° METAL LATCH
Angle	PROJ.				Customer NO.
± 3'					

WCON

Http: www.wcon.com

WCON-Dongguan Tel: +86 769 85358920 Fax: +86 769 85358915 E-mail: sales@wcon.com

WCON-Kunshan Tel: +86 512 57468408 Fax: +86 512 57468468 E-mail: sales@wcon.com