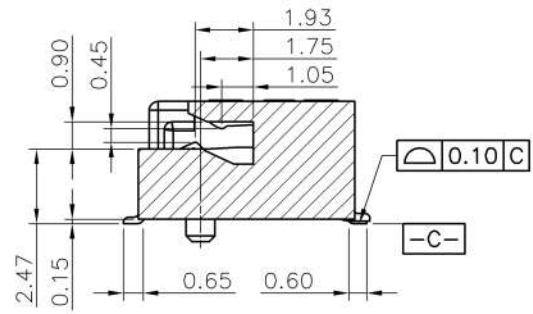
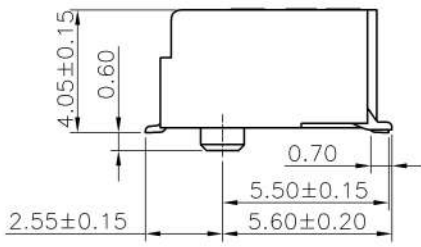


| REV. | ECR/N NO./DESCRIPTION | DATE     | DRAWN        | CHECKED | APPROVE |
|------|-----------------------|----------|--------------|---------|---------|
| 2    | SN14082               | 07/16'14 | Lxh          | Vito    | Barney  |
| 3    | SN14155               | 11/15'14 | Lxh          | Vito    | Barney  |
| 3A   | SN17***               | 12/07'17 | Jingyan.Zhao | Vito    | Ford    |



SEE SECTION O-O



| GENERAL TOLERANCES UNLESS SPECIFIED |                          | PART NO.                        | <b>LOTES</b>                        |
|-------------------------------------|--------------------------|---------------------------------|-------------------------------------|
| X ± 0.35                            | X.° ± 3°                 | SEE TABLE                       |                                     |
| XX ± 0.25                           | .X° ± 2°                 | APPROVED BY<br>Barney 10/28'13  | TITLE<br>0.5 PITCH M.2 H4.2 (KEY G) |
| .XXX ± 0.15                         | .XX° ± 1°                | CHECKED BY<br>Vito 10/28'13     | DWG NO.<br>AP-APCI0093              |
| CUSTOMER DRAWING                    | DRAWN BY<br>Lxh 10/28'13 | SHEET SCALE REV<br>1 / 5 4:1 3A |                                     |

TABLE:

| NO. | PART NO.       | DESCRIPTION               | DURABILITY |
|-----|----------------|---------------------------|------------|
| 1   | APCI0093-P009A | GOLD G/F ON CONTACT AREA  | 25 CYCLES  |
|     |                | GOLD G/F ON SOLDER AREA   |            |
| 2   | APCI0093-P010A | GOLD 10u" ON CONTACT AREA | 25 CYCLES  |
|     |                | GOLD G/F ON SOLDER AREA   |            |
| 3   | APCI0093-P011A | GOLD 15u" ON CONTACT AREA | 25 CYCLES  |
|     |                | GOLD G/F ON SOLDER AREA   |            |
| 4   | APCI0093-P012A | GOLD 30u" ON CONTACT AREA | 60 CYCLES  |
|     |                | GOLD G/F ON SOLDER AREA   |            |

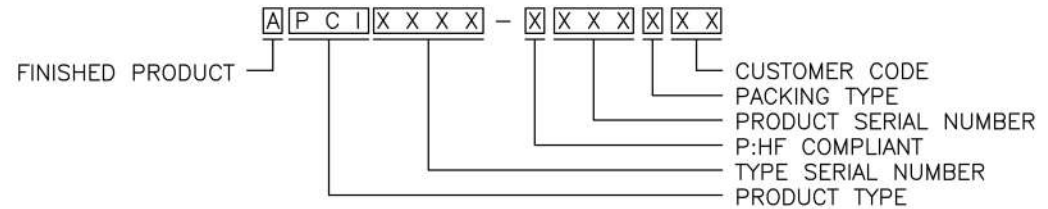
Notes:

1. MATERIAL SPECIFICATION:
  - 1.1. HOUSING:LCP+40%GF,UL94V-0,COLOR:BLACK.
  - 1.2. CONTACT:COPPER ALLOY.
  - 1.3. PEG:STEEL.
2. PLATING SPECIFICATION:
  - 2.1. CONTACT:50u" MIN.NICKEL UNDER PLATING OVER ALL.PLATING ON SOLDER AREA:SEE TABLE  
GOLD PLATING ON CONTACT AREA:SEE TABLE
  - 2.2. PEG:50u" MIN. NICKEL UNDER PLATING OVER ALL.  
80u" MIN. MATTE TIN PLATING ON SOLDER AREA.
3. HF COMPLIANT, RoHS COMPLIANT.
4. DATE CODE: XX XX XX  

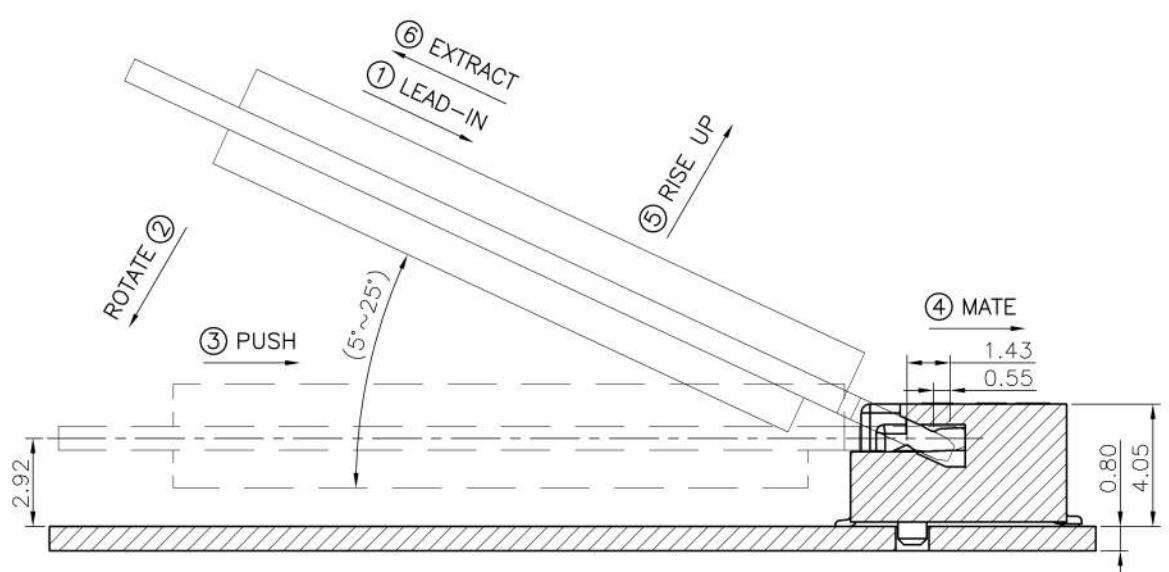
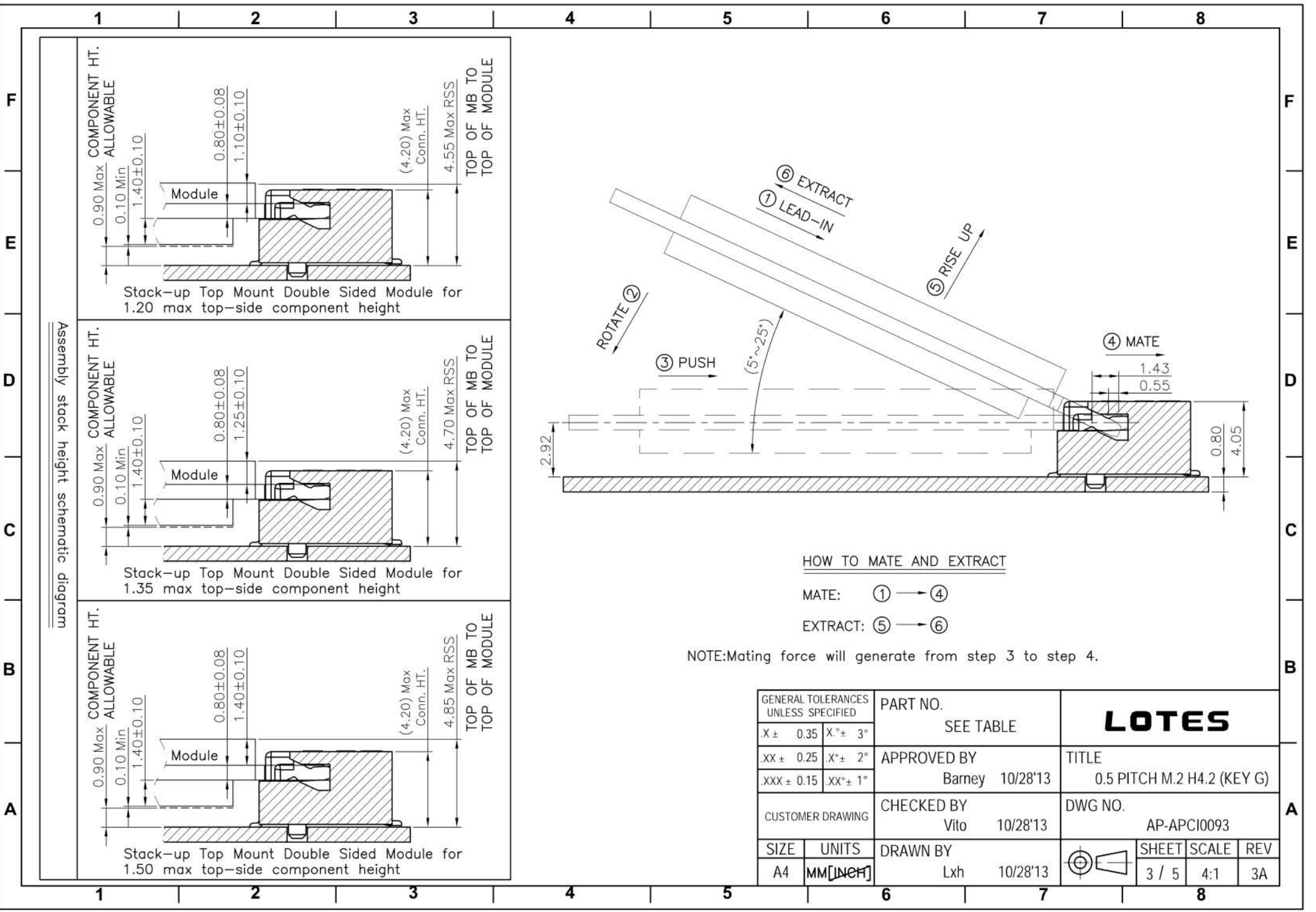
DAY  
 WEEK  
 YEAR
5. MECHANICAL PERFORMANCE:
  - 5.1. DURABILITY: SEE TABLE
6. ELECTRICAL PERFORMANCE:
  - 6.1. CURRENT: 0.5A PER PIN.
  - 6.2. LLCR: INITIAL 55mΩ MAX.;FINAL ΔLLCR=20mΩ MAX.
7. IR REFLOW:
 

THE TEMPERATURE SHALL BE 260±5°C MAINTAINING 10±1 SECONDS.

8. PRODUCT NUMBER NOTE:



|                                     |           |                 |                                     |       |       |     |
|-------------------------------------|-----------|-----------------|-------------------------------------|-------|-------|-----|
| GENERAL TOLERANCES UNLESS SPECIFIED |           | PART NO.        | <b>LOTES</b>                        |       |       |     |
| X ± 0.35                            | X° ± 3°   | SEE TABLE       |                                     |       |       |     |
| XX ± 0.25                           | X° ± 2°   | APPROVED BY     | TITLE<br>0.5 PITCH M.2 H4.2 (KEY G) |       |       |     |
| XXX ± 0.15                          | .XX° ± 1° | Barney 10/28'13 |                                     |       |       |     |
| CUSTOMER DRAWING                    |           | CHECKED BY      | DWG NO.<br>AP-APCI0093              |       |       |     |
|                                     |           | Vito 10/28'13   |                                     |       |       |     |
| SIZE                                | UNITS     | DRAWN BY        |                                     | SHEET | SCALE | REV |
| A4                                  | MM [INCH] | Lxh 10/28'13    |                                     | 2 / 5 | 4:1   | 3A  |

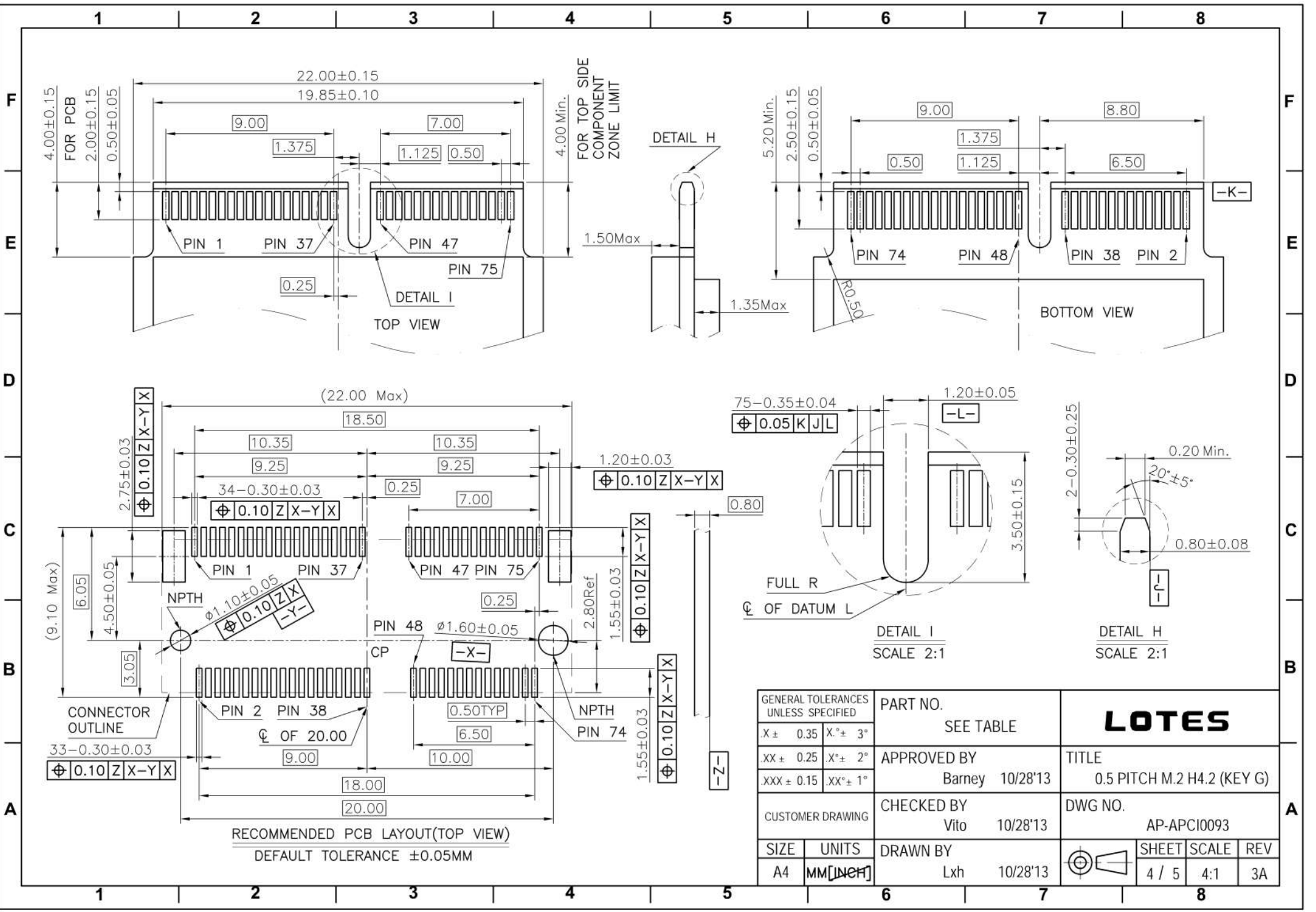


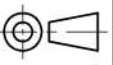
HOW TO MATE AND EXTRACT

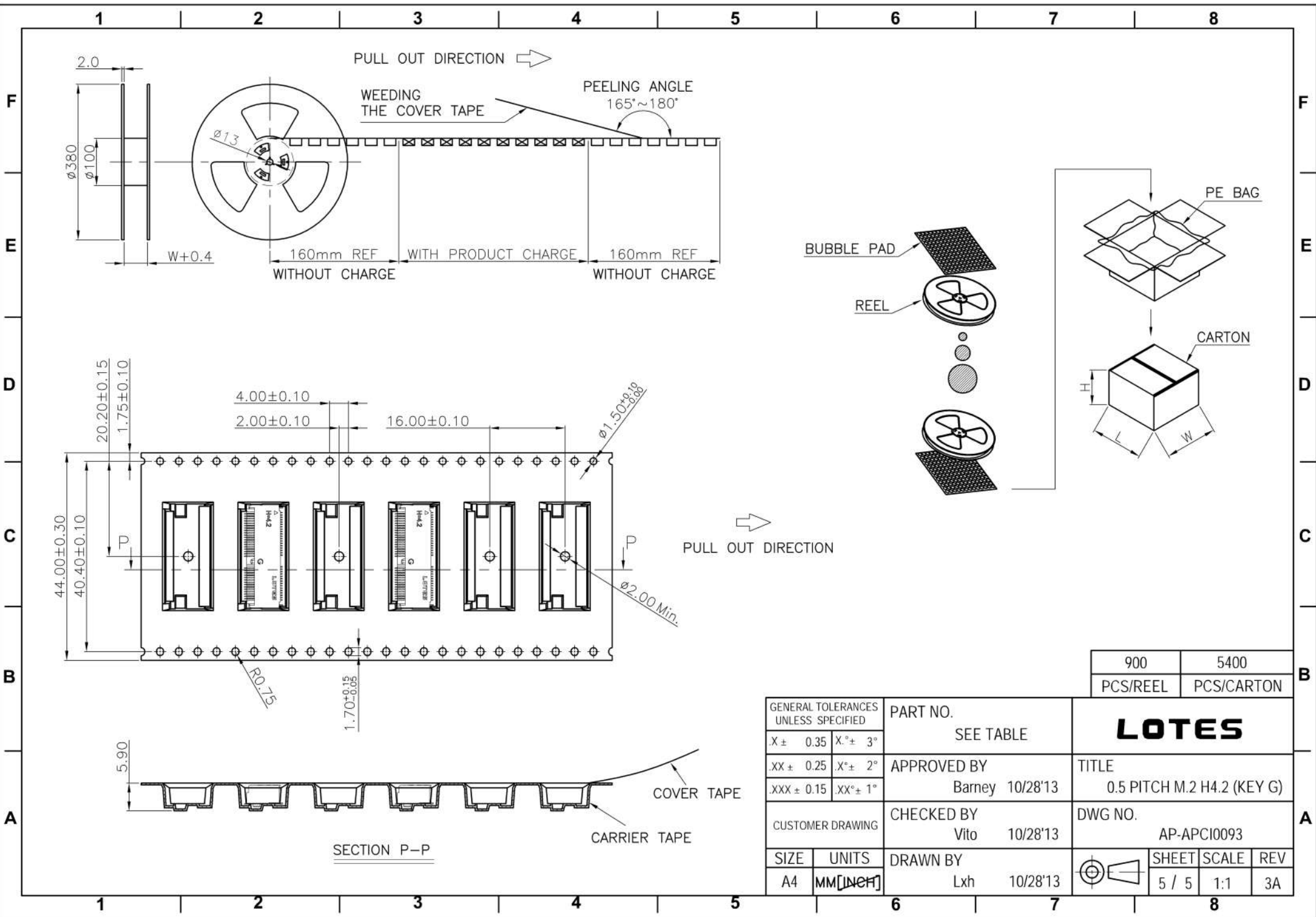
- MATE: ① → ④
- EXTRACT: ⑤ → ⑥

NOTE: Mating force will generate from step 3 to step 4.

|                                     |           |                 |                            |       |       |     |
|-------------------------------------|-----------|-----------------|----------------------------|-------|-------|-----|
| GENERAL TOLERANCES UNLESS SPECIFIED |           | PART NO.        | <b>LOTES</b>               |       |       |     |
| X ± 0.35                            | X° ± 3°   | SEE TABLE       |                            |       |       |     |
| XX ± 0.25                           | X° ± 2°   | APPROVED BY     | TITLE                      |       |       |     |
| .XXX ± 0.15                         | .XX° ± 1° | Barney 10/28'13 | 0.5 PITCH M.2 H4.2 (KEY G) |       |       |     |
| CUSTOMER DRAWING                    |           | CHECKED BY      | DWG NO.                    |       |       |     |
|                                     |           | Vito 10/28'13   | AP-APCI0093                |       |       |     |
| SIZE                                | UNITS     | DRAWN BY        |                            | SHEET | SCALE | REV |
| A4                                  | MM [INCH] | Lxh 10/28'13    |                            | 3 / 5 | 4:1   | 3A  |



|                                     |               |                 |   |       |       |     |
|-------------------------------------|---------------|-----------------|---|-------|-------|-----|
| GENERAL TOLERANCES UNLESS SPECIFIED |               | PART NO.        | <b>LOTES</b>  |       |       |     |
| SEE TABLE                           |               | SEE TABLE       |   |       |       |     |
| X ± 0.35                            | X° ± 3°       | APPROVED BY     | TITLE   |       |       |     |
| XX ± 0.25                           | .X° ± 2°      | Barney 10/28'13 | 0.5 PITCH M.2 H4.2 (KEY G)  |       |       |     |
| .XXX ± 0.15                         | .XX° ± 1°     | CHECKED BY      | DWG NO.   |       |       |     |
| CUSTOMER DRAWING                    | Vito 10/28'13 | AP-APCI0093     |   |       |       |     |
| SIZE                                | UNITS         | DRAWN BY        |  | SHEET | SCALE | REV |
| A4                                  | MM [Inch]     | Lxh 10/28'13    |   | 4 / 5 | 4:1   | 3A  |



PULL OUT DIRECTION →  
 WEEDING THE COVER TAPE  
 PEELING ANGLE 165°~180°

160mm REF WITHOUT CHARGE  
 WITH PRODUCT CHARGE  
 160mm REF WITHOUT CHARGE

BUBBLE PAD

REEL

PE BAG

CARTON

PULL OUT DIRECTION →

SECTION P-P

COVER TAPE  
 CARRIER TAPE

|          |            |
|----------|------------|
| 900      | 5400       |
| PCS/REEL | PCS/CARTON |

|                                     |           |                 |                            |       |       |     |
|-------------------------------------|-----------|-----------------|----------------------------|-------|-------|-----|
| GENERAL TOLERANCES UNLESS SPECIFIED |           | PART NO.        | <b>LOTES</b>               |       |       |     |
| X ± 0.35                            | X.° ± 3°  | SEE TABLE       |                            |       |       |     |
| XX ± 0.25                           | X.° ± 2°  | APPROVED BY     | TITLE                      |       |       |     |
| .XXX ± 0.15                         | .XX° ± 1° | Barney 10/28'13 | 0.5 PITCH M.2 H4.2 (KEY G) |       |       |     |
| CUSTOMER DRAWING                    |           | CHECKED BY      | DWG NO.                    |       |       |     |
|                                     |           | Vito 10/28'13   | AP-APCI0093                |       |       |     |
| SIZE                                | UNITS     | DRAWN BY        |                            | SHEET | SCALE | REV |
| A4                                  | MM [INCH] | Lxh 10/28'13    |                            | 5 / 5 | 1:1   | 3A  |