

REV.	ECR/N NO./DESCRIPTION	DATE	DRAWN	CHECKED	APPROVE
1	SN14190	01/04'15	SAM	VITO	BARNEY

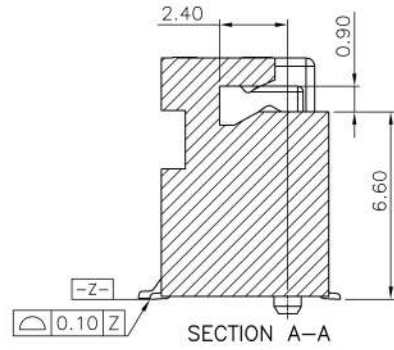
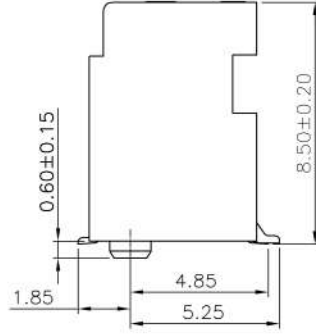
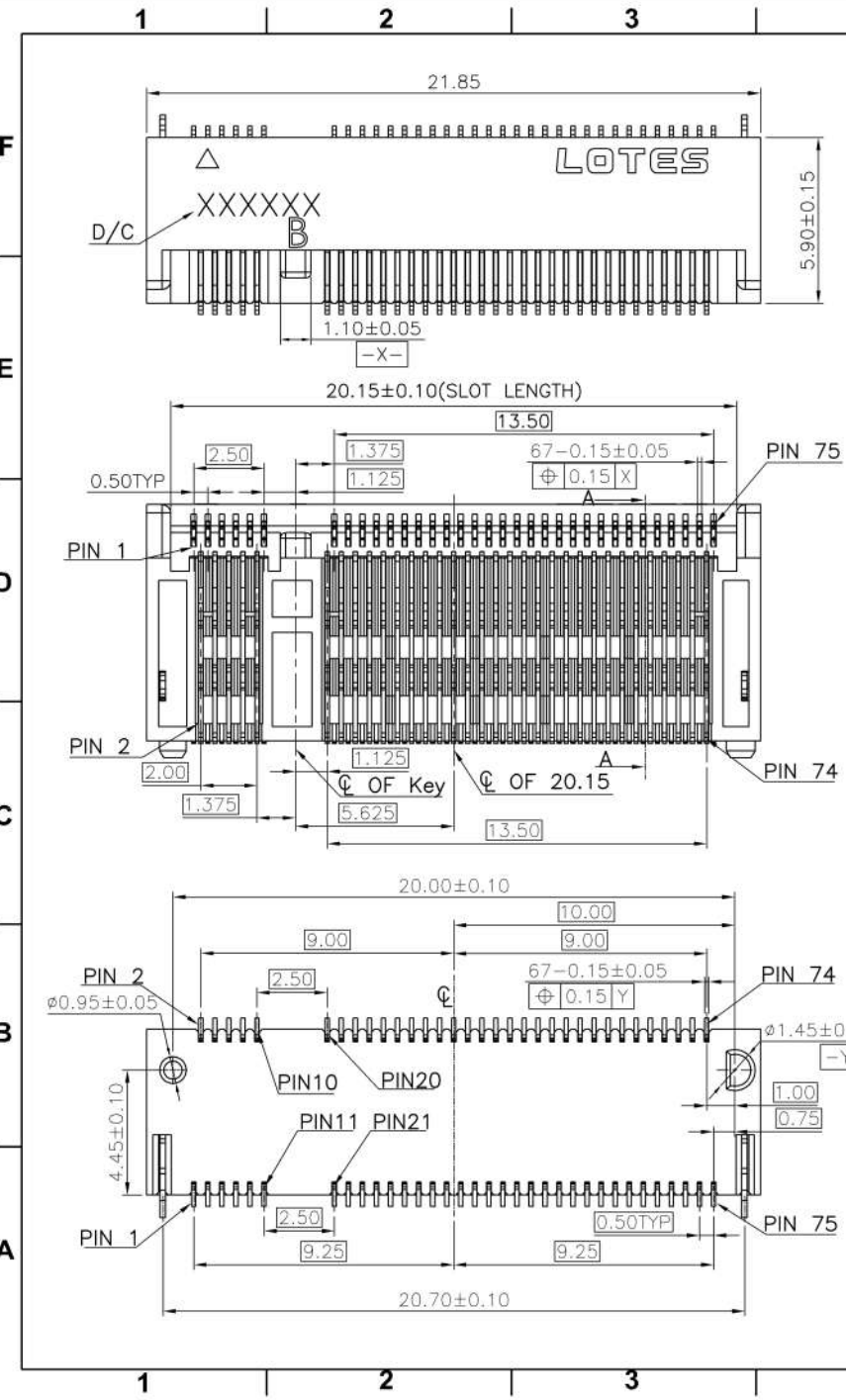
NOTES:

- MATERIAL SPECIFICATION:
  - HOUSING: LCP+40%GF,UL-94V0,BLACK.
  - CONTACT: COPPER ALLOY C1065.
  - SMT TAB: S50C.
- PLATING SPECIFICATION:
  - CONTACT:
    - 50u" MIN. NICKEL UNDER PLATING OVER ALL.
    - G/F" PLATING ON SOLDER AREA.
    - GOLD PLATING ON CONTACT AREA SEE TABLE.
  - SMT TAB:
    - 50u" MIN. NICKEL UNDER PLATING OVER ALL.
    - 80u" MIN. MATTE TIN PLATING ON SOLDER AREA.
- HF COMPLIANT, ROHS COMPLIANT.
- DATE CODE: XXXXXX
 

DAY	WEEK	YEAR
X	X	X
- MECHANICAL PERFORMANCE:
  - DURABILITY: SEE TABLE
- ELECTRICAL PERFORMANCE:
  - CURRENT: 0.5A PER PIN.
  - LLCR: INITIAL 55mΩ MAX. ; FINAL ΔLLCR=20mΩ MAX..
- IR REFLOW:
 

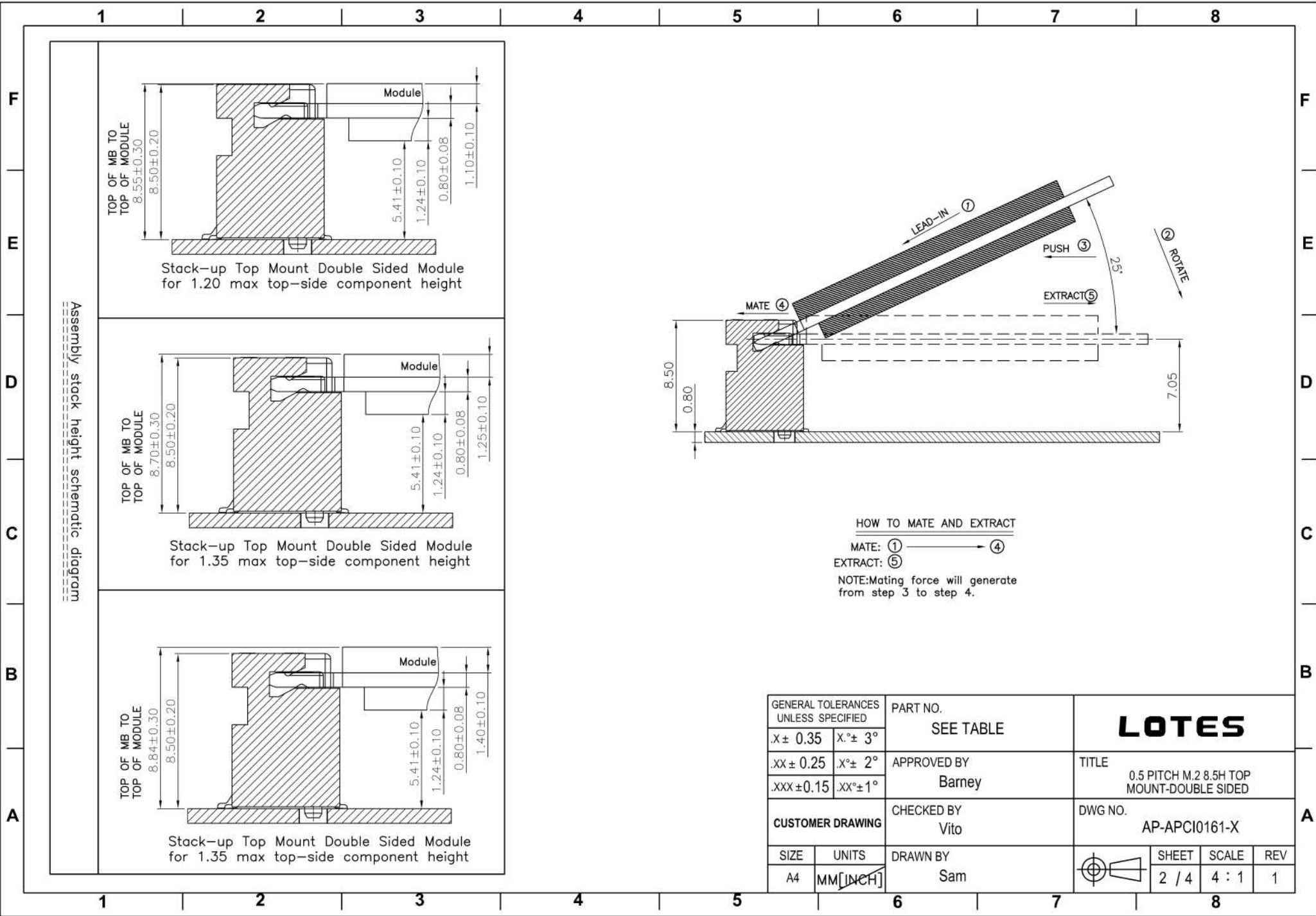
THE TEMPERATURE SHALL BE 260±5°C MAINTAINING 10±1 SECONDS.
- PRODUCT NUMBER NOTE
 

A	P	C	I	X	X	X	X	X	X	X	
PACKING TYPE			PRODUCT SERIAL NUMBER			P:HF COMPLIANT			TYPE SERIAL NUMBER		
PRODUCT TYPE			FINISHED PRODUCT								

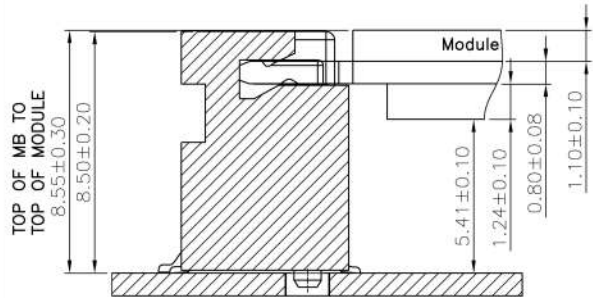


B-KEY	APCI0161-P004A	30u" MIN. GOLD	60 CYCLES
	APCI0161-P003A	15u" MIN. GOLD	25 CYCLES
	APCI0161-P002A	10u" MIN. GOLD	25 CYCLES
	APCI0161-P001A	1u" MIN. GOLD	25 CYCLES
KEY NO.	PART NO.	CONTACT PLATING	DURABILITY

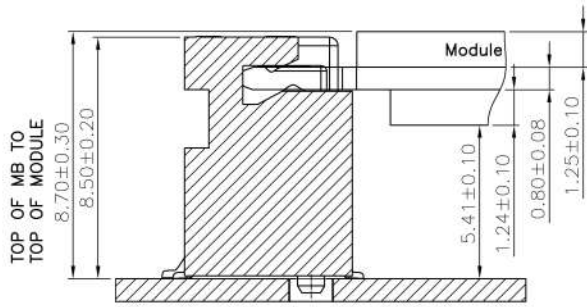
GENERAL TOLERANCES UNLESS SPECIFIED		PART NO. SEE TABLE	<b>LOTES</b>			
X± 0.35	X°± 3°					
.XX± 0.25	X°± 2°					
.XXX± 0.15	.XX°± 1°	APPROVED BY Barney	TITLE 0.5 PITCH M.2 8.5H TOP MOUNT-DOUBLE SIDED			
CUSTOMER DRAWING		CHECKED BY Vito	DWG NO. AP-APCI0161-X			
SIZE A4	UNITS MM [INCH]	DRAWN BY Sam	SHEET 1 / 4		SCALE 4 : 1	REV 1



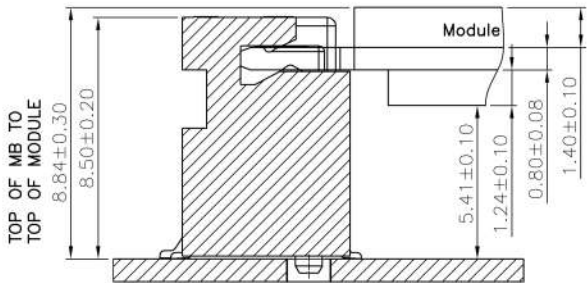
Assembly stack height schematic diagram



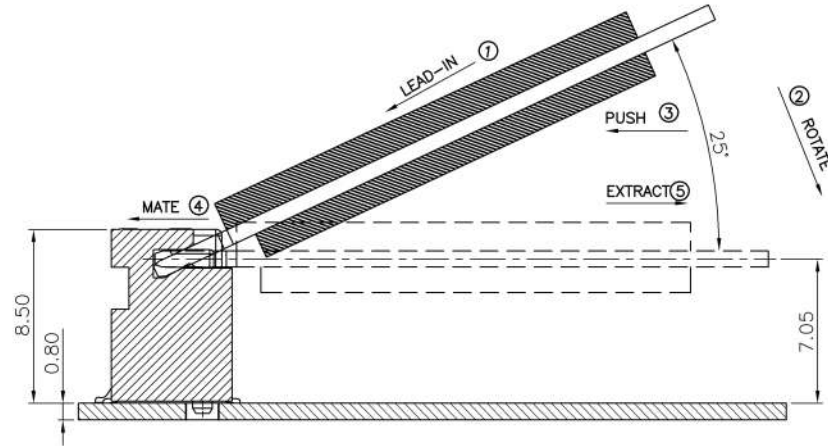
Stack-up Top Mount Double Sided Module for 1.20 max top-side component height



Stack-up Top Mount Double Sided Module for 1.35 max top-side component height



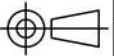
Stack-up Top Mount Double Sided Module for 1.35 max top-side component height

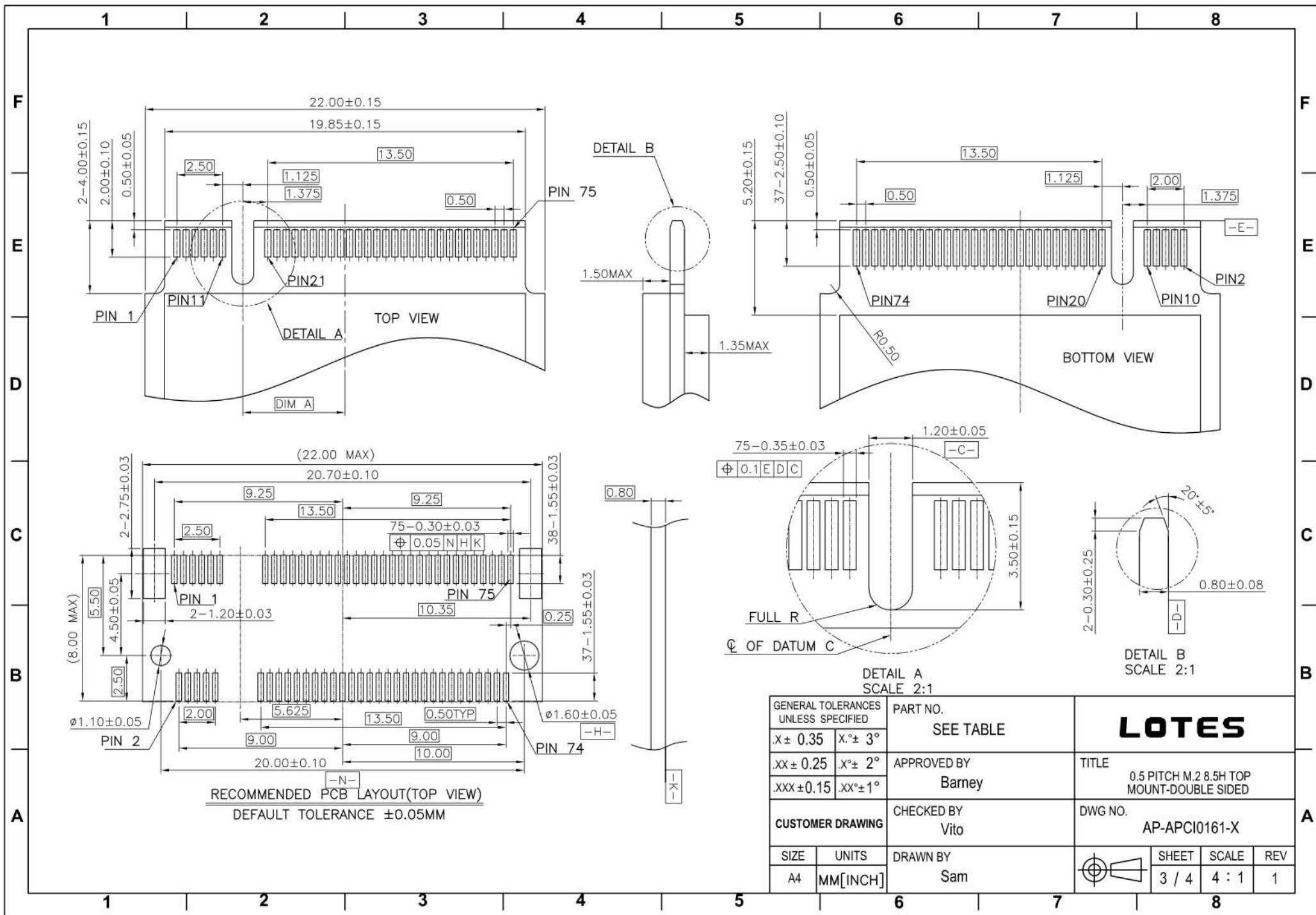


**HOW TO MATE AND EXTRACT**

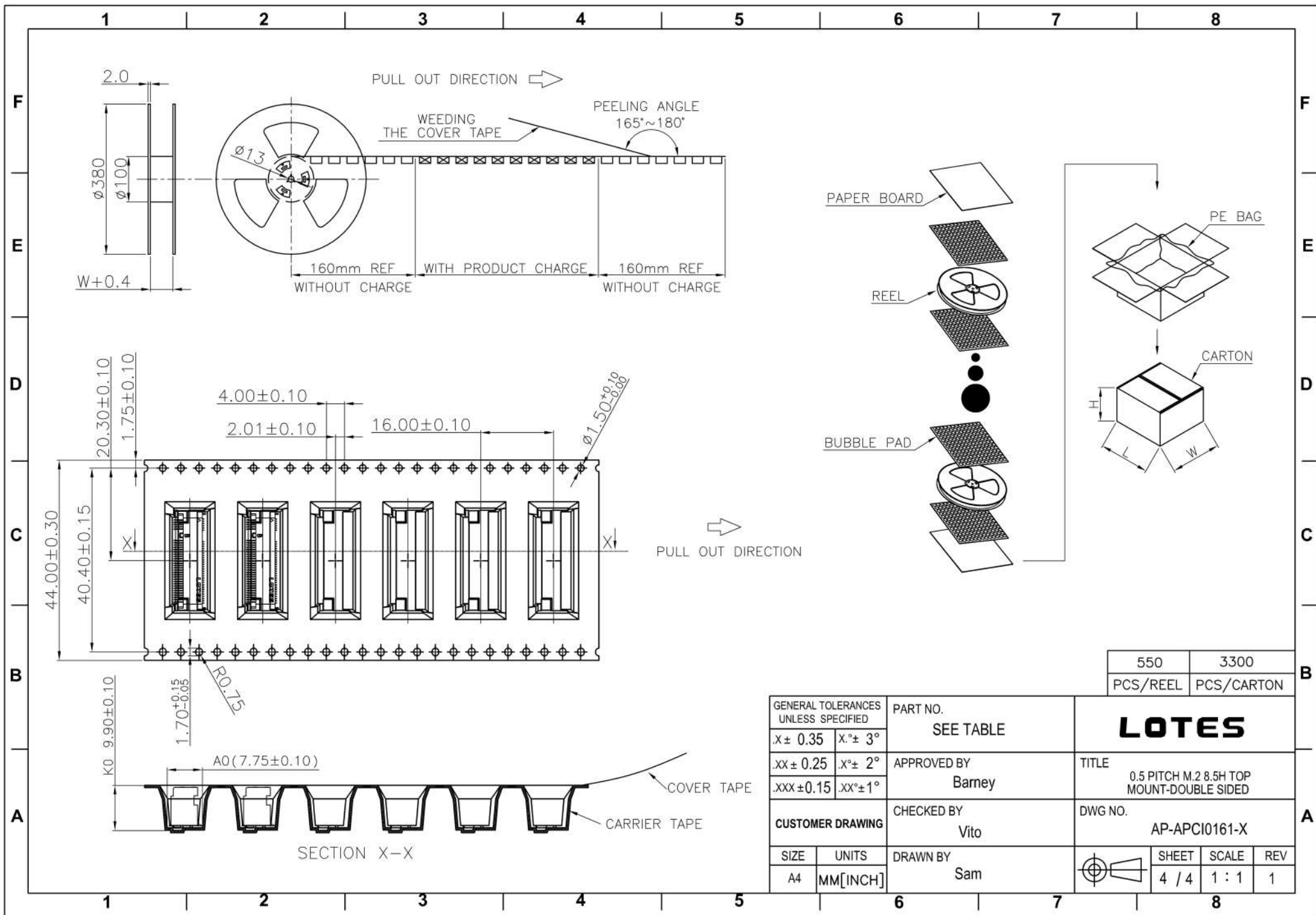
MATE: ① → ④  
 EXTRACT: ⑤

NOTE: Mating force will generate from step 3 to step 4.

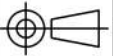
GENERAL TOLERANCES UNLESS SPECIFIED		PART NO. SEE TABLE	<b>LOTES</b>				
X ± 0.35	X ° ± 3°					APPROVED BY Barney	TITLE 0.5 PITCH M.2 8.5H TOP MOUNT-DOUBLE SIDED
.XX ± 0.25	X ° ± 2°		CHECKED BY Vito	DWG NO. AP-APCI0161-X			
.XXX ± 0.15	.XX ° ± 1°	CUSTOMER DRAWING	DRAWN BY Sam		SHEET 2 / 4	SCALE 4 : 1	REV 1



GENERAL TOLERANCES UNLESS SPECIFIED		PART NO. SEE TABLE	<b>LOTES</b>		
X± 0.35	X.°± 3°				
.XX± 0.25	X.°± 2°		CHECKED BY Vito	DWG NO. AP-APCI0161-X	
.XXX±0.15	.XX°±1°	CUSTOMER DRAWING	DRAWN BY Sam		
SIZE A4	UNITS MM[INCH]	SHEET 3 / 4		SCALE 4 : 1	REV 1



550	3300
PCS/REEL	PCS/CARTON

GENERAL TOLERANCES UNLESS SPECIFIED		PART NO. SEE TABLE	<b>LOTES</b>			
X ± 0.35	X° ± 3°					
.XX ± 0.25	X° ± 2°		APPROVED BY Barney	TITLE 0.5 PITCH M.2 8.5H TOP MOUNT-DOUBLE SIDED		
.XXX ± 0.15	.XX° ± 1°	CHECKED BY Vito	DWG NO. AP-APCI0161-X			
CUSTOMER DRAWING		DRAWN BY Sam		SHEET	SCALE	REV
SIZE A4	UNITS MM[INCH]			4 / 4	1 : 1	1