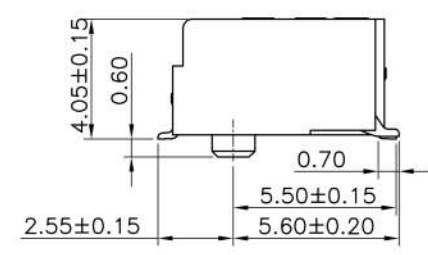
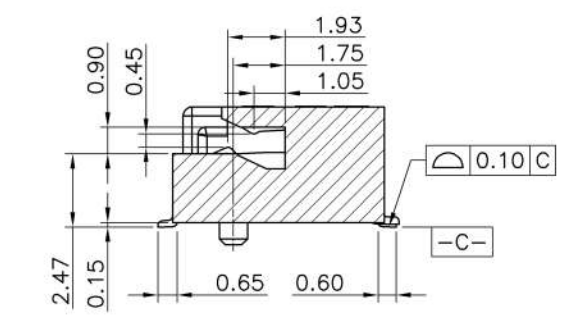
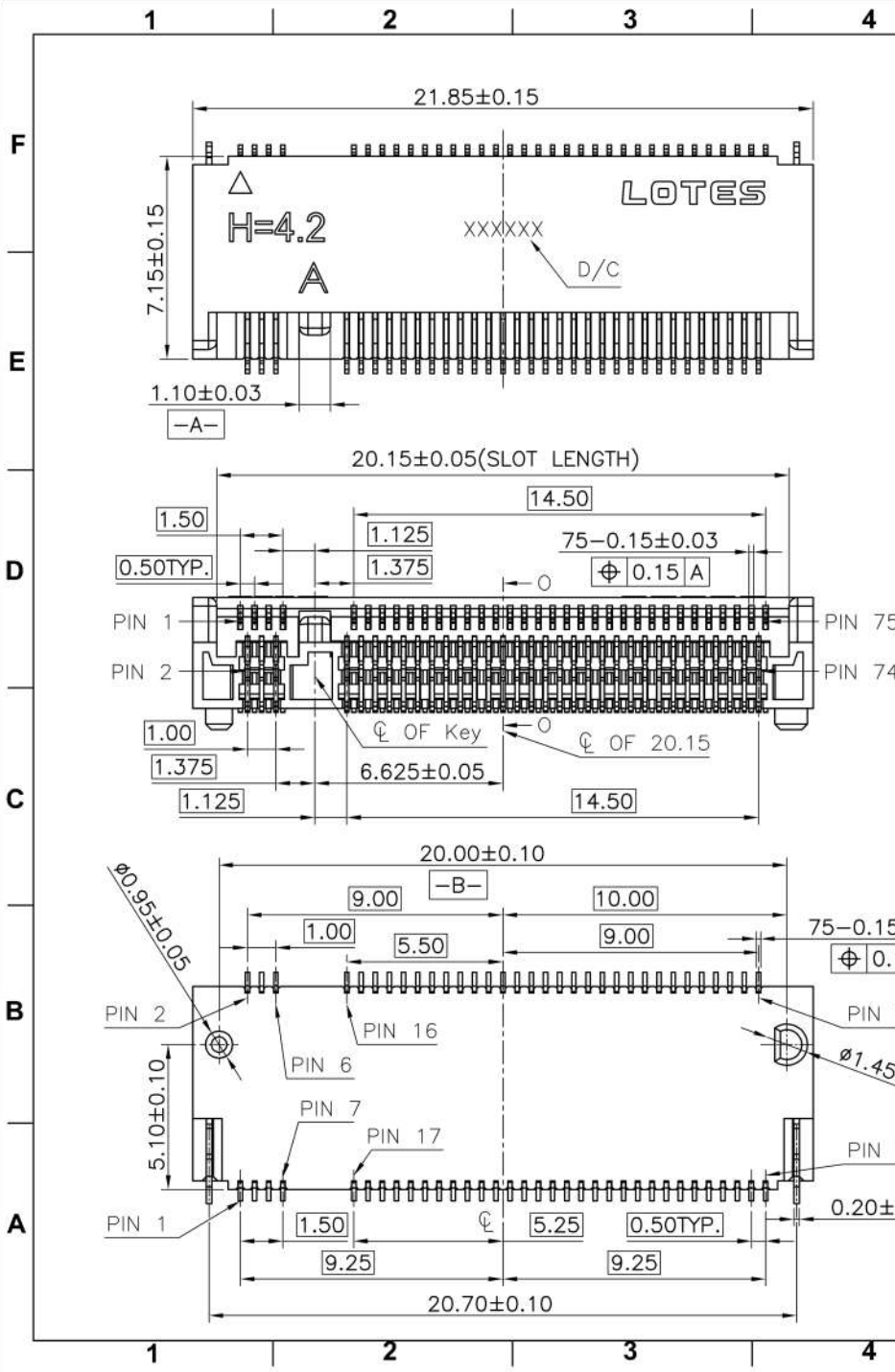


REV.	ECR/N NO./DESCRIPTION	DATE	DRAWN	CHECKED	APPROVE
1	SN14155	11/18'14	Lxh	Vito	Barney



GENERAL TOLERANCES UNLESS SPECIFIED		PART NO.	LOTES			
X ± 0.35	X ° ± 3°	SEE TABLE				
XX ± 0.25	.X ° ± 2°	APPROVED BY	TITLE			
XXX ± 0.15	.XX ° ± 1°	Barney 11/18'14	0.5 PITCH M.2 H4.2 (KEY A)			
CUSTOMER DRAWING		CHECKED BY	DWG NO.			
		Vito 11/18'14	AP-APCI0106			
SIZE	UNITS	DRAWN BY		SHEET	SCALE	REV
A4	MM [INCH]	Lxh 11/18'14		1 / 5	4:1	1

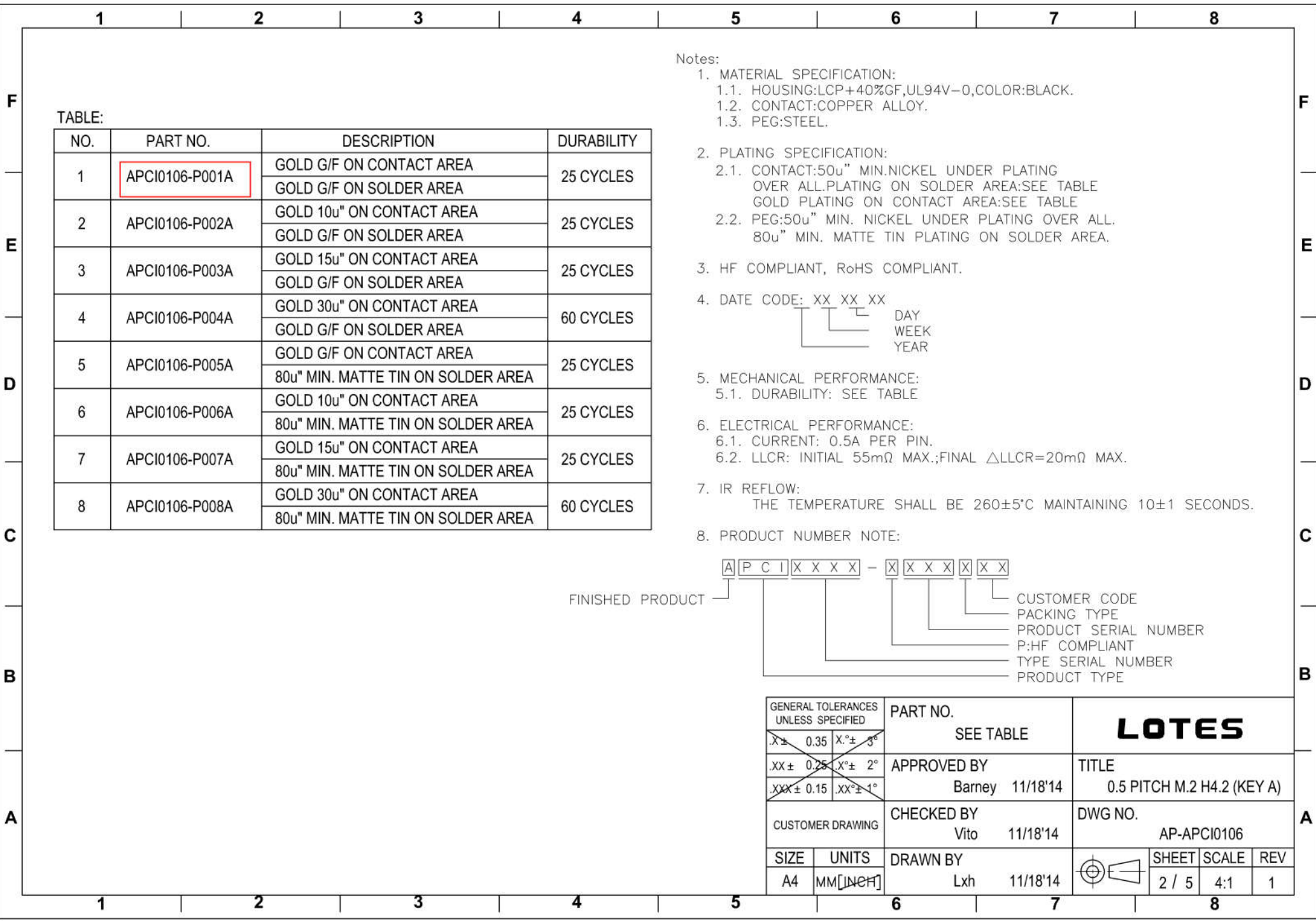


TABLE:

NO.	PART NO.	DESCRIPTION	DURABILITY
1	APCI0106-P001A	GOLD G/F ON CONTACT AREA	25 CYCLES
		GOLD G/F ON SOLDER AREA	
2	APCI0106-P002A	GOLD 10u" ON CONTACT AREA	25 CYCLES
		GOLD G/F ON SOLDER AREA	
3	APCI0106-P003A	GOLD 15u" ON CONTACT AREA	25 CYCLES
		GOLD G/F ON SOLDER AREA	
4	APCI0106-P004A	GOLD 30u" ON CONTACT AREA	60 CYCLES
		GOLD G/F ON SOLDER AREA	
5	APCI0106-P005A	GOLD G/F ON CONTACT AREA	25 CYCLES
		80u" MIN. MATTE TIN ON SOLDER AREA	
6	APCI0106-P006A	GOLD 10u" ON CONTACT AREA	25 CYCLES
		80u" MIN. MATTE TIN ON SOLDER AREA	
7	APCI0106-P007A	GOLD 15u" ON CONTACT AREA	25 CYCLES
		80u" MIN. MATTE TIN ON SOLDER AREA	
8	APCI0106-P008A	GOLD 30u" ON CONTACT AREA	60 CYCLES
		80u" MIN. MATTE TIN ON SOLDER AREA	

- Notes:
- MATERIAL SPECIFICATION:
 - HOUSING:LCP+40%GF,UL94V-0,COLOR:BLACK.
 - CONTACT:COPPER ALLOY.
 - PEG:STEEL.
 - PLATING SPECIFICATION:
 - CONTACT:50u" MIN.NICKEL UNDER PLATING OVER ALL.PLATING ON SOLDER AREA:SEE TABLE GOLD PLATING ON CONTACT AREA:SEE TABLE
 - PEG:50u" MIN. NICKEL UNDER PLATING OVER ALL. 80u" MIN. MATTE TIN PLATING ON SOLDER AREA.
 - HF COMPLIANT, RoHS COMPLIANT.
 - DATE CODE: XX XX XX
 - MECHANICAL PERFORMANCE:
 - DURABILITY: SEE TABLE
 - ELECTRICAL PERFORMANCE:
 - CURRENT: 0.5A PER PIN.
 - LLCR: INITIAL 55mΩ MAX.;FINAL ΔLLCR=20mΩ MAX.
 - IR REFLOW:

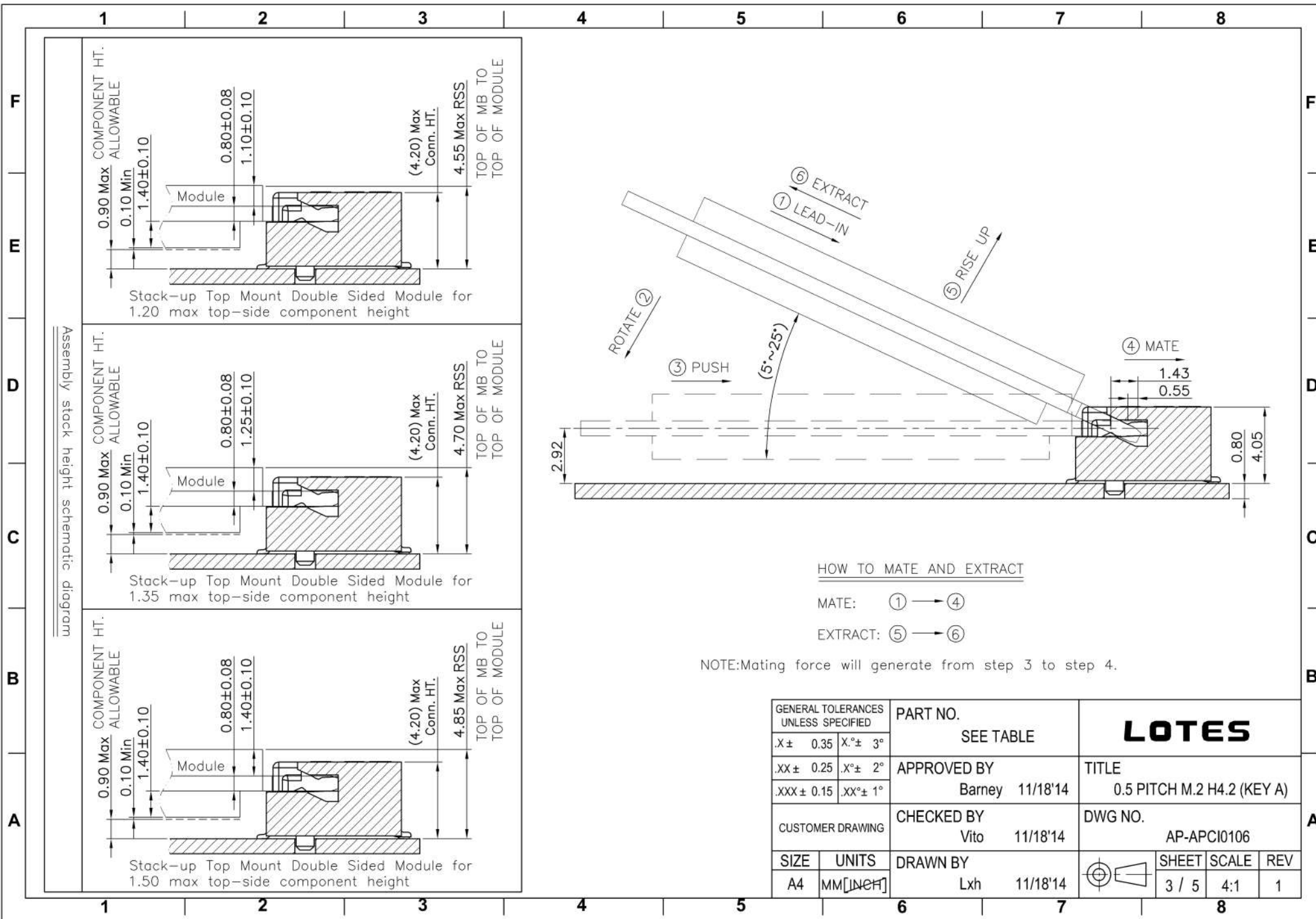
THE TEMPERATURE SHALL BE 260±5°C MAINTAINING 10±1 SECONDS.
 - PRODUCT NUMBER NOTE:

APCI XXXX - XXXXX XX

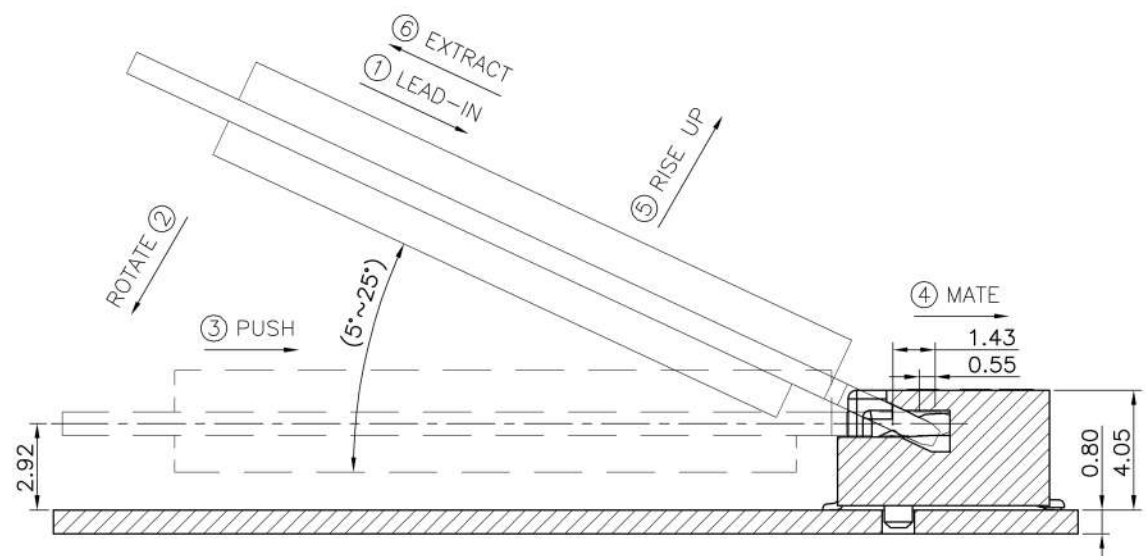
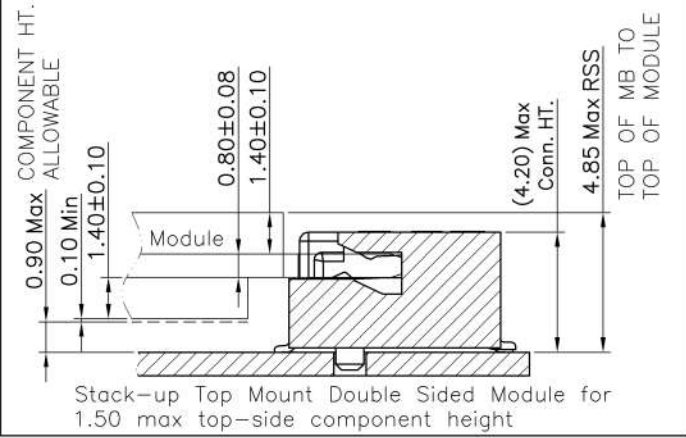
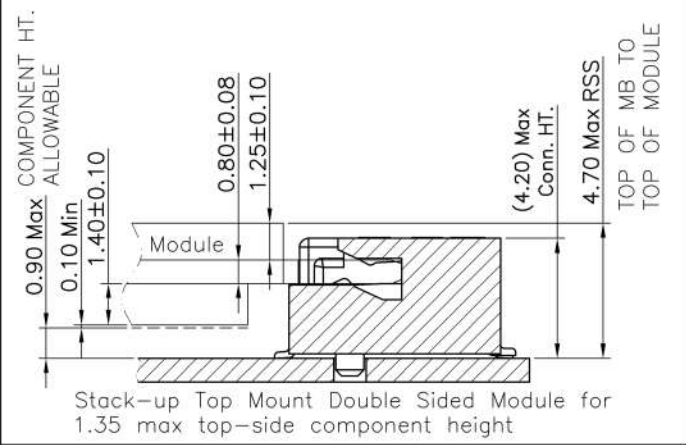
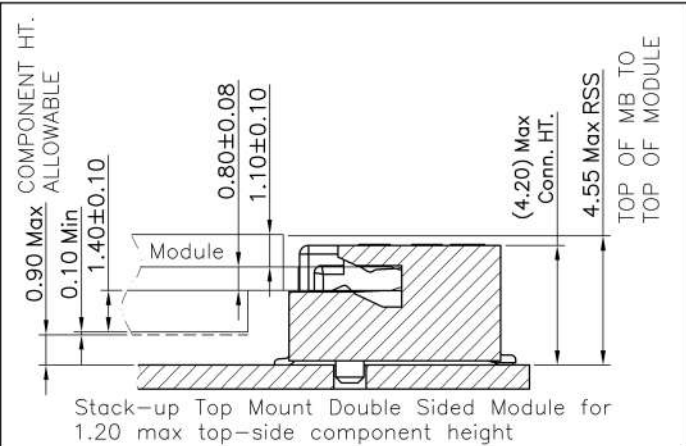
FINISHED PRODUCT

- CUSTOMER CODE
- PACKING TYPE
- PRODUCT SERIAL NUMBER
- P:HF COMPLIANT
- TYPE SERIAL NUMBER
- PRODUCT TYPE

GENERAL TOLERANCES UNLESS SPECIFIED		PART NO.	LOTES			
X ± 0.35	X° ± 3°	SEE TABLE				
.XX ± 0.25	X° ± 2°	APPROVED BY	TITLE 0.5 PITCH M.2 H4.2 (KEY A)			
.XXX ± 0.15	.XX° ± 1°	Barney 11/18'14				
CUSTOMER DRAWING		CHECKED BY	DWG NO. AP-APCI0106			
		Vito 11/18'14				
SIZE	UNITS	DRAWN BY		SHEET	SCALE	REV
A4	MM [INCH]	Lxh 11/18'14		2 / 5	4:1	1



Assembly stack height schematic diagram

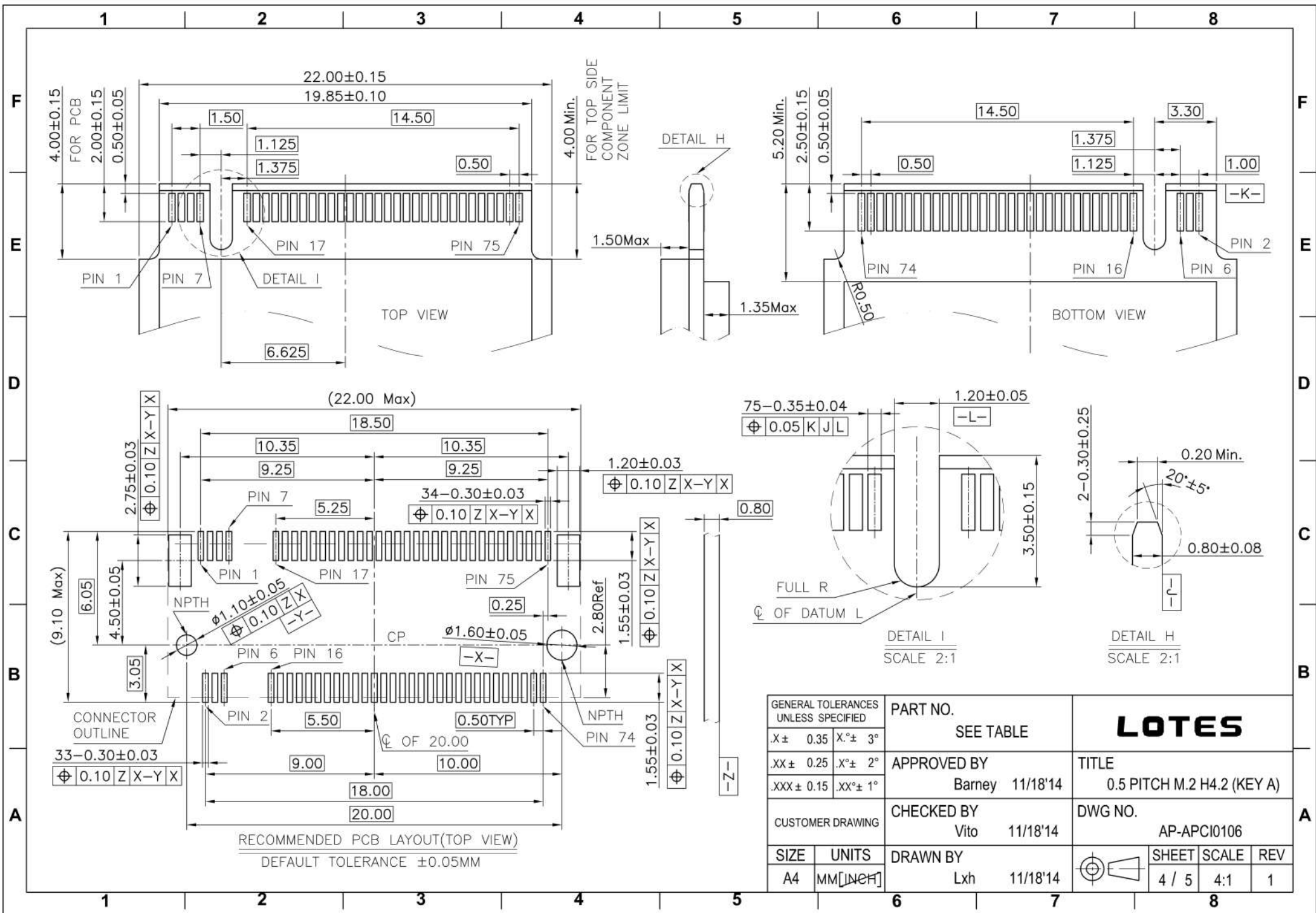


HOW TO MATE AND EXTRACT

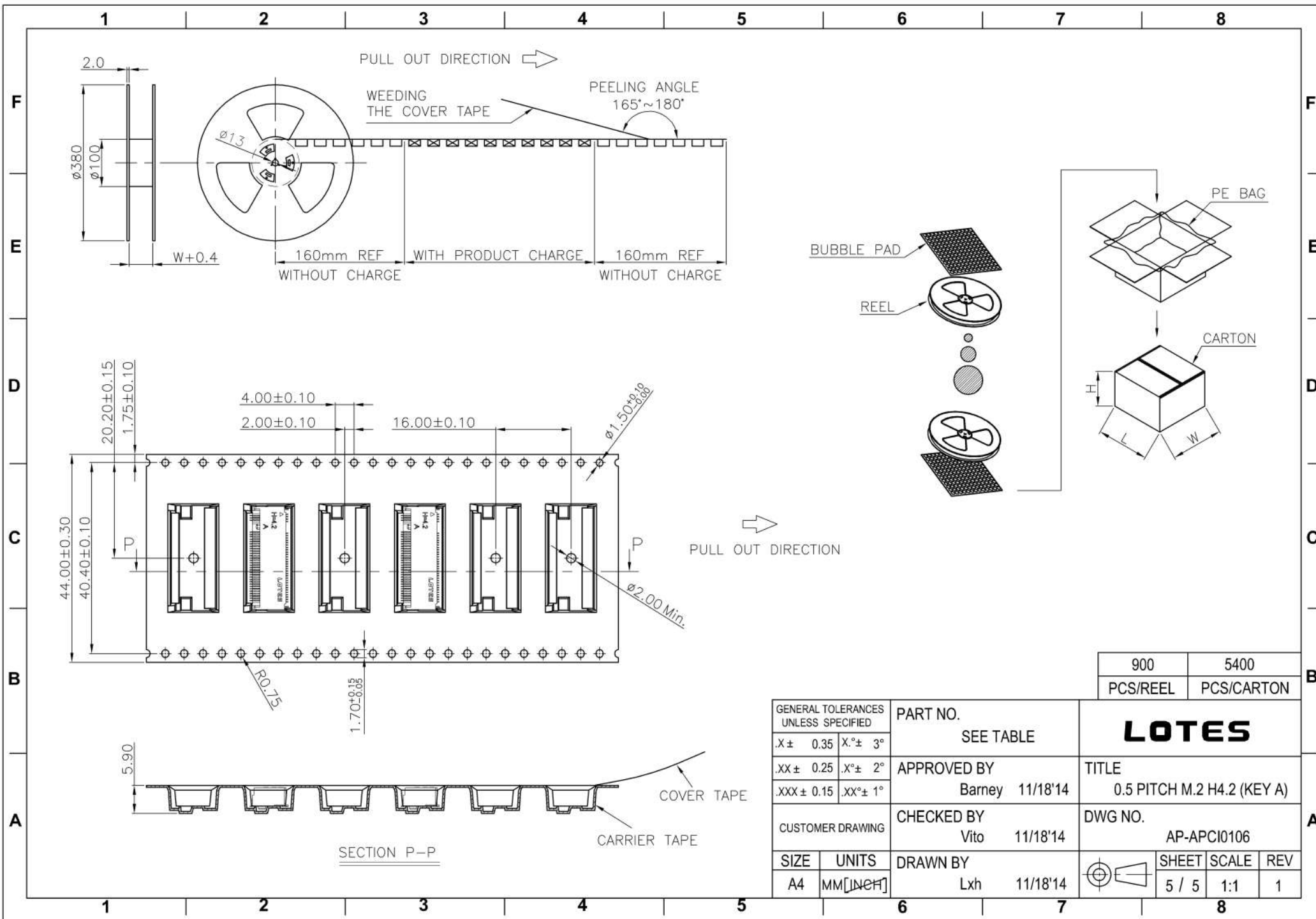
- MATE: ① → ④
- EXTRACT: ⑤ → ⑥

NOTE: Mating force will generate from step 3 to step 4.

GENERAL TOLERANCES UNLESS SPECIFIED		PART NO. SEE TABLE	LOTES			
X ± 0.35	X° ± 3°					
.XX ± 0.25	.X° ± 2°		APPROVED BY Barney 11/18'14	TITLE 0.5 PITCH M.2 H4.2 (KEY A)		
.XXX ± 0.15	.XX° ± 1°	CHECKED BY Vito 11/18'14	DWG NO. AP-APCI0106			
CUSTOMER DRAWING	SIZE A4	UNITS MM [INCH]	DRAWN BY Lxh 11/18'14	SHEET 3 / 5	SCALE 4:1	REV 1



GENERAL TOLERANCES UNLESS SPECIFIED		PART NO. SEE TABLE	LOTES					
X± 0.35	X.°± 3°					APPROVED BY Barney 11/18'14	TITLE 0.5 PITCH M.2 H4.2 (KEY A)	
.XX± 0.25	.X°± 2°					CHECKED BY Vito 11/18'14	DWG NO. AP-APCI0106	
XXX± 0.15	.XX°± 1°	CUSTOMER DRAWING	DRAWN BY Lxh 11/18'14	SHEET SCALE REV 4 / 5 4:1 1				



900	5400
PCS/REEL	PCS/CARTON

GENERAL TOLERANCES UNLESS SPECIFIED		PART NO. SEE TABLE	LOTES		
X ± 0.35	X.° ± 3°				
.XX ± 0.25	.X.° ± 2°	APPROVED BY Barney 11/18'14	TITLE 0.5 PITCH M.2 H4.2 (KEY A)		
.XXX ± 0.15	.XX.° ± 1°	CHECKED BY Vito 11/18'14	DWG NO. AP-APCI0106		
CUSTOMER DRAWING		DRAWN BY Lxh 11/18'14	SHEET 5 / 5	SCALE 1:1	REV 1
SIZE A4	UNITS MM [INCH]				