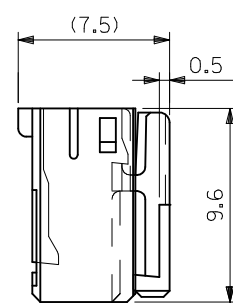
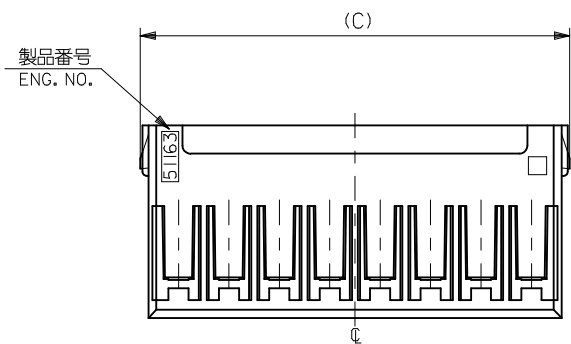


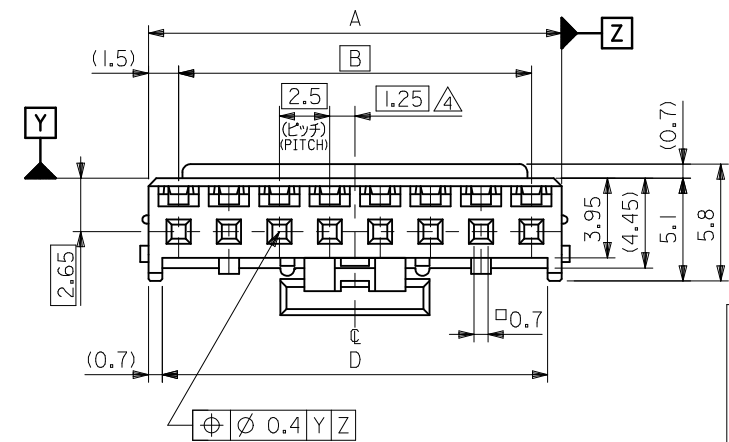
ターミナル及びリテーナー装着状態図
TERMINAL AND RETAINER ASSEMBLY DRAWING

注記 NOTES

- △ 適合ターミナル：50752-8*00
APPLICABLE TERMINAL : 50752-8*00
- △ 適合リテーナー：51164-**05
APPLICABLE RETAINER : 51164-**05
- 3. 嵌合相手：53375,53376,53388,53389,53426 シリーズ
MATE WITH : 53375,53376,53388,53389,53426 SERIES
- △ 偶数極の製品に適用。
APPLY EVEN CIRCUIT PRODUCTS.



3-15 極に適用
FOR 3-15 CKTS.

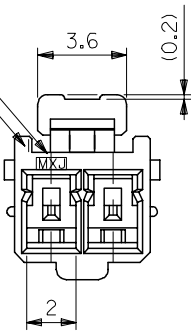


| | 青 BLUE | 赤 RED | 黒 BLACK | 白 NATURAL | COLOR | | | | | | | |
|------|-----------|----------|------------|--------------|-------|------|------------|--------------|--------------|--------------|--------------|------------|
| 12.5 | 7.4 | 5 | 36.6 | 38.8 | 35 | 38 | 51163-1504 | 51163-1502 | 51163-1501 | 51163-1500 | 15 | |
| 12.5 | | | 34.1 | 36.3 | 32.5 | 35.5 | -1404 | -1402 | -1401 | -1400 | 14 | |
| 12.5 | | | 31.6 | 33.8 | 30 | 33 | -1304 | -1302 | -1301 | -1300 | 13 | |
| 12.5 | | | 29.1 | 31.3 | 27.5 | 30.5 | -1204 | -1202 | -1201 | -1200 | 12 | |
| 12.5 | | | 26.6 | 28.8 | 25 | 28 | -1104 | -1102 | -1101 | -1100 | 11 | |
| 12.5 | | | 24.1 | 26.3 | 22.5 | 25.5 | -1004 | -1002 | -1001 | -1000 | 10 | |
| 12.5 | | | 21.6 | 23.8 | 20 | 23 | -0904 | -0902 | -0901 | -0900 | 9 | |
| 12.5 | | | 19.1 | 21.3 | 17.5 | 20.5 | -0804 | -0802 | -0801 | -0800 | 8 | |
| | | | 16.6 | 18.8 | 15 | 18 | -0704 | -0702 | -0701 | -0700 | 7 | |
| | | | 14.1 | 16.3 | 12.5 | 15.5 | -0604 | -0602 | -0601 | -0600 | 6 | |
| | | | 11.6 | 13.8 | 10 | 13 | -0504 | -0502 | -0501 | -0500 | 5 | |
| | 7.4 | 5 | 9.1 | 11.3 | 7.5 | 10.5 | -0404 | -0402 | -0401 | -0400 | 4 | |
| | 5 | 3 | 6.6 | 8.8 | 5 | 8 | 51163-0304 | 51163-0302 | 51163-0301 | 51163-0300 | 3 | |
| | G | F | E | D | (C) | B | A | MATERIAL NO. | MATERIAL NO. | MATERIAL NO. | MATERIAL NO. | NO. OF CKT |

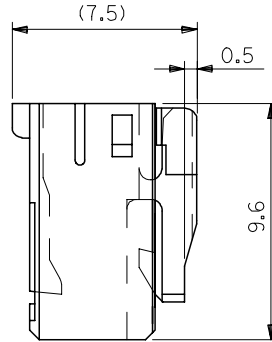
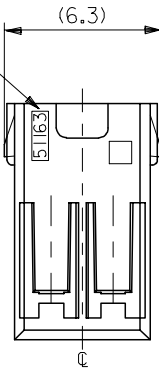
| | | | | | | | | | |
|---|---|--|--|--|--|---|-------------------------------------|--|---------------------|
| REVISED EC NO: J2005-1394 DRWN: JSASAMOR CHKDK: TOJO APPR: NUKITA 2004/11/09 2004/11/10 2004/11/18 | GENERAL TOLERANCES (UNLESS SPECIFIED) | | DIMENSION STYLE MM ONLY | | SCALE 4:1 | DESIGN UNITS METRIC | THIRD ANGLE PROJECTION | | |
| | 10 UNDER ±0.2 10 OVER 30 UNDER ±0.25 30 OVER ±0.3 | ANGULAR ±3 ° DRAFT WHERE APPLICABLE MUST REMAIN WITHIN DIMENSIONS | | DRAWN BY J. SASAMO DATE 2004/8/31 | CHECKED BY K. TOJO DATE 2004/8/31 | TITLE 2.5 WIRE TO BORAD CONN. HOUSING (POSITIVE LOCK) WITH RETAINER | | | |
| | APPROVED BY N. UKITA DATE 2004/8/31 | | MATERIAL NO. 51163-**0* | | MOLEX INCORPORATED | | DOCUMENT NO. SD-51163-001 | | SHEET NO. 1 OF 2 |
| | SIZE A3 | | THIS DRAWING CONTAINS INFORMATION THAT IS PROPRIETARY TO MOLEX INCORPORATED AND SHOULD NOT BE USED WITHOUT WRITTEN PERMISSION | | | | | | |

10 9 8 7 6 5 4 3 2 1

トレードマーク
TRADE MARK
回路番号 1
CIRCUIT NO.1

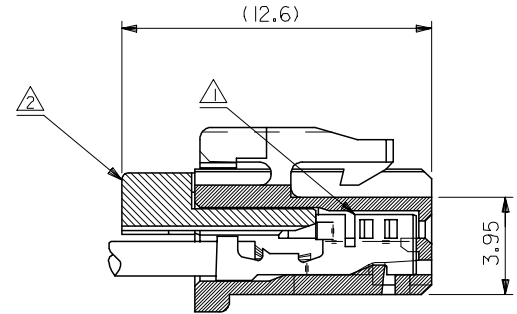


製品番号
ENG. NO.

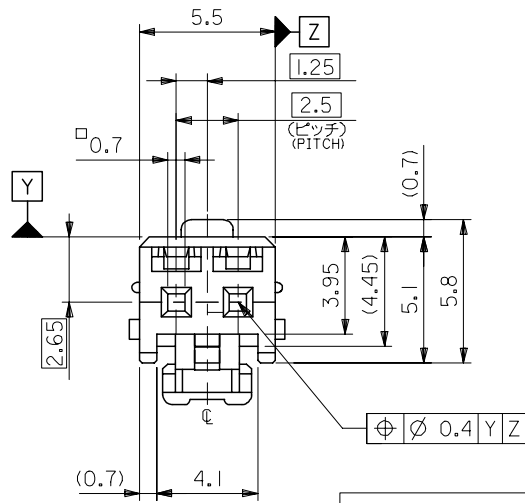


注記 NOTES

- △ 適合ターミナル : 50752-8*00
APPLICABLE TERMINAL : 50752-8*00
- △ 適合リテーナー : 51164-***05
APPLICABLE RETAINER : 51164-***05
- 3. 嵌合相手 : 53375,53426 シリーズ
MATE WITH : 53375,53426 SERIES



ターミナル及びリテーナー装着状態図
TERMINAL AND RETAINER ASSEMBLY DRAWING



2 極に適用
FOR 2 CKTS.

| | | | |
|--------------------|---------|--------------|-------------|
| 青 | BLUE | 51163-0204 | 2 |
| 赤 | RED | 51163-0202 | |
| 黒 | BLACK | 51163-0201 | |
| 白 | NATURAL | 51163-0200 | |
| COLOR MATERIAL NO. | | MATERIAL NO. | NO. OF CKT. |

MATERIAL
PBTP, UL94V-0
SEE CHART

| | | | | | | | | |
|--|---------------------------------------|------------|-----------------------------|---|--|------------------------|------------------------|--|
| REVISED EC NO: J2005-1394 DRWN: SASAMOR 2004/11/09 CHKDK: TOJO 2004/11/10 APPR: NUKITA 2004/11/18 A | GENERAL TOLERANCES (UNLESS SPECIFIED) | | DIMENSION STYLE MM ONLY | | SCALE 5:1 | DESIGN UNITS METRIC | THIRD ANGLE PROJECTION | |
| | 10 UNDER | ±0.2 | DRAWN BY J. SASAMO | DATE 2004/8/31 | TITLE 2.5 WIRE TO BORAD CONN. HOUSING (POSITIVE LOCK) WITH RETAINER | | | |
| | 10 OVER 30 UNDER | ±0.25 | CHECKED BY K. TOJO | DATE 2004/8/31 | | | | |
| | 30 OVER | ±0.3 | APPROVED BY N. UKITA | DATE 2004/8/31 | MOLEX INCORPORATED DOCUMENT NO. SD-51163-001 | | | |
| | ANGULAR | ±3 ° | MATERIAL NO. 51163-***0* | DATE | | | | |
| DRAFT WHERE APPLICABLE MUST REMAIN WITHIN DIMENSIONS | | SIZE A3 | | THIS DRAWING CONTAINS INFORMATION THAT IS PROPRIETARY TO MOLEX INCORPORATED AND SHOULD NOT BE USED WITHOUT WRITTEN PERMISSION | | | | |