

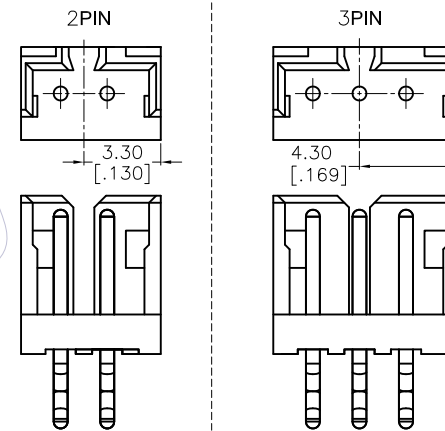
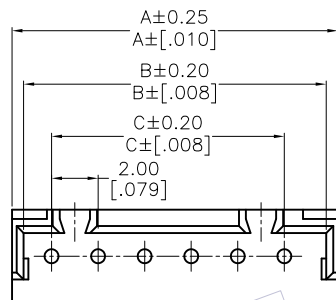
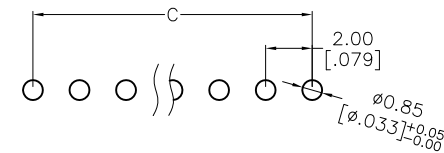
# HSF

**NOTES:**

Current Rating:1.0A AMP  
 Contact Resistance:20milliohm Max  
 Withstand Voltage:250V AC/Minute  
 Insulation Resistance:500Megohm Min  
 Operation Temperature:-25°C to +85°C

Housing Material:PA6T(UL94V-0)  
 Contact Material:Brass  
 Contact plating;Sn over Ni Plating

RECOMMENDED PCB LAYOUT  
 TOLERANCE IS ±0.05



## Ordering Information

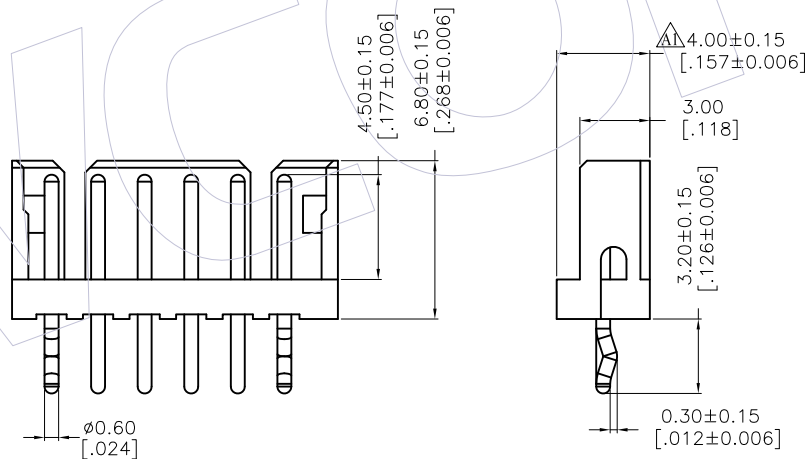
WF2006- WS XX X T 1

Terminal shape:  
WS:Wafer 180°DIP


NO.of Pins :  
2P~15P

Packing:  
T=Tube

Color:  
E=Beige



Circuits	Part No.	Dimensions		
		A	B	C
2	WF2006-WS02X01	6.00[.236]	5.00[.197]	2.00[.079]
3	WF2006-WS03X01	8.00[.315]	7.00[.276]	4.00[.157]
4	WF2006-WS04X01	10.00[.394]	9.00[.354]	6.00[.236]
5	WF2006-WS05X01	12.00[.472]	11.00[.433]	8.00[.315]
6	WF2006-WS06X01	14.00[.551]	13.00[.512]	10.00[.394]
7	WF2006-WS07X01	16.00[.630]	15.00[.591]	12.00[.472]
8	WF2006-WS08X01	18.00[.709]	17.00[.669]	14.00[.551]
9	WF2006-WS09X01	20.00[.787]	19.00[.748]	16.00[.630]
10	WF2006-WS10X01	22.00[.866]	21.00[.827]	18.00[.709]
11	WF2006-WS11X01	24.00[.945]	23.00[.906]	20.00[.787]
12	WF2006-WS12X01	26.00[1.024]	25.00[.984]	22.00[.866]
13	WF2006-WS13X01	28.00[1.102]	27.00[1.063]	24.00[.945]
14	WF2006-WS14X01	30.00[1.181]	29.00[1.142]	26.00[1.024]
15	WF2006-WS15X01	32.00[1.260]	31.00[1.220]	28.00[1.102]

REV		DATE	MODIFICATION DESCRIPTION	CHANGE	OPERATION	DRAW	DATE	SCALE	PART NO.	 Http: www.wcon.com WCON-Dongguan WCON-Kunshan Tel: +86 769 85358920 Fax: +86 769 85358915 E-mail: sales@wcon.com
		A1	2014.11.25	Modify Drawing(3.60→4.00)	YNWE	X.X	2013.05.13	1:1	WF2006-WSXXXT1	
		A0	2013.05.13	NEW	-	X.XX		mm inch	TITLE: 2.00mm WTB WAFER 180°DIP	
						X.XXX		A4	Customer NO.	
						Angle		1/1		
						± 3'				
						DIM		PROJ.		
						TOL				