

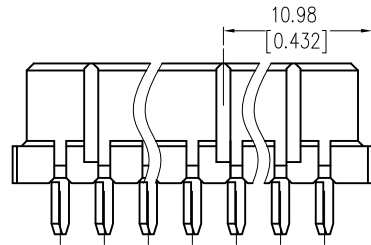
HSF

NOTES:

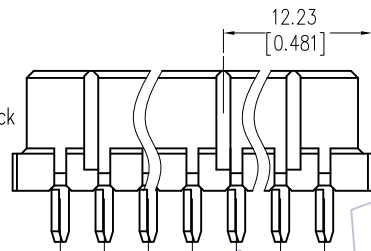
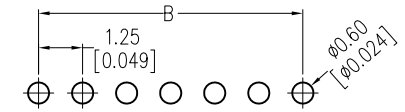
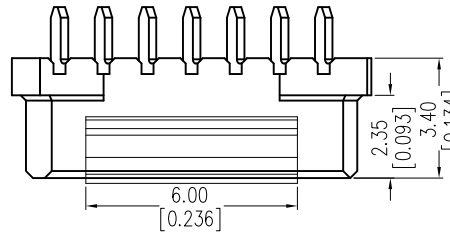
Voltage Rating: 50V AC/DC
 Current Raing: 0.5AMP
 Contact Resistance: 20mΩ max
 Withstand Voltage: 500V AC/Minute
 Insulation Resistance: 500MΩ min
 Operation Temperature: -40°C to +105°C

Contact Material: Phosphor Bronze
 Contact Plating: 100~200u" Tin Plated Over
 50~80u" Nickel
 Insulator Material: PA9T+33%GF UL94V-0 Black

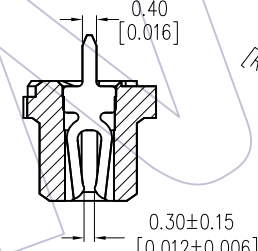
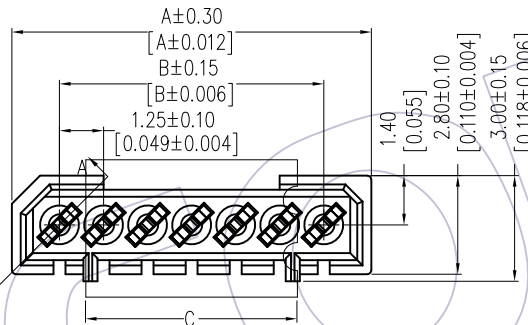
Recommended P.C.B Layout (Top Side)
 (PCB BOARD TOLERANCE ±0.05)



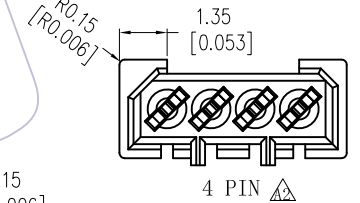
17 PIN



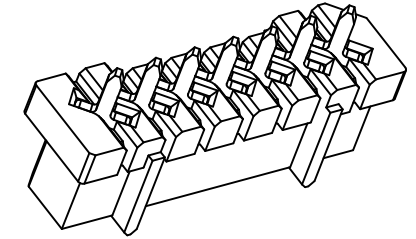
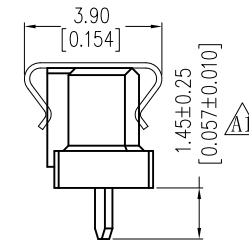
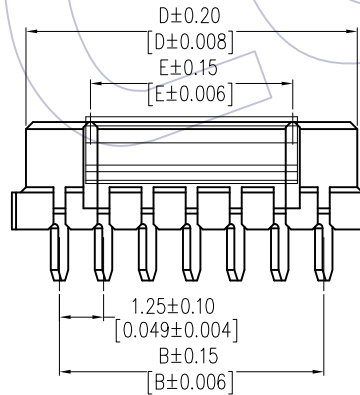
20 PIN



SECTION A-A



4 PIN



Ordering Information

3652- S XXX - 034 XX R04

- | | | |
|-------------|-------------------|-------------|
| No.of Pins | Plating | Packing |
| 004: 04 Pin | G0=Gold Flash | R=Tape&Reel |
| 005: 05 Pin | G3=10u"Gold | |
| 006: 06 Pin | G4=15u"Gold | |
| 007: 07 Pin | G5=30u"Gold | |
| 008: 08 Pin | S0=Gold Flash/Tin | |
| 010: 10 Pin | S3=10u"Gold/Tin | |
| 017: 17 Pin | S4=15u"Gold/Tin | |
| 020: 20 Pin | S5=30u"Gold/Tin | |
| | SN=Tin | |

Pos	PART NO.	DIM C
4-7PIN	CAP2521-M201	6.00
17-20PIN	CAP2521-M201	6.00

21.99	25.65	23.75	26.45	20
18.24	21.90	20.00	22.70	17
9.49	13.15	11.25	13.95	10
6.99	10.65	8.75	11.45	8
5.74	9.40	7.50	10.20	7
4.49	8.15	6.25	8.95	6
3.24	6.90	5.00	7.70	5
1.99	5.65	3.75	6.45	4
E	D	B	A	PIN数

REV	DATE	MODIFICATION DESCRIPTION	CHANGE	OPERATION	DRAW	DATE	SCALE	FIT	PART NO.
A2	2017.12.20	Modify	----	X.X	Ding	2017.12.20	UNIT	mm	3652-SXXX-034XXR04
A1	2017.07.11	DIP: 1.30±0.25 → 1.45±0.25	----	X.XX	CHECK	DATE	SIZE	A4	TITLE:
A0	2016.10.20	NEW	----	X.XXX	APPROVE	DATE	SHEET	1/1	1.25mm BTB FEMALE, 180°, DIP, H=3.4 W/O POST
				Angle			PROJ.		Customer NO.
				DIM					
				TOL					

WCON
 Http: www.wcon.com

WCON-Dongguan
 Tel: +86 769 85358920
 Fax: +86 769 85358915
 E-mail: sales@wcon.com

WCON-Kunshan
 Tel: +86 512 57468408
 Fax: +86 512 57468468
 E-mail: salesks@wcon.com