

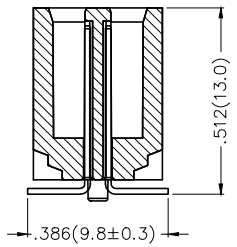
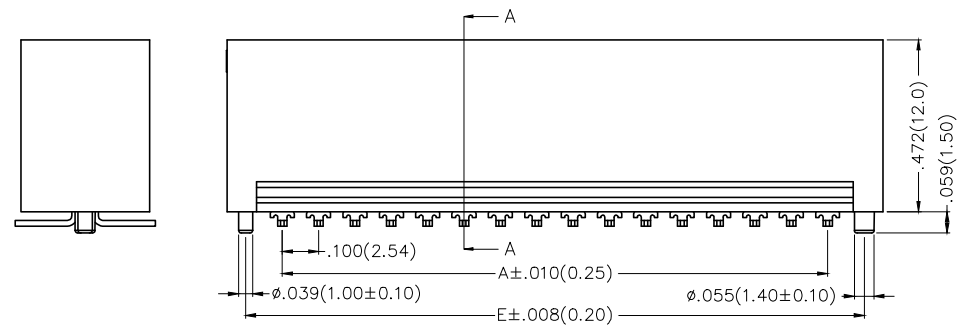
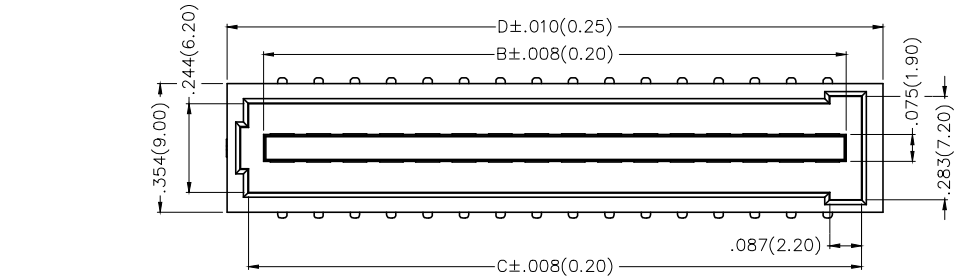
1 2 3 4 5 6 7 8

REV	LOCATIONS	DESCRIPTION	DATE	REVISER	APPD

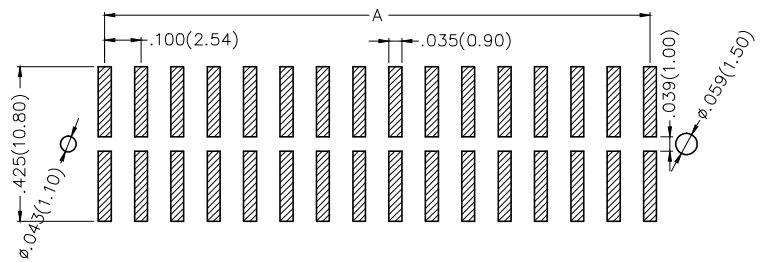
SPECIFICATIONS

Electrical  
 Current Rating: 3A AC(rms)/DC  
 Voltage Rating: 250V AC(rms)/DC  
 Contact Resistance: 30 mΩ Max.  
 Insulation Resistance: 1000 MΩ Min.  
 Withstanding Voltage: 500V AC r.m.s  
 Temperature Range—Operating: -25°C~+85°C

Material and Plating  
 Housing: PA9T (UL 94V-0)  
 Contacts: Brass/ Gold plated



Section A-A



Recommended P.C.Board Layout  
 General Tolerances: ±0.05mm

Ordering Information

FBB 254 01 — M XX S 1 XX 5 K6 K  
 1 2 3 4 5 6 7 8 9 10 11

1 Category FBB—Board to Board	2 Series Number 254—Pitch 2.54mm	3 Distinction No. 01	4 Type M—Male	5 Circuits XX	6 Entry Angle S—180° Vertical
7 Plating 1—Gold plated	8 Thickness of Plating 00—Gold flash 01—1μ" Custom plate available	9 Material—Resin 5—PA9T	10 Color—Resin K6—Black	11 Packaging K—Tray	

<p>THIRD ANGLE PROJECTION</p>	GENERAL TOLERANCES (UNLESS SPECIFIED)		APPROVE BY FRANK	DATE 21/DEC/18	PART NO. FBB25401—MXXS1XX5K6K	ITEM NO. FBB25401	<p>Leader Of Industry</p>
	X.±.012(0.30)	X.±5'	CHECKED BY CHERRY	DATE 21/DEC/18	TITLE Board to Board Pitch 2mm 180° Vertical (SMT)		
DESIGN UNITS Inch (metric)	X.X±.008(0.20)	.X'±2'	DRAWN BY KATE	DATE 21/DEC/18	THIS DRAWING CONTAINS INFORMATION THAT IS PROPRIETARY TO TXGA INDUSTRIAL ELECTRONICS(S.Z)CO.,LTD AND SHOULD NOT BE USED WITHOUT WRITTEN PERMISSION		
SCALE 5:1	SIZE A4	X.XX±.006(0.15)	.XX'±1'				
		X.XXX±.004(0.10)	.XXX±0.5'				

1 2 3 4 5 6 7 8

1 2 3 4 5 6 7 8

REV	LOCATIONS	DESCRIPTION	DATE	REVISER	APPD

A

A

B

B

C

C

D

D



E

E

F

F

Circuits (n)	Part No.	Dimensions(in/mm)				
		A	B	C	D	E
20	FBB25401-M20S1XX5K6K	.900(22.86)	1.003(25.48)	1.086(27.58)	1.204(30.58)	1.100(27.94)
26	FBB25401-M26S1XX5K6K	1.200(30.48)	1.303(33.10)	1.386(35.20)	1.504(38.20)	1.400(35.56)
30	FBB25401-M30S1XX5K6K	1.400(35.56)	1.503(38.18)	1.586(40.28)	1.704(43.28)	1.600(40.64)
32	FBB25401-M32S1XX5K6K	1.500(38.10)	1.603(40.72)	1.686(42.82)	1.804(45.82)	1.700(43.18)
36	FBB25401-M36S1XX5K6K	1.700(43.18)	1.803(45.80)	1.886(47.90)	2.004(50.90)	1.900(48.26)

 THIRD ANGLE PROJECTION	GENERAL TOLERANCES (UNLESS SPECIFIED)		APPROVE BY FRANK	DATE 21/DEC/18	PART NO. FBB25401-MXXS1XX5K6K	ITEM NO. FBB25401	 Leader Of Industry	
	X.±.012(0.30)	X.±5'	CHECKED BY CHERRY	DATE 21/DEC/18	TITLE Board to Board Pitch 2mm 180° Vertical (SMT)			REV 0
	DESIGN UNITS Inch (metric)	X.X±.008(0.20)	.X'±2'	DRAWN BY KATE	DATE 21/DEC/18	THIS DRAWING CONTAINS INFORMATION THAT IS PROPRIETARY TO TXGA INDUSTRIAL ELECTRONICS(S.Z)CO.,LTD AND SHOULD NOT BE USED WITHOUT WRITTEN PERMISSION		
	SCALE 5:1	SIZE A4	X.XX±.006(0.15)	.XX'±1'	X.XXX±.004(0.10)	.XXX'±0.5'		

1 2 3 4 5 6 7 8