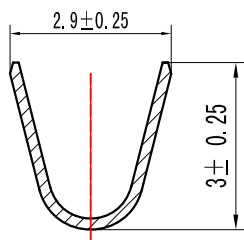


SPECIFICATIONS

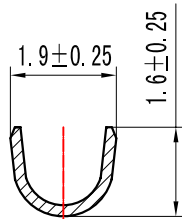
- 1.Voltage rating: 250V AC, DC
- 2.Current rating: 3A, AC, DC
- 3.Withstanding Voltage: 1000V AC/minute
- 4.Insulation resistance:1000M min
- 5.Temperature range: -25 ° C~+85 ° C
- 6.Contact resistance: 20m max

TERMINAL

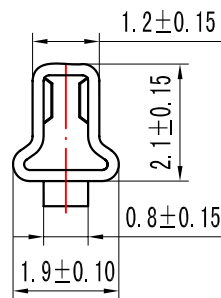
Material: Phosphor Bronze
 Finish: Tin Plated
 Applicable wire: AWG#22-#28
 Used in :P2508 SERIES HOUSING
 Qty/Reel: 7000PCS
 Part No.: T2508PS-2



A-A



B-B



C-C

| | | | | | | | | | | | |
|----|--------------|--|------|----------------------------|-------|-------|--------|---------------------------------------------------------------|--------------|-------------------------------|----------|
| | | | | TOLERANCE UNLESS OTHERWISE | | DRAWN | CK tan | XFCN 兴飞连接器有限公司 CONNECTORS XFCN CONNECTORS CO., LTD. | | SHEET | 1/1 |
| | | | | X. | ±0.30 | X° | ±5° | | | CHKD | DATE |
| | | | | .X | ±0.20 | .X° | ±2° | APPD | PRODUCT NAME | 2.50mm Crimp Style Connectors | |
| | | | | .XX | ±0.08 | .XX° | ±1° | VIEW | PART. NO. | SCALE | 1:1 |
| | | | | .XXX | ±0.03 | .XXX° | ±0.5° | | | T2508PS-2 | DWG. NO. |
| AO | MODIFICATION | | DRAW | DATE | | | | | | | |