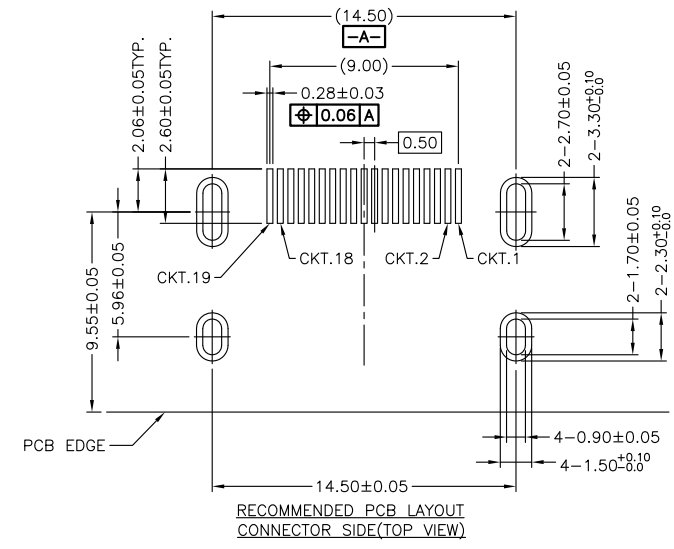
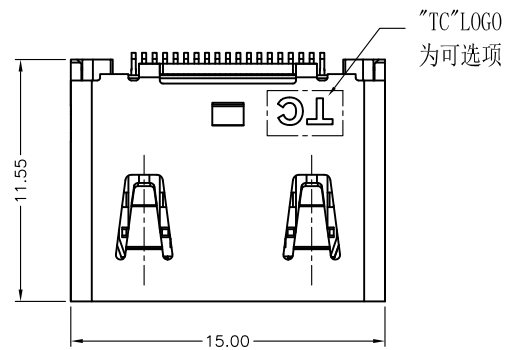
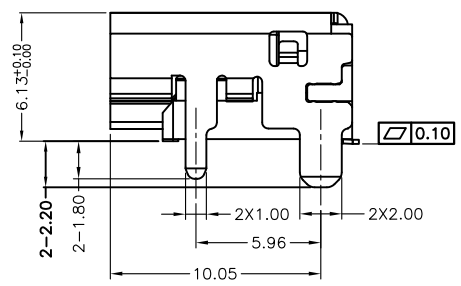
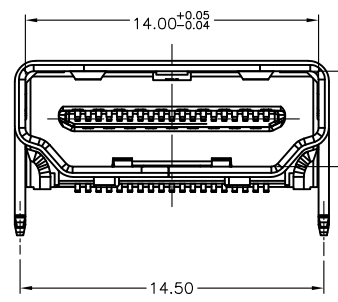


THE PART MEETS TECONN "GP001" COMPLIANCE NEW REV.



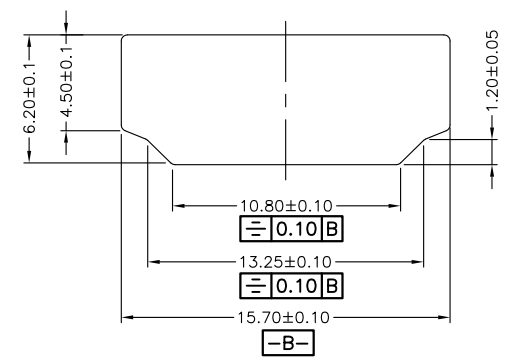
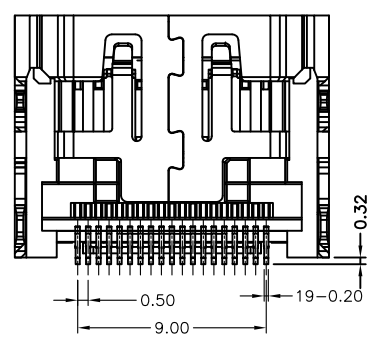
- NOTES:
- MATERIAL AND FINISH SEE THE TABLE.
 - MECHANICAL CHARACTERISTICS
 INSERTION FORCE: 44.1N MAX
 EXTRACTION FORCE: 9.8N MIN, 39.2N MAX
 MATING CYCLE: 10000 CYCLES
 - ELECTRICAL CHARACTERISTICS
 RATING CURRENT: 0.5A
 RATING VOLTAGE: 40V
 CONTACT RESISTANCE: 10 MILLOHMS OHMS MAX (EXCLUDING CONDUCTOR RESISTANCE)
 INSULATION RESISTANCE:
 a, UNMATED: 100M OHMS MIN AT 500 VDC
 b, MATED: 10M OHMS MIN AT 150 VDC
 DIELECTRIC WITHSTANDING VOLTAGE:
 500V AC/1MINUTE
 OPERATING TEMPERATURE: -20°C---+85°C
 STORAGE TEMPERATURE: -20°C---+65°C



A111926-X-XX-R

Form: A:ASS'y
 Series: 11:HDMI-A/F
 Number of POS.: 19
 Follow NO.: 26
 difference type: A:With "TC" Logo, C:Without "TC" Logo

Packing type: R: reel
 Contact area plating:
 01: Au 1u"
 03: Au 3u"
 05: Au 5u"
 15: Au 15u"
 30: Au 30u"



Item	Title	Material	Dispose	Remark
1	Terminal	Copper Alloy	Mating Area: See P/N Solder Tails: Sn	t=0.20
2	Insert Molding	LCP	UL94V-0	Black
3	Shell	Copper Alloy	Ni: 50u" Min.	t=0.50

X. ± 0.30	APPD: Lebon Lee	TITLE: HDMI-A/F CONN. SMT TYPE (INSERTMOLDING)	
.X ± 0.25	CHKD: /	PART NO: A111926-A(C)-XX-R	
.XX ± 0.20	DR: Cola Lee	DWG NO: C-A111926-A(C)-XX-R	
.XXX ±			
X' ± 2'			
.X' ± 1.5'			
	UNITS: mm	SCALE: 1:1	CUSTOMER DRAWING SHEET: 10F1 REV: A

A	TE2019-0125	New Drawing	Cola Lee	2019-07-05
REV	ECN NO	DESCRIPTION	DESIGN	DATE

RECOMMENDED PANEL CUT OUT DIMENSION