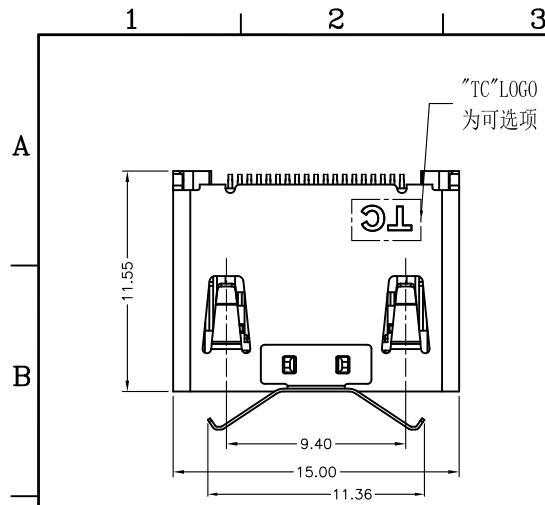
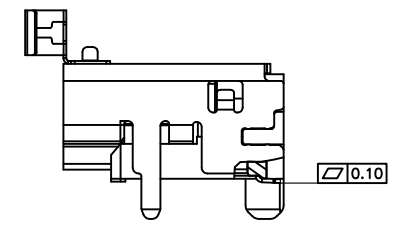
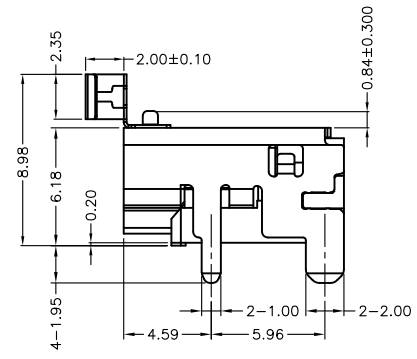
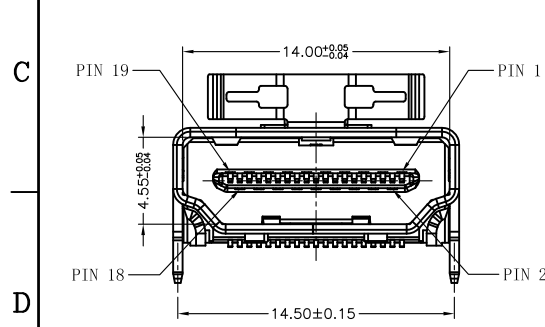
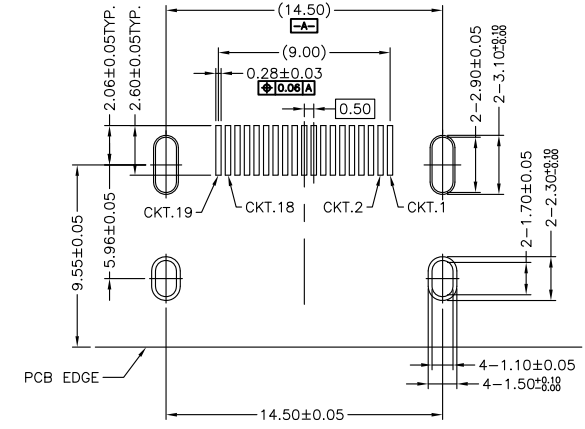


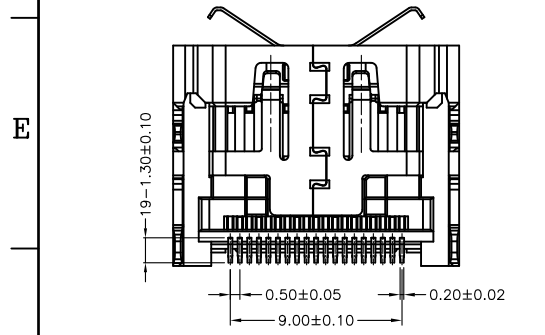
符合泰康“环境相关物质管理规定GP001”



Part NO. information
A111922-X-XX-X
 Form A: ASS'y series 11: HDMI-A/F packing T: tray R: tape&reel
 number of POS.: 19pin Contact area
 follow NO.: 10 01: Au 1u" 03: Au 3u" 05: Au 5u" 10: Au 10u" 15: Au 15u" 30: Au 30u"
 difference type:
 2: shell with "tc" logo
 3: shell without logo



Notes:
 1. Material and finish see the table.
 2. Mechanical characteristics
 Insertion force: 44.1N max
 Extraction force: 9.8N min, 39.2N max
 Mating cycle: 10000 cycles
 3. Electrical characteristics
 Rating current: 0.5A
 Rating voltage: 40V
 Contact resistance: 10 Milliohms max (Excluding conductor resistance)
 Insulation resistance:
 a, Unmated: 100M ohms min at 500 VDC
 b, Mated: 10M ohms min at 150 VDC
 Dielectric withstanding voltage:
 500V AC/1minute
 Operating temperature: -20°C---+85°C
 Storage temperature: -20°C---+65°C



B	TE2013-0154	图面有误	2013.04.17
A	TE2013-0001	初版发行	2013.01.02
REV	ECN NO	DESCRIPTION	DATE

04	shrapnel	K111910-J-00-A	SUS304, T=0.15		1
03	contact	T111922-A-XX-A	C2680, T=0.20	gold plating on contact area see part no. 80u" min matte tin plated on solder tails 50u" min. nickel under plated over all	1set
02	shell	K111922-3-00-A	C2680, T=0.50	solderable Ni 50u" min (without LOGO)	1
		K111922-2-00-A	C2680, T=0.50	solderable Ni 50u" min. (TC LOGO)	1
01	molding	B111922-A-XX-A	LCP 0194V-0	black	1

X.	± 0.30	APPD:	Knight	TITLE: HDMI-A/F smt type connector	
.X	± 0.25	CHKD:			
.XX	± 0.20				
.XXX	± 0.15		Knight		
X'	± 2'	DR:	Andrew	PART NO: A111922-2(3)-XX-X	
.X'	± 1.5'			DWG NO: C-A111922-2(3)-XX-X	
		UNITS:	SCALE:	DWG NO:	客户图
		mm	NONE	C-A111922-2(3)-XX-X	SHEET:10F1 REV:B