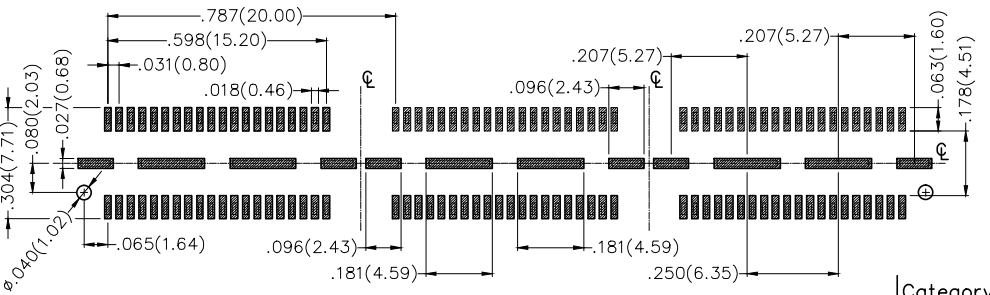
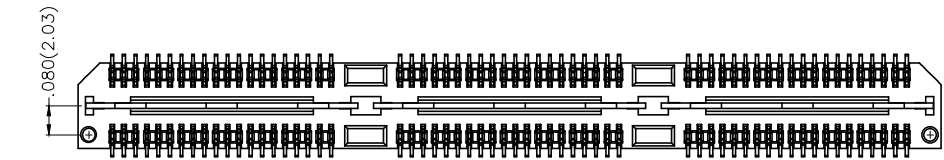
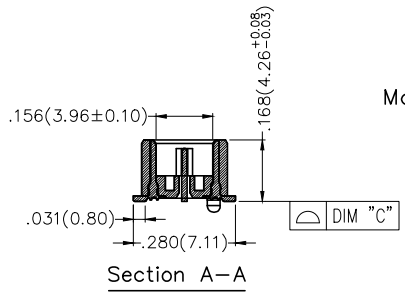
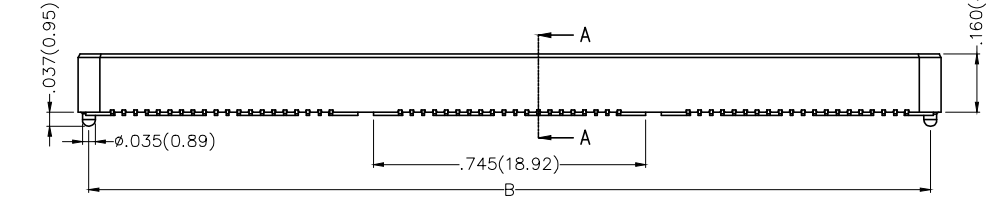
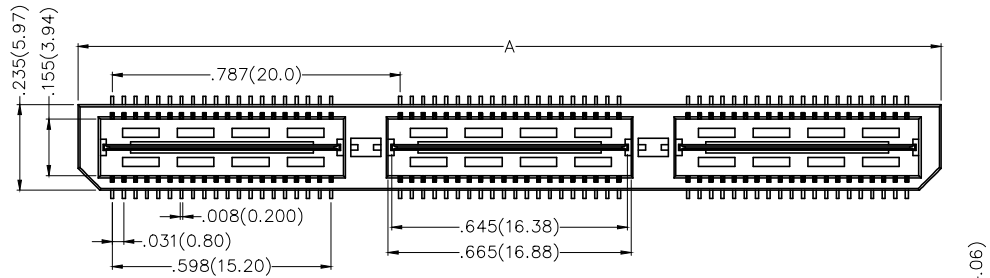


REV	LOCATIONS	DESCRIPTION	DATE	REVISER	APPD

SPECIFICATIONS

Electrical  
 Current Rating: 2.0A(Circuits), 16A(Ground)  
 (One pin power per row)  
 Voltage Rating: 225V AC(rms)/DC  
 Contact Resistance: 15 mΩ Max.  
 Insulation Resistance: 5000 MΩ Min.  
 Withstanding Voltage: 675V AC r.m.s  
 Temperature Range-Operating: -55°C~+85°C  
 Material and Plating  
 Housing: LCP (UL 94V-0)  
 Contacts: Phosphor Bronze/ Selective gold in contact area, matte tin on tail



Recommended P.C.Board Layout  
 General Tolerances: ±0.05mm

Circuits (n)	Part No.	Dimensions(in./mm)		
		A	B	C
40	FBB08004-M40S3XX3K6M	.787(20.00)	.728(18.48)	.004(0.10)
80	FBB08004-M80S3XX3K6M	1.575(40.00)	1.515(38.48)	.004(0.10)
120	FBB08004-M120S3XX3K6M	2.362(60.00)	2.302(58.48)	.006(0.15)

Ordering Information

FBB 080 04 — M XX S 3 XX 3 K6 M  
 1 2 3 4 5 6 7 8 9 10 11

1 Category	2 Series Number	3 Distinction No.	4 Type	5 Circuits	6 Entry Angle
FBB-Board to Board	080-Pitch0.80mm	04	M-Male	XX	S-180° Vertical
7 Plating	8 Thickness of Plating	9 Material-Resin	10 Color-Resin	11 Packaging	
3-Selective gold in contact area, tin on tail	03-3μ" 05-5μ" Custom plate available	3-LCP	K6-Black	M-Reel	

 THIRD ANGLE PROJECTION	GENERAL TOLERANCES (UNLESS SPECIFIED)		APPROVE BY	DATE	PART NO.	ITEM NO.	 Leader Of Industry
	X.±.012(0.30)	X.±5'	FRANK	21/DEC/18	FBB08004-MXXS3XX3K6M	FBB08004	
DESIGN UNITS Inch (metric)	X.X±.008(0.20)	X.±2'	CHECKED BY	DATE	TITLE		
SCALE	X.XX±.006(0.15)	.XX'±1'	CHERRY	21/DEC/18	Board to Board Pitch 0.8mm 180° Vertical (SMT)		REV 0 SHEET NO. 1/1
5:1	X.XXX±.004(0.10)	.XXX'±0.5'	DRAWN BY	DATE	THIS DRAWING CONTAINS INFORMATION THAT IS PROPRIETARY TO TXGA INDUSTRIAL ELECTRONICS(S.Z)CO.,LTD AND SHOULD NOT BE USED WITHOUT WRITTEN PERMISSION		
SIZE A4			KATE	21/DEC/18			