

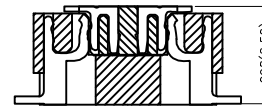
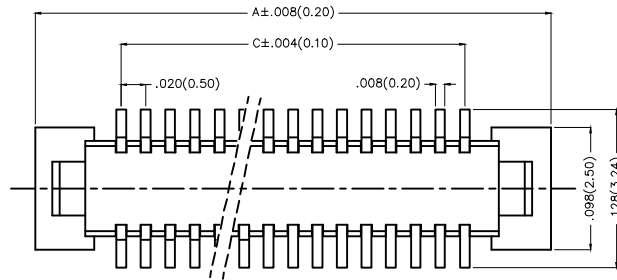
REV	LOCATIONS	DESCRIPTION	DATE	REVISER	APPD

**Electrical**

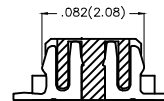
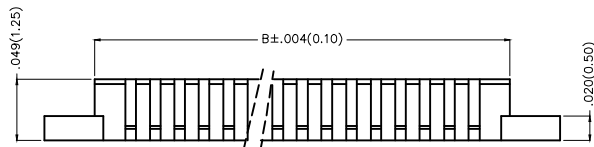
Current Rating: 0.5A AC(rms)/DC  
Voltage Rating: 50V AC(rms)/DC  
Contact Resistance: 40 mΩ Max  
Insulation Resistance: 500 MΩ MIN  
Withstanding Voltage: 250V AC r.m.s  
Temperature Range—Operating: -25°C~+85°C

**Material and Plating**

Housing: LCP( UL 94V-0)  
Contact Pin: Phosphor Bronze  
Plating: Gold Plated



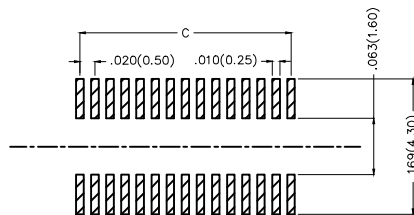
Mating Section




**Ordering Information**

FBB 050 01 — M XX S 1 XX 3 W5 M  
1 2 3 4 5 6 7 8 9 10 11

1 Category FBB—Board To Board	2 Series Number 050—Pitch0.50mm	3 Distinction No. 01	4 Type M—Male	5 Circuits XX	6 Entry Angle S—180° Vertical
7 Plating 1—Gold Plated	8 Thickness of Plating 00—Gold Flash 01—1μ"	9 Material—Resin 3—LCP	10 Plastic Color W5—White	11 Packaging M—Reel	





Recommended P.C.Board Layout

THIRD ANGLE PROJECTION	GENERAL TOLERANCES (UNLESS SPECIFIED)		APPROVE BY FRANK	DATE 26/SEPT/13	PART NO. FBB05001—MXXS1XX3W5M	TEM NO. FBB05001—M	 Leader Of Industry
	DESIGN UNITS Inch (metric)	X.±.012(0.30) X.±5° X.X±.008(0.20) .X'±2° X.XX±.006(0.15) .XX'±1° X.XXX±.004(0.10) .XXX'±0.5°	CHECKED BY CHERRY	DATE 26/SEPT/13	TITLE Board to Board Pitch 0.5mm 180° Vertical (SMT)		
SCALE 5:1	SIZE A4	DRAWN BY JACOB	DATE 26/SEPT/13	THIS DRAWING CONTAINS INFORMATION THAT IS PROPRIETARY TO TXGA INDUSTRIAL ELECTRONICS(S.Z.)CO.,LTD AND SHOULD NOT BE USED WITHOUT WRITTEN PERMISSION			

REV	LOCATIONS	DESCRIPTION	DATE	REVISER	APPD

Circuits (n)	Part No.	Dimensions(in/mm)		
		A	B	C
10	FBB05001-M10S1XX3W5M	.220(5.60)	.138(3.50)	.079(2.00)
12	FBB05001-M12S1XX3W5M	.240(6.10)	.157(4.00)	.098(2.50)
14	FBB05001-M14S1XX3W5M	.260(6.60)	.177(4.50)	.118(3.00)
16	FBB05001-M16S1XX3W5M	.280(7.10)	.197(5.00)	.138(3.50)
20	FBB05001-M20S1XX3W5M	.319(8.10)	.236(6.00)	.177(4.50)
22	FBB05001-M22S1XX3W5M	.339(8.60)	.256(6.50)	.197(5.00)
24	FBB05001-M24S1XX3W5M	.358(9.10)	.276(7.00)	.217(5.50)
30	FBB05001-M30S1XX3W5M	.417(10.60)	.335(8.50)	.276(7.00)
34	FBB05001-M34S1XX3W5M	.457(11.60)	.374(9.50)	.315(8.00)
40	FBB05001-M40S1XX3W5M	.516(13.10)	.433(11.00)	.374(9.50)
50	FBB05001-M50S1XX3W5M	.614(15.60)	.531(13.50)	.472(12.00)

 THIRD ANGLE PROJECTION	GENERAL TOLERANCES (UNLESS SPECIFIED)		APPROVE BY FRANK	DATE 26/SEPT/13	PART NO. FBB05001-MXXS1XX3W5M	TEM NO. FBB05001-M	 Leader Of Industry
	X.±.012(0.30)	X.±5'	CHECKED BY CHERRY	DATE 26/SEPT/13	TITLE Board to Board Pitch 0.5mm 180° Vertical (SMT)		
DESIGN UNITS Inch (metric)	X.XX±.008(0.20)	.X'±2'	DRAWN BY JACOB	DATE 26/SEPT/13	THIS DRAWING CONTAINS INFORMATION THAT IS PROPRIETARY TO TXGA INDUSTRIAL ELECTRONICS(S.Z)CO.,LTD AND SHOULD NOT BE USED WITHOUT WRITTEN PERMISSION		
SCALE 5:1	SIZE A4	X.XX±.006(0.15)					
		X.XXX±.004(0.10)					