

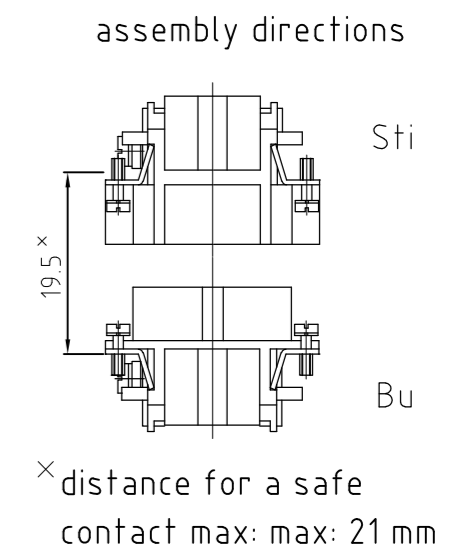
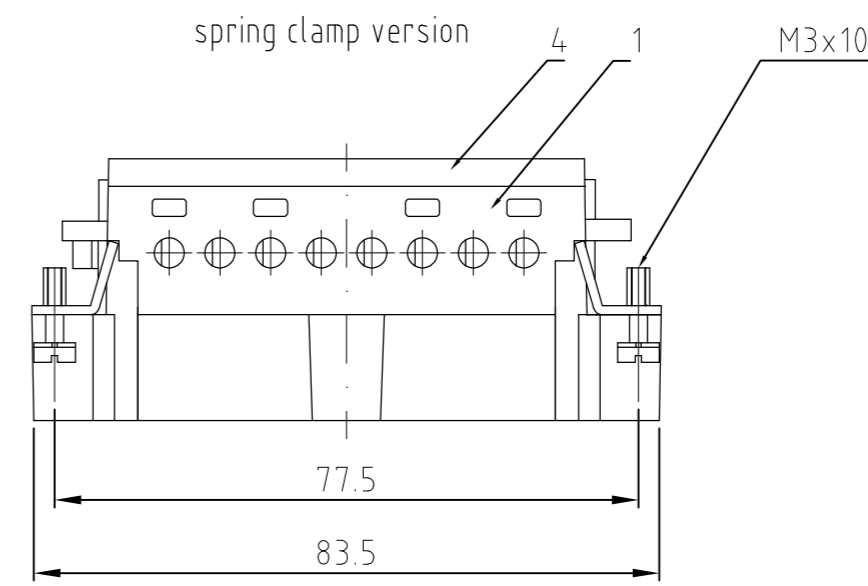
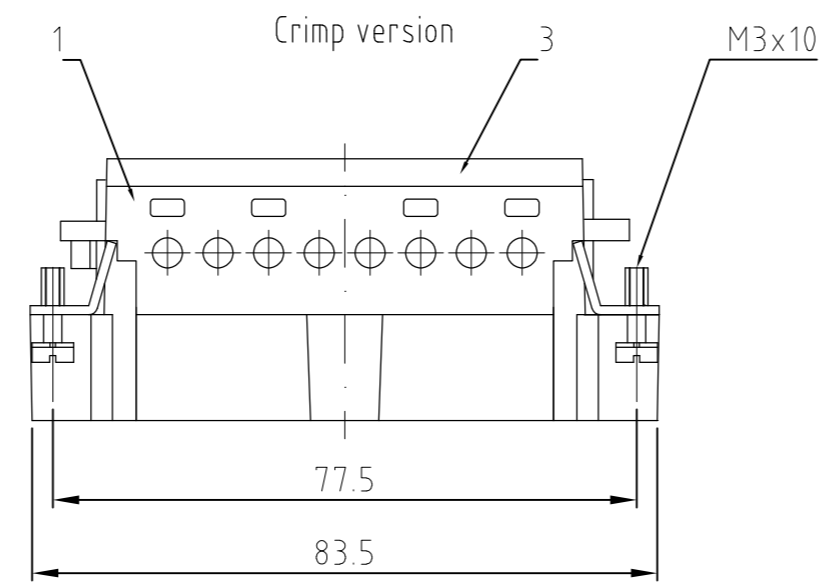
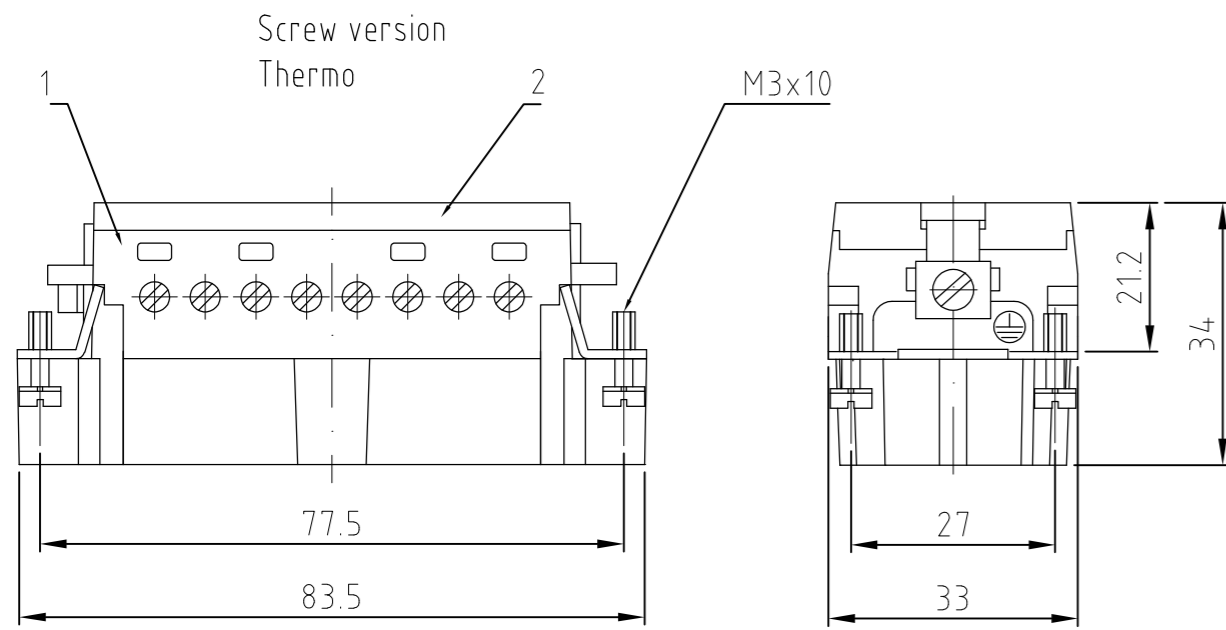
THIS DRAWING IS UNPUBLISHED.  
VERTRAULICHE UNVERÖFFENTLICHTE ZEICHNUNG

RELEASED FOR PUBLICATION  
FREI FUER VERÖFFENTLICHUNG

ALL RIGHTS RESERVED.  
ALLE RECHTE VORBEHALTEN

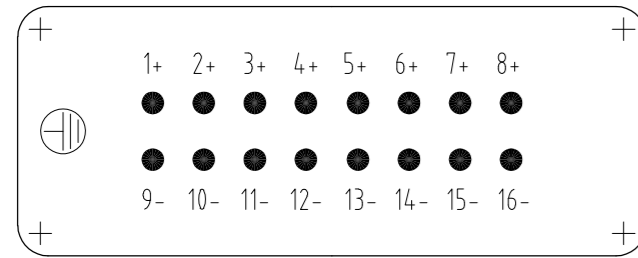
MATED WITH  
PASSEND ZU  
BG6

REVISIONS ÄNDERUNGEN		DATE	DWN	APVD
P	LTR	DESCRIPTION BESCHREIBUNG		
C10	ECR-17-000919		RG	MKO

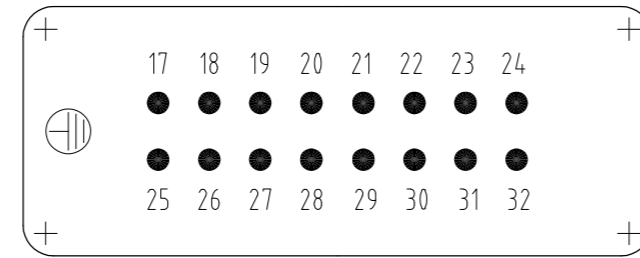


Contact arrangement view from termination side

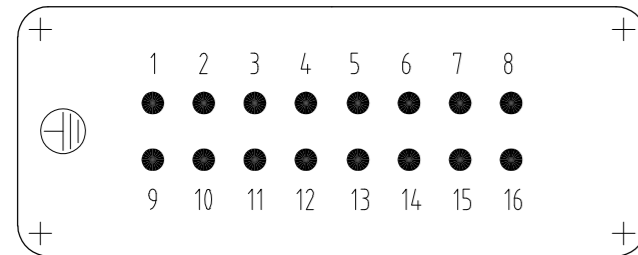
Printing 1-16 Thermo



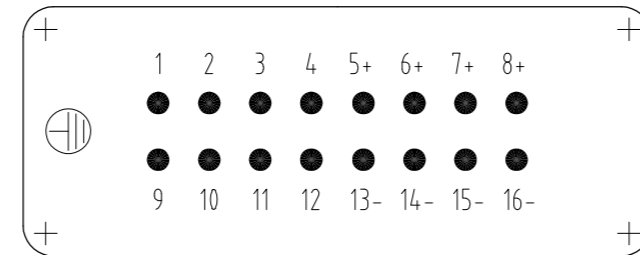
Printing 17-32 Screw



Printing 1-16 Screw



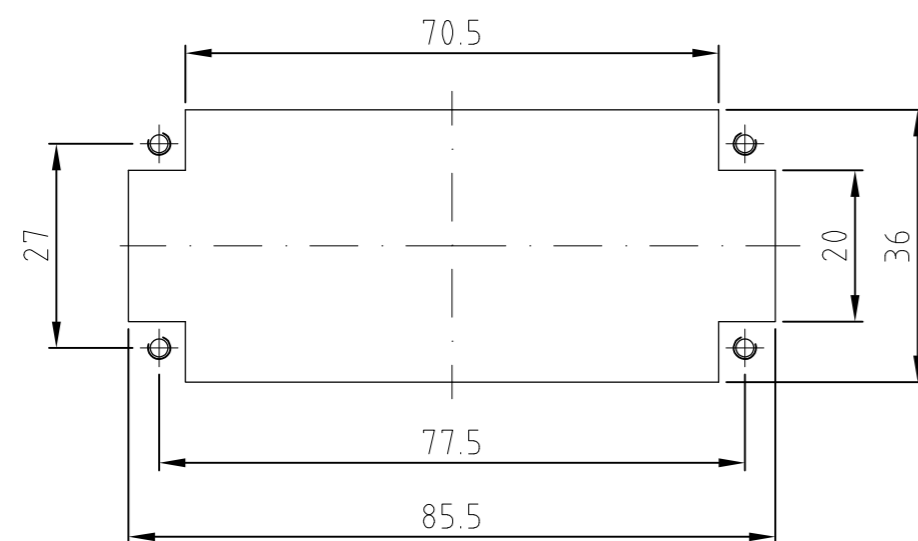
Printing 8+4+4 Screw/Thermo



NOTES:

- SUITABLE CRIMP CONTACTS: SERIES HE/HA  
OUTER DIMENSIONS OF INSULATION: MAX. Ø3,2 MM
  - SUITABLE HOOD SIZE 6; 10: SERIES HB; HD;HIP;EMV  
SUITABLE INSERTION AND EXTRACTION TOOL:  
SCREWDRIVER 0,5x3 DIN 5264
  - Strip lenght: Screw conection 10mm  
Spring clamp conection 10mm Crimp conection 7.5mm
  - STANDARDS:  
DIN EN 61984; DIN EN 60664-1
- 5 PACKAGING:  
5 SETS IN A CARTON, PRE-MOUNTED
- 6 SPECIAL PACKAGING: Krauss-Maffei  
PACKAGING UNIT: 200 PIECES

Panel cut-out for contact insert when used without housing



ITEM NO. POS.	DESCRIPTION	MATERIAL	COLOR	ITEM NO. POS.	NOTES
1	cover spring clamp version		light grey	4	
2	cover crimp version		light grey	3	
3	cover screw version		light grey	2	
4	pin insert		light grey	1	

ITEM NO. POS.	DESCRIPTION	MATERIAL	COLOR	ITEM NO. POS.	NOTES
0-19-4					
1-89-5					
7-97-1					
12-92-3					
19-31-9					
17-1-7					
1-1					

ITEM NO. POS.	DESCRIPTION	MATERIAL	COLOR	ITEM NO. POS.	NOTES
HE.16.Sti.S.B 1-16-KM					
HE.16.Sti.S.B 17-32-AU					
HE.16.Sti.S-T.B 8+4+4					
HE.16.Sti.S.B 1-16-AU					
HE.16.Sti.S.C.B 17-32					
HE.16.Sti.S.C.B 1-16					
HE.16.Sti.S.C.B 17-32					
HE.16.Sti.C					
HE.16.Sti.S.B 17-32					
HE.16.Sti.S-T.B 1-16					
HE.16.Sti.S.B 1-16					

ORDERING TEXT	DESCRIPTION	MATERIAL	COLOR	ITEM NO. POS.	NOTES
	THIS DRAWING IS A CONTROLLED DOCUMENT. DIESE ZEICHNUNG IST EIN KONTROLLIERTES DOKUMENT.				
	DIMENSIONS: MASSENHETEN mm				
	TOLERANCES UNLESS OTHERWISE SPECIFIED: ALLGEMEINTOLERANZEN				
	0 PLC ±				
	1 PLC ±				
	2 PLC ±				
	3 PLC ±				
	4 PLC ±				
	ANGLES / WINKEL ±				
	FINISH / OBERFLAECHE / FARBE				

NAME	DATE	SCALE	CAGE CODE	DRAWING NO. ZEICHNUNGS-NR.	RESTRICTED TO NUR FUER
Schneider	08.02.99	A2	00779	Male insert HE.16.STIs/C	
Schweiger	08.02.00				

CUSTOMER DRAWING / KUNDENZEICHNUNG	SCALE MASSSTAB	SHEET BLATT	REV
	1:1	1 von 1	C10