

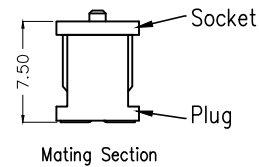
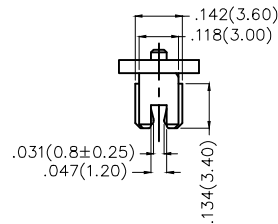
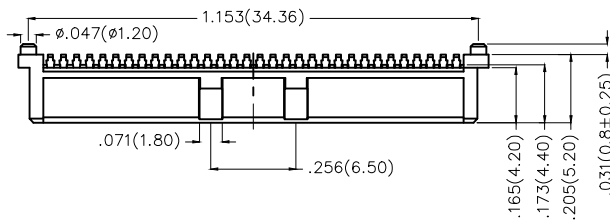
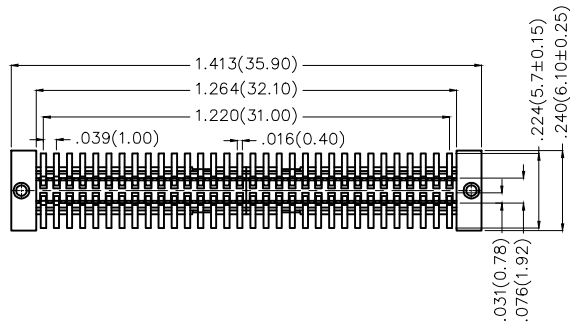
REV	LOCATIONS	DESCRIPTION	DATE	REVISER	APPD

**Electrical**

Current Rating: 0.5A AC(rms)/DC  
Voltage Rating: 50V AC(rms)/DC  
Contact Resistance: 50 m Ω Max  
Insulation Resistance: 500 M Ω MIN  
Withstanding Voltage: 250V AC r.m.s  
Temperature Range—Operating: -40°C~+105°C

**Material and Plating**

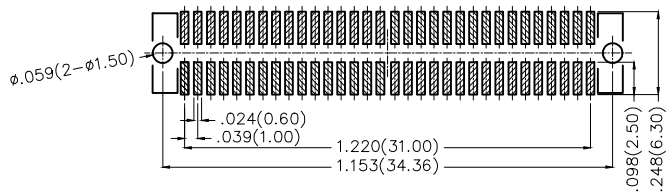
Housing: LCP( UL 94V-0)  
Contact Pin: Phosphor Bronze  
Plating: Gold Plated



**Ordering Information**

FBB 100 01 — F 64 S 1 XX 3 W5 M  
1 2 3 4 5 6 7 8 9 10 11

- |   |                                |   |   |   |                         |    |                           |    |                     |   |                                |
|---|--------------------------------|---|---|---|-------------------------|----|---------------------------|----|---------------------|---|--------------------------------|
| 1 | Category<br>FBB—Board To Board | 2 | Series Number<br>100—Pitch1.0mm   | 3 | Distinction No.<br>01   | 4  | Type<br>F—Female          | 5  | Circuits<br>64      | 6 | Entry Angle<br>S—180° Vertical |
| 7 | Plating<br>1—Gold Plated       | 8 | Thickness of Plating<br>00—Gold Flash<br>02—2μ"<br>Custom plate available | 9 | Material—Resin<br>3—LCP | 10 | Color—Resin<br>W5—Natural | 11 | Packaging<br>M—Reel |   |                                |



Recommended P.C.Board Layout

 THIRD ANGLE PROJECTION	GENERAL TOLERANCES (UNLESS SPECIFIED)		APPROVE BY FRANK	DATE 26/SEPT/13	PART NO. FBB10001-F64S1XX3W5M	TEM NO. FBB10001-F	 Leader Of Industry
	X.±.012(0.30)	X.±5'	CHECKED BY CHERRY	DATE 26/SEPT/13	TITLE Board to Board Pitch 1.0mm 180° Vertical (SMT)		
DESIGN UNITS Inch (metric)	X.XX±.008(0.20)	.X'±2"	DRAWN BY JACOB	DATE 26/SEPT/13	THIS DRAWING CONTAINS INFORMATION THAT IS PROPRIETARY TO TXGA INDUSTRIAL ELECTRONICS(S.Z)CO.,LTD AND SHOULD NOT BE USED WITHOUT WRITTEN PERMISSION		
SCALE 5:1	SIZE A4	X.XXX±.004(0.10)					