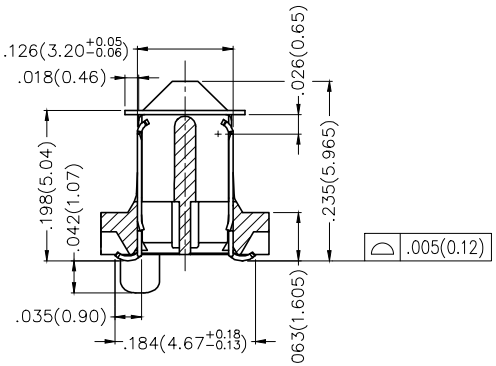
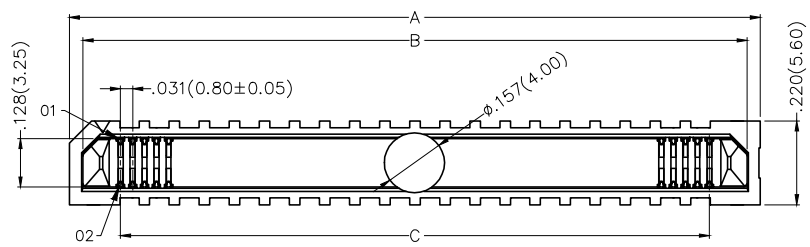


REV	LOCATIONS	DESCRIPTION	DATE	REVISER	APPD

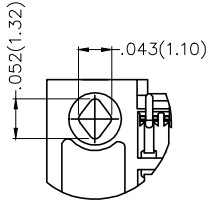
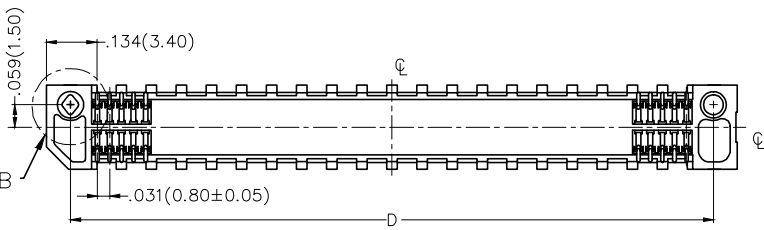
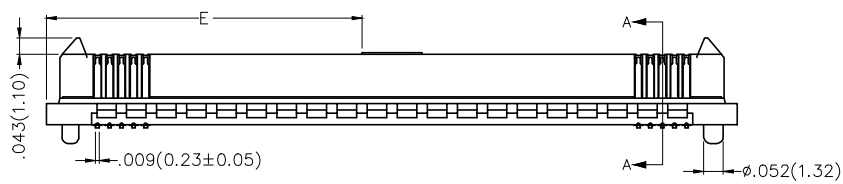
SPECIFICATIONS

Electrical  
 Current Rating: 0.5A AC(rms)/DC  
 Voltage Rating: 50V AC(rms)/DC  
 Contact Resistance: 50 mΩ Max.  
 Insulation Resistance: 100 MΩ Min.  
 Withstanding Voltage: 200V AC r.m.s  
 Temperature Range—Operating: -35°C~+85°C

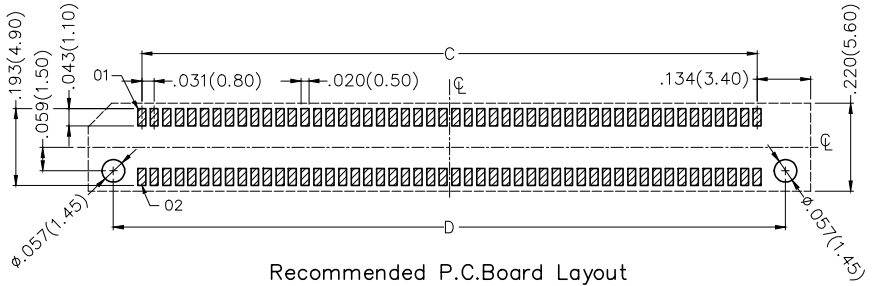
Material and Plating  
 Housing: LCP (UL 94V-0)  
 Contacts: Phosphor Bronze/ Selective gold in contact area, tin on tail



Section A-A  
Scale 2:1



Detail 'B'  
Scale 2:1




Recommended P.C.Board Layout  
General Tolerances: ±0.05mm

Ordering Information

FBB 080 05 — M XX S 3 XX 3 K6 M  
 1 2 3 4 5 6 7 8 9 10 11

1 Category FBB—Board to Board	2 Series Number 080—Pitch 0.80mm	3 Distinction No. 05	4 Type M—Male	5 Circuits XX	6 Entry Angle S—180° Vertical
7 Plating 3—Selective gold in contact area, tin on tail	8 Thickness of Plating 03—3μ" 05—5μ" Custom plate available	9 Material—Resin 3—LCP	10 Color—Resin K6—Black	11 Packaging M—Reel	

THIRD ANGLE PROJECTION	GENERAL TOLERANCES (UNLESS SPECIFIED)		APPROVE BY FRANK	DATE 21/DEC/18	PART NO. FBB08005-MXXS3XX3K6M	ITEM NO. FBB08005	 Leader Of Industry
	DESIGN UNITS Inch (metric)	X.±.012(0.30) X.X±.008(0.20) X.XX±.006(0.15) X.XXX±.004(0.10)	X.±5° .X'±2° .XX'±1° .XXX'±0.5°	CHECKED BY CHERRY	DATE 21/DEC/18	TITLE Board to Board Pitch 0.8mm 180° Vertical (SMT)	
SCALE 5:1	SIZE A4		DRAWN BY KATE	DATE 21/DEC/18	THIS DRAWING CONTAINS INFORMATION THAT IS PROPRIETARY TO TXGA INDUSTRIAL ELECTRONICS(S.Z)CO.,LTD AND SHOULD NOT BE USED WITHOUT WRITTEN PERMISSION		REV 0 SHEET NO. 1/2

1 2 3 4 5 6 7 8

REV	LOCATIONS	DESCRIPTION	DATE	REVISER	APPD

A

B



C

D

E

F

Circuits (n)	Part No.	Dimensions(in/mm)				
		A	B	C	D	E
30	FBB08005-M30S3XX3K6M	.709(18.00)	.638(16.20)	.441(11.20)	.583(14.80)	.276(7.00)
40	FBB08005-M40S3XX3K6M	.866(22.00)	.795(20.20)	.598(15.20)	.740(18.80)	.354(9.00)
60	FBB08005-M60S3XX3K6M	1.181(30.00)	1.110(28.20)	.913(23.20)	1.055(26.80)	.512(13.00)
80	FBB08005-M80S3XX3K6M	1.496(38.00)	1.425(36.20)	1.228(31.20)	1.370(34.80)	.669(17.00)
120	FBB08005-M120S3XX3K6M	2.126(54.00)	2.055(52.20)	1.858(47.20)	2.000(50.80)	.984(25.00)
150	FBB08005-M150S3XX3K6M	2.598(66.00)	2.528(64.20)	2.331(59.20)	2.472(62.80)	1.220(31.00)

 THIRD ANGLE PROJECTION	GENERAL TOLERANCES (UNLESS SPECIFIED)		APPROVE BY FRANK	DATE 21/DEC/18	PART NO. FBB08005-MXXS3XX3K6M	ITEM NO. FBB08005	 Leader Of Industry			
	DESIGN UNITS Inch (metric)	X.±.012(0.30) X.X±.008(0.20) X.XX±.006(0.15)	X'±5" .X'±2" .XX'±1"	CHECKED BY CHERRY	DATE 21/DEC/18	TITLE Board to Board Pitch 0.8mm 180° Vertical (SMT)		REV 0	SHEET NO. 2/2	
	SCALE 5:1	SIZE A4	X.XXX±.004(0.10) .XXX'±0.5"	DRAWN BY KATE	DATE 21/DEC/18	THIS DRAWING CONTAINS INFORMATION THAT IS PROPRIETARY TO TXGA INDUSTRIAL ELECTRONICS(S.Z)CO.,LTD AND SHOULD NOT BE USED WITHOUT WRITTEN PERMISSION				

1 2 3 4 5 6 7 8