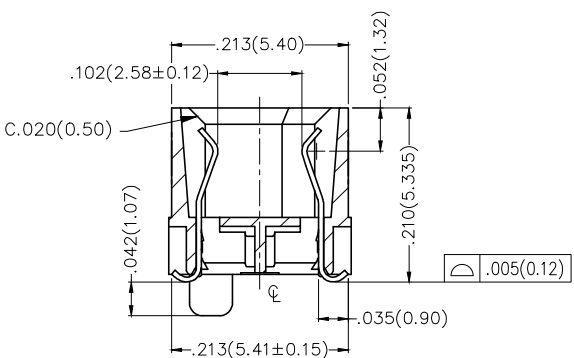
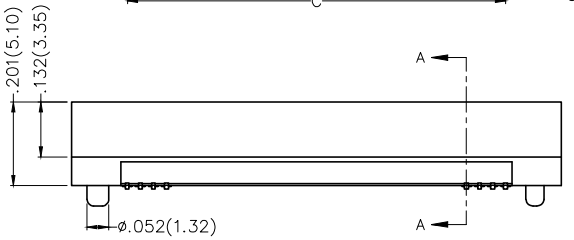
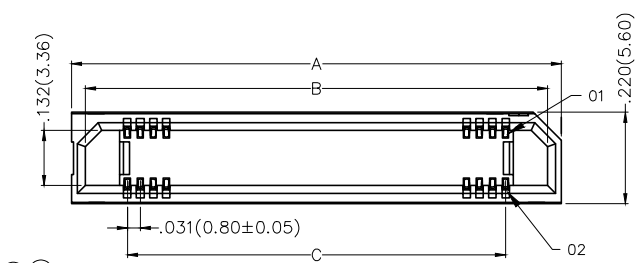


| REV | LOCATIONS | DESCRIPTION | DATE | REVISER | APPD |
|-----|-----------|-------------|------|---------|------|
| | | | | | |

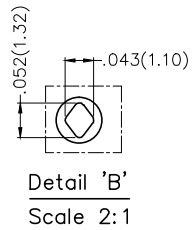
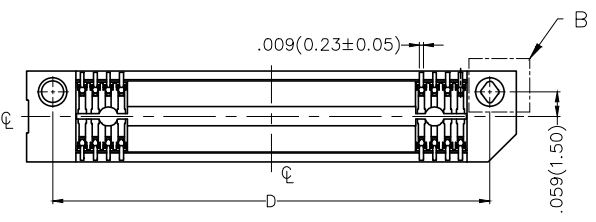
SPECIFICATIONS

Electrical
 Current Rating: 0.5A AC(rms)/DC
 Voltage Rating: 50V AC(rms)/DC
 Contact Resistance: 50 mΩ Max.
 Insulation Resistance: 100 MΩ Min.
 Withstanding Voltage: 200V AC r.m.s
 Temperature Range-Operating: -35°C~+85°C

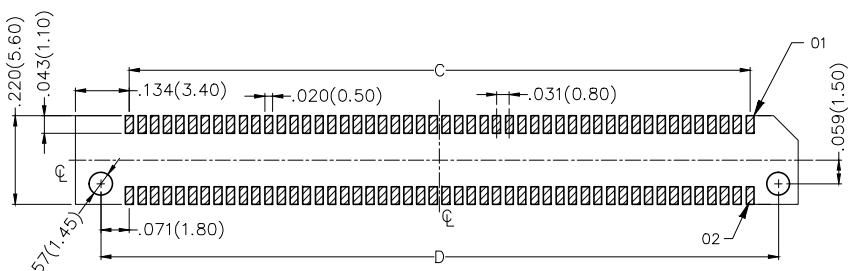
Material and Plating
 Housing: LCP (UL 94V-0)
 Contacts: Phosphor Bronze/ Selective gold in contact area, tin on tail



Section A-A
Scale 2:1



Detail 'B'
Scale 2:1



Recommended P.C.Board Layout
General Tolerances: ±0.05mm

Ordering Information

FBB 080 05 — F XX S 3 XX 3 K6 M
 1 2 3 4 5 6 7 8 9 10 11

| | | | | | |
|--|--|---------------------------|----------------------------|------------------------|----------------------------------|
| 1 Category FBB-Board to Board | 2 Series Number 080-Pitch0.80mm | 3 Distinction No. 05 | 4 Type F-Female | 5 Circuits XX | 6 Entry Angle S-180° Vertical |
| 7 Plating 3-Selective gold in contact area, tin on tail | 8 Thickness of Plating 03-3μ" 05-5μ" Custom plate available | 9 Material-Resin 3-LCP | 10 Color-Resin K6-Black | 11 Packaging M-Reel | |

| | | | | | | | |
|-------------------------------|---------------------------------------|------------------|----------------------|-------------------|--|----------------------|------------------------|
| THIRD ANGLE PROJECTION | GENERAL TOLERANCES (UNLESS SPECIFIED) | | APPROVE BY FRANK | DATE 21/DEC/18 | PART NO. FBB08005-FXXS3XX3K6M | ITEM NO. FBB08005 | Leader Of Industry |
| | X.±.012(0.30) | X.±5' | CHECKED BY CHERRY | DATE 21/DEC/18 | TITLE Board to Board Pitch 0.8mm 180° Vertical (SMT) | | |
| DESIGN UNITS Inch (metric) | X.X±.008(0.20) | .X'±2" | DRAWN BY KATE | DATE 21/DEC/18 | THIS DRAWING CONTAINS INFORMATION THAT IS PROPRIETARY TO TXGA INDUSTRIAL ELECTRONICS(S.Z)CO.,LTD AND SHOULD NOT BE USED WITHOUT WRITTEN PERMISSION | | |
| SCALE 5:1 | SIZE A4 | X.XXX±.004(0.10) | .XXX'±0.5' | | | | |

1 2 3 4 5 6 7 8

| REV | LOCATIONS | DESCRIPTION | DATE | REVISER | APPD |
|-----|-----------|-------------|------|---------|------|
| | | | | | |

A

B

C

D

E

F

A

B



C

D

E

F

| Circuits (n) | Part No. | Dimensions(in/mm) | | | |
|-----------------|-----------------------|-------------------|--------------|--------------|--------------|
| | | A | B | C | D |
| 30 | FBB08005-F30S3XX3K6M | .709(18.00) | .643(16.32) | .441(11.20) | .583(14.80) |
| 40 | FBB08005-F40S3XX3K6M | .866(22.00) | .800(20.32) | .598(15.20) | .740(18.80) |
| 60 | FBB08005-F60S3XX3K6M | 1.181(30.00) | 1.115(28.32) | .913(23.20) | 1.055(26.80) |
| 80 | FBB08005-F80S3XX3K6M | 1.496(38.00) | 1.430(36.32) | 1.228(31.20) | 1.370(34.80) |
| 120 | FBB08005-F120S3XX3K6M | 2.126(54.00) | 2.060(52.32) | 1.858(47.20) | 2.000(50.80) |
| 150 | FBB08005-F150S3XX3K6M | 2.598(66.00) | 2.532(64.32) | 2.331(59.20) | 2.472(62.80) |

| | | | | | | | | | | |
|---|--|--|--|----------------------|----------------------------------|---|---|-------|---------------|--|
|  THIRD ANGLE PROJECTION | GENERAL TOLERANCES (UNLESS SPECIFIED) | | APPROVE BY FRANK | DATE 21/DEC/18 | PART NO. FBB08005-FXXS3XX3K6M | ITEM NO. FBB08005 |  Leader Of Industry | | | |
| | DESIGN UNITS Inch (metric) | X.±.012(0.30) X.X±.008(0.20) X.XX±.006(0.15) X.XXX±.004(0.10) | X'±5' .X'±2' .XX'±1' .XXX'±0.5' | CHECKED BY CHERRY | DATE 21/DEC/18 | TITLE Board to Board Pitch 0.8mm 180° Vertical (SMT) | | REV 0 | SHEET NO. 2/2 | |
| | SCALE 5:1 | SIZE A4 | DRAWN BY KATE | | DATE 21/DEC/18 | THIS DRAWING CONTAINS INFORMATION THAT IS PROPRIETARY TO TXGA INDUSTRIAL ELECTRONICS(S.Z)CO.,LTD AND SHOULD NOT BE USED WITHOUT WRITTEN PERMISSION | | | | |

1 2 3 4 5 6 7 8