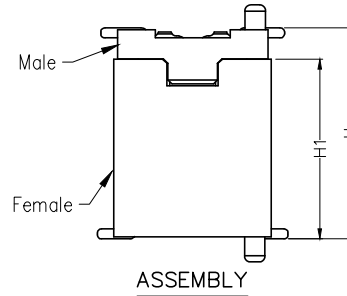
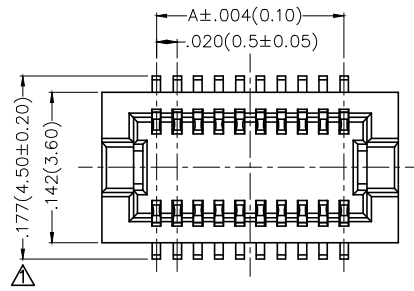


REV	LOCATIONS	DESCRIPTION	DATE	REVISER	APPD
1	△	Size change	02/APR/20	KATE	CHERRY



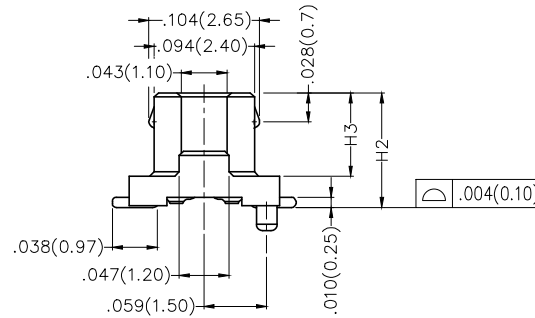
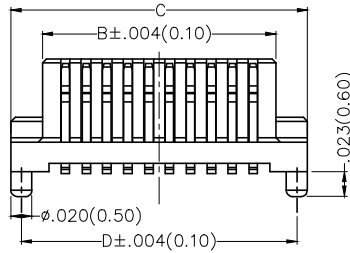
SPECIFICATIONS

Electrical

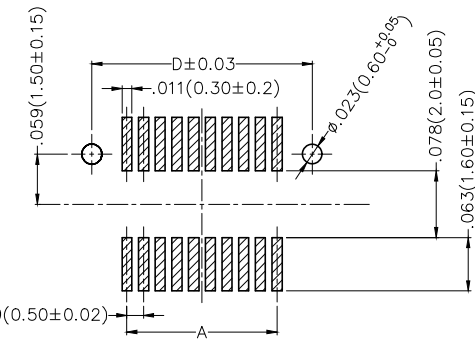
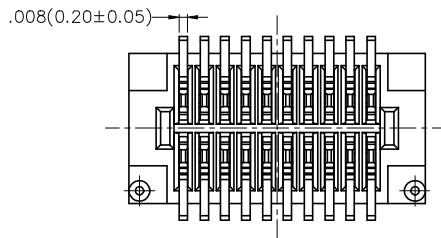
Current Rating: 0.5A AC(rms)/DC  
 Voltage Rating: 50V AC(rms)/DC  
 Contact Resistance: 50 mΩ Max.  
 Insulation Resistance: 100 MΩ Min.  
 Withstanding Voltage: 200V AC r.m.s  
 Temperature Range-Operating: -35°C~+85°C

Material and Plating

Housing: LCP (UL 94V-0) Natural  
 Contacts: Phosphor Bronze/ Gold plated



Dimensions(in/mm)			
Height H	Female H1	Male H2	Male H3
.118(3.00)	.093(2.35)	.087(2.20)	.057(1.45)
.197(5.00)	.171(4.35)	.108(2.75)	.079(2.00)




Recommended P.C.Board Layout  
 General Tolerances: ±.002(0.05)

Ordering Information

FBB 050 08 — M XX S 1 XX 3 W5 M HXX  
 1 2 3 4 5 6 7 8 9 10 11 12

1 Category FBB-Board to Board	2 Series Number 050-Pitch0.50mm	3 Distinction No. 08	4 Type M-Male	5 Circuits XX	6 Entry Angle S-180° Vertical
7 Plating 1-Gold Plated	8 Thickness of Plating 01-1μ" 03-3μ" Custom plate available	9 Material-Resin 3-LCP	10 Color-Resin W5-Natural	11 Packaging M-Reel	12 Female height H22-H2=2.20mm H28-H2=2.75mm

THIRD ANGLE PROJECTION	GENERAL TOLERANCES (UNLESS SPECIFIED)		APPROVE BY FRANK	DATE 14/AUG/19	PART NO. FBB05008-MXXS1XX3W5MHXX	TEM NO. FBB05008	 Leader Of Industry	
	DESIGN UNITS Inch (metric)	X±.012(0.30) X.X±.008(0.20) X.XX±.006(0.15) X.XXX±.004(0.10)	.X'±5' .X'±2' .XX'±1' .XXX'±0.5'	CHECKED BY CHERRY	DATE 14/AUG/19	TITLE Board to Board Pitch 0.5mm 180° Vertical (SMT)		REV 0
SCALE 5:1	SIZE A4	DRAWN BY Aubrey		DATE 14/AUG/19	THIS DRAWING CONTAINS INFORMATION THAT IS PROPRIETARY TO TXGA INDUSTRIAL ELECTRONICS(S.Z)CO.,LTD AND SHOULD NOT BE USED WITHOUT WRITTEN PERMISSION			

1 2 3 4 5 6 7 8

REV	LOCATIONS	DESCRIPTION	DATE	REVISER	APPD

A

B



C

D

E

F

Circuits (n)	Part No.	Dimensions(in/mm)			
		A	B	C	D
20	FBB05008-M20S1XX3W5MHXX	.177(4.50)	.220(5.60)	.280(7.10)	.260(6.60)
30	FBB05008-M30S1XX3W5MHXX	.276(7.00)	.319(8.10)	.378(9.60)	.358(9.10)
40	FBB05008-M40S1XX3W5MHXX	.374(9.50)	.417(10.60)	.476(12.10)	.457(11.60)
50	FBB05008-M50S1XX3W5MHXX	.472(12.00)	.516(13.10)	.575(14.60)	.555(14.10)

 THIRD ANGLE PROJECTION	GENERAL TOLERANCES (UNLESS SPECIFIED)		APPROVE BY FRANK	DATE 14/AUG/19	PART NO. FBB05008-MXXS1XX3W5MHXX	ITEM NO. FBB05008	 Leader Of Industry									
	<table border="1"> <tr> <td>X.±.012(0.30)</td> <td>X.±5°</td> </tr> <tr> <td>X.X±.008(0.20)</td> <td>.X'±2"</td> </tr> <tr> <td>X.XX±.006(0.15)</td> <td>.XX'±1"</td> </tr> <tr> <td>X.XXX±.004(0.10)</td> <td>.XXX'±0.5"</td> </tr> </table>		X.±.012(0.30)	X.±5°	X.X±.008(0.20)	.X'±2"		X.XX±.006(0.15)	.XX'±1"	X.XXX±.004(0.10)	.XXX'±0.5"	CHECKED BY CHERRY	DATE 14/AUG/19	TITLE Board to Board Pitch 0.5mm 180° Vertical (SMT)		REV 0
	X.±.012(0.30)	X.±5°														
	X.X±.008(0.20)	.X'±2"														
X.XX±.006(0.15)	.XX'±1"															
X.XXX±.004(0.10)	.XXX'±0.5"															
DESIGN UNITS Inch (metric)	SCALE 5:1	SIZE A4	DRAWN BY Aubrey	DATE 14/AUG/19	THIS DRAWING CONTAINS INFORMATION THAT IS PROPRIETARY TO TXGA INDUSTRIAL ELECTRONICS(S.Z)CO.,LTD AND SHOULD NOT BE USED WITHOUT WRITTEN PERMISSION											

1 2 3 4 5 6 7 8