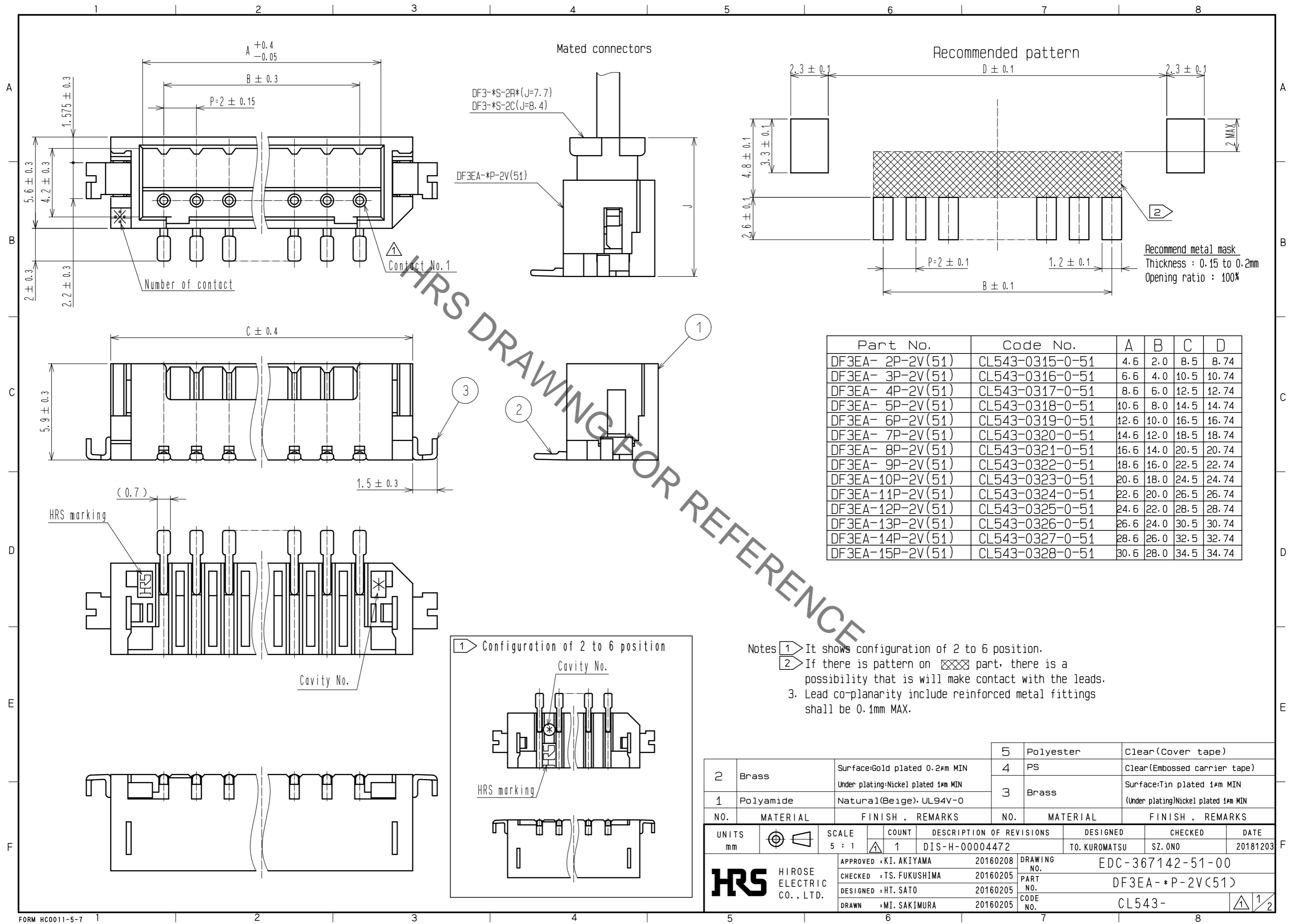


Apr.1.2020 Copyright 2020 HIROSE ELECTRIC CO., LTD. All Rights Reserved.  
In case of consideration for using Automotive equipment / device which demand high reliability, kindly contact our sales window correspondents.



Part No.	Code No.	A	B	C	D
DF3EA- 2P-2V(51)	CL543-0315-0-51	4.6	2.0	8.5	8.74
DF3EA- 3P-2V(51)	CL543-0316-0-51	6.6	4.0	10.5	10.74
DF3EA- 4P-2V(51)	CL543-0317-0-51	8.6	6.0	12.5	12.74
DF3EA- 5P-2V(51)	CL543-0318-0-51	10.6	8.0	14.5	14.74
DF3EA- 6P-2V(51)	CL543-0319-0-51	12.6	10.0	16.5	16.74
DF3EA- 7P-2V(51)	CL543-0320-0-51	14.6	12.0	18.5	18.74
DF3EA- 8P-2V(51)	CL543-0321-0-51	16.6	14.0	20.5	20.74
DF3EA- 9P-2V(51)	CL543-0322-0-51	18.6	16.0	22.5	22.74
DF3EA-10P-2V(51)	CL543-0323-0-51	20.6	18.0	24.5	24.74
DF3EA-11P-2V(51)	CL543-0324-0-51	22.6	20.0	26.5	26.74
DF3EA-12P-2V(51)	CL543-0325-0-51	24.6	22.0	28.5	28.74
DF3EA-13P-2V(51)	CL543-0326-0-51	26.6	24.0	30.5	30.74
DF3EA-14P-2V(51)	CL543-0327-0-51	28.6	26.0	32.5	32.74
DF3EA-15P-2V(51)	CL543-0328-0-51	30.6	28.0	34.5	34.74

- Notes
- It shows configuration of 2 to 6 position.
  - If there is pattern on part, there is a possibility that it will make contact with the leads.
  - Lead co-planarity include reinforced metal fittings shall be 0.1mm MAX.

NO.	MATERIAL	FINISH	REMARKS	NO.	MATERIAL	FINISH	REMARKS
2	Brass	Surface:Gold plated 0.2µm MIN Under plating:Nickel plated 1µm MIN		5	Polyester		Clear(Cover tape)
1	Polyamide	Natural(Beige), UL94V-0		4	PS		Clear(Embossed carrier tape)
				3	Brass		Surface:Tin plated 1µm MIN (Under plating)Nickel plated 1µm MIN

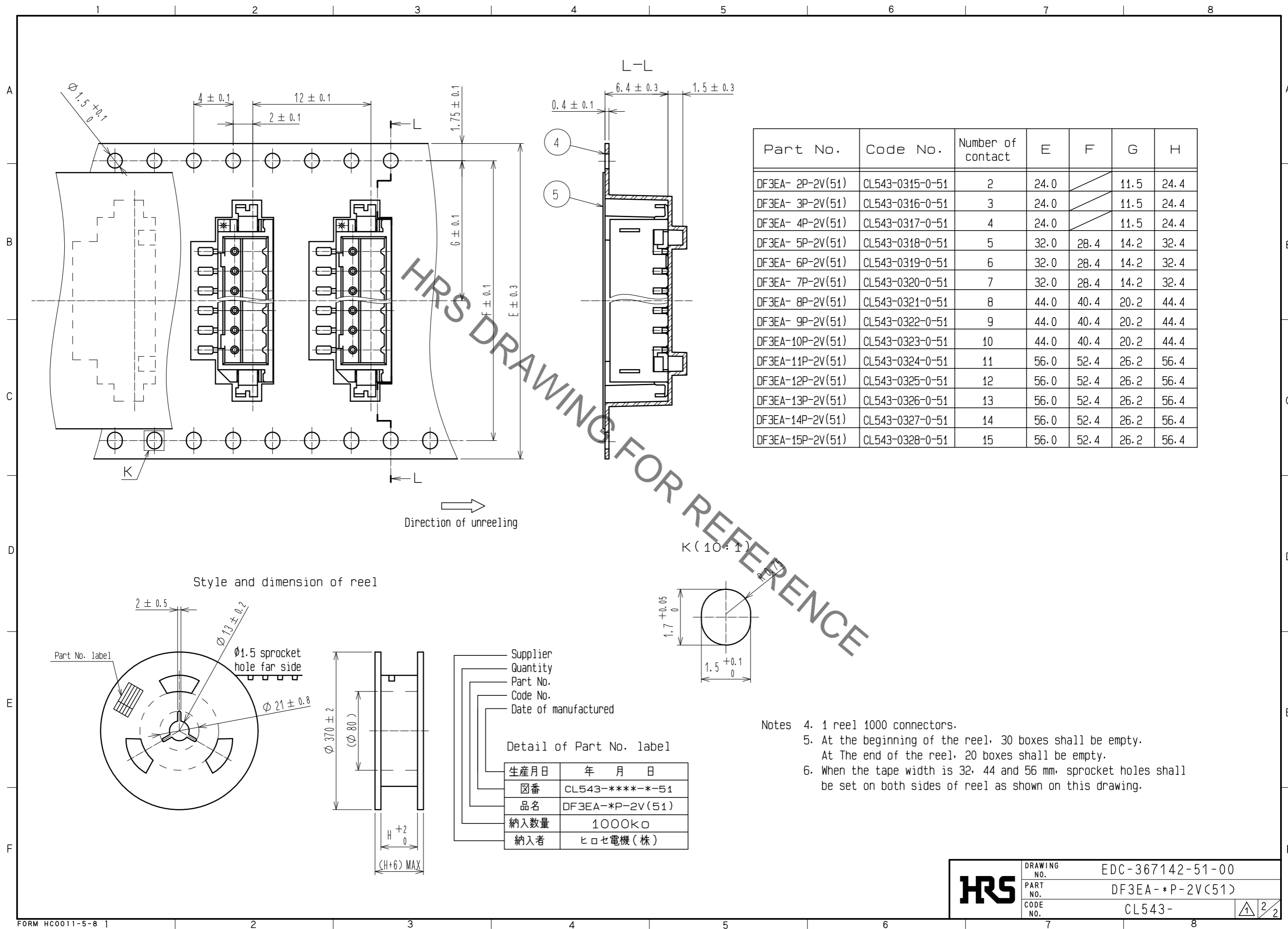
  

UNITS	SCALE	COUNT	DESCRIPTION OF REVISIONS	DESIGNED	CHECKED	DATE
mm	5 : 1	1	DIS-H-00004472	TO. KUROMATSU	SZ. ONO	20181203

APPROVED	CHECKED	DESIGNED	DRAWN	DRAWING NO.	PART NO.	CODE NO.
•KI. AKIYAMA	•TS. FUKUSHIMA	•HT. SATO	•MI. SAKIMURA	20160208	20160205	20160205
				EDC-367142-51-00		
				DF3EA-*P-2V(51)		
				CL543-		

Apr.1.2020 Copyright 2020 HIROSE ELECTRIC CO., LTD. All Rights Reserved.  
 In case of consideration for using Automotive equipment / device which demand high reliability, kindly contact our sales window correspondents.



Part No.	Code No.	Number of contact	E	F	G	H
DF3EA- 2P-2V(51)	CL543-0315-0-51	2	24.0		11.5	24.4
DF3EA- 3P-2V(51)	CL543-0316-0-51	3	24.0		11.5	24.4
DF3EA- 4P-2V(51)	CL543-0317-0-51	4	24.0		11.5	24.4
DF3EA- 5P-2V(51)	CL543-0318-0-51	5	32.0	28.4	14.2	32.4
DF3EA- 6P-2V(51)	CL543-0319-0-51	6	32.0	28.4	14.2	32.4
DF3EA- 7P-2V(51)	CL543-0320-0-51	7	32.0	28.4	14.2	32.4
DF3EA- 8P-2V(51)	CL543-0321-0-51	8	44.0	40.4	20.2	44.4
DF3EA- 9P-2V(51)	CL543-0322-0-51	9	44.0	40.4	20.2	44.4
DF3EA-10P-2V(51)	CL543-0323-0-51	10	44.0	40.4	20.2	44.4
DF3EA-11P-2V(51)	CL543-0324-0-51	11	56.0	52.4	26.2	56.4
DF3EA-12P-2V(51)	CL543-0325-0-51	12	56.0	52.4	26.2	56.4
DF3EA-13P-2V(51)	CL543-0326-0-51	13	56.0	52.4	26.2	56.4
DF3EA-14P-2V(51)	CL543-0327-0-51	14	56.0	52.4	26.2	56.4
DF3EA-15P-2V(51)	CL543-0328-0-51	15	56.0	52.4	26.2	56.4

HRS DRAWING FOR REFERENCE

- Notes
- 1 reel 1000 connectors.
  - At the beginning of the reel, 30 boxes shall be empty.  
At The end of the reel, 20 boxes shall be empty.
  - When the tape width is 32, 44 and 56 mm, sprocket holes shall be set on both sides of reel as shown on this drawing.

Supplier  
 Quantity  
 Part No.  
 Code No.  
 Date of manufactured

Detail of Part No. label

生産月日	年 月 日
図番	CL543-****-*-51
品名	DF3EA-*P-2V(51)
納入数量	1000K $\square$
納入者	ヒロセ電機(株)

<b>HRS</b>	DRAWING NO.	EDC-367142-51-00
	PART NO.	DF3EA-*P-2V(51)
	CODE NO.	CL543-