

NOTES:
 1.MATERIALS:
 1-1.INSULATOR:Polyester UL94V-0,
 1-2.CONTACT:BRASS,
 1-3.PLATED:CONTACT GOLD PLATED OVER Ni.
 2.ELECTRICAL CHARACTERISTICS:
 2-1.CURRENT RATING:3 Amp,
 2-2.VOLTAGE RATING:250V AC/DC,
 2-3.CONTACT RESISTANCE: 20 mΩhms MAX,
 2-4.INSULATION RESISTANCE:1000 MΩhms MIN,
 2-5.WITHSTANDING VOLTAGE: 500V AC/MINUTE,
 2-6.Operation Temperature:-25°C~+105°C.

PART NO. Z-213 ** 1 * 002 * * * *

NO. Of Positions 04~80

PIN TYPE
 1=Straight
 2=Right Angle(上凹)
 3=Right Angle(下凹)

Contact length Dim"A"X"B"
 1:3.0x6.0
 2:2.4x6.0
 3:4.5x6.0
 5:3.0x4.5
 7:3.2x5.84
 8:3.0x10.0
 D:3.4x7.0
 L:3.2x7.0
 R:3.4x5.86
 U:3.4x6.0

Logo
 0=No logo
 1=Nextron logo

Housing Color
 0:BLACK 2:RED
 4:YELLOW 6:BLUE
 9:WHITE

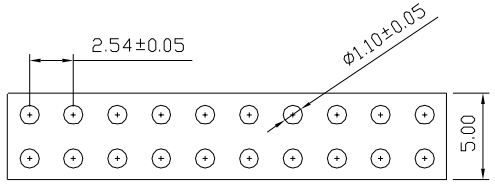
Housing Material
 0:PBT 1:LCP
 4:PA6T 5:PA9T

Plated
 See Table (1)

Table (1)

Code	Definition	Code	Definition
1	Gold/Flash	A	Gold 1u"/Light Tin
2	Gold 3u"	B	Gold 3u"/Light Tin
3	Gold 5u"	C	Gold 5u"/Light Tin
4	Gold 10u"	D	Gold 10u"/Light Tin
5	Gold 15u"	E	Gold 15u"/Light Tin
6	Gold 30u"	F	Gold 30u"/Light Tin

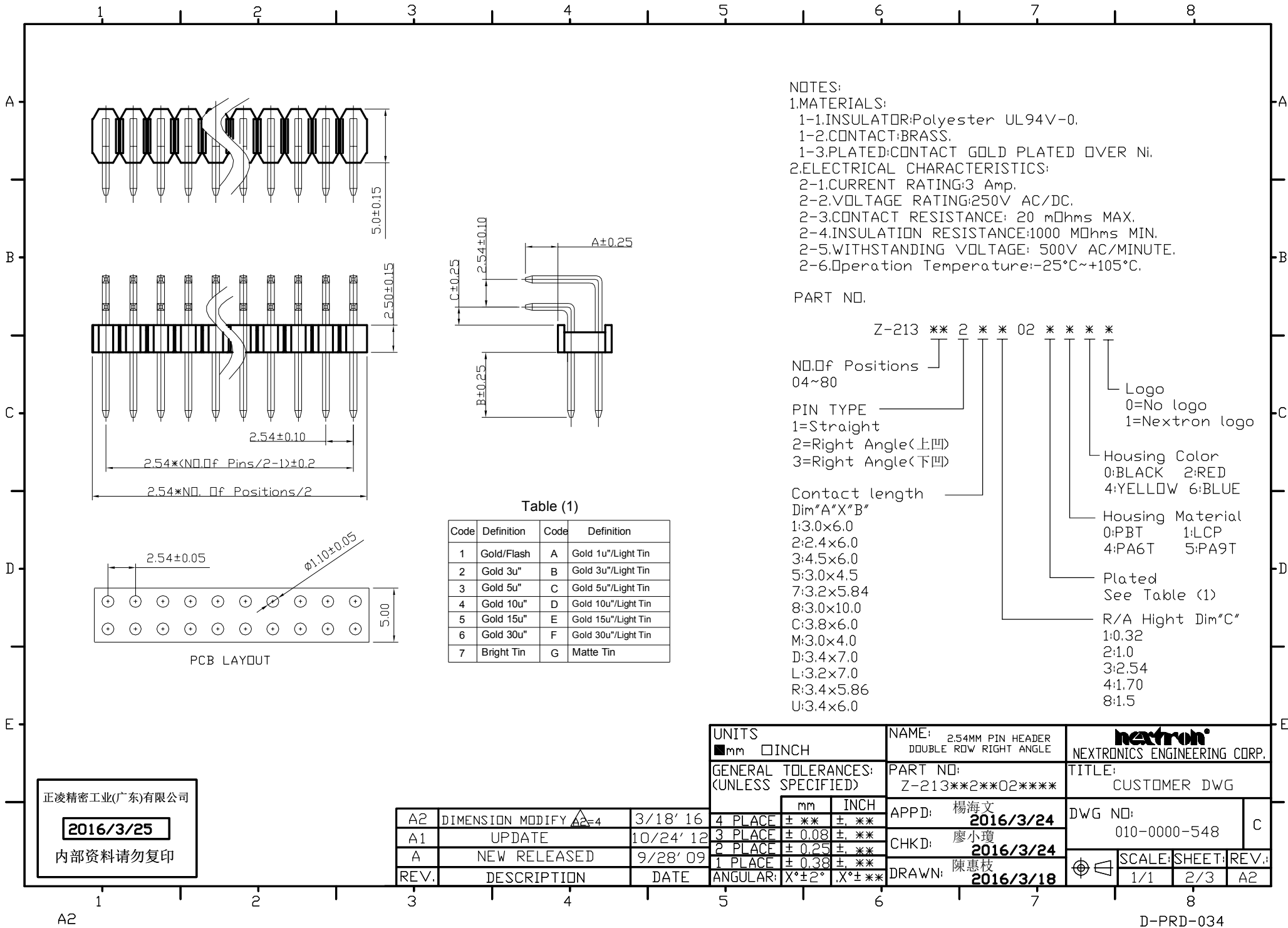
PCB LAYOUT



正凌精密工业(广东)有限公司
2016/3/25
 内部资料请勿复印

REV.	DESCRIPTION	DATE
A2	DIMENSION MODIFY	3/18' 16
A1	UPDATE	10/24' 12
A	NEW RELEASED	9/28' 09

UNITS ■mm □INCH		NAME: 2.54MM PIN HEADER DOUBLE ROW STRAIGHT PIN		NEXTRON® NEXTRONICS ENGINEERING CORP.	
GENERAL TOLERANCES: (UNLESS SPECIFIED)		PART NO: Z-213**1*002****		TITLE: CUSTOMER DWG	
mm		INCH		DWG NO: 010-0000-548	
4 PLACE	± **	± **	APPD: 楊海文 2016/3/24	SCALE: SHEET: REV.: 1/1 1/3 A2	
3 PLACE	± 0.08	± **	CHKD: 廖小瓊 2016/3/24		
2 PLACE	± 0.25	± **	DRAWN: 陳惠枝 2016/3/18		
1 PLACE	± 0.38	± **			
ANGULAR:	X°±2°	X°±**			



NOTES:
 1.MATERIALS:
 1-1.INSULATOR:Polyester UL94V-0.
 1-2.CONTACT:BRASS.
 1-3.PLATED:CONTACT GOLD PLATED OVER Ni.
 2.ELECTRICAL CHARACTERISTICS:
 2-1.CURRENT RATING:3 Amp.
 2-2.VOLTAGE RATING:250V AC/DC.
 2-3.CONTACT RESISTANCE: 20 mΩhms MAX.
 2-4.INSULATION RESISTANCE:1000 MΩhms MIN.
 2-5.WITHSTANDING VOLTAGE: 500V AC/MINUTE.
 2-6.Operation Temperature:-25°C~+105°C.

PART NO. Z-213 ** 2 * * 02 * * * *

NO.Of Positions 04~80

PIN TYPE
 1=Straight
 2=Right Angle<上凹>
 3=Right Angle<下凹>

Contact length Dim"A"X"B"
 1:3.0x6.0
 2:2.4x6.0
 3:4.5x6.0
 5:3.0x4.5
 7:3.2x5.84
 8:3.0x10.0
 C:3.8x6.0
 M:3.0x4.0
 D:3.4x7.0
 L:3.2x7.0
 R:3.4x5.86
 U:3.4x6.0

Logo
 0=No logo
 1=Nextron logo

Housing Color
 0:BLACK 2:RED
 4:YELLOW 6:BLUE

Housing Material
 0:PBT 1:PC
 4:PA6T 5:PA9T

Plated
 See Table (1)

R/A Hight Dim"C"
 1:0.32
 2:1.0
 3:2.54
 4:1.70
 8:1.5

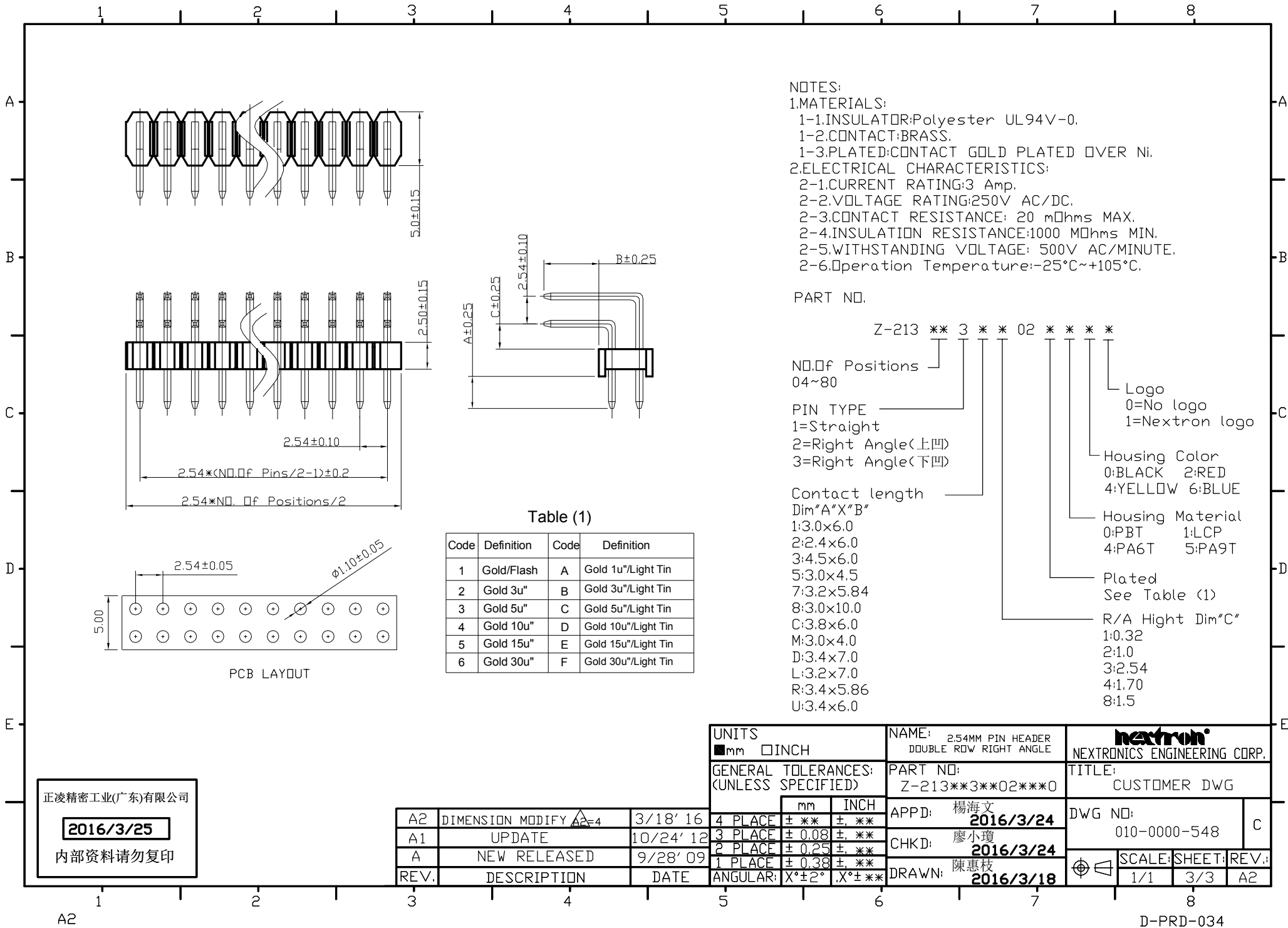
Table (1)

Code	Definition	Code	Definition
1	Gold/Flash	A	Gold 1u"/Light Tin
2	Gold 3u"	B	Gold 3u"/Light Tin
3	Gold 5u"	C	Gold 5u"/Light Tin
4	Gold 10u"	D	Gold 10u"/Light Tin
5	Gold 15u"	E	Gold 15u"/Light Tin
6	Gold 30u"	F	Gold 30u"/Light Tin
7	Bright Tin	G	Matte Tin

UNITS ■mm □INCH	NAME: 254MM PIN HEADER DOUBLE ROW RIGHT ANGLE	NEXTRON® NEXTRONICS ENGINEERING CORP.	
GENERAL TOLERANCES: (UNLESS SPECIFIED)	PART NO: Z-213**2**02**	TITLE: CUSTOMER DWG	
	APPD: 楊海文 2016/3/24	DWG NO: 010-0000-548	C
	CHKD: 廖小瓊 2016/3/24	SCALE: SHEET: REV.:	
	DRAWN: 陳惠枝 2016/3/18	1/1 2/3 A2	

正凌精密工业(广东)有限公司
 2016/3/25
 内部资料请勿复印

REV.	DESCRIPTION	DATE
A2	DIMENSION MODIFY	3/18' 16
A1	UPDATE	10/24' 12
A	NEW RELEASED	9/28' 09



NOTES:
 1.MATERIALS:
 1-1.INSULATOR:Polyester UL94V-0.
 1-2.CONTACT:BRASS.
 1-3.PLATED:CONTACT GOLD PLATED OVER Ni.
 2.ELECTRICAL CHARACTERISTICS:
 2-1.CURRENT RATING:3 Amp.
 2-2.VOLTAGE RATING:250V AC/DC.
 2-3.CONTACT RESISTANCE: 20 mΩhms MAX.
 2-4.INSULATION RESISTANCE:1000 MΩhms MIN.
 2-5.WITHSTANDING VOLTAGE: 500V AC/MINUTE.
 2-6.Operation Temperature:-25°C~+105°C.

PART NO.
 Z-213 ** 3 * * 02 * * * *
 NO.Of Positions 04~80
 PIN TYPE
 1=Straight
 2=Right Angle<上凹>
 3=Right Angle<下凹>
 Contact length Dim"A"X"B"
 1:3.0x6.0
 2:2.4x6.0
 3:4.5x6.0
 5:3.0x4.5
 7:3.2x5.84
 8:3.0x10.0
 C:3.8x6.0
 M:3.0x4.0
 D:3.4x7.0
 L:3.2x7.0
 R:3.4x5.86
 U:3.4x6.0
 Logo
 0=No logo
 1=Nextron logo
 Housing Color
 0:BLACK 2:RED
 4:YELLOW 6:BLUE
 Housing Material
 0:PBT 1:LCP
 4:PA6T 5:PA9T
 Plated
 See Table (1)
 R/A Hight Dim"C"
 1:0.32
 2:1.0
 3:2.54
 4:1.70
 8:1.5

Table (1)

Code	Definition	Code	Definition
1	Gold/Flash	A	Gold 1u"/Light Tin
2	Gold 3u"	B	Gold 3u"/Light Tin
3	Gold 5u"	C	Gold 5u"/Light Tin
4	Gold 10u"	D	Gold 10u"/Light Tin
5	Gold 15u"	E	Gold 15u"/Light Tin
6	Gold 30u"	F	Gold 30u"/Light Tin

正凌精密工业(广东)有限公司
2016/3/25
 内部资料请勿复印

REV.	DESCRIPTION	DATE
A2	DIMENSION MODIFY A2=4	3/18' 16
A1	UPDATE	10/24' 12
A	NEW RELEASED	9/28' 09

UNITS <input checked="" type="checkbox"/> mm <input type="checkbox"/> INCH		NAME: 2.54MM PIN HEADER DOUBLE ROW RIGHT ANGLE	NEXTRON ENGINEERING CORP.	
GENERAL TOLERANCES: (UNLESS SPECIFIED)		PART NO: Z-213**3**02**0	TITLE: CUSTOMER DWG	
mm INCH		APPD: 楊海文 2016/3/24	DWG NO: 010-0000-548	
4 PLACE ± ** ± **		CHKD: 廖小瓊 2016/3/24	C	
3 PLACE ± 0.08 ± **		DRAWN: 陳惠枝 2016/3/18	SCALE: SHEET: REV.:	
2 PLACE ± 0.25 ± **			1/1 3/3 A2	
1 PLACE ± 0.38 ± **				
ANGULAR: X°±2° .X°±**				