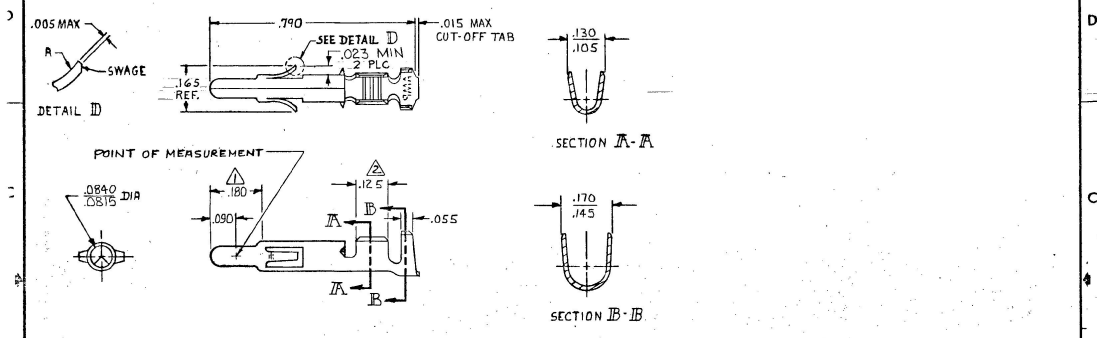


REVISIONS				LOC	DIST
#	DATE	DESCRIPTION	DATE	APPROVED	
1		REVISED PER ECR-12-011322	10AUG12	TM	



- △ PLATED WITH .000030 GOLD, OVER .000030 NICKEL UNDER PLATE
- △ PLATED INTERNALLY WITH .000030 GOLD.
- △ INSULATION RANGE: .060-.130 DIA

GOLD	△ .012 BRASS	350547-7
	.012 PH. BRZ	350547-8
PRE-TIN	.012 PH. BRZ	350547-3
GOLD	△ .012 BRASS	350547-2
PRE-TIN	.012 BRASS	350547-1
FINISH	MATERIAL	PART NO

UNLESS OTHERWISE SPECIFIED DIMENSIONS ARE IN INCHES. TOLERANCES ON DIMENSIONS: ± .015 INCHES	CONTRACT NO. DR. M. FEHER 5-6-81	STE TE Connectivity	
WIRE RANGE: 20-14 AWG	DATE: 12/10/12	NAME: PIN, (LOOSE PIECE)	
INSULATION RANGE: △	APPD: [Signature]	UNIVERSAL MATE-N-LOK	
	OTHER APPD:	SIZE: B	CODE IDENT NO: 00779
		DRAWING NO: 350547	SCALE: 4-1
		SHEET: #	

CUSTOMER DRAWING